

NEWS RELEASE
Feb. 25, 2019

For Immediate Release, Contact:
Brian Kroshus, (701) 471-7965
Julie Fedorchak, (701) 391-1140
Randy Christmann, (701) 328-4091

PSC Schedules Public Hearing in Bowbells for Proposed Burke Wind Energy Center and Associated Transmission Line

BISMARCK, ND – The North Dakota Public Service Commission (PSC) will hold a public hearing in Bowbells on Friday, March 8, regarding a proposal to construct a wind farm in Burke County and associated electric transmission line in Burke and Mountrail Counties.

Burke Wind, LLC (a wholly-owned, indirect subsidiary of NextEra Energy Resources, LLC), has submitted applications for permits for the Burke County Wind Energy Center and an associated transmission line. The wind farm will have a capacity of approximately 200 megawatts and will consist of up to 76 wind turbine generators and associated facilities. Associated facilities include access roads, underground electrical collection lines, one permanent meteorological evaluation tower, an operations and maintenance building and a project substation. The project area would encompass approximately 22,933 acres located approximately 15 miles southwest of Bowbells.

The project will also include a 37-mile long, 345-kilovolt (kV) transmission line that would run from the wind project in Burke County to Basin Electric's Tande Substation in Mountrail County. Total cost of the wind project and the transmission line is estimated at \$289 million.

(Note to the media: Maps showing the proposed location of the wind project and transmission line have been provided to you for use with any announcements/stories you print.)

Details for the public hearing are as follows:

- **When: Friday, March 8, 2019 – 9 a.m. Central**
- **Where: Memorial Hall
100 Main Street NW, Bowbells, ND 58721**

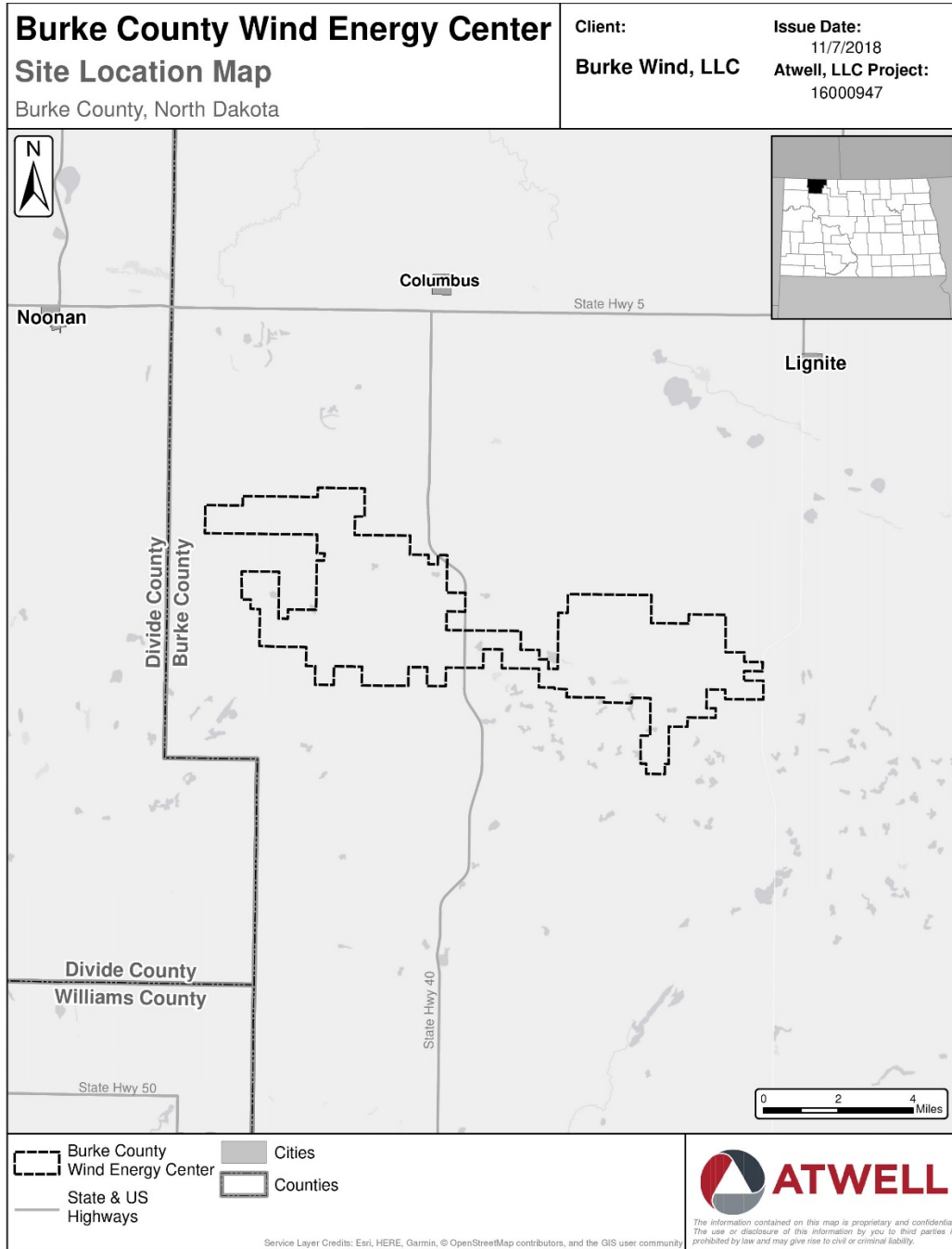
The hearing provides an opportunity for members of the public to contribute to the PSC's official record. Any comments from members of the public must be received at the hearing to be part of the record. People with concerns, questions or support/opposition for the project are encouraged to attend the hearing and present their information. Information received after the hearing will not be part of the official record and cannot be used as a basis for the Commission's decision unless certain additional procedures are followed.

The North Dakota Public Service Commission is a constitutionally created state agency with authority to permit, site and regulate certain business activities in the state including electric and gas utilities, telecommunications companies, power plants, electric transmission lines, pipelines, railroads, grain elevators, auctioneers, commercial weighing devices, pipeline safety and coal mine

reclamation. For more information, contact the Public Service Commission at (701) 328-2400 or www.psc.nd.gov.

###

Find us on Twitter: twitter.com/ndpsc or [@NDPSC](https://twitter.com/NDPSC)

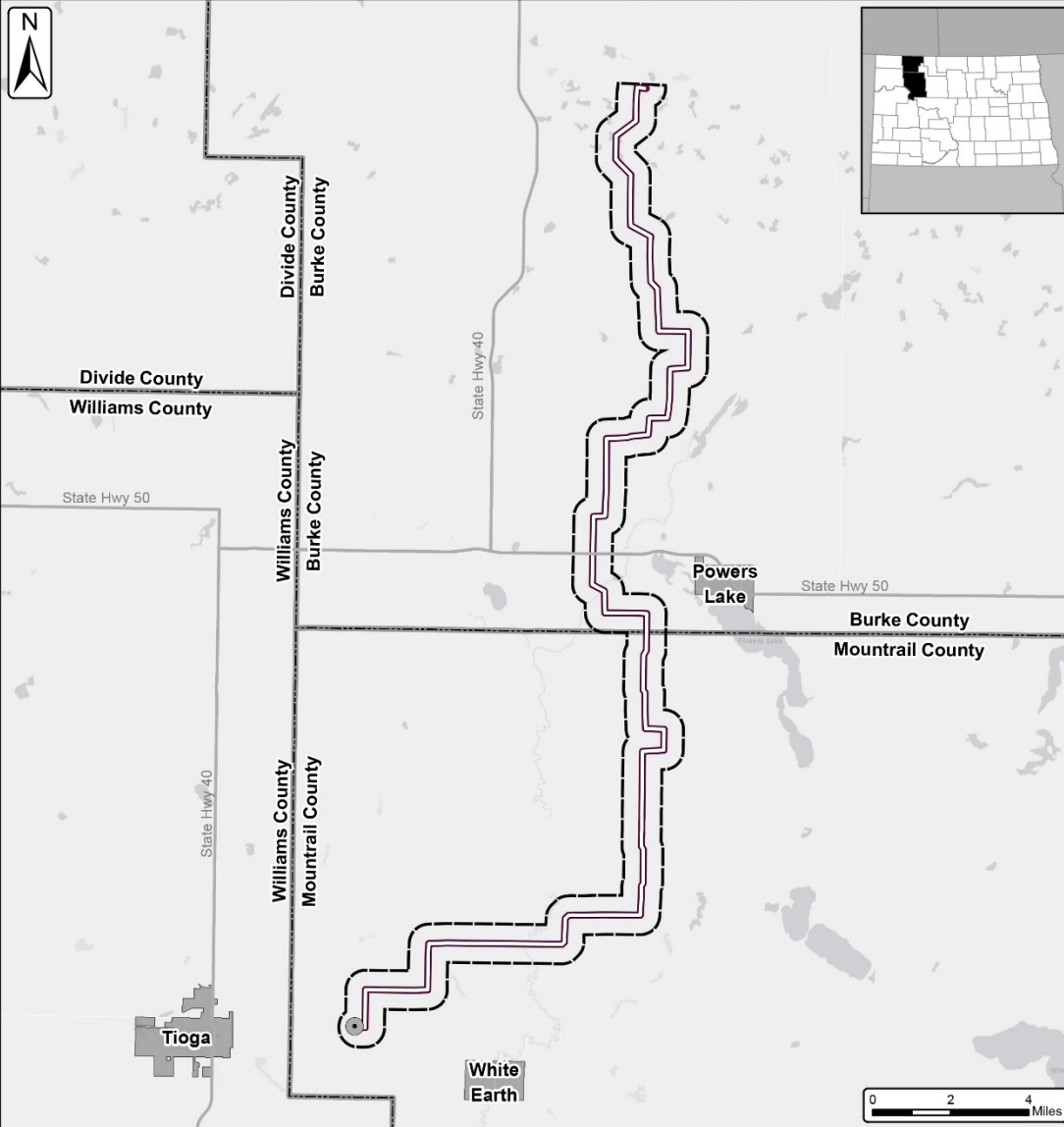









Burke Wind Transmission Line Site Location Map

Burke County & Mountrail County, North Dakota

Client:
Burke Wind, LLC

Issue Date:
7/13/2018
Atwell, LLC Project:
16000947



-  Transmission Line
-  Transmission Line 1 Mile Study Area
-  Cities
-  Transmission Line 150 ft. Project Corridor
-  Existing Tande Substation
-  Counties
-  State Highway



ATWELL

The information contained on this map is proprietary and confidential. The use or disclosure of this information by you to third parties is prohibited by law and may give rise to civil or criminal liability.

Service Layer Credits: Esri, HERE, Garmin, © OpenStreetMap contributors, and the GIS user community