



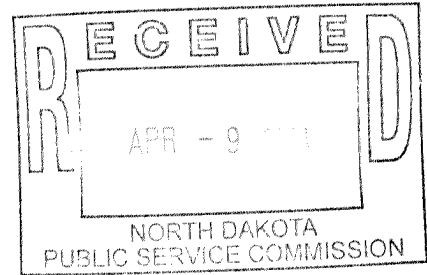
**MONTANA-DAKOTA**

UTILITIES CO.

A Division of MDU Resources Group, Inc.

400 North Fourth Street  
Bismarck, ND 58501  
(701) 222-7900

April 9, 2014



Carol K. Larson  
Matthew H. Olson  
Pringle & Herigstad, P.C.  
2525 Elk Drive  
PO Box 1000  
Minot, ND 58702

Re: Case No. PU-13-871  
Application for Permanent Authority to  
Menard Inc., near McKenzie, North  
Dakota

Montana-Dakota Utilities Co. herewith respectfully submits its responses to the  
Discovery Request of Capital Electric Cooperative, Inc. dated March 7, 2014.

Sincerely,

Tamie A. Aberle  
Director of Regulatory Affairs

cc: Dan Kuntz  
Certificate of Service

**MONTANA-DAKOTA UTILITIES CO.  
CAPITAL ELECTRIC COOPERATIVE, INC.  
DISCOVERY REQUEST  
DATED MARCH 7, 2014  
CASE NO. PU-13-871**

- 1. Describe the equipment, materials and other improvements that would be necessary for you to extend electric service to the proposed service location at issue in this proceeding.**

**Response:**

Montana-Dakota will install approximately 1,800 feet of 4/0 three phase underground primary from Montana-Dakota's existing overhead primary in an easterly direction to Menard's site. Once on Menard's site Montana-Dakota will install approximately 3,900 feet of 4/0 three phase underground primary to the various Menard's building locations.

**MONTANA-DAKOTA UTILITIES CO.  
CAPITAL ELECTRIC COOPERATIVE, INC.  
DISCOVERY REQUEST  
DATED MARCH 7, 2014  
CASE NO. PU-13-871**

- 2. Provide a detailed estimate of the costs of equipment, material, and labor required for you to extend service to the proposed electric location at issue in this proceeding.**

**Response:**

Please see Attachment A for the cost estimate of providing the electric service described in Responses No. 1.

## COST ESTIMATE Part C

Project: **Costs to Extend Electric Service to Menards INC Industrial Facility Site**

<i>CONSTRUCTION</i>		<u>Item</u>	<u>Cost each</u>	<u>Feet or Quantity</u>	<u>Amount</u>
1)	Material	Stores Material			\$13,936
					<b>Material Total=</b>
					<b>\$13,936</b>
2)	Direct Labor		<u>Units</u>	<u>Quantity</u>	<u>Rate/Hour</u>
		Line Crew	Hours	80	\$38.00
		Engineering	Hours	12	\$48.00
		Engineering Asst.	Hours	0	\$38.00
		Construction Supv.	Hours	0	\$31.00
		Drafting	Hours	0	\$15.00
			Hours	0	\$0
					<b>Total Labor=</b>
					<b>\$3,616</b>
2a)	Labor Loading				<b>Payroll Loading</b>
					<b>\$1,700</b>
					<b>Total Labor w&gt;Loading</b>
					<b>\$5,316</b>
3)	Contract Charge		<u>Quantity</u>	<u>Cost Each</u>	
		Trenching	1600	\$3.00	\$4,800
		Boring	200	\$14.00	\$2,800
					<b>TOTAL =</b>
					<b>\$7,600</b>
4)	Transportation & Equipment		<u>Units</u>	<u>Quantity</u>	<u>\$Rate/Unit</u>
		Line Truck	Hours	20	35.00
		Crew Pickup	Miles	125	1.65
		Engineering Car	Miles	40	0.50
		R/W CAR	Miles	0	0.60
		SPV. PICK.	Miles	0	0.70
		Man Lift Truck	Hours	20	23.00
					<b>TOTAL =</b>
					<b>\$1,386</b>
					<b>SUB TOTAL =</b>
					<b>\$28,237</b>
		15.52		<b>% OVERHEAD =</b>	<b>\$4,382</b>
					<b>CONSTRUCTION TOTAL =</b>
					<b>\$32,619</b>
<i>RETIREMENT</i>					
1)	Salvage				\$0
2)	Cost of Removal		<u>Man-hours</u>	<u>Rate/Hr(\$)</u>	
		CREW MAN-HRS =	0	28.50	\$0
		LINE TRK HRS =	0	32.00	\$0
		CREW PU. MIS =	0	1.65	\$0
		HRS =	0	10.00	\$0
					<b>TOTAL =</b>
					<b>\$0</b>
					<b>RETIRE TOTAL =</b>
					<b>\$0</b>
					<b>PROJECT TOTAL =</b>
					<b>\$32,619</b>

## COST ESTIMATE Part D

Project: Costs of new Electric Service inside Menards INC Industrial Facility Site

<i>CONSTRUCTION</i>	<u>Item</u>	<u>Cost each</u>	<u>Feet or Quantity</u>	<u>Amount</u>
1)	Material	Stores Material		\$30,894
			Material Total=	\$30,894
2)	Direct Labor		Unloaded	
		<u>Units</u>	<u>Quantity</u>	<u>Rate/Hour</u>
	Line Crew	Hours	176	\$6,688
	Engineering	Hours	28	\$1,344
	Engineering Asst.	Hours	0	\$0
	Construction Supv.	Hours	0	\$0
	Drafting	Hours	0	\$0
		Hours	0	\$0
			Total Labor=	\$8,032
2a)	Labor Loading		Payroll Loading	\$3,775
			Total Labor w>Loading	\$11,807
3)	Contract Charge		<u>Quantity</u>	<u>Cost Each</u>
	Trenching		3800	\$3.00
				\$11,400
			TOTAL =	\$11,400
4)	Transportation & Equipment	<u>Units</u>	<u>Quantity</u>	<u>\$Rate/Unit</u>
	Line Truck	Hours	44	\$1,540
	Crew Pickup	Miles	275	\$454
	Engineering Car	Miles	120	\$60
	R/W CAR	Miles	0	\$0
	SPV. PICK.	Miles	0	\$0
	Man Lift Truck	Hours	44	\$1,012
			TOTAL =	\$3,066
		SUB	TOTAL =	\$57,167
	15.52	% OVERHEAD =		\$8,872
		CONSTRUCTION TOTAL =		\$66,039
 <i>RETIREMENT</i>				
1)	Salvage			\$0
2)	Cost of Removal	<u>Man-hours</u>	<u>Rate/Hr(\$)</u>	
	CREW MAN-HRS =	0	28.50	\$0
	LINE TRK HRS =	0	32.00	\$0
	CREW PU. MIS =	0	1.65	\$0
	HRS =	0	10.00	\$0
			TOTAL =	\$0
	RETIRE		TOTAL =	\$0
	<b>PROJECT</b>		<b>TOTAL =</b>	<b>\$66,039</b>

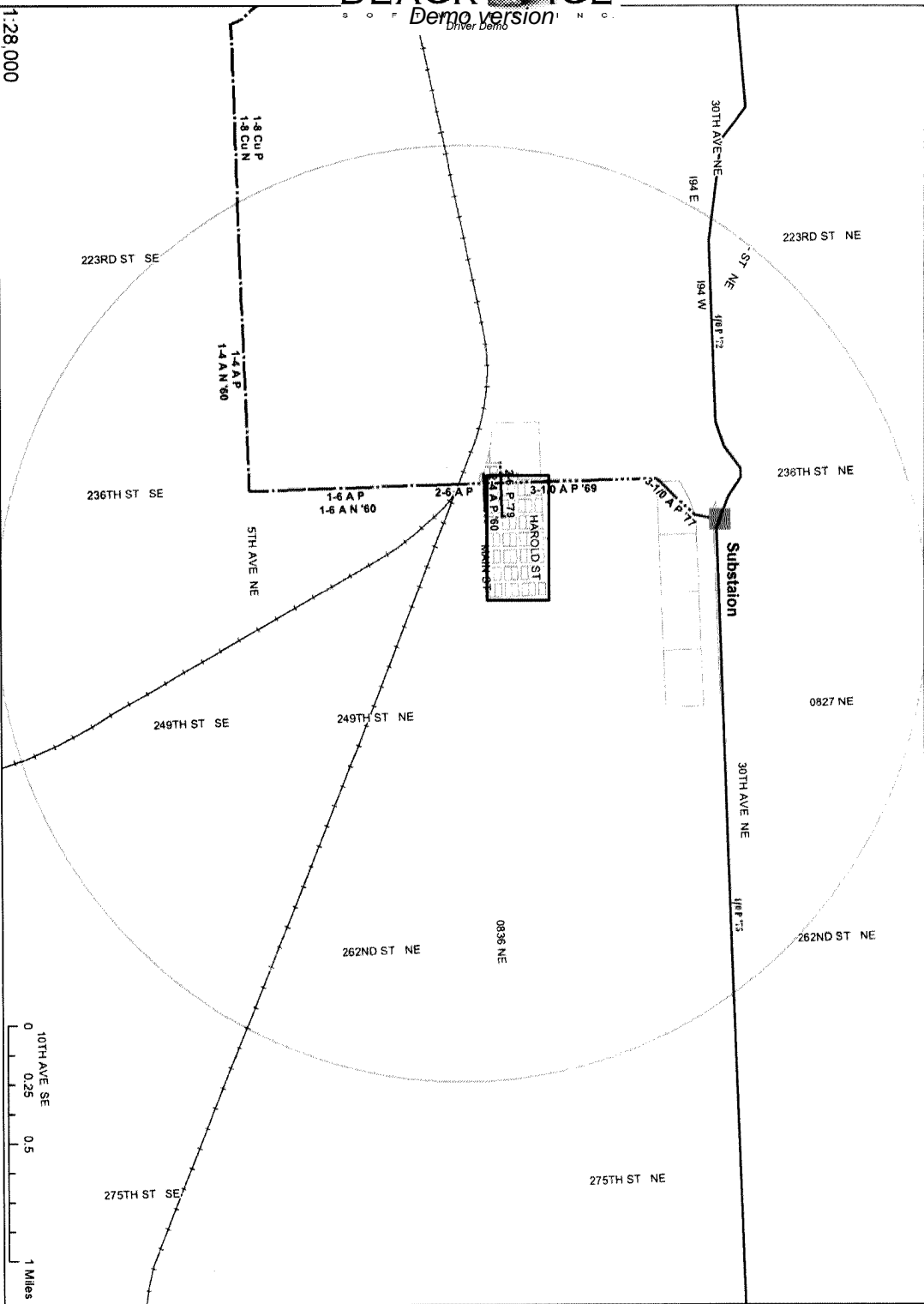
**MONTANA-DAKOTA UTILITIES CO.  
CAPITAL ELECTRIC COOPERATIVE, INC.  
DISCOVERY REQUEST  
DATED MARCH 7, 2014  
CASE NO. PU-13-871**

- 3. Describe your electric supply lines located within a two-mile radius of the proposed service point at issue in this proceeding and the dates the lines were placed into service.**

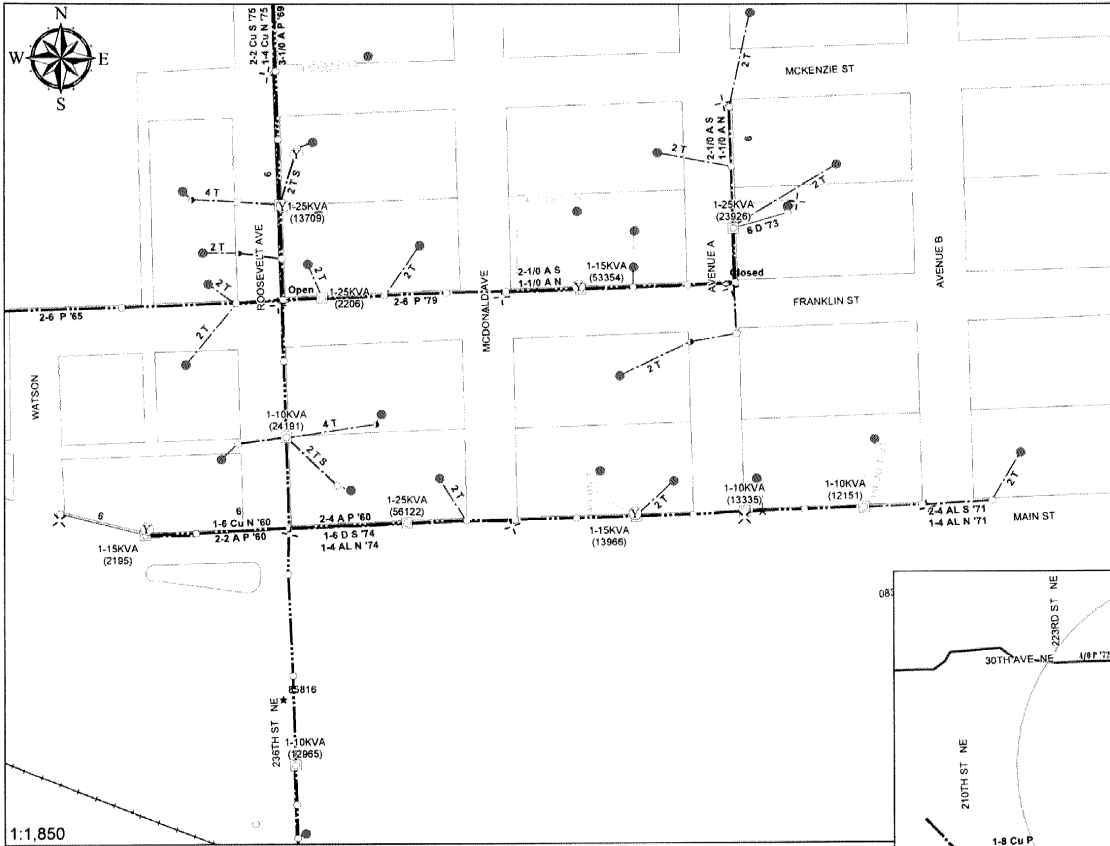
**Response:**

Montana-Dakota has electric transmission and distribution facilities within the two mile radius. Please see the maps "McKenzie 2 Mile Radius Electric Assets" and "McKenzie Electric Service Points" provided in Attachment A for more detail.

# McKenzie 2 Mile Radius Electric Assets



<b>Assets</b>	McKenzie Limits
	2 Mile Radius
	Substation
<b>Overhead Transmission</b>	46 KV
<b>Primary Overhead Electric Line</b>	Single Phase Primary Overhead
	Two Phase Primary Overhead
	Three Phase Primary Overhead



**Electrical Assets**

**Electric Service Point**

- Single Meter Service Point

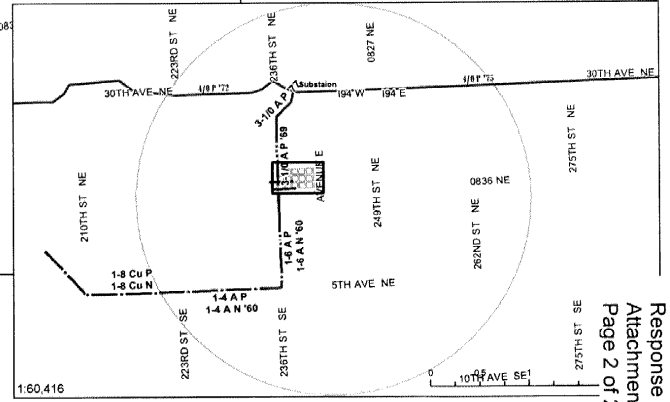
29 Customers served within 2 mile radius

**Primary Overhead Electric Line**

- Single Phase Primary Overhead
- - - Two Phase Primary Overhead
- · - · - Three Phase Primary Overhead

**Secondary Overhead Electric Line**

- Single Phase Secondary Overhead
- - - Single Phase Service Overhead
- Overhead Streetlight Line
- OH Yard/Flood Light Line



**McKenzie Electrical Services**

**MONTANA-DAKOTA UTILITIES CO.  
CAPITAL ELECTRIC COOPERATIVE, INC.  
DISCOVERY REQUEST  
DATED MARCH 7, 2014  
CASE NO. PU-13-871**

- 4. State your estimate of electric service consumption at the proposed service point at issue in this proceeding.**

**Response:**

Please see the Attachment A for Additional Revenue Calculation for the estimate of electric service consumption at the proposed service point at issue in this proceeding.

## Additional Revenue Calculation

Customer: Menards INC, Industrial Facility, Mckenzie ND

Bldg	Demand -kW	Monthly KWH
908 -Xdock	136	29376
914 - Treat	175	37800
917 - Truss	102	22032
919 - Steel	278	60048
925 - Concrete	393	84888
<b>Totals</b>	<b>1084</b>	<b>234144</b>

Load Factor = 0.3

### If Served at Primary Rate:

Basic Service Charge =	\$95.00
Summer Demand Charge \$/kW=	\$9.250
Winter Demand Charge \$/kW=	\$6.250
Energy Charge \$/kwh =	\$0.05194

Summer Montly Revenue =	\$22,283.44
Winter Monthly Revenue =	\$19,031.44

**Annual Revenue = \$241,385.27**

### If Served at Secondary Rate:

Basic Service Charge =	\$45.00
Summer Demand Charge \$/kW=	\$11.250
Winter Demand Charge \$/kW=	\$8.250
Energy Charge \$/kwh =	\$0.05389

Summer Montly Revenue =	\$25,038.02
Winter Monthly Revenue =	\$21,786.02

**Annual Revenue = \$274,440.24**

Rates Effective 1/15/2014

**MONTANA-DAKOTA UTILITIES CO.  
CAPITAL ELECTRIC COOPERATIVE, INC.  
DISCOVERY REQUEST  
DATED MARCH 7, 2014  
CASE NO. PU-13-871**

**5. What is the existing capacity at the substation that will serve the proposed service location?**

**Response:**

There are two 100kVA transformers at the existing substation for a total capacity of 200kVA.

**MONTANA-DAKOTA UTILITIES CO.  
CAPITAL ELECTRIC COOPERATIVE, INC.  
DISCOVERY REQUEST  
DATED MARCH 7, 2014  
CASE NO. PU-13-871**

- 6. Does Montana-Dakota have sufficient capacity at the existing substation to serve the anticipated load to the proposed service location? If not, please describe in detailed fashion the upgrade needed to the substation and provide a detailed calculation of costs of equipment, material, and labor required to upgrade the substation to meet the service location demand.**

**Response:**

The existing substation does not have the capacity to serve the anticipated added Menard's load. The substation transformers will be replaced and voltage regulators and a recloser will be added along with additional wiring. Please see Attachment A for the cost estimate of the substation upgrade detailed costs.

## COST ESTIMATE Part A

Project: MDU McKenzie Sub Changes required to Serve Menards INC, Industrial Facility.

<i>CONSTRUCTION</i>		<u>Item</u>	<u>Cost each</u>	<u>Feet or Quantity</u>	<u>Amount</u>
1)	Material	Stores Material			\$9,172
					<b>Material Total=</b>
					<b>\$9,172</b>
2)	Direct Labor			Unloaded	
		<u>Units</u>	<u>Quantity</u>	<u>Rate/Hour</u>	
	Line Crew	Hours	416	\$38.00	\$15,808
	Engineering	Hours	80	\$48.00	\$3,840
	Engineering Asst.	Hours	0	\$38.00	\$0
	Construction Supv.	Hours	0	\$31.00	\$0
	Drafting	Hours	0	\$15.00	\$0
		Hours	0		\$0
					<b>Total Labor=</b>
					<b>\$19,648</b>
2a)	Labor Loading			Payroll Loading	\$9,235
					<b>Total Labor w&gt;Loading</b>
					<b>\$28,883</b>
3)	Contract Charge		<u>Quantity</u>	<u>Cost Each</u>	
	Install Transformer Pad		1	\$5,000.00	\$5,000
	Install Recloser Pad		1	\$1,500.00	\$1,500
	Crane		1	\$800.00	\$800
	Low Boy Trailer		1	\$750.00	\$750
					\$0
					<b>TOTAL =</b>
					<b>\$8,050</b>
4)	Transportation & Equipment	<u>Units</u>	<u>Quantity</u>	<u>\$Rate/Unit</u>	
	Line Truck	Hours	104	35.00	\$3,640
	Crew Pickup	Miles	520	1.65	\$858
	Engineering Car	Miles	400	0.50	\$200
	R/W CAR	Miles	0	0.60	\$0
	SPV. PICK.	Miles	0	0.70	\$0
	Man Lift Truck	Hours	104	23.00	\$2,392
					<b>TOTAL =</b>
					<b>\$7,090</b>
					<b>SUB TOTAL =</b>
					<b>\$53,195</b>
					<b>15.52 % OVERHEAD =</b>
					<b>\$8,256</b>
					<b>CONSTRUCTION TOTAL =</b>
					<b>\$61,451</b>
<i>RETIREMENT</i>					
1)	Salvage				\$0
2)	Cost of Removal		<u>Man-hours</u>	<u>Rate/Hr(\$)</u>	
	CREW MAN-HRS =		0	28.50	\$0
	LINE TRK HRS =		0	32.00	\$0
	CREW PU. MIS =		0	1.65	\$0
	HRS =		0	10.00	\$0
					<b>TOTAL =</b>
					<b>\$0</b>
					<b>RETIRE TOTAL =</b>
					<b>\$0</b>
					<b>PROJECT TOTAL =</b>
					<b>\$61,451</b>

**MONTANA-DAKOTA UTILITIES CO.  
CAPITAL ELECTRIC COOPERATIVE, INC.  
DISCOVERY REQUEST  
DATED MARCH 7, 2014  
CASE NO. PU-13-871**

- 7. Is Montana-Dakota's existing three phase line from the substation to the service location sufficient to carry the proposed service location load? If not, please describe in detailed fashion the upgrade needed to the three phase line and provide a detailed calculation of costs of equipment, material, and labor required to upgrade the three phase line to meet the service location demand.**

**Response:**

The existing line has an adequate size conductor to carry the proposed service location load. However, the system will have to be converted from an electrically connected Delta system to a Wye system. This will be accomplished by the addition of a 1/0 ACSR system neutral conductor from the substation to the end of the existing system. Please see Attachment A for the cost estimate to convert the system from Delta to Wye.

## COST ESTIMATE Part B

Project: Mckenzie - Add Neutral to existing overhead line, Convert Town from 2.4 kV to 12kV, and convert 1200 feet of single phase overhead to three phase.

<i>CONSTRUCTION</i>		<u>Item</u>	<u>Cost each</u>	<u>Feet or Quantity</u>	<u>Amount</u>
1)	Material	Stores Material			\$5,798
					Material Total=
					<u>\$5,798</u>
2)	Direct Labor			Unloaded	
			<u>Units</u>	<u>Quantity</u>	<u>Rate/Hour</u>
		Line Crew	Hours	288	\$38.00
		Engineering	Hours	40	\$48.00
		Engineering Asst.	Hours	0	\$38.00
		Construction Supv.	Hours	0	\$31.00
		Drafting	Hours	0	\$15.00
			Hours	0	\$0
					Total Labor=
					\$12,864
2a)	Labor Loading			Payroll Loading	\$6,046
					Total Labor w/Loading
					<u>\$18,910</u>
3)	Contract Charge		<u>Quantity</u>	<u>Cost Each</u>	
		Trenching	0	\$3.00	\$0
		Boring	0	\$14.00	\$0
			1		\$0
			1		\$0
					TOTAL =
					<u>\$0</u>
4)	Transportation & Equipment		<u>Units</u>	<u>Quantity</u>	<u>\$Rate/Unit</u>
		Line Truck	Hours	48	35.00
		Crew Pickup	Miles	300	1.65
		Engineering Car	Miles	400	0.50
		R/W CAR	Miles	0	0.60
		SPV. PICK.	Miles	0	0.70
		Man Lift Truck	Hours	48	23.00
					TOTAL =
					<u>\$3,479</u>
					SUB TOTAL =
					\$28,187
15.52				% OVERHEAD =	\$4,375
					CONSTRUCTION TOTAL =
					<u>\$32,562</u>
<i>RETIREMENT</i>					
1)	Salvage				\$0
2)	Cost of Removal		<u>Man-hours</u>	<u>Rate/Hr(\$)</u>	
		CREW MAN-HRS =	0	28.50	\$0
		LINE TRK HRS =	0	32.00	\$0
		CREW PU. MIS =	0	1.65	\$0
		HRS =	0	10.00	\$0
					TOTAL =
					<u>\$0</u>
					RETIRE TOTAL =
					<u>\$0</u>
					PROJECT TOTAL =
					<u>\$32,562</u>

**MONTANA-DAKOTA UTILITIES CO.  
CAPITAL ELECTRIC COOPERATIVE, INC.  
DISCOVERY REQUEST  
DATED MARCH 7, 2014  
CASE NO. PU-13-871**

- 8. Does Montana-Dakota have an alternate substation which could serve the proposed service location? If yes, please provide the location of the two sources of power that will provide redundant service to the proposed service location.**

**Response:**

There is not an alternate substation.

**MONTANA-DAKOTA UTILITIES CO.  
CAPITAL ELECTRIC COOPERATIVE, INC.  
DISCOVERY REQUEST  
DATED MARCH 7, 2014  
CASE NO. PU-13-871**

- 9. Provide a schedule of your current rate schedule that would be applicable to your provision of electric service at the proposed service location at issue in this proceeding including all customer, energy and demand charges.**

**Response:**

Please see Attachment A.



## Montana-Dakota Utilities Co.

A Division of MDU Resources Group, Inc.  
400 N 4<sup>th</sup> Street  
Bismarck, ND 58501

### State of North Dakota Electric Rate Schedule

NDPSC Volume 4  
2<sup>nd</sup> Revised Sheet No. 18  
Canceling 1<sup>st</sup> Revised Sheet No. 18

#### GENERAL ELECTRIC SERVICE Rate 30

Page 1 of 2

#### Availability:

In all communities served for all types of demand metered general electric service except outside lighting, standby, resale or other customers covered by special contracts or rate schedules applicable to specific services. The customer's wiring must be arranged so that all service can be measured through one meter. If the customer does not connect his wiring into a single system, each meter shall constitute a separate billing unit.

#### Rate:

##### Primary Service:

Basic Service Charge:	\$95.00 per month
Demand Charge:	
October – May	\$6.25 per Kw
June – September	\$9.25 per Kw
Energy Charge:	2.296¢ per Kwh
Base Fuel and Purchased Power:	2.024¢ per Kwh

##### Secondary Service:

Basic Service Charge:	\$45.00 per month
Demand Charge:	
October – May	\$ 8.25 per Kw
June – September	\$11.25 per Kw
Energy Charge:	2.376¢ per Kwh
Base Fuel and Purchased Power:	2.087¢ per Kwh

#### Minimum Bill:

Basic Service Charge.

#### Payment:

Bills will be considered past due if not paid by the due date shown on the bill. Past due bills are subject to a late payment charge in accordance with the provisions of Rate 100 or any amendments or alterations thereto.

---

<b>Date Filed:</b> June 14, 2011	<b>Effective Date:</b> Service rendered on and after July 22, 2011
<b>Issued By:</b> Tamie A. Aberle Regulatory Affairs Manager	<b>Case No.:</b> PU-10-124



## Montana-Dakota Utilities Co.

A Division of MDU Resources Group, Inc.

400 N 4<sup>th</sup> Street  
Bismarck, ND 58501

### State of North Dakota Electric Rate Schedule

---

NDPSC Volume 4  
3<sup>rd</sup> Revised Sheet No. 18.1  
Canceling 2<sup>nd</sup> Revised Sheet No. 18.1

#### GENERAL ELECTRIC SERVICE Rate 30

---

Page 2 of 2

#### Determination of Billing Demand:

The demand in kilowatts for billing purposes shall be the maximum 15 minute measured demand in the current month. Demands will be determined to the nearest one-tenth kilowatt. Customers whose loads have rapidly fluctuating and/or intermittent demand characteristics shall be subject to special rules and regulations.

#### Power Factor Clause:

The Company reserves the right to require the customer to install adequate equipment so that at all times it can operate its facilities to maintain a power factor between 90% lagging and 90% leading. If the customer operates outside this range, the maximum 15 minute integrated reactive kilovolt amperes in excess of 50% of the maximum 15 minute integrated kilowatt demand for the same month will be billed at \$3.35 per Kvar of such excess demand.

#### Adjustment Clauses:

Bills are subject to the following adjustments or any amendments or alterations thereto:

1. Environmental Cost Recovery Rider Rate 57
2. Fuel and Purchased Power Adjustment Rate 58
3. Transmission Cost Adjustment Rate 59

#### General Terms and Conditions:

1. Customers or their architects, contractors and electricians should consult with the Company before proceeding to design or erect installations in which there will be a substantial electric load, to make sure their equipment will meet requirements and receive adequate service.
2. Primary service rate is applicable to customers that own their own transformers, related equipment and distribution facilities downstream of the meter, satisfactory to the Company so customer can receive service and be metered at primary voltages of 2,400 volts or greater.
3. The foregoing schedule is subject to Rates 100-112 and any amendments or alterations thereto or additional rules and regulations promulgated by the Company under the laws of the state.

---

<b>Date Filed:</b>	February 11, 2013	<b>Effective Date:</b>	Service rendered on and after January 15, 2014
<b>Issued By:</b>	Tamie A. Aberle Director - Regulatory Affairs	<b>Case No.:</b>	PU-13-83 & PU-13-85



**Montana-Dakota Utilities Co.**

A Division of MDU Resources Group, Inc.

400 N 4<sup>th</sup> Street  
Bismarck, ND 58501

**State of North Dakota  
Electric Rate Schedule**

---

NDPSC Volume 4  
2<sup>nd</sup> Revised Sheet No. 41.1  
Canceling 1<sup>st</sup> Revised Sheet No. 41.1

**Environmental Cost Recovery Rider Rate 57**

---

Page 2 of 2

**4. Environmental Cost Recovery Rider:**

Residential and Small General	0.203¢ per Kwh
Large General	0.164¢ per Kwh
Lighting	0.120¢ per Kwh

---

**Date Filed:** May 31, 2013

**Effective Date:** Service rendered on and  
after January 15, 2014

**Issued By:** Tamie A. Aberle  
Director - Regulatory Affairs

**Case No.:** PU-13-83 & PU-13-85



**Montana-Dakota Utilities Co.**  
 A Division of MDU Resources Group, Inc.  
 400 N 4<sup>th</sup> Street  
 Bismarck, ND 58501

**State of North Dakota  
 Electric Rate Schedule**

NDPSC Volume 4  
 20<sup>th</sup> Revised Sheet No. 42.2  
 Canceling 19<sup>th</sup> Revised Sheet No. 42.2

**FUEL AND PURCHASED POWER ADJUSTMENT Rate 58**

Page 3 of 3

2. Refunds from supplier(s) and market operators with respect to fuel and purchased power costs.
3. Carrying charges or credits at a rate equal to the three-month Treasury Bill rate as published monthly by the Federal Reserve Board.
4. The balance in the Deferred Fuel Cost Account shall be decreased each month by the amount of the Surcharge Adjustment multiplied by the Kwh sales for the month. The amount amortized shall be applied pro rata between the Deferred Fuel Cost Account and the interest balance.

**5. Manner of Filing:**

The Company shall file a monthly statement showing the calculation of the Fuel and Purchased Power Adjustment with the Commission prior to implementing the monthly adjustment. The adjustment in rates shall be effective with service rendered on and after the first day of each month, unless the Commission shall otherwise order.

**6. Fuel and Purchased Power Adjustment:**

	<u>Primary</u>	<u>Secondary</u>
Base Fuel	2.024¢	2.087¢
Fuel and Purchased Power Adjustment	0.563	0.615
Total FPPA	2.587¢	2.702¢

**Date Filed:** December 13, 2013

**Effective Date:** Service rendered on and after January 1, 2014

**Issued By:** Tamie A. Aberle  
 Director- Regulatory Affairs

**Case No.:** PU-14-011



**Montana-Dakota Utilities Co.**

A Division of MDU Resources Group, Inc.  
400 N 4<sup>th</sup> Street  
Bismarck, ND 58501

**State of North Dakota  
Electric Rate Schedule**

---

NDPSC Volume 4  
2<sup>nd</sup> Revised Sheet No. 43.1  
1<sup>st</sup> Revised Sheet No. 43.1

**TRANSMISSION COST ADJUSTMENT Rate 59**

---

Page 2 of 2

d. The true-up will reflect any over or under collection of revenue under the Transmission Adjustment from the preceding twelve month period plus carrying charges or credits accrued at a rate equal to the three-month Treasury Bill rate as published monthly by the Federal Reserve Board.

**3. Time and Manner of Filing:**

Montana-Dakota shall file the Transmission Adjustment at least 30 days prior to the proposed effective date. The filing by Montana-Dakota shall be made by means of a revised Transmission Adjustment tariff sheet identifying the amounts of the adjustment, the derivation of the adjustment and the resulting Transmission Adjustment rate.

**4. Transmission Cost Adjustment Rate by class:**

Residential & Small General	0.192¢
Large General	0.147¢
Lighting	0.112¢

---

**Date Filed:** October 18, 2013

**Effective Date:** Service rendered on and after January 1, 2014

**Issued By:** Tamie A. Aberle  
Director - Regulatory Affairs

**Case No.:** PU-13-839

**MONTANA-DAKOTA UTILITIES CO.  
CAPITAL ELECTRIC COOPERATIVE, INC.  
DISCOVERY REQUEST  
DATED MARCH 7, 2014  
CASE NO. PU-13-871**

- 10. Provide a detailed calculation of your estimate of the annual revenue you would expect to receive from consumption of electric service at the proposed service location at issue in this proceeding including all customer, energy and demand charges.**

**Response:**

Please see Response No. 4 Attachment A.

**MONTANA-DAKOTA UTILITIES CO.  
CAPITAL ELECTRIC COOPERATIVE, INC.  
DISCOVERY REQUEST  
DATED MARCH 7, 2014  
CASE NO. PU-13-871**

- 11. State the number of customer you currently service with electric service within a two-mile radius of the proposed service point at issue in this proceeding.**

**Response:**

Montana-Dakota provides electric service to 29 customers within a two mile radius of the proposed service point at issue. Please see Response No. 3 Attachment A, Page 2 for a map of the McKenzie electric service points.

**MONTANA-DAKOTA UTILITIES CO.  
CAPITAL ELECTRIC COOPERATIVE, INC.  
DISCOVERY REQUEST  
DATED MARCH 7, 2014  
CASE NO. PU-13-871**

- 12. Provide copies of all written or electronic communications between you and Menard, Inc., regarding electric service to the proposed service point at issue in this proceeding and any proposals made by you to provide service to the service point.**

**Response:**

Please see Attachment A.

---

**From:** Oswald, Larry  
**Sent:** Thursday, August 22, 2013 1:38 PM  
**To:** Jesse Cain; Veil, Jayden  
**Cc:** Lohstreter, Craig; Darras, Patrick  
**Subject:** RE: Electric and Natural Gas to Menards Distribution Center McKenzie

Jesse

I think we would prefer it on your letter head but you can email signed PDF versus mailing the original. Address would be 909 Airport Road Bismarck, ND 58504. Attn: Jayden Veil

Larry Oswald, CEM BEP  
Manager, Business Development, Energy  
Programs, & Marketing  
Montana-Dakota Utilities Co.  
Great Plains Natural Gas Co.  
701-222-7939

---

**From:** Jesse Cain [mailto:jcain@menard-inc.com]  
**Sent:** Thursday, August 22, 2013 8:20 AM  
**To:** Veil, Jayden  
**Cc:** Lohstreter, Craig; Darras, Patrick; Oswald, Larry  
**Subject:** RE: Electric and Natural Gas to Menards Distribution Center McKenzie

Would an email suffice, or should it be a letter? Can I please get the mailing address. Thanks

**Jesse Cain**

Construction Project Manager  
Store Planning/ Design/ Construction Dept.  
Menard, Inc.  
Ph: (715) 876-2124  
Cell: (715) 577-0701  
Fx: (715) 876-2423  
Email: [jcain@menard-inc.com](mailto:jcain@menard-inc.com)

---

**From:** Veil, Jayden [mailto:Jayden.Veil@MDU.com]  
**Sent:** Wednesday, August 21, 2013 4:31 PM  
**To:** Jesse Cain  
**Cc:** Lohstreter, Craig; Darras, Patrick; Oswald, Larry  
**Subject:** FW: Electric and Natural Gas to Menards Distribution Center McKenzie

Mr. Jesse Cain - Menards

Hi Jesse:

As per our discussion we are preparing plans to get service out to your proposed site. I informed you that that can provide you with both natural gas and 3 phase electric service. We currently have 3 phase power to that section and are closer than Capital Electric Cooperative. In order to start the ball rolling on MDU providing electric service, we need to you to do a request for service. That request can be as simple as a letter stating that we (Menards) is developing the

land on the NW ¼ of Section 33, Twp 139N Rng 77W and are requesting that MDU provide (3 phase) electric service to our site.

You mentioned that you will likely have six building metered separately with the minimum entrance being 800 Amps and the Maximum entrance being 3000 Amps. As this project moves along we will need some details as to building locations and connected load. Ex: KW per meter site.

If you have any questions please do not hesitate contacting myself or Larry Oswald. I look forward to hearing from you.

**Jayden Veil**  
**Energy Management Specialist**  
**O: (701) 221-4308**  
**C: (701) 220-6942**  
**F: (701) 221-4329**

---

**From:** Oswald, Larry  
**Sent:** Saturday, February 15, 2014 7:53 AM  
**To:** Steve Manor  
**Subject:** RE: Electric Service Route

I know I have seen one but do not have it. I will request not sure if I can get it before Monday but will try. Basically the two options I recall seeing came from north of I-94 (see electric map and north of the Substation) extending south either following the existing electric line or a mile east along 249<sup>th</sup> street.

Larry Oswald, CEM BEP  
Manager, Business Development, Energy  
Programs, & Marketing  
Montana-Dakota Utilities Co.  
Great Plains Natural Gas Co.  
701-222-7939

---

**From:** Steve Manor [<mailto:smanor@menard-inc.com>]  
**Sent:** Saturday, February 15, 2014 7:42 AM  
**To:** Oswald, Larry  
**Subject:** FW: Electric Service Route

Larry,  
Was there a map like this that was done for what would be required to run Gas to the site?

Thanks,  
Steve Manor  
DC Maintenance General Manager  
Phone (715) 876-4023  
Cell (715) 579-0375

---

**From:** Oswald, Larry [<mailto:Larry.Oswald@MDU.com>]  
**Sent:** Friday, February 14, 2014 2:06 PM  
**To:** Steve Manor  
**Subject:** FW: Electric Service Route

Larry Oswald, CEM BEP  
Manager, Business Development, Energy  
Programs, & Marketing  
Montana-Dakota Utilities Co.  
Great Plains Natural Gas Co.  
701-222-7939

---

**From:** Veil, Jayden  
**Sent:** Friday, November 15, 2013 2:43 PM

**To:** Oswald, Larry  
**Subject:** FW: Electric Service Route

---

**From:** Veil, Jayden  
**Sent:** Friday, November 15, 2013 2:42 PM  
**To:** 'Jesse Cain'  
**Subject:** Electric Service Route

**Jayden Veil**  
**Energy Management Specialist**  
**O: (701) 221-4308**  
**C: (701) 220-6942**  
**F: (701) 221-4329**



---

**From:** Steve Manor <[smanor@menard-inc.com](mailto:smanor@menard-inc.com)>  
**Sent:** Thursday, February 20, 2014 11:22 AM  
**To:** Oswald, Larry  
**Subject:** RE: Menards Electric Worksheet.xls

Larry,  
I have not been given anything as final but from the rates and program comparison we put together I don't see any reason Menards wouldn't go with MDU for both gas and electric.

Thanks,  
Steve Manor  
DC Maintenance General Manager  
Phone (715) 876-4023  
Cell (715) 579-0375

---

**From:** Oswald, Larry [<mailto:Larry.Oswald@MDU.com>]  
**Sent:** Thursday, February 20, 2014 10:46 AM  
**To:** Steve Manor  
**Subject:** RE: Menards Electric Worksheet.xls

Thank Steve. Based on your internal discussions am I correct to assume that at this time Menards still requests to be served Electric Service by Montana-Dakota Utilities Co and therefore we should continue with the PC&N process with the North Dakota Public Service Commission?

sent from my iPad

-----Original Message-----

**From:** Steve Manor [[smanor@menard-inc.com](mailto:smanor@menard-inc.com)]  
**Sent:** Thursday, February 20, 2014 08:36 AM Central Standard Time  
**To:** Oswald, Larry  
**Subject:** RE: Menards Electric Worksheet.xls

Larry,  
Meeting went very well, thanks again on all your help gathering the information needed.  
I'm sure there will be further contact with you as the Bismarck Site progresses.  
No additional questions at this time.

Thanks,  
Steve Manor  
DC Maintenance General Manager  
Phone (715) 876-4023  
Cell (715) 579-0375

---

**From:** Oswald, Larry [<mailto:Larry.Oswald@MDU.com>]  
**Sent:** Wednesday, February 19, 2014 9:57 AM

**To:** Steve Manor  
**Subject:** RE: Menards Electric Worksheet.xls

Steve

I just wanted to touch base to see how your meeting went on Monday and if you have any follow-up questions or concerns.

Thanks  
Larry

Larry Oswald, CEM BEP  
Manager, Business Development, Energy  
Programs, & Marketing  
Montana-Dakota Utilities Co.  
Great Plains Natural Gas Co.  
701-222-7939

---

**From:** Oswald, Larry  
**Sent:** Saturday, February 15, 2014 10:05 AM  
**To:** [smanor@menard-inc.com](mailto:smanor@menard-inc.com)  
**Subject:** Menards Electric Worksheet.xls

Steve

You can change the yellow highlighted cells for total demand and load factor and the rest of the sheet will calculate for our rates. I am sure you could modify to see what happened with Capital rates but would have to adjust for the block structure.

This shows all the rates we discussed Rate 30 Primary, Rate 30 Secondary, and Rate 38 Interruptible. The Rate 38 Interruptible assumes you would curtail the whole plant during an event.

For what I know about your distribution center I would probably projected a load factor in the 50-60% range. As a point of reference typically most retail stores are about 40%.

Let me know if you have any questions.  
Larry

---

**\*\*CONFIDENTIALITY NOTICE\*\*** This communication constitutes an electronic communication within the meaning of the Electronic Privacy Act, 18 U.S.C. Section 2510, et. seq. Disclosure of this communication is strictly limited to the intended recipient. This communication and its contents and attachments, if any, are confidential and may contain information that is privileged or otherwise exempt from disclosure under applicable law. Receipt by any person or entity other than the intended recipient does not constitute waiver or loss of the confidential or privileged nature of this communication. Any review, dissemination, copying, resubmission, transfer, or distribution in any form by any person or entity other than the intended recipient is strictly prohibited. If you are not the intended recipient, please notify the sender immediately and delete any and all copies of this communication and any attachments. Failure to abide by these provisions will result in legal and equitable action taken against you, as identified in 18 U.S.C. Sections 2520-21.

---

**\*\*CONFIDENTIALITY NOTICE\*\*** This communication constitutes an electronic communication within the meaning of the Electronic Privacy Act, 18 U.S.C. Section 2510, et. seq. Disclosure of this communication is strictly limited to the intended recipient. This communication and its contents and attachments, if any, are confidential and may contain information that is privileged or otherwise exempt from disclosure under applicable law. Receipt by any person or entity other than the intended recipient does not constitute waiver or loss of the confidential or privileged nature of this communication. Any review, dissemination, copying, resubmission, transfer, or distribution in any form by any person or entity other than the intended recipient is strictly prohibited. If you are not the intended recipient, please notify the sender immediately and delete any and all copies of this communication and any attachments. Failure to abide by these provisions will result in legal and equitable action taken against you, as identified in 18 U.S.C. Sections 2520-21.

---

**MONTANA-DAKOTA UTILITIES CO.  
CAPITAL ELECTRIC COOPERATIVE, INC.  
DISCOVERY REQUEST  
DATED MARCH 7, 2014  
CASE NO. PU-13-871**

- 13. Provide copies of the easements you hold to construct facilities required to extend service to the service point at issue in this proceeding and the dates upon which such easements were obtained.**

**Response:**

Montana-Dakota plans to construct the 1,800 feet of 4/0 three phase underground primary from Montana-Dakota's existing overhead primary in an easterly direction to just north of the Menard's site within the McKenzie limits allowed by Montana-Dakota's franchise with the town of McKenzie. The only additional requirement will be a highway crossing permit from the State of North Dakota, to cross Highway 10 from north to south.

**CERTIFICATE OF SERVICE**

A true and correct copy of the foregoing Response to Capital Electric Cooperative, Inc.'s Discovery Request was electronically served and mailed on the 9<sup>th</sup> day of April, 2014, to the following:

Ordean Lars Nygren  
Capital Electric Cooperative, Inc.  
4111 State Street  
PO Box 730  
Bismarck, ND 58502-0730

North Dakota Public Service Commission  
Ryan Norrell  
600 East Boulevard Avenue  
Department 408  
Bismarck, ND 58505-0480

/s/ Caitlin J. Straabe  
Caitlin J. Straabe