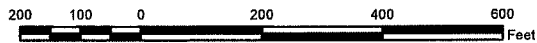




Vegetation Associated with Survey Points

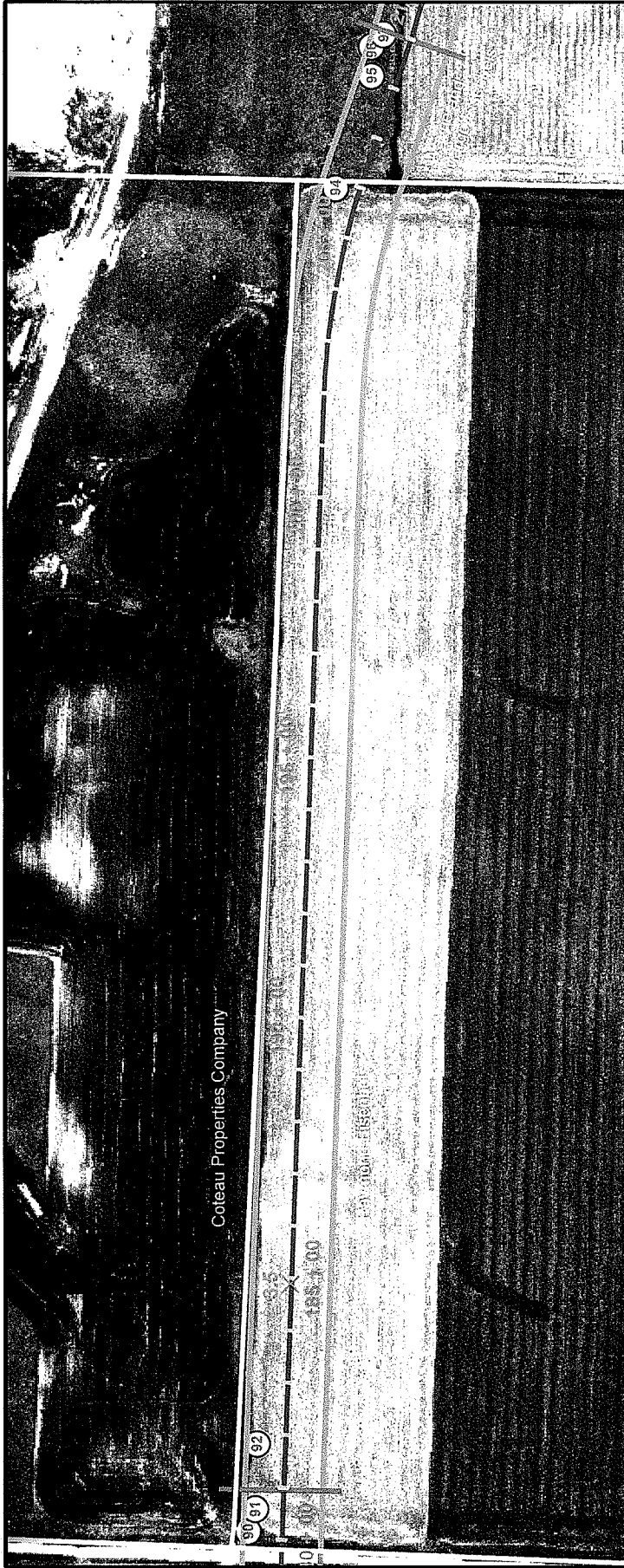
- 75) Buffaloberry (49 plants)
- 76 - 81) Western snowberry (55 clones)
- 82 - 87) Plains cottonwood (11 plants)
- 88) Shelterbelt Entrance Point
Siberian elm (145 plants), Wild plum (5 clones), Lilac (8 plants)
- 89) Shelterbelt Exit Point
- 90) Chokecherry (3 clones)
- 91) Siberian elm (1 plant)



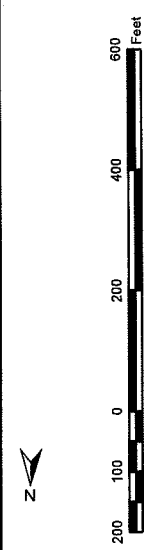
- Woodland Species Survey Point
- 150-foot-wide Construction ROW
- Pipeline Centerline with Station Numbers
- Milepost
- Property Boundary
- Matchlines

**AVS RAW WATER
PIPELINE PROJECT**

Map 6 of 17

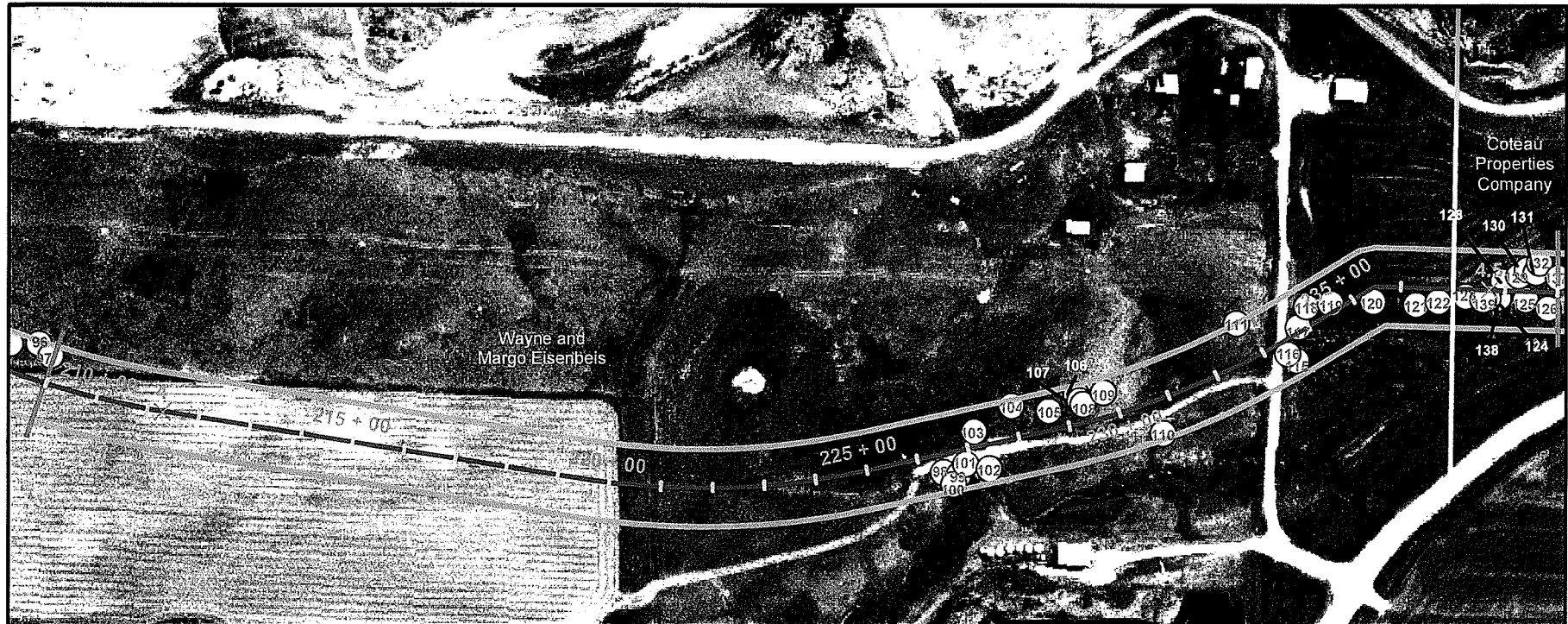


Vegetation Associated with Survey Points
 92 Wild plum (1 plant)
 94 Chokecherry (61 clones), Western snowberry (clones)
 95-97 Western snowberry (80 clones)



- Woodland Species Survey Point
- 150-foot-wide Construction ROW
- Pipeline Centerline with Station Numbers
- Milepost
- Property Boundary
- Matchlines

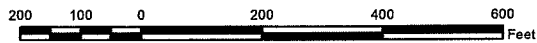
AVS RAW WATER PIPELINE PROJECT



Vegetation Associated with Survey Points

- 98) Buffaloberry (15 plants), Chokecherry (8 clones)
- 99) Buffaloberry (8 plants), Western snowberry (20 clones), Wildrose (8 plants)
- 100) Buffaloberry (4 plants), Wildrose (10 plants)
- 101 - 105) Western snowberry (203 clones)
- 106 - 107) Chokecherry (32 clones)
- 108) Siberian elm (1 plant)
- 109 - 110) Western snowberry (195 clones)
- 111) Chokecherry (6 clones)

- 115 - 126) Perimeter of shelterbelt and wooded area adjacent to intermittent creek
Box elder (34 plants), Siberian peashrub (71 plants), Chokecherry (424 clones),
Gooseberry (7 plants), Green ash (20 plants), Lilac (68 plants), Russian olive (81 plants),
Wild plum (420 clones), Hawthorn (2 plants), Nanking cherry (19 plants)
- 128 - 129) Chokecherry (10 clones)
- 130) Western snowberry (10 clones)
- 131) Chokecherry (30 clones)
- 132) Western snowberry (10 clones)
- 137 - 139) Western snowberry (80 clones)



- Woodland Species Survey Point
- 150-foot-wide Construction ROW
- Pipeline Centerline with Station Numbers
- Milepost
- Property Boundary
- Matchlines

**AVS RAW WATER
PIPELINE PROJECT**

Map 8 of 17



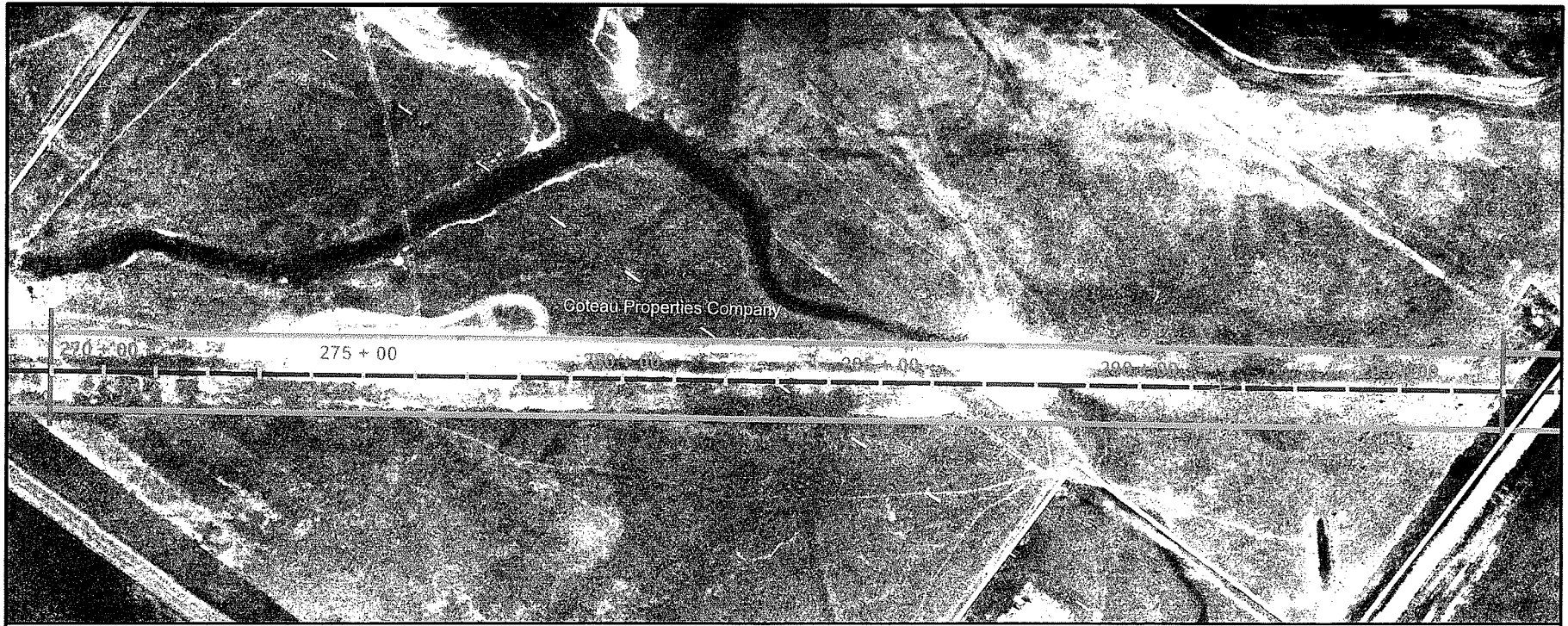
Vegetation Associated with Survey Points

- 133) Box elder (1 plant)
- 134) Chokecherry (50 clones)
- 135 - 136) Western snowberry (30 clones)
- 140) American elm (2 plants), Hawthorn (1 plant)
- 141 - 142) American elm (16 plants)
- 143) Chokecherry (1 plant)
- 144) American elm (9 plants)
- 145) American elm (2 plants), Hawthorn (1 plant)
- 146 - 150) American elm (10 plants)

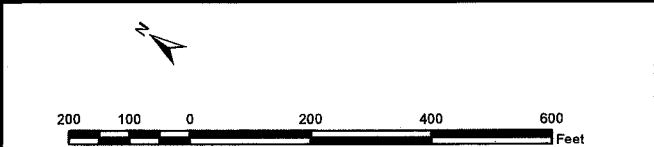


- Woodland Species Survey Point
- 150-foot-wide Construction ROW
- Pipeline Centerline with Station Numbers
- Milepost
- Property Boundary
- Matchlines

AVS RAW WATER PIPELINE PROJECT



Vegetation Associated with Survey Points
(No survey points recorded)



- Woodland Species Survey Point
- ▭ 150-foot-wide Construction ROW
- + Pipeline Centerline with Station Numbers
- × Milepost
- Property Boundary
- Matchlines

**AVS RAW WATER
PIPELINE PROJECT**

Map 10 of 17