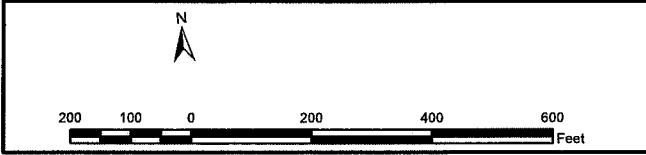




**Vegetation Associated with Survey Points**  
 153) Western snowberry (3 clones)  
 154) Sandbar willow (2 clones)



- Woodland Species Survey Point
- 150-foot-wide Construction ROW
- Pipeline Centerline with Station Numbers
- Milepost
- Property Boundary
- Matchlines

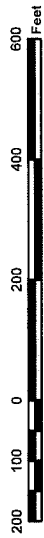
**AVS RAW WATER  
 PIPELINE PROJECT**

Map 11 of 17



**Vegetation Associated with Survey Points**

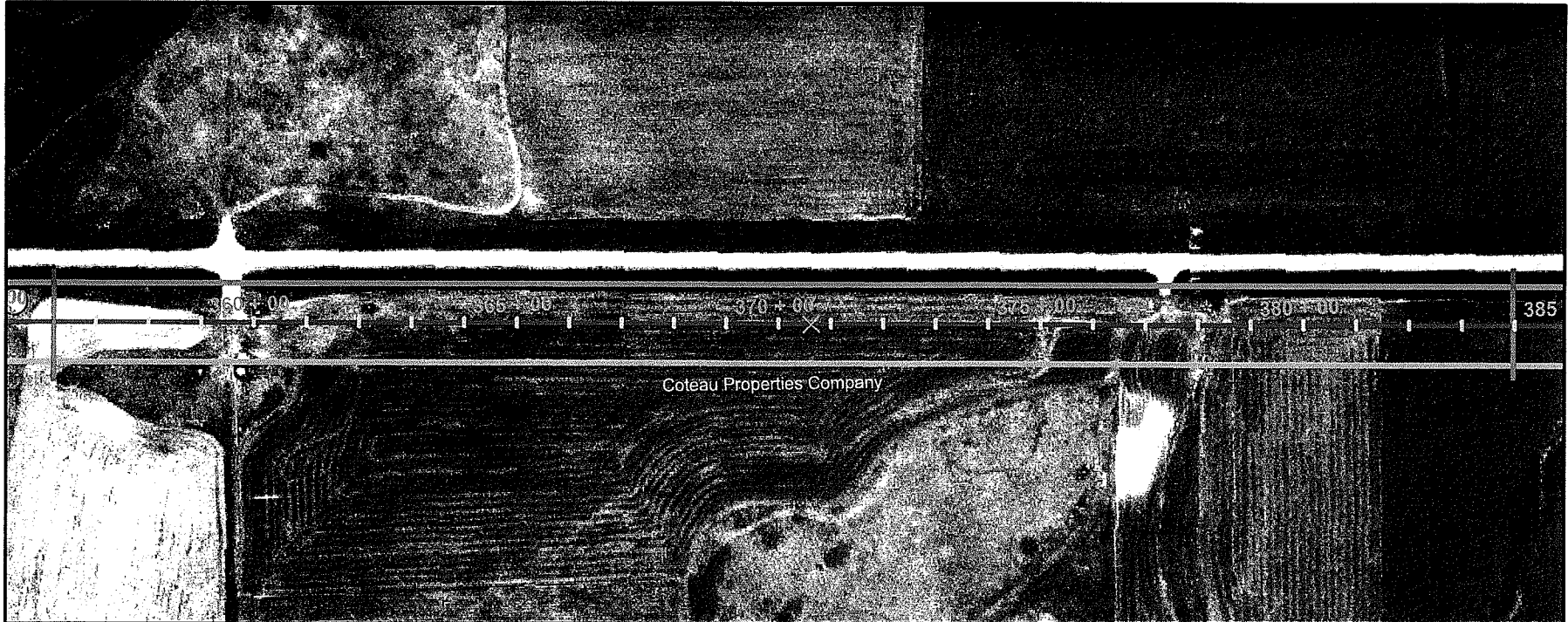
- 156) Perimeter of shrub/scrub wetland (Entrance point)  
Plains cottonwood (776 plants), Sandbar willow (871 clones)
- 168) Perimeter of shrub/scrub wetland (Exit point)
- 170) Sandbar willow (4 clones), Plains cottonwood (3 plants)
- 171) Plains cottonwood (2 plants)
- 172) Plains cottonwood (1 plant)
- 173) Sandbar willow (1 plant)
- 174) Plains cottonwood (2 plants)
- 175) Plains cottonwood (1 plant)
- 176 - 181) Perimeter of shrub/scrub wetland (Entrance point)  
Plains cottonwood (166 plants), Sandbar willow (133 clones)
- 182 - 186) Perimeter of shrub/scrub wetland (Exit point)
- 187) Group of shrubs within shrub/scrub wetland (listed above)




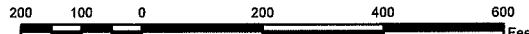

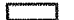




- ⊙ Woodland Species Survey Point
- ▭ 150-foot-wide Construction ROW
- Pipeline Centerline with Station Numbers
- × Milepost
- Property Boundary
- Matchlines

**AVS RAW WATER PIPELINE PROJECT**

Map 12 of 17



**Vegetation Associated with Survey Points**  
 (No survey points recorded)

 	<ul style="list-style-type: none"> <li> Woodland Species Survey Point</li> <li> 150-foot-wide Construction ROW</li> <li> Pipeline Centerline with Station Numbers</li> <li> Milepost</li> <li> Property Boundary</li> <li> Matchlines</li> </ul>	<p><b>AVS RAW WATER          PIPELINE PROJECT</b></p>	<p>Map 13 of 17</p>
--	--	---	---------------------



**Vegetation Associated with Survey Points**

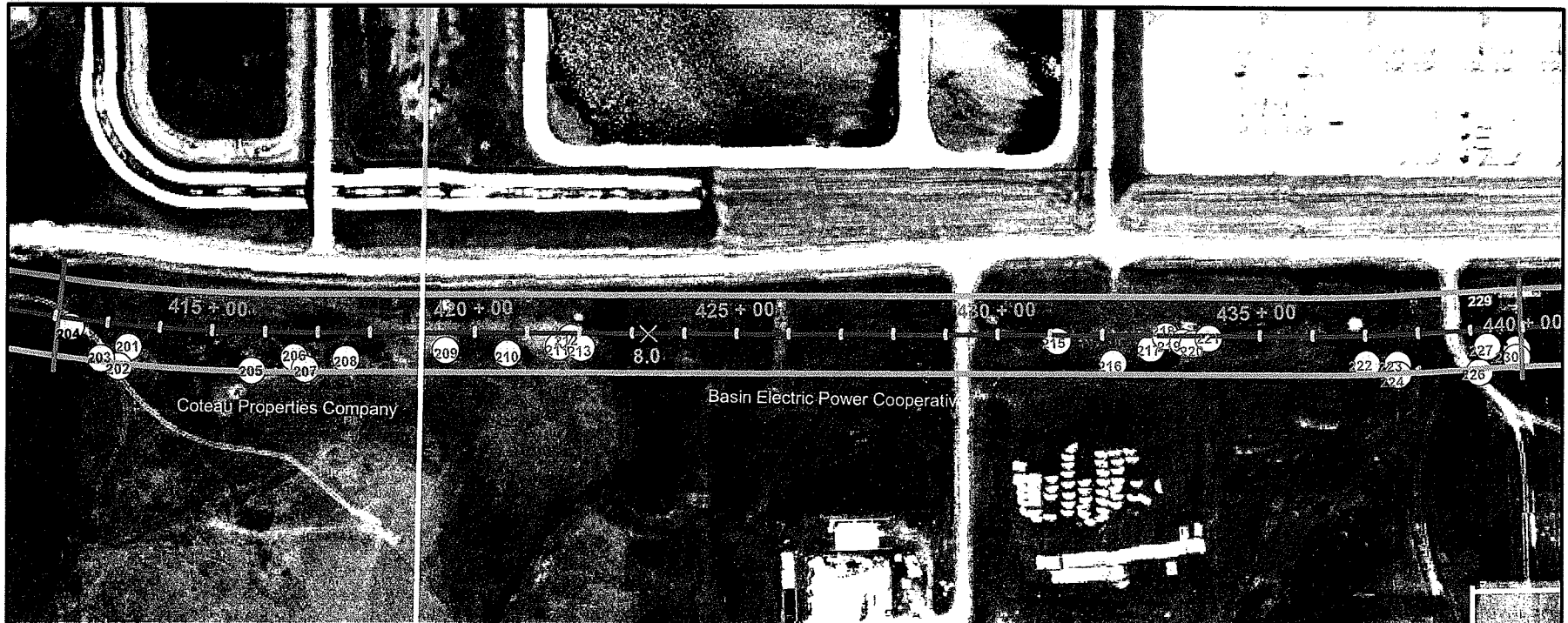
- 188 - 192) Plains cottonwood (5 plants)
- 193) Siberian elm (1 plant)
- 194) Plains cottonwood (6 plants)
- 195 - 200) Sandbar willow (355 clones)



- Woodland Species Survey Point
- 150-foot-wide Construction ROW
- Pipeline Centerline with Station Numbers
- Milepost
- Property Boundary
- Matchlines

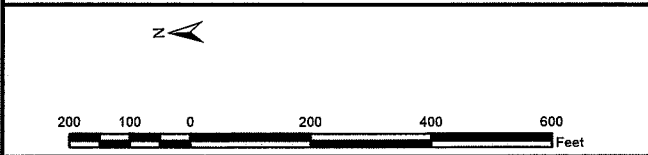
**AVS RAW WATER  
PIPELINE PROJECT**

Map 14 of 17



**Vegetation Associated with Survey Points**

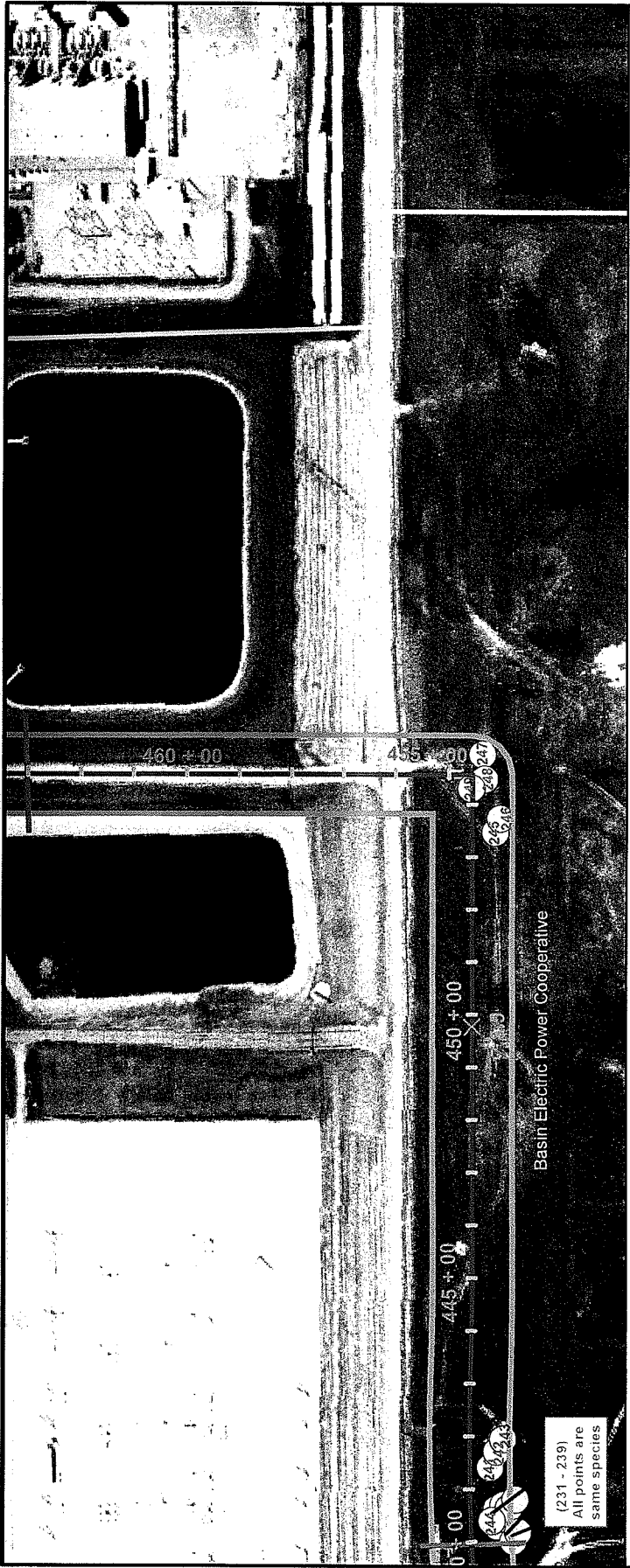
- |   |                                     |
|---|-------------------------------------|
| 201 - 212) Western Snowberry (230 clones) | 221) Western snowberry (10 clones)  |
| 213) Siberian elm (2 plants)              | 222) Siberian elm (34 plants)       |
| 215) Siberian elm (1 plant)               | 223 - 224) Siberian elm (29 plants) |
| 216) Siberian elm (1 plant)               | 226) Siberian elm (2 plants)        |
| 217) Western snowberry (20 clones)        | 227) Siberian elm (13 plants)       |
| 218) Siberian elm (9 plants)              | 229) Siberian peashrub (1 plant)    |
| 219) Western snowberry (15 clones)        | 230) Siberian peashrub (1 plant)    |
| 218) Siberian elm (9 plants)              |                                     |
| 219) Western snowberry (15 clones)        |                                     |
| 220) Green ash (1 plant)                  |                                     |



- Woodland Species Survey Point
- 150-foot-wide Construction ROW
- Pipeline Centerline with Station Numbers
- Milepost
- Property Boundary
- Matchlines

**AVS RAW WATER  
PIPELINE PROJECT**

Map 15 of 17



Basin Electric Power Cooperative

(231 - 239)  
All points are  
same species

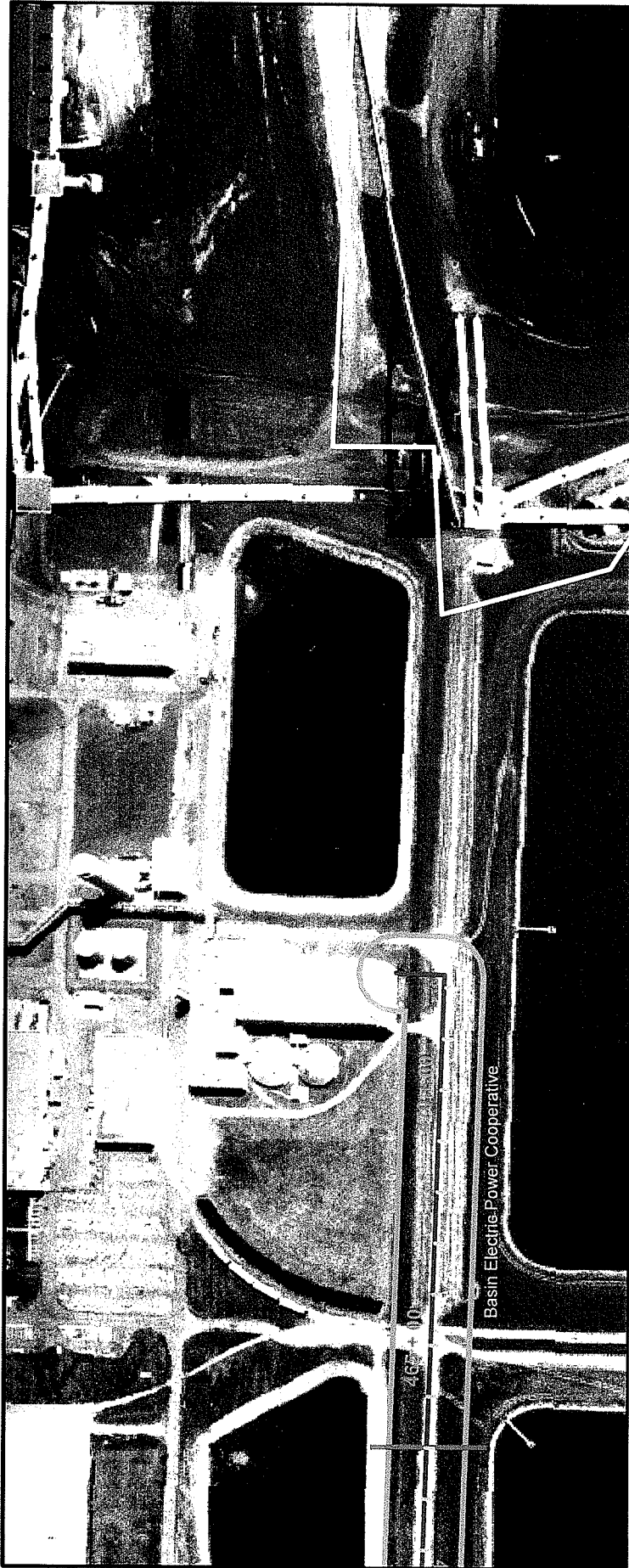
**Vegetation Associated with Survey Points**

- 231 - 239) Perimeter of trees and shrubs
- Siberian elm (5 plants), Siberian peashrub (4 plants), Lilac (12 plants)
- 241) Siberian elm (1 plant)
- 242 - 243) Siberian peashrub (1 plant), Lilac (1 plant)
- 244) Chokecherry (20 clones), Lilac (2 plants)
- 245 - 249) Western snowberry (170 clones)

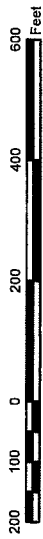


- Woodland Species Survey Point
- 150-foot-wide Construction ROW
- Pipeline Centerline with Station Numbers
- Milepost
- Property Boundary
- Matchlines

**AVS RAW WATER  
PIPELINE PROJECT**



Vegetation Associated with Survey Points  
(No survey points recorded)



- Woodland Species Survey Point
- 150-foot-wide Construction ROW
- Pipeline Centerline with Station Numbers
- Milepost
- Property Boundary
- Matchlines

**AVS RAW WATER  
PIPELINE PROJECT**