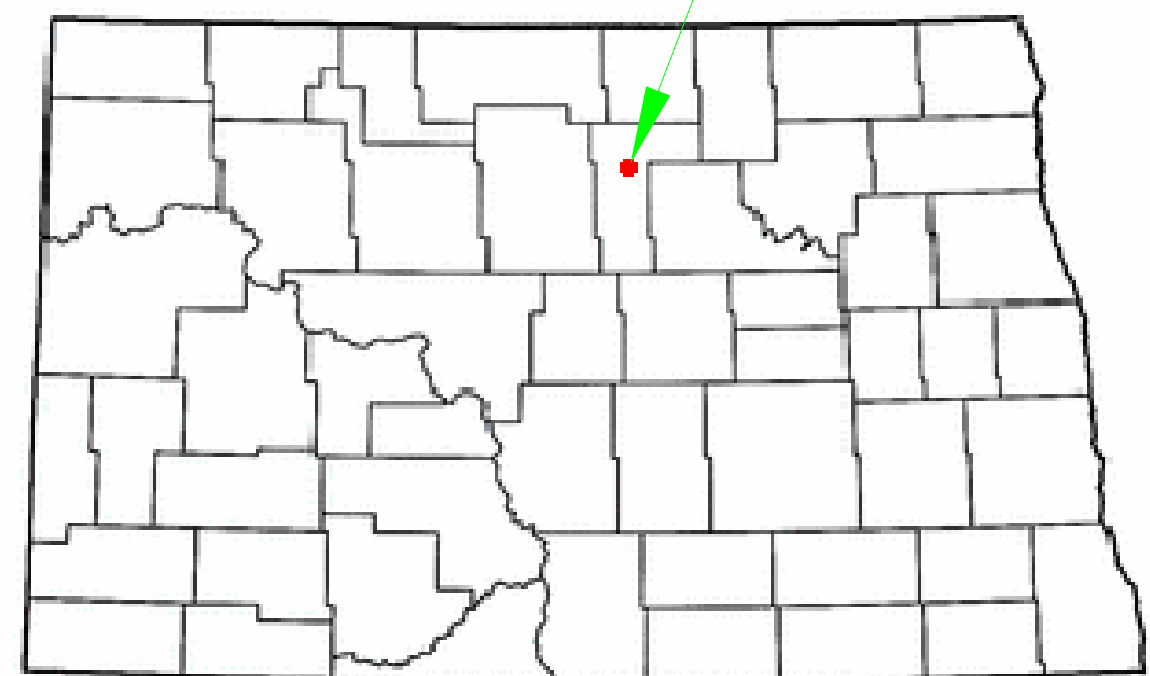
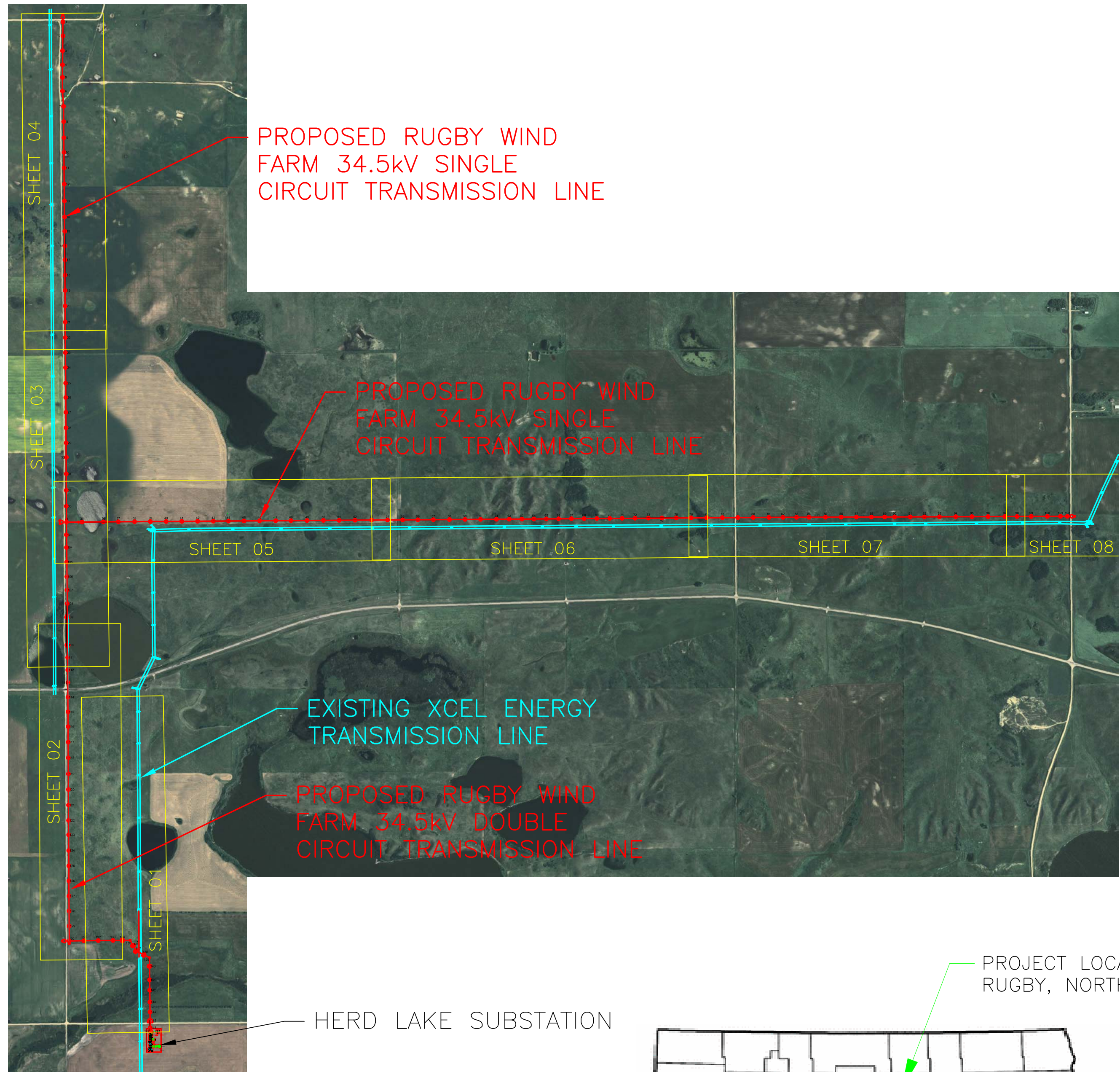


PLAN AND PROFILE WETLANDS LEGEND:

	JURISDICTIONAL - US FISH AND WILDLIFE (NO ACCESS ALLOWED)
	JURISDICTIONAL - ARMY CORPS (RESTRICTED ACCESS ALLOWED)
	NON-JURISDICTIONAL - (ACCESS ALLOWED)



DRAWING INDEX

DRAWING NAME	DESCRIPTION	DATE	REV
RUG-E-511-01	PLAN & PROFILE 34.5kV TRANSMISSION LINE	4/16/10	1
RUG-E-511-02	PLAN & PROFILE 34.5kV TRANSMISSION LINE	4/16/10	1
RUG-E-511-03	PLAN & PROFILE 34.5kV TRANSMISSION LINE	4/16/10	1
RUG-E-511-04	PLAN & PROFILE 34.5kV TRANSMISSION LINE	4/16/10	1
RUG-E-511-05	PLAN & PROFILE 34.5kV TRANSMISSION LINE	4/16/10	2
RUG-E-511-06	PLAN & PROFILE 34.5kV TRANSMISSION LINE	4/16/10	1
RUG-E-511-07	PLAN & PROFILE 34.5kV TRANSMISSION LINE	4/16/10	1
RUG-E-511-08	PLAN & PROFILE 34.5kV TRANSMISSION LINE	4/16/10	1
RUG-E-513-00	PHASING DIAGRAM - 34.5kV TRANSMISSION LINE	4/16/10	1
WF-TAN-1, 2, 3	STRUCTURE FRAMING - SINGLE CIRCUIT TANGENT W/ ARRESTER	4/16/10	1
WF-TAN-RISER	STRUCTURE FRAMING - SINGLE CIRCUIT TANGENT W/ RISER	4/16/10	2
WF-ANG	STRUCTURE FRAMING - SINGLE CIRCUIT ANGLE STRUCTURE - 2"-10"	4/16/10	1
WF-DCTAN	STRUCTURE FRAMING - DOUBLE CIRCUIT TANGENT W/ ARRESTER	4/16/10	1
WF-DE-RISER	STRUCTURE FRAMING - SINGLE CIRCUIT DEADEND W/ RISER	4/16/10	2
WF-DE-XARM	STRUCTURE FRAMING - SINGLE CIRCUIT DEADEND W/ CROSSARM	4/16/10	2
WF-STR16-16A	STRUCTURE FRAMING - DOUBLE CIRCUIT VERTICAL DE - STR 16 & 16A	4/16/10	1
WF-STR44	STRUCTURE FRAMING - TAP STRUCTURE - STR 44	4/16/10	1
WF-DCTAN-XARM	STRUCTURE FRAMING - 2-POLE DOUBLE CIRCUIT TANGENT W/ CROSSARM	4/16/10	1
WF-DCANG-XARM	STRUCTURE FRAMING - 2-POLE DOUBLE CIRCUIT ANGLE W/ CROSSARM	4/16/10	1
WF-DCDE-XARM	STRUCTURE FRAMING - 2-POLE DOUBLE CIRCUIT DEADEND W/ CROSSARM	4/16/10	1
WF-HLK-SUB	HERD LAKE SUBSTATION CONNECTION DETAIL	4/16/10	1
WF-GUY	GUYING DETAILS	4/16/10	1
TM-16	GUIDE FOR INSTALLING WOOD POLE NUMBERING	4/16/10	1
WF-DAMPER	DAMPER DETAILS	4/16/10	1
WF-EMBD	EMBEDMENT DETAILS - WOOD POLES	4/16/10	1
WF-GND	GROUNDING DETAILS - WOOD POLES	4/16/10	1
OPGW-S	OPGW SPLICE DETAILS	4/16/10	1
WF-EROSION	EROSION CONTROL AT US FISH AND WILDLIFE WETLANDS	4/16/10	1
C-6	EROSION CONTROL DETAILS (FOR REFERENCE)	4/16/10	1

GENERAL NOTES:

- CONDUCTOR:
  - 1272 kcmil AAC "NARCISSUS"
  - CONDUCTOR SAG SHOWN AT 212 DEGREES FAHRENHEIT FINAL
  - DESIGN TENSION SHOWN AT NESC HEAVY, UNLESS NOTED OTHERWISE.
- NEUTRAL:
  - 72 FIBER OPGW - 6.26 MILES
  - NEUTRAL SAG SHOWN AT 120 DEGREES FAHRENHEIT FINAL
  - OPGW SPLICE BOXES WILL BE LOCATED AT ALL RISER STRUCTURES AND AT 2 OTHER STRUCTURES AS SHOWN ON THESE PLAN AND PROFILE DRAWINGS TO BE INSTALLED BY OTHERS UNDER SEPARATE CONTRACT.
- MINIMUM GROUND CLEARANCE FOR CONDUCTOR IS 21.2' PER RUS.
- MINIMUM GROUND CLEARANCE FOR NEUTRAL IS 15.5' PER NESC.
- STRUCTURE GROUNDING PER "GND DETAILS"
- SECTION LINES, PROPERTY LINES, AND PUBLIC ROW SHOWN PER WESTWOOD PROFESSIONAL SERVICES SURVEY.
- REFER TO PLAN AND PROFILE FOR EMBEDMENT DEPTHS. EMBEDMENT IS 10%+2' UNLESS NOTED OTHERWISE ON PLAN AND PROFILE.
- CONTRACTOR NOT TO ENTER THE JURISDICTIONAL US FISH AND WILDLIFE WETLANDS FOR ANY REASON.

Rev	Date	By
0 - REVISED SINCE BID	3-4-09	SPT
1 - REVISIONS TO JUMPER	4-14-09	SPT
2 - REVISIONS TO WF-DE-XARM	5-27-09	SPT
3 - RECORD DRAWING	4-16-10	



Bismarck - Denver - Detroit Lakes - Fargo - Minneapolis - Sioux Falls  
 5201 East River Road, Suite 308  
 Minneapolis, Minnesota 55421  
 Phone: 763.571.2500 Fax: 763.571.1168  
 Web: www.ulteig.com  
 Drawn By: LAS  
 Checked By: MPM  
 Approved By: SPT

34.5kV  
 ROUTE MAP

Project Number: 108,0495  
 Date Created: December 3, 2008  
 Dwg No: RUG-E-511-00