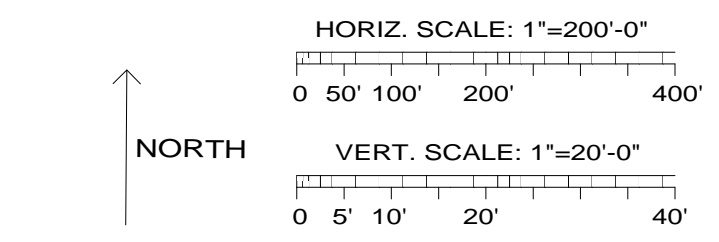
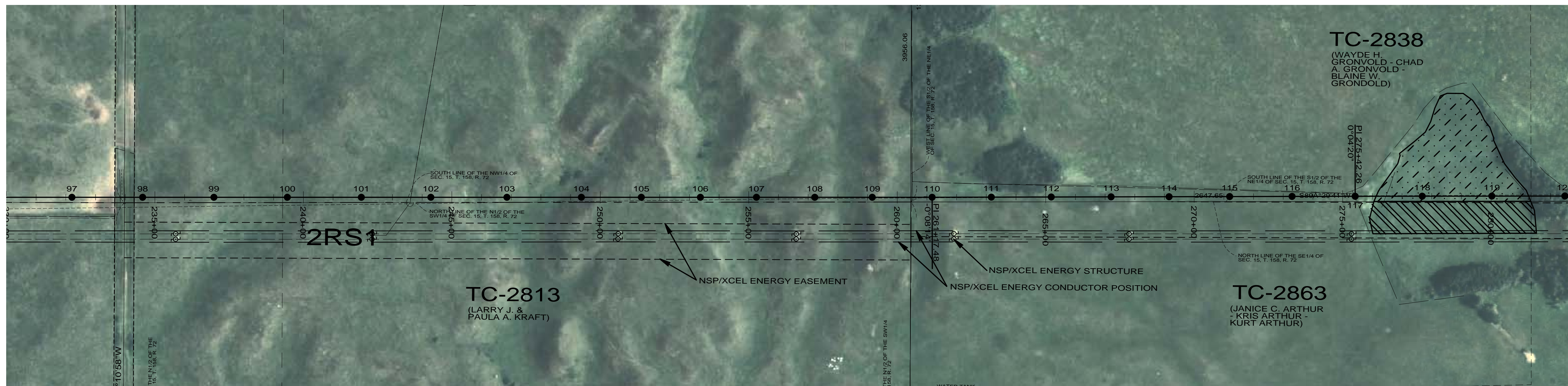


REV	DATE	BY
0 - REVISED SINCE BID	03-04-09	SPT
1 - RECORD DRAWING	04-16-10	

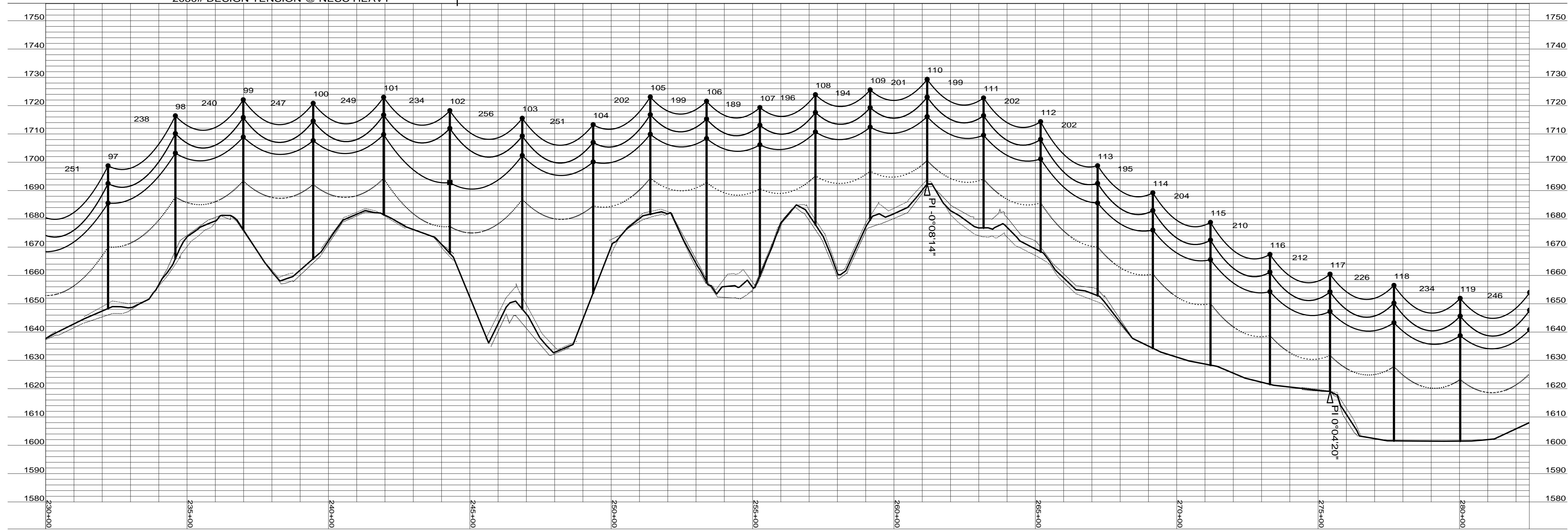


97 STA=232+20.65 1-55/1 WF-TAN-1 WF-GND WF-EMBD TM-16	98 STA=234+58.73 1-55/1 WF-TAN-1 WF-GND WF-EMBD TM-16	99 STA=236+98.80 1-50/1 WF-TAN-1 WF-GND WF-EMBD TM-16	100 STA=239+46.09 1-60/1 WF-TAN-1 WF-GND WF-EMBD TM-16	101 STA=241+95.33 1-45/1 WF-TAN-1 WF-GND WF-EMBD TM-16	102 STA=244+29.45 1-55/1 WF-TAN-RISER-1 OPGW-S WF-GND WF-EMBD TM-16 WF-DAMPER	103 STA=246+85.52 1-75/H1 WF-TAN-1 10%+3' EMBED WF-GND WF-EMBD TM-16	104 STA=249+36.27 1-65/1 WF-TAN-1 WF-GND WF-EMBD TM-16	105 STA=251+38.30 1-45/1 WF-TAN-1 WF-GND WF-EMBD TM-16	106 STA=253+37.23 1-70/1 WF-TAN-1 WF-GND WF-EMBD TM-16	107 STA=255+25.95 1-65/1 WF-TAN-1 WF-GND WF-EMBD TM-16	108 STA=257+22.40 1-50/1 WF-TAN-1 WF-GND WF-EMBD TM-16	109 STA=259+15.99 1-50/1 WF-TAN-1 WF-GND WF-EMBD TM-16	110 STA=261+17.48 1-40/1 WF-TAN-1 WF-GND WF-EMBD TM-16	111 STA=263+16.93 1-50/1 WF-TAN-1 WF-GND WF-EMBD TM-16	112 STA=265+18.72 1-50/1 WF-TAN-1 WF-GND WF-EMBD TM-16	113 STA=267+20.37 1-50/1 WF-TAN-1 WF-GND WF-EMBD TM-16	114 STA=269+15.63 1-60/1 WF-TAN-1 WF-GND WF-EMBD TM-16	115 STA=271+19.46 1-55/1 WF-TAN-1 WF-GND WF-EMBD TM-16	116 STA=273+29.77 1-50/1 WF-TAN-1 WF-GND WF-EMBD TM-16	117 STA=275+42.26 1-45/1 WF-TAN-1 WF-GND WF-EMBD TM-16	118 STA=277+68.25 1-60/1 WF-TAN-1 WF-GND WF-EMBD, CULVERT TM-16	119 STA=280+02.53 1-55/1 WF-TAN-1 WF-GND WF-EMBD, CULVERT TM-16
---	---	---	--	--	---	---	--	--	--	--	--	--	--	--	--	--	--	--	--	--	---	---

CONDUCTOR: 1272 KCMIL AAC "NARCISSUS" 234' RULING SPAN 6300# DESIGN TENSION @ NESC HEAVY

NEUTRAL WIRE: 0.496 IN DIA. 72 FIBER OPGW. 247' RULING SPAN 2050# DESIGN TENSION @ NESC HEAVY

NEUTRAL WIRE: 0.496 IN DIA. 72 FIBER OPGW. 221' RULING SPAN 2000# DESIGN TENSION @ NESC HEAVY



5201 EAST RIVER ROAD, SUITE 308
MINNEAPOLIS, MINNESOTA 55421
PHONE: 763.571.2500 FAX: 763.571.1168
WEB: WWW.ULTEIG.COM
DRAWN BY: NGK
CHECKED BY: MPM
APPROVED BY: SPT

**RUGBY 34.5KV
TRANSMISSION LINE
PLAN AND PROFILE**

PROJECT NUMBER: 108.0495
DATE CREATED: DECEMBER 3, 2008
DWG NO: RUG-E-511-06