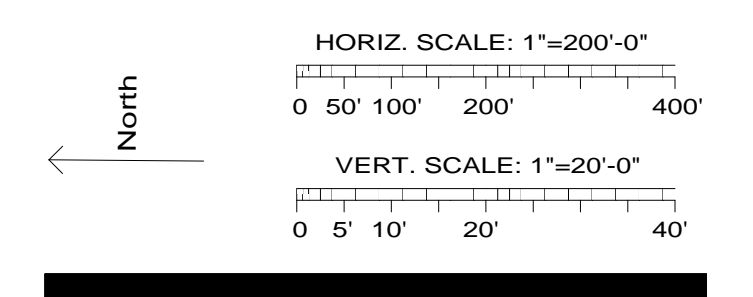
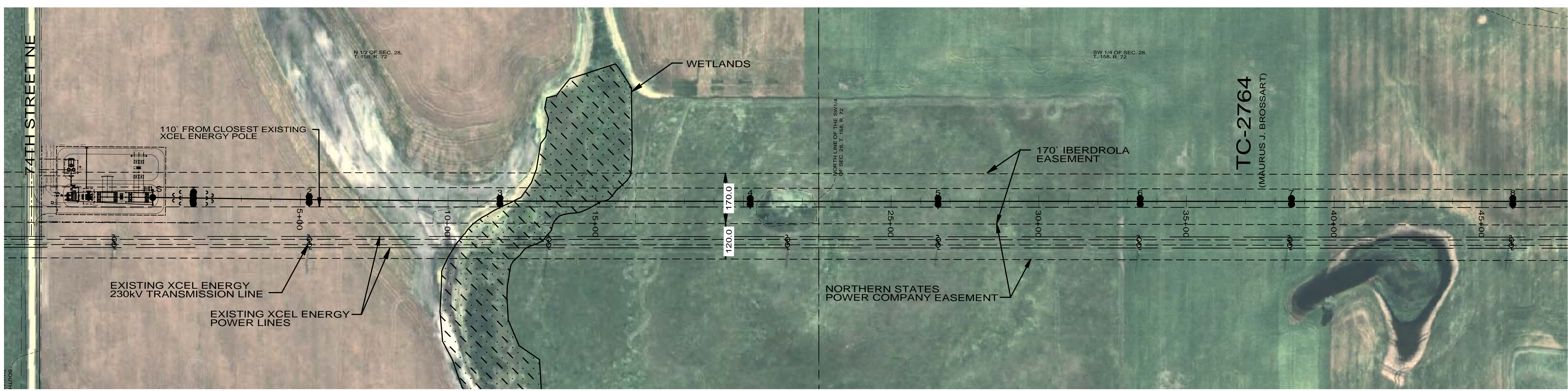
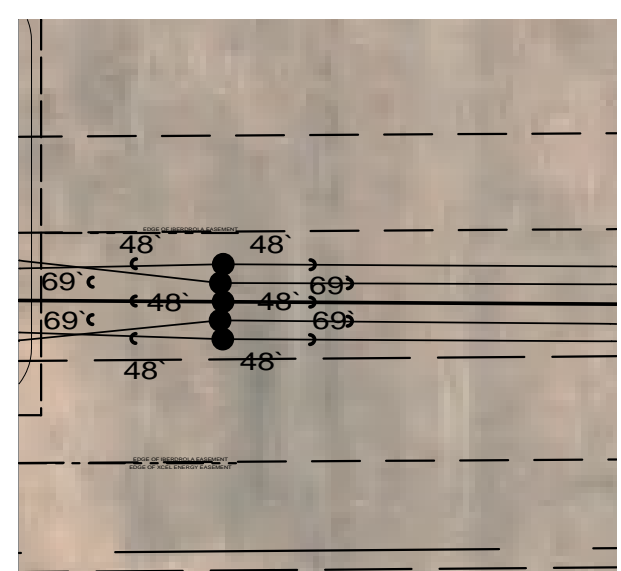


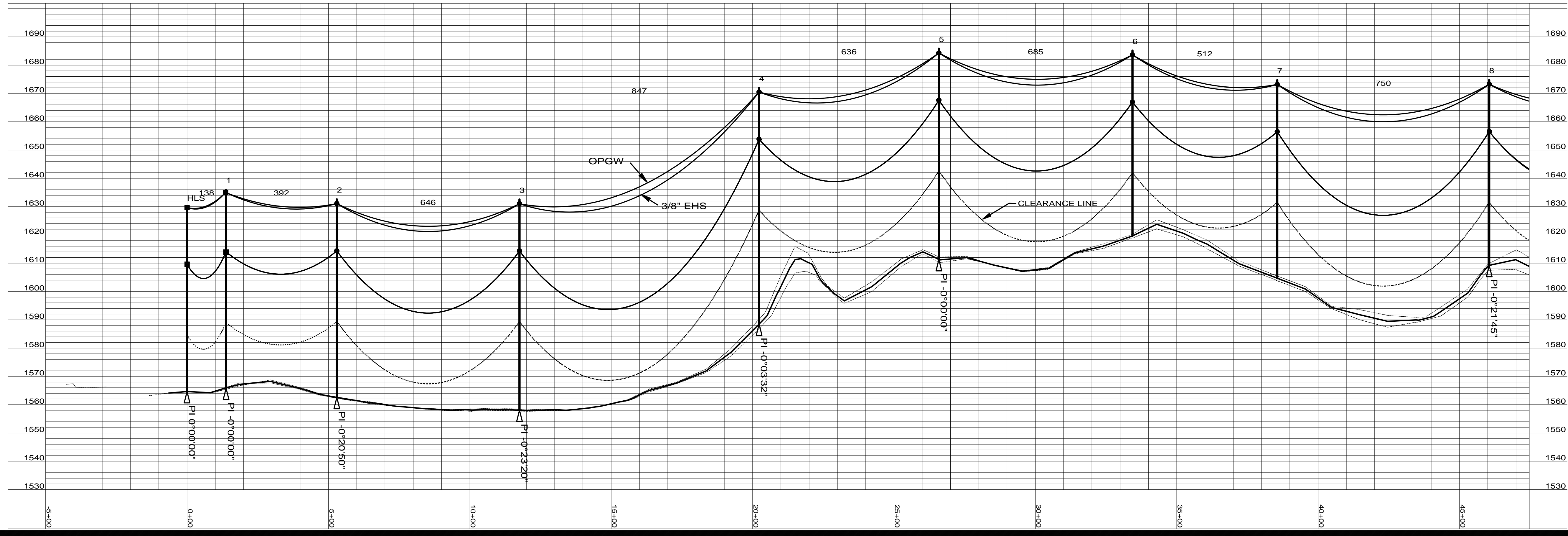
Rev	Date	By
0 - REVISED SINCE BID	03-04-09	SPT
1 - STR #82 & 83 MOVE	05-15-09	SPT
2 - RECORD DRAWING	04-16-10	



Station	Notes
HLS sta=0+00.00	RUG-HLK-SUB OPGW-S
1 sta=1+38.00	3-60/1_2-80/1 SP-DE GND DETAILS EMBED, (5) CULVERTS TM-16 DAMPER (10) GUYING A,B,C NOTE: EMBED 60' POLES 10% + 5'
2 sta=5+29.75	2-80/2 HF-TAN GND DETAILS EMBED, (2) CULVERTS TM-16
3 sta=11+75.65	2-85/2 HF-TAN GND DETAILS EMBED TM-16
4 sta=20+23.08	2-95/2 HF-TAN GND DETAILS EMBED TM-16
5 sta=26+58.89	2-85/2 HF-TAN GND DETAILS EMBED TM-16
6 sta=33+43.46	2-75/2 HF-TAN GND DETAILS EMBED TM-16
7 sta=38+55.59	2-80/2 HF-TAN GND DETAILS EMBED TM-16
8 sta=46+05.18	2-75/2 HF-TAN GND DETAILS EMBED TM-16



GUY DETAIL STR 1



Bismarck-Denver-Detroit Lakes-Fargo-Minneapolis-Sioux Falls  
 5201 East River Road, Suite 308  
 Minneapolis, Minnesota 55421  
 Phone: 763.571.2500 Fax: 763.571.1168  
 Web: www.ultieg.com  
 Drawn By: NGK  
 Checked By: MPM  
 Approved By: SPT

**RUGBY 230kV  
 TRANSMISSION LINE  
 PLAN AND PROFILE**

Project Number: 108\_0495  
 Date Created: December 3, 2008  
 Dwg No: **RUG-E-515-01**