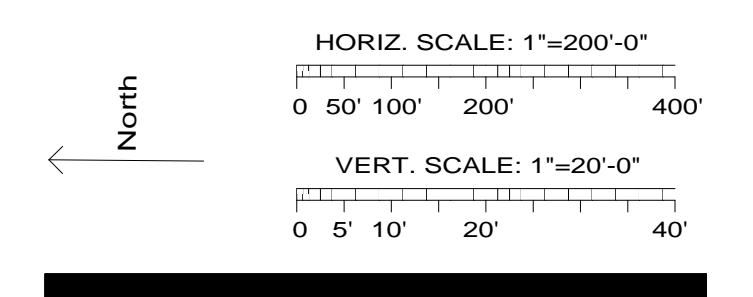
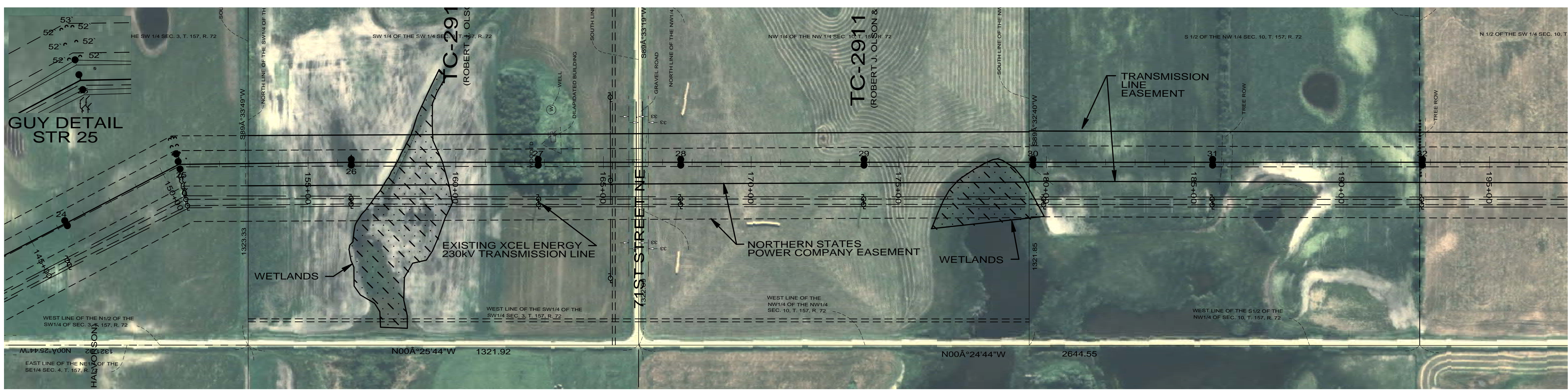
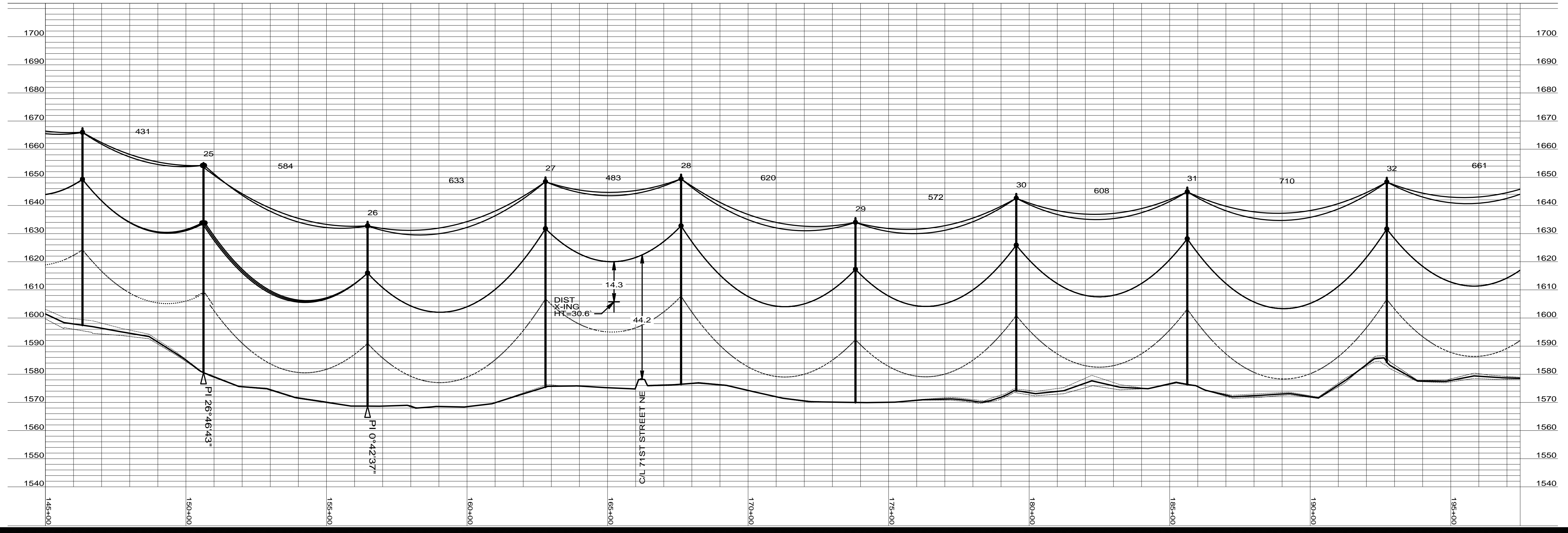


Rev	Date	By
0 - REVISED SINCE BID	03-04-09	SPT
1 - STR #82 & 83 MOVE	05-15-09	SPT
2 - RECORD DRAWING	04-16-10	



25 Sta=150+62.50 3-85/2 3P-ANG GND DETAILS EMBED TM-16 (7) GUYING A, B (1) GUYING C (3) GUYING D	26 Sta=156+46.25 2-75/2 HF-TAN GND DETAILS EMBED TM-16	27 Sta=162+79.16 2-85/2 HF-TAN GND DETAILS EMBED TM-16	28 Sta=167+61.68 2-85/2 HF-TAN GND DETAILS EMBED TM-16	29 Sta=173+82.12 2-85/2 HF-TAN GND DETAILS EMBED, (2) CULVERTS TM-16	30 Sta=179+54.09 2-80/2 HF-TAN GND DETAILS EMBED, (2) CULVERTS TM-16	31 Sta=185+62.54 2-80/2 HF-TAN GND DETAILS EMBED, (2) CULVERTS TM-16	32 Sta=192+72.41 2-75/2 HF-TAN GND DETAILS EMBED TM-16
---	--	--	--	--	--	--	--



Bismarck-Denver-Detroit Lakes-Fargo-Minneapolis-Sioux Falls
 5201 East River Road, Suite 308
 Minneapolis, Minnesota 55421
 Phone: 763.571.2500 Fax: 763.571.1168
 Web: www.ulteig.com
 Drawn By: NGK
 Checked By: MPM
 Approved By: SPT

**RUGBY 230kV
 TRANSMISSION LINE
 PLAN AND PROFILE**

Project Number: 108_0495
 Date Created: December 3, 2008
 Dwg No: **RUG-E-515-04**