

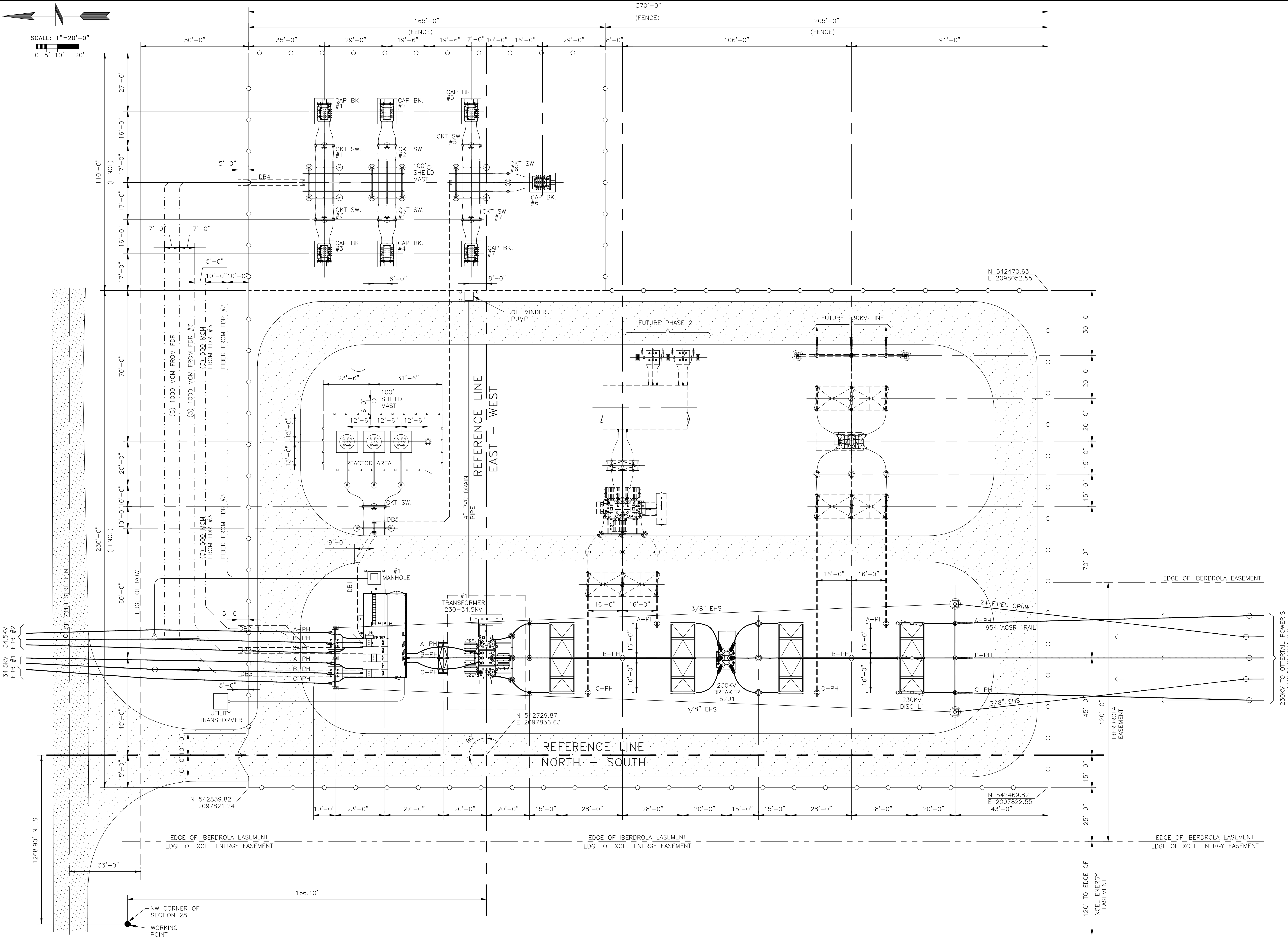
Revision	Date	Number	By
CONSTRUCTION	3/9/09	0	MWS
VENDOR DWGS.	4/22/09	1	MWS
ADD CAPBANKS	10/7/09	2	MWS
CONSTRUCTION	11/9/09	3	MWS
CONFORM TO CONSTRUCTION RECORD	04/16/10	4	CAN

PLAN NOTES OR GENERAL NOTES

REFERENCE DRAWINGS

RUG-C-110	FOUNDATION PLAN
RUG-C-111	GRADING PLAN
RUG-C-113	FOUNDATION DETAILS
RUG-C-120	OIL CONTAINMENT DETAILS
RUG-E-200	SUBSTATION ONE LINE
RUG-E-210	SUBSTATION PLAN
RUG-E-212	SUBSTATION SECTIONS
RUG-E-214	BUS CONNECTION DETAILS
RUG-E-229	ELECTRICAL MATERIAL LIST
RUG-E-230	GROUNDING PLAN
RUG-E-233	CONDUIT PLAN
RUG-S-400	STEEL LAYOUT

NOTES  
 1. SEE MASTER DRAWING LIST FOR COMPLETE LIST OF DRAWINGS.



Bismarck - Denver - Detroit Lakes - Fargo - Minneapolis - Sioux Falls  
 5201 East River Road, Suite 308  
 Minneapolis, Minnesota 55421  
 Phone: 763.571.2500 Fax: 763.571.1168  
 Web: www.ulteig.com  
 Drawn By: DES  
 Checked By: DGN  
 Approved By: MWS

RUGBY WIND PROJECT  
 COLLECTOR SUBSTATION  
 GENERAL ARRANGEMENT

Project Number: 108.0495  
 Date Created: December 18, 2008  
 Dwg No: RUG-G-100-01.DWG