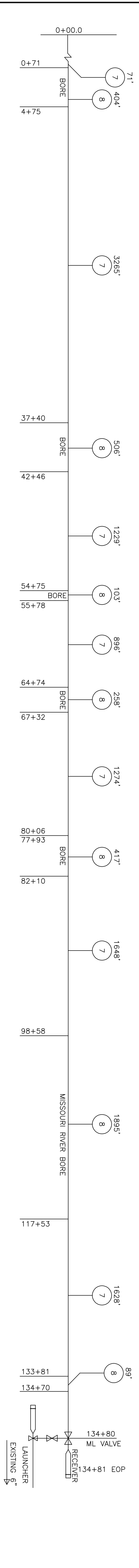
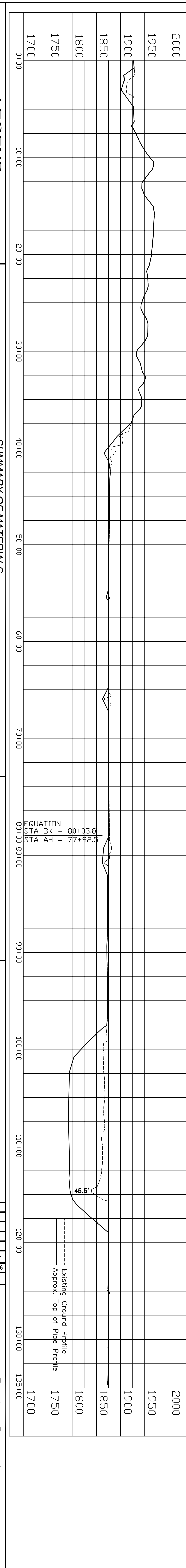




LL No. 412 S1/2NE1/4 Paul & Jean Edridge 1713.1 L.F. or 103.8 Rods	LL No. 413 NE1/4NW1/4 Tim & Charlene Longard 925.2 L.F. or 56.1 Rods	LL No. 414 N1/2NW1/4 Tim & Charlene Longard 158.2 L.F. or 94.4 Rods	LL No. 415 W1/2SW1/4SW1/4 Tim & Charlene Longard 154.7 L.F. or 82.1 Rods	LL No. 416 E1/2SW1/4S1/2NW1/4 Clifton & Maurine Filer 265.4 L.F. or 161.5 Rods	LL No. 418 TRACT 1 Tim Longard 1879.2 L.F. or 113.8 Rods	LL No. 419 TRACT 2 Doris Zaddock 983.2 L.F. or 58.4 Rods	LL No. 422 TRACT 2 Timothy Dillion 941.9 L.F. or 57.1 Rods	LL No. 424 TRACT 1 Doris Zaddock 800.1 L.F. or 50.0 Rods	LL No. 424 TRACT 2 Doris Zaddock 948.1 L.F. or 64.8 Rods
---	---	--	---	---	---	---	---	---	---



WALL THICKNESS OF PIPE (INCHES)	DEPTH OF COVER (FT)	WALL THICKNESS OF PIPE (INCHES)	DEPTH OF COVER (FT)	WALL THICKNESS OF PIPE (INCHES)	DEPTH OF COVER (FT)	WALL THICKNESS OF PIPE (INCHES)	DEPTH OF COVER (FT)	WALL THICKNESS OF PIPE (INCHES)	DEPTH OF COVER (FT)	WALL THICKNESS OF PIPE (INCHES)	DEPTH OF COVER (FT)	WALL THICKNESS OF PIPE (INCHES)	DEPTH OF COVER (FT)
0.365"	5'-24"	0.250"	5'-6"	0.365"	6'-32"	0.250"	5'-6"	0.365"	6'-23"	0.365"	5'-6"	0.365"	5'-23"
0.365"	5'-6"	MISSOURI RIVER X-ING, 45'-80'	0.365"	0.365"	5'-6"	0.365"	5'-6"	0.365"	5'-6"	0.365"	5'-6"	0.365"	5'-6"
0.365"	5'-6"	0.365"	5'-6"	0.365"	5'-6"	0.365"	5'-6"	0.365"	5'-6"	0.365"	5'-6"	0.365"	5'-6"



ITEM	DESCRIPTION	QUANTITY	ITEM	DESCRIPTION	QUANTITY
1	4.0" O.D. x 1.88 W.T. X-42/52 HF-ERW PIPE FBE COATING	11	11	6.0" VALVE ASSEMBLY	
2	4.0" O.D. x 2.37 W.T. X-42/52 HF-ERW PIPE FBE COATING	12	12	8.0" VALVE ASSEMBLY	
3	6.0" O.D. x 1.88 W.T. X-42/52 HF-ERW PIPE FBE COATING	13	13	10.0" VALVE ASSEMBLY	
4	6.0" O.D. x 2.81 W.T. X-42/52 HF-ERW PIPE FBE COATING	14	14	AERIAL MARKER	
5	8.0" O.D. x 1.88 W.T. X-42/52 HF-ERW PIPE FBE COATING	15	15	GROUND MARKER	
6	8.0" O.D. x 3.22 W.T. X-42/52 HF-ERW PIPE FBE COATING	16	16	CATHODIC PROTECTION TEST STA.	
7	10.0" O.D. x 2.50 W.T. X-42/52 HF-ERW PIPE FBE COATING	10011.3'	17	LAUNCHER RECEIVER ASSEMBLY	1
8	10.0" O.D. x 3.65 W.T. X-42/52 HF-ERW PIPE FBE COATING	3683'			
9	4.0" CHECK VALVE ASSEMBLY				
10	6.0" CHECK VALVE ASSEMBLY				

LEGEND

- STATE HIGHWAY
- RAILROAD CROSSING
- MAINLINE VALVE
- CHECK VALVE
- GROUND MARKER
- AERIAL MARKER
- CATHODIC PROTECTION TEST STATION
- FOREIGN PIPELINE
- OVERHEAD ELEC. LINE
- TELEPHONE CABLE
- FENCE LINE

SUMMARY OF MATERIALS

SCALE: HORIZONTAL 1"=500' VERTICAL 1"=100'

PLAINS ALL AMERICAN PIPELINE, L.P.

Trenton Expansion
Plains Marketing
Mekenzie County, North Dakota

AFE 56351
Trenton 10" Loop Extension
Record Drawing

REV. DATE REVISION BY

CMH 03/31/2006 KJ 03/24/2006

DRAWN DATE CHECKED DATE

PROJECT APPROVAL: Kadmas Lee & Jackson Engineers, Surveyors and Planners

SCALE: 1"=500'

DATE: 03/31/2006

PROJECT NO: 001ND-M-0100

REV: