

LL No. 7
ROW OF HWY 1804
Sec. 10, T.153N; R.102W.
State of North Dakota
210.0 L.F. or 12.7 Rods

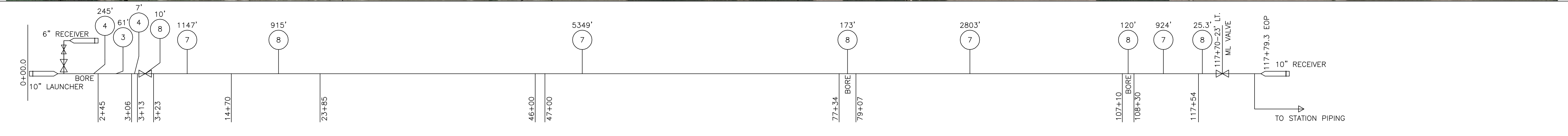
LL No. 477
ALL, N&W OF HWY 1804
Sec. 10, T.153N; R.102W.
Thomas Martin
4207.3 L.F. or 255.0 Rods

LL No. 477 (Cont'd)
ALL, N&W OF HWY 1804
Sec. 10, T.153N; R.102W.
Thomas Martin

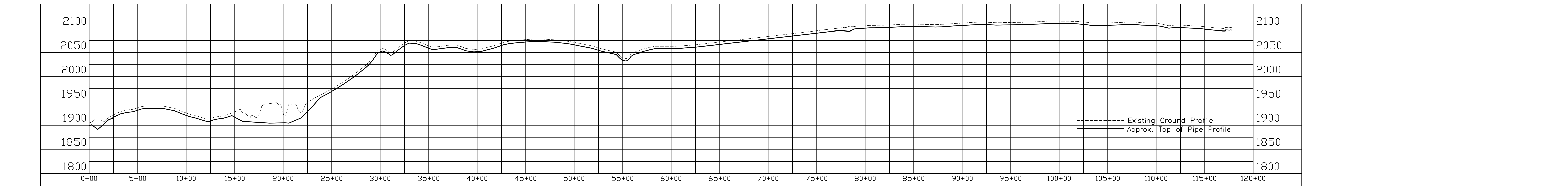
LL No. 478
SE 1/4 EX ST
Sec. 3, T.153N; R.102W.
Virginia Redfield
3178.6 L.F. or 192.6 Rods

LL No. 479
NE 1/4
Sec. 3, T.153N; R.102W.
John & Marianne Eli
2916.0 L.F. or 176.7 Rods

LL No. 480
E 1/2 SE 1/4
Sec. 3, T.154N; R.102W.
John & Marianne Eli
941.1 L.F. or 57.0 Rods



WALL THICKNESS OF PIPE (INCHES)	0.281"	0.188"	0.365"	0.250"	0.365"	0.250"	0.365"	0.250"	0.365"	0.250"	0.365"
DEPTH OF COVER RANGE (FT)	5'-21'	5'-6'	5'-6'	5'-40'	6'	5'-6'	6'-38'	5'-6'	5'-8'	5'-6'	ABOVE GRADE

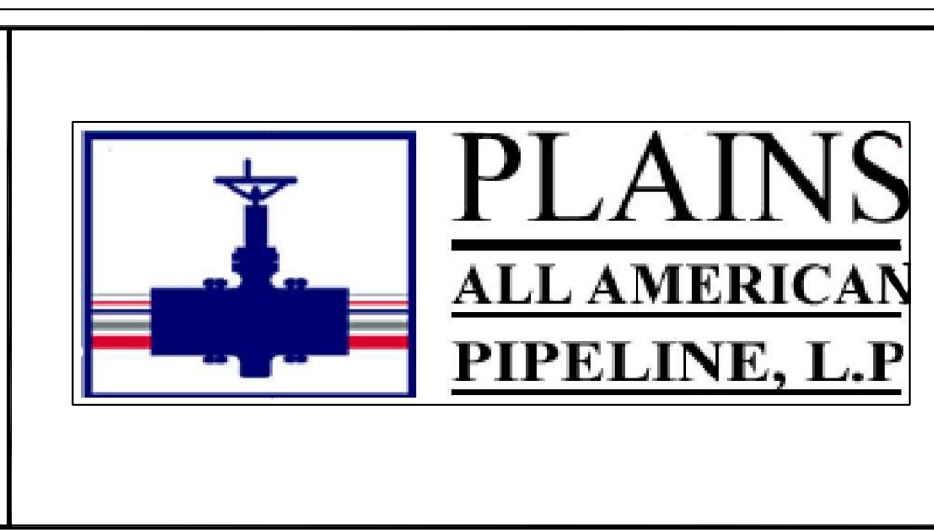
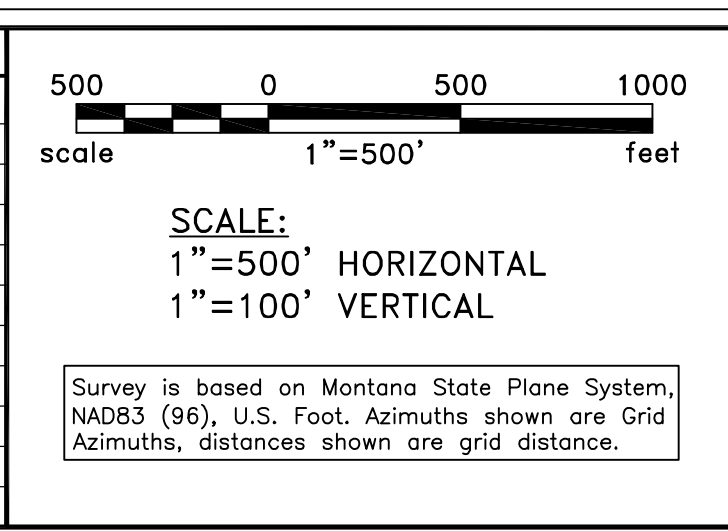


LEGEND

- ⊕ US HIGHWAY
- ⊙ STATE HIGHWAY
- ⚡ RAILROAD CROSSING
- ⊕ MAINLINE VALVE
- ⊕ CHECK VALVE
- ⊕ GROUND MARKER
- ⊕ AERIAL MARKER
- ⊕ CATHODIC PROTECTION TEST STATION
- ⊕ FOREIGN PIPELINE
- ⊕ OVERHEAD ELEC. LINE
- ⊕ TELEPHONE CABLE
- ⊕ FIBER OPTIC CABLE
- ⊕ FENCE LINE

SUMMARY OF MATERIALS

ITEM	DESCRIPTION	QUANTITY	ITEM	DESCRIPTION	QUANTITY
1	4.0" O.D. x .188 W.T., X-42/52, HF-ERW, PIPE FBE COATING	61'	11	6.0" VALVE ASSEMBLY	2
2	4.0" O.D. x .237 W.T., X-42/52, HF-ERW, PIPE FBE COATING	12	12	8.0" VALVE ASSEMBLY	2
3	6.0" O.D. x .188 W.T., X-42/52, HF-ERW, PIPE FBE COATING	61'	13	10.0" VALVE ASSEMBLY	2
4	6.0" O.D. x .281 W.T., X-42/52, HF-ERW, PIPE FBE COATING	252'	14	AERIAL MARKER	15
5	8.0" O.D. x .188 W.T., X-42/52, HF-ERW, PIPE FBE COATING	10,223'	15	GROUND MARKER	15
6	8.0" O.D. x .322 W.T., X-42/52, HF-ERW, PIPE FBE COATING	12,433'	16	CATHODIC PROTECTION TEST STA.	3
7	10.0" O.D. x .250 W.T., X-42/52, HF-ERW, PIPE FBE COATING	10,223'	17	LAUNCHER RECEIVER ASSEMBLY	2
8	10.0" O.D. x .365 W.T., X-42/52, HF-ERW, PIPE FBE COATING	12,433'			
9	4.0" CHECK VALVE ASSEMBLY				
10	6.0" CHECK VALVE ASSEMBLY				



Trenton Expansion
Plains Marketing
McKenzie County, ND

AFE 56291
Trenton 10" Loop
Record Drawing

REV.	DATE	BY	REASON

CHKD.	DATE	CHKD.	DATE

PROJECT APPROVAL	DATE	SCALE	JOB	DRAWING NO.	REV.
		1"=500'		D05ND-ML-0100	