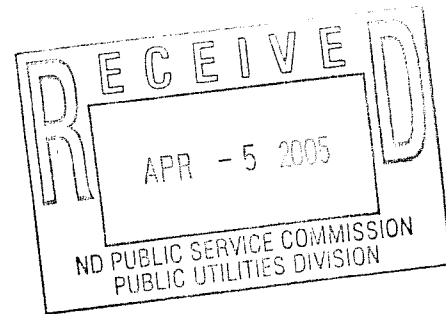




FPL Energy

April 4, 2005

Ilona A. Jeffcoat-Sacco
Executive Secretary
North Dakota Public Service Commission
600 E. Boulevard, Dept.408
Bismarck, ND 58505-0480



Subject: Letter of Intent to File an Application for a Waiver of Procedures and Time Schedule, and a Combined Certificate of Corridor Compatibility and a Transmission Facility Route Permit

Dear Secretary Jeffcoat-Sacco:

In accordance with Section 49-22-07.1 NDCC and Chapter 69-06-03 of the North Dakota Public Service Commission (PSC's) administrative rules, FPL Energy LLC respectfully submits one original and ten (10) copies of this Letter of Intent to File an Application for a Waiver of Procedures and Time Schedule, and a combined Certificate of Corridor Compatibility and a Transmission Facility Route Permit application.

The permit would authorize the construction of an approximately 30-mile long 230kV radial electric transmission line in the State of North Dakota. The proposed radial electric transmission line will allow the Burleigh County Wind Energy Center to contribute at least 49.5MW of renewable energy to the power grid.

FPL Energy is requesting that the PSC, pursuant to Section 49-22-07.2 NDCC, Chapter 69-06-03-01, shorten to one week the requirement to file the Letter of Intent one-year prior to the filing of the Application for Certificate. The reason for this request is that the transmission line must be in-service by December 31, 2005 in order for the Burleigh County Wind Energy Facility to qualify for the federal Production Tax Credit (PTC).

FPL Energy intends to request a Waiver of Procedures and Time Schedules (Chapter 69-06-06) to enable a combined Corridor and Route proceeding. This would allow FPL Energy to complete a combined Corridor Certificate and Route Permit for this proposed radial electric transmission line. FPL Energy would like to file the combined application on or about April 11, 2005. It is our hope to have the permit issued by July 1, 2005.

The following information is provided to meet Chapter 62-06-03-02 Contents of the Letter of Intent:

1. ***Description of size and type of facility and the area to be served:***

The proposed radial electric transmission line would extend from the Square Butte Cooperative's Center Substation (an AC/DC conversion substation) located in Oliver County approximately 30-miles to its terminus at the proposed Burleigh County Wind Energy Center located approximately 15 miles east of the Missouri River in Burleigh County. The proposed radial electric transmission line will allow the Burleigh County Wind Energy Center to contribute at least 49.5MW of renewable energy to the power grid.

2. ***A map of the study area for the proposed site or corridor:***

See attached map showing the proposed radial electric transmission line as a thin east-west red line.

3. ***The anticipated construction and operation schedule:***

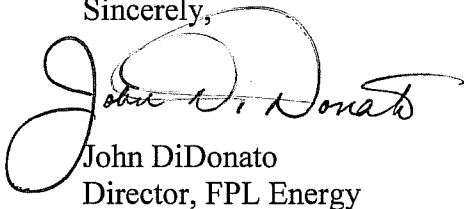
Construction of the radial electric transmission line is expected to begin in July 2005 with completion on or about December 23, 2005.

4. ***An estimate of the total cost of construction:***

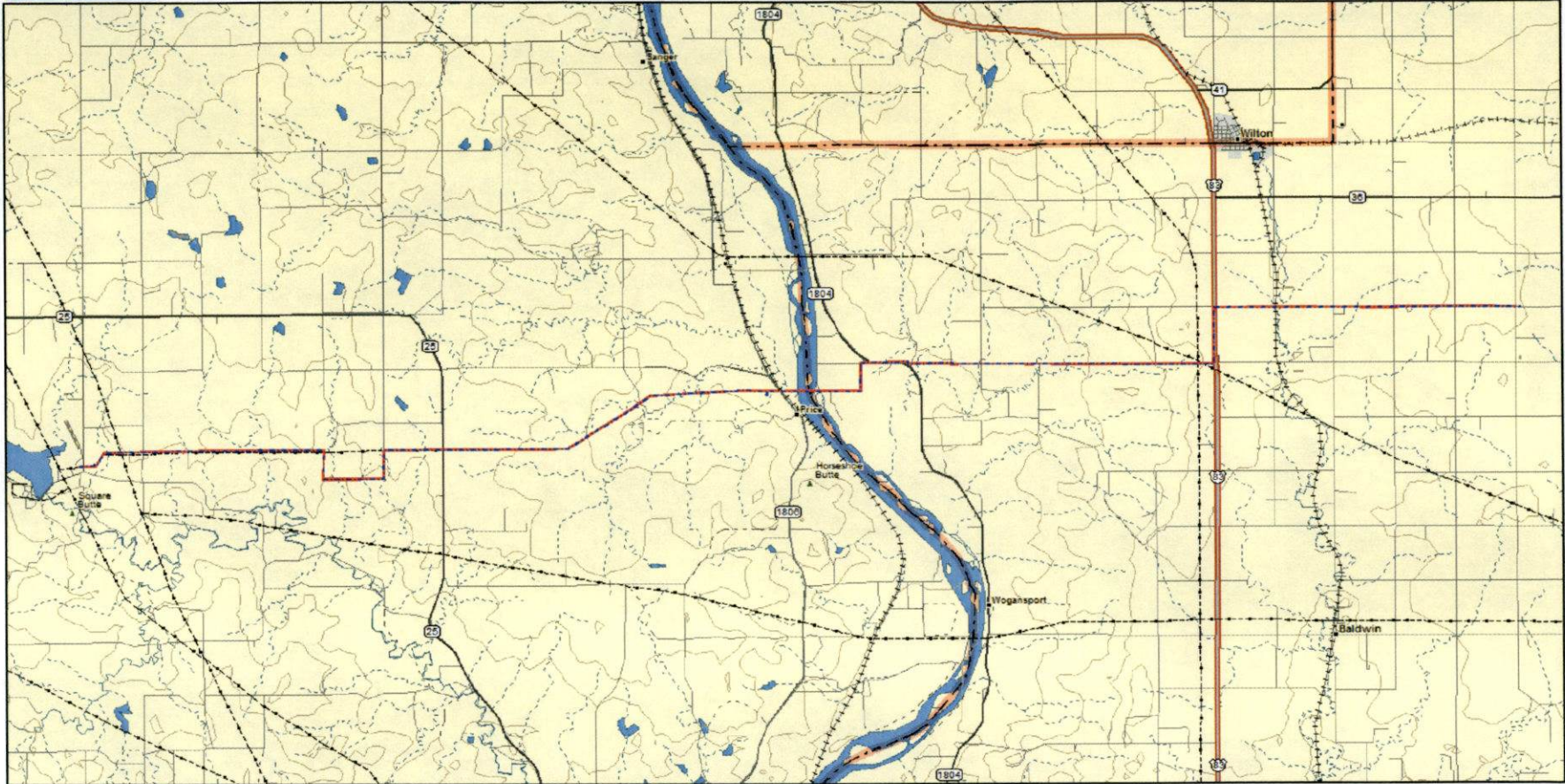
FPL Energy estimates the cost of constructing the proposed transmission line at approximately \$5M.

Please contact John DiDonato at 561-691-7232 or Kenneth Stein at 561-762-5875 with any questions or comments on this Letter of Intent.

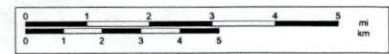
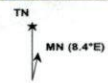
Sincerely,



John DiDonato
Director, FPL Energy



© 2003 DeLorme. XMap®.
www.delorme.com



Data Zoom 10-4