

DONALD A. NEGAARD
JAMES E. NOSTDAHL
CAROL K. LARSON
DAVID J. HOGUE
REED A. SODERSTROM
BRENT M. OLSON
DEBRA L. HOFFARTH
SCOTT M. KNUDSVIG
ERIKA L. SLEGER
RYAN D. SANDBERG

PH
LAW OFFICES OF
PRINGLE & HERIGSTAD, P.C.

2525 ELK DRIVE
POST OFFICE BOX 1000
MINOT, NORTH DAKOTA 58702
(701) 852-0381
FAX (701) 857-1361
E-mail: pringle@srt.com

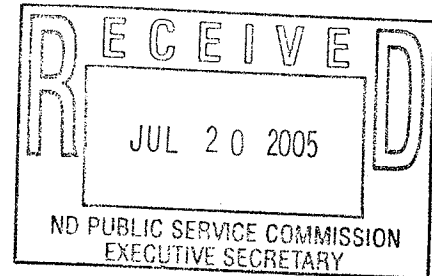
OF COUNSEL
HERBERT L. MESCHKE

RETIRED
THOMAS A. WENTZ
MARK F. PURDY
JAN M. SEBBY

KENNETH G. PRINGLE
(1914-1983)
ROGER O. HERIGSTAD
(1919-2003)

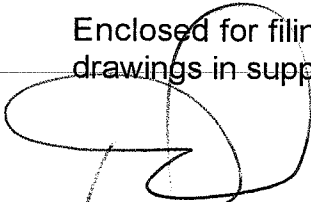
July 19, 2005

Illona A. Jeffcoat-Sacco
Executive Secretary
North Dakota Public Service Commission
600 East Boulevard Avenue, Department 408
Bismarck, ND 58505-0480



**Re: In the matter of FPL Energy Burleigh County Wind, LLC (Burleigh County Wind) and Central Power Electric Cooperative, Inc.'s (Central Power) Amended Application for a Waiver of Procedures and Time Schedules and Consolidated Applications for a Certificate of Corridor Compatibility and Route Permit for a 230-kV Transmission Facility in Burleigh County, North Dakota.
Case No. PU-05-205**

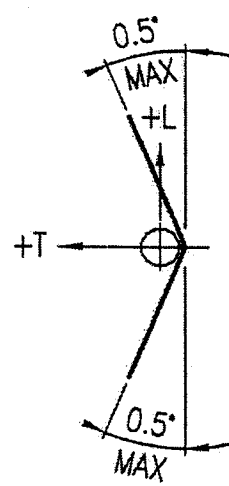
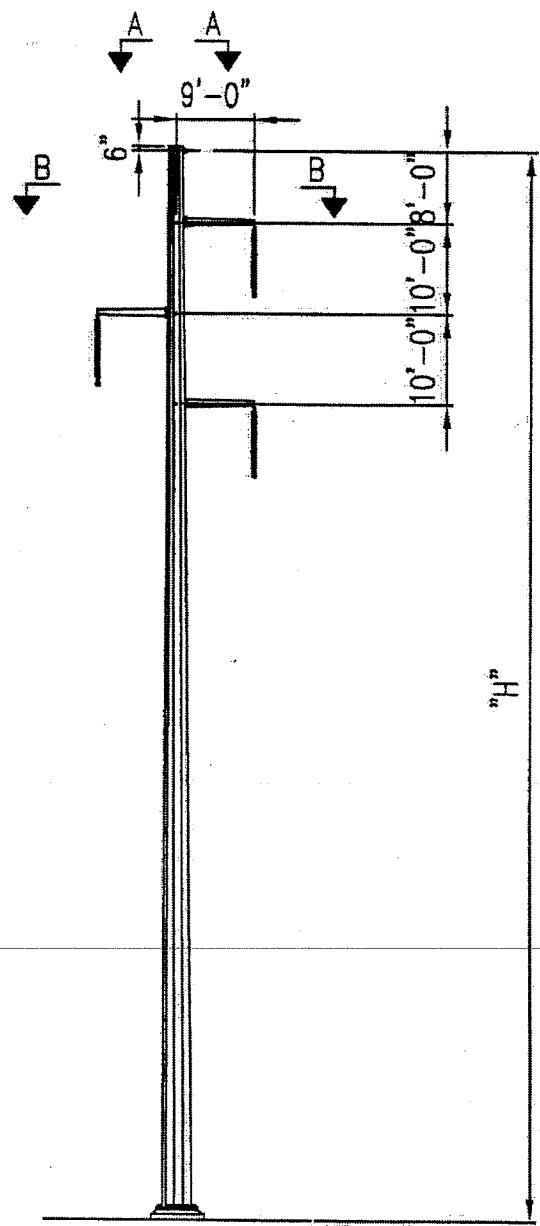
Enclosed for filing in the above-captioned matter are eleven copies of plan and profile drawings in support of the amended application filed in this matter.


Don Negaard
Pringle & Herigstad, P.C.
Attorneys for Co-applicant,
Central Power Electric Cooperative, Inc.

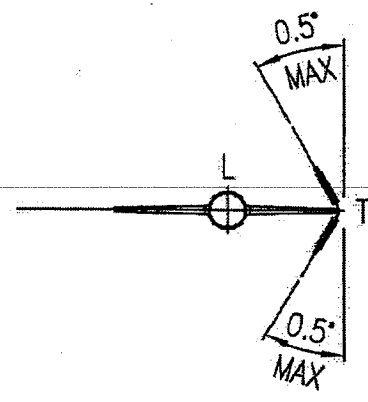
jt

Enclosures

RECEIVED
 JUL 20 2005
 ND PUBLIC SERVICE COMMISSION
 EXECUTIVE SECRETARY



SECTION A-A
 AC - 64/528 OPGW



SECTION B-B
 230 KV: 795 KCMIL "DRAKE"

© STANLEY CONSULTANTS
 CADD A1-R3

A-FOR FABRICATION	JB	NC	MJ	7/22
REVISIONS	DWN	APVD	APVD	DATE

Stanley Consultants INC.

KEM, INC.
GRAND FORGE, ND

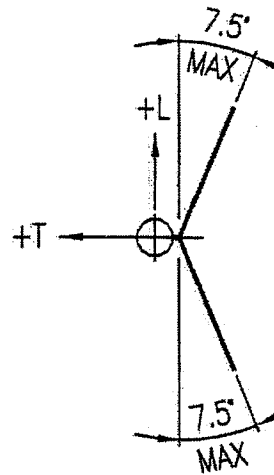
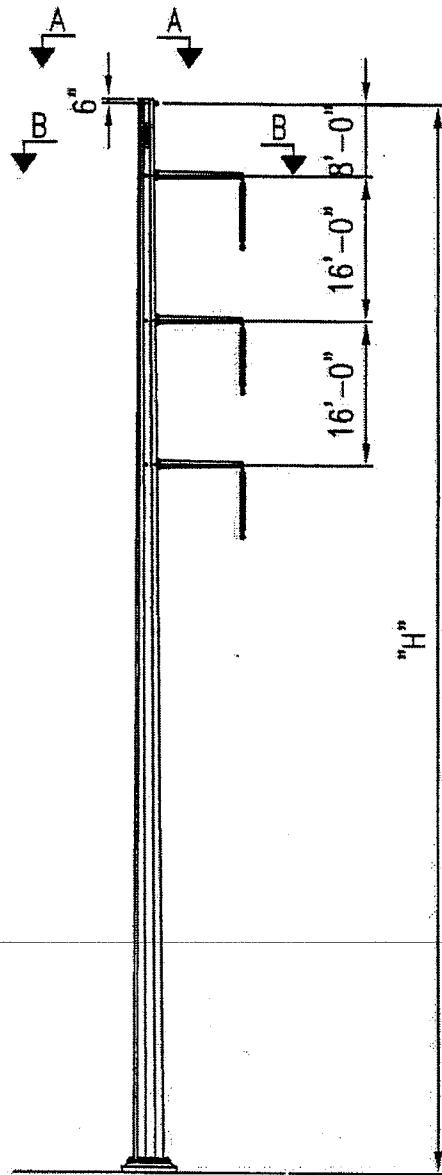
CENTRAL POWER
 ELECTRIC COOPERATIVE

DESIGNED	N. CLEMENTS
DRAWN	J. BOWLIN
CHECKED	M. JURGEMEYER
APPROVED	_____
APPROVED	_____
DATE	07/11/05

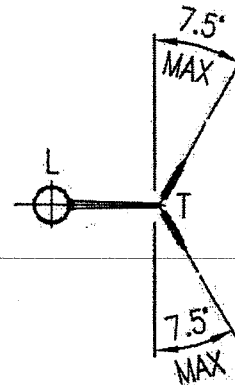
BURLEIGH WIND
 230KV TRANSMISSION
 LINE

TANGENT 0'-1"
 STEEL POLE POINT LOADS
 SHEET 1 OF 2

SCALE: NTS	
NO. 18447	REV.
TUS 1	A






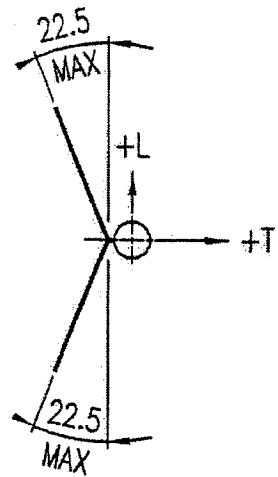
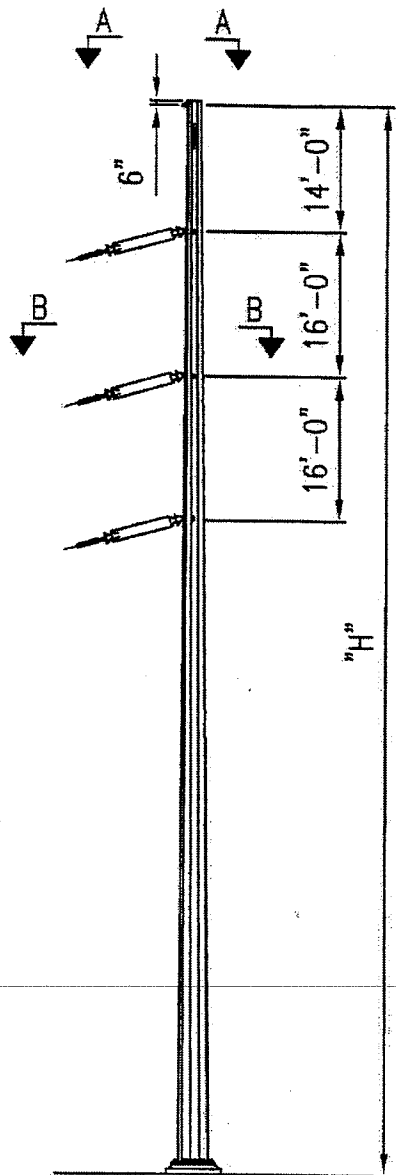
SECTION A-A
AC - 64/528 OPGW



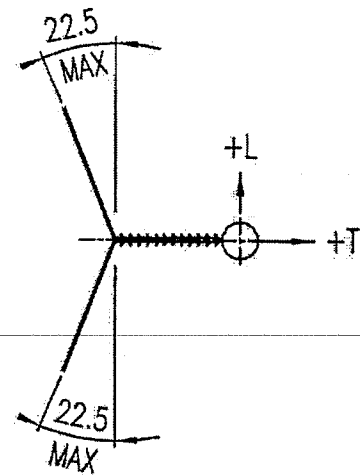
SECTION B-B
230 KV: 795 KCMIL "DRAKE"

CADD A1-R3 © STANLEY CONSULTANTS

A-FOR FABRICATION		JB	NC	MJ	7/22	 Stanley Consultants INC.	 KBM, INC. GRAND FORGE, ND	 CENTRAL POWER ELECTRIC COOPERATIVE	
REVISIONS		DWN	APVD	APVD	DATE				
DESIGNED	N. CLEMENTS		BURLEIGH WIND 230KV TRANSMISSION LINE			TANGENT 0°-15° STEEL POLE POINT LOADS SHEET 1 OF 2		SCALE: NTS	
DRAWN	J. BOWLIN							NO. 18447	REV.
CHECKED	M. JURGEMEYER							TUS 1C	A
APPROVED									
APPROVED									
DATE	07/11/05								



SECTION A-A
AC - 64/528 OPGW



SECTION B-B
230KV: 795 KCMIL "DRAKE"

© STANLEY CONSULTANTS
CADD A1-03

A-FOR FABRICATION	JB	NC	MJ	7/22
REVISIONS	DWN	APVD	APVD	DATE
DESIGNED	N. CLEMENTS			
DRAWN	J. BOWLIN			
CHECKED	M. JURGEMEYER			
APPROVED	_____			
APPROVED	_____			
DATE	07/11/05			

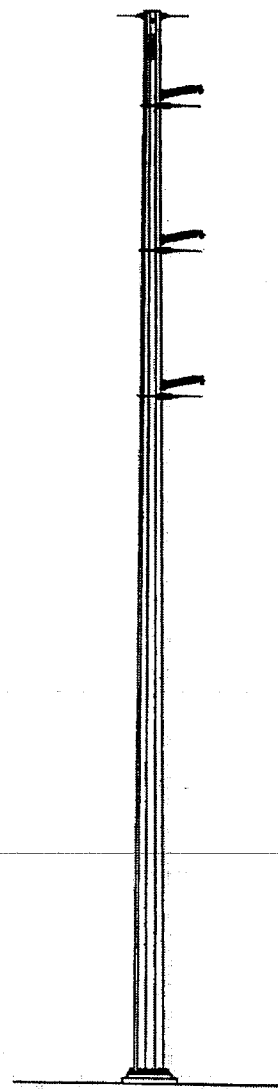
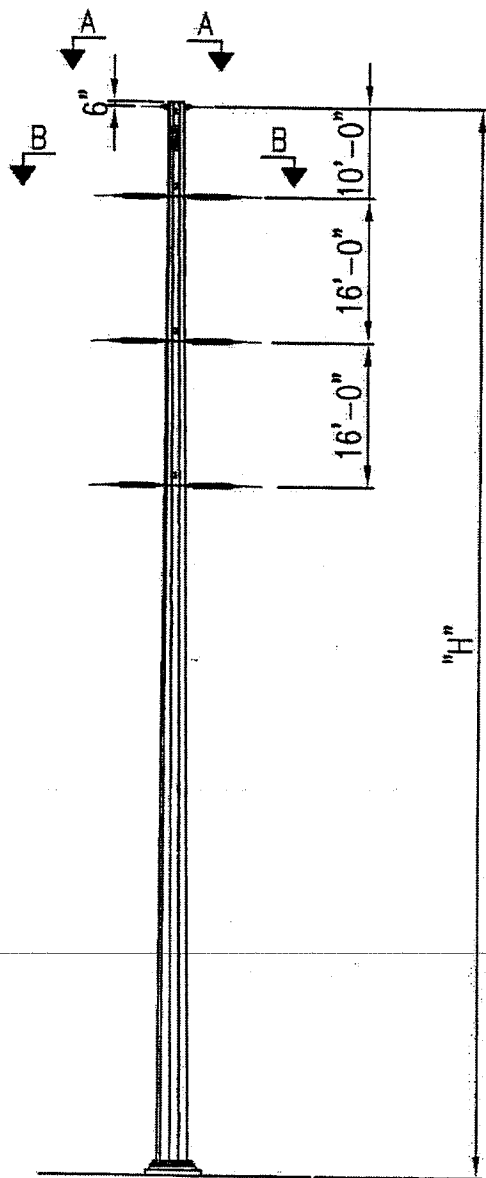



 KBM, INC.
GRAND FORGE, ND
CENTRAL POWER
ELECTRIC COOPERATIVE




BURLEIGH WIND
230KV TRANSMISSION
LINE

TANGENT 15°-45°
STEEL POLE POINT LOADS
SHEET 1 OF 2

SCALE: NTS	
NO. 18447	REV.
TUS 4	A

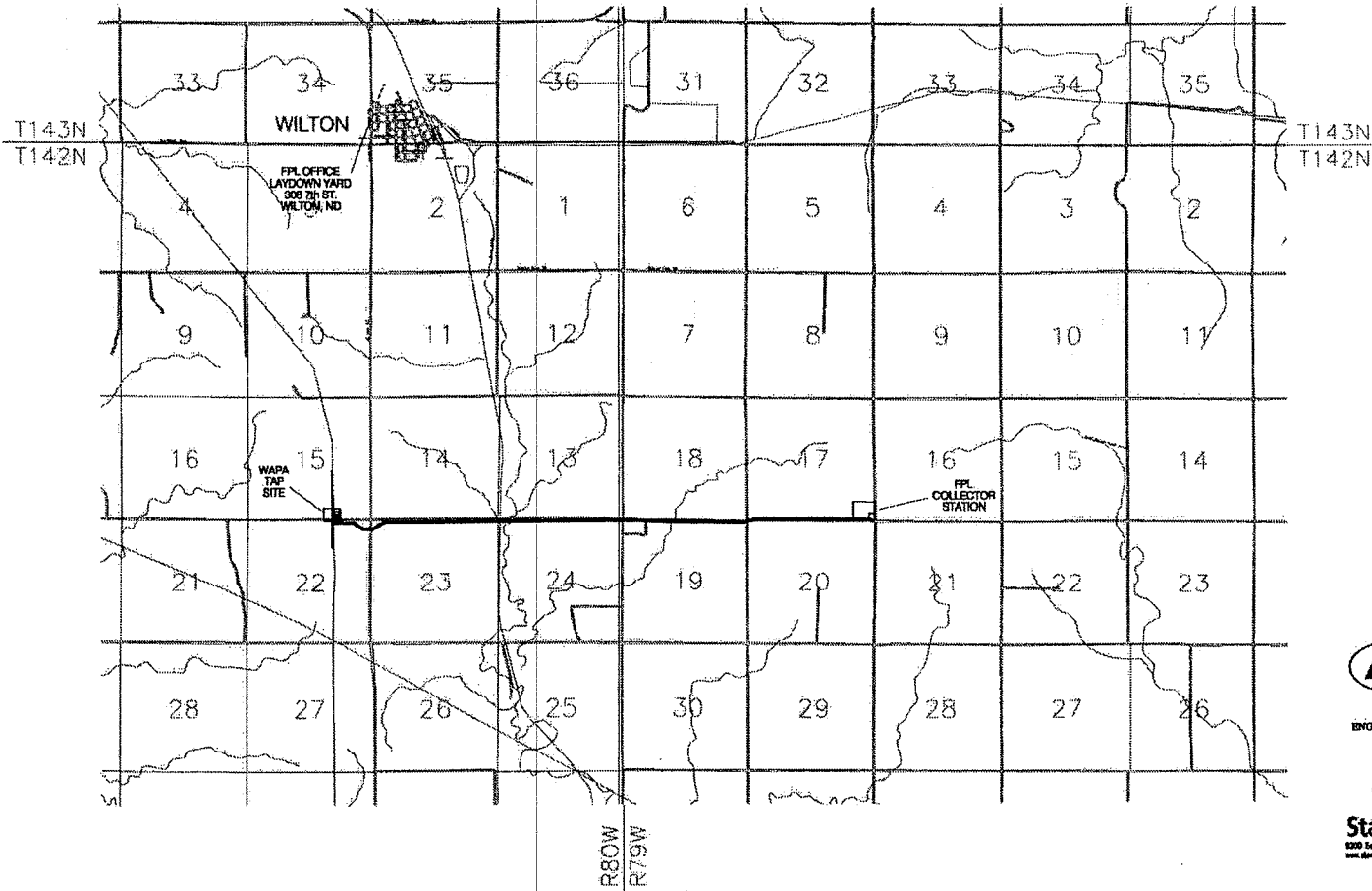


CADDD A1-R3 © STANLEY CONSULTANTS

A-FOR FABRICATION		JB	NC	MJ	7/22	 Stanley Consultants INC.	 KBM, INC. GRAND FORKS, ND	 CENTRAL POWER ELECTRIC COOPERATIVE	
REVISIONS		DWN	APVD	APVD	DATE				
DESIGNED	N. CLEMENTS		BURLEIGH WIND 230KV TRANSMISSION LINE			DEAD END 0°-90° STEEL POLE POINT LOADS SHEET 1 OF 2		SCALE: NTS	
DRAWN	J. BOWLIN							NO. 18447	REV.
CHECKED	M. JURGEMEYER								
APPROVED	_____								
APPROVED	_____								
DATE	07/11/05								



CENTRAL POWER ELECTRIC COOPERATIVE NORTH DAKOTA 42 WARD



KBM, INC.
GRAND FORKS, ND 58201

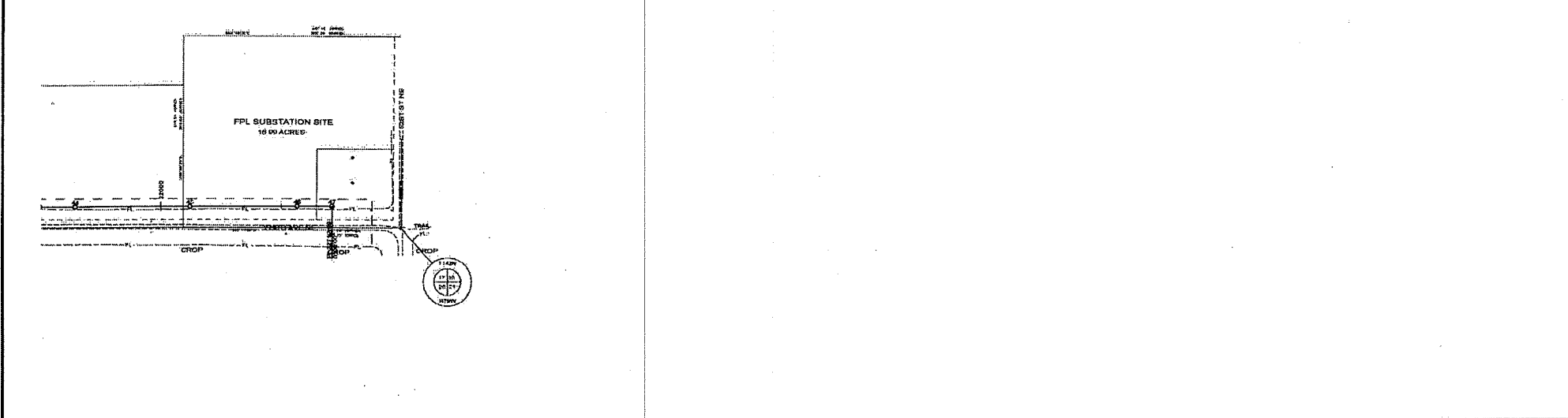
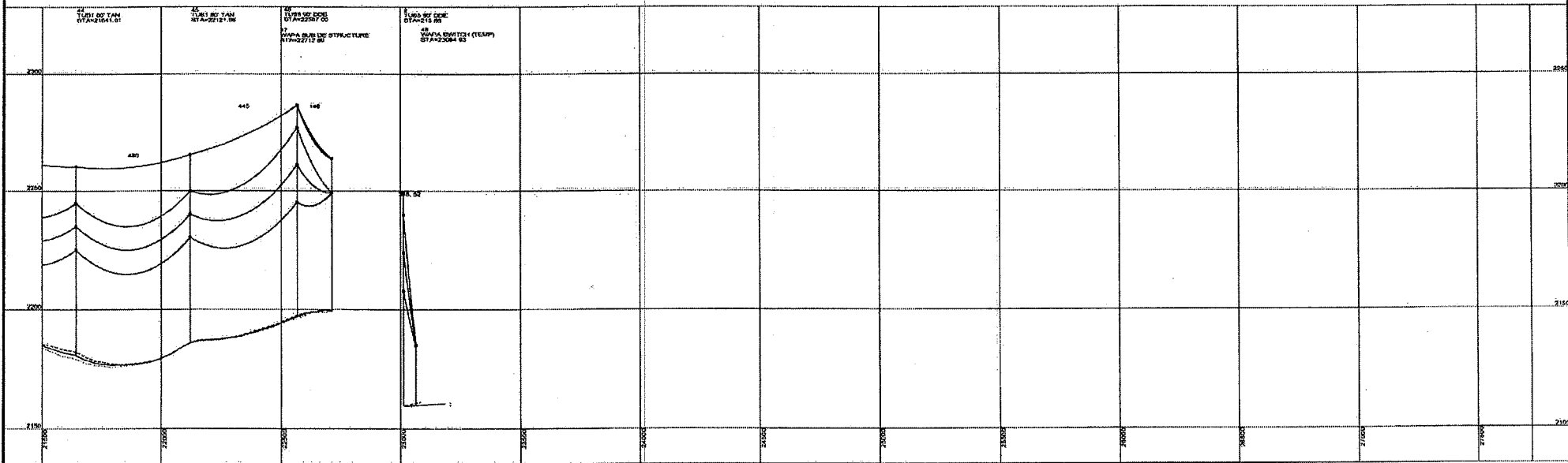
ENGINEERING • PHOTOGRAMMETRY • SURVEYING




Stanley Consultants INC.
820 East Harvard Avenue, Suite 400, Englewood, Colorado 80112-3415
www.stanleyconsultants.com

PLAN & PROFILE DRAWINGS
BURLEIGH WIND
230 KV TRANSMISSION LINE

DATE: 07-18-05



TRANSMISSION CONDUCTOR: 720 MCM ACSR 26/7 TOWER: 110 FT SPACING: 330 FT BASED ON: 100 FT WIND: 15 MPH		SHIELD CONDUCTOR: ACSR 26/7 TOWER: 110 FT SPACING: 330 FT BASED ON: 100 FT WIND: 15 MPH		LEGEND: TOWER AT 3000 FEET 100 FT 200 FT 300 FT 400 FT 500 FT 600 FT 700 FT 800 FT 900 FT 1000 FT	
PROPERTY: KBM, INC. 10000 BURLEIGH WIND BURLEIGH WIND BURLEIGH WIND BURLEIGH WIND		PROPERTY: KBM, INC. 10000 BURLEIGH WIND BURLEIGH WIND BURLEIGH WIND BURLEIGH WIND		PROPERTY: KBM, INC. 10000 BURLEIGH WIND BURLEIGH WIND BURLEIGH WIND BURLEIGH WIND	
STANLEY CONSULTANTS INC. 10000 BURLEIGH WIND BURLEIGH WIND BURLEIGH WIND BURLEIGH WIND		STANLEY CONSULTANTS INC. 10000 BURLEIGH WIND BURLEIGH WIND BURLEIGH WIND BURLEIGH WIND		STANLEY CONSULTANTS INC. 10000 BURLEIGH WIND BURLEIGH WIND BURLEIGH WIND BURLEIGH WIND	



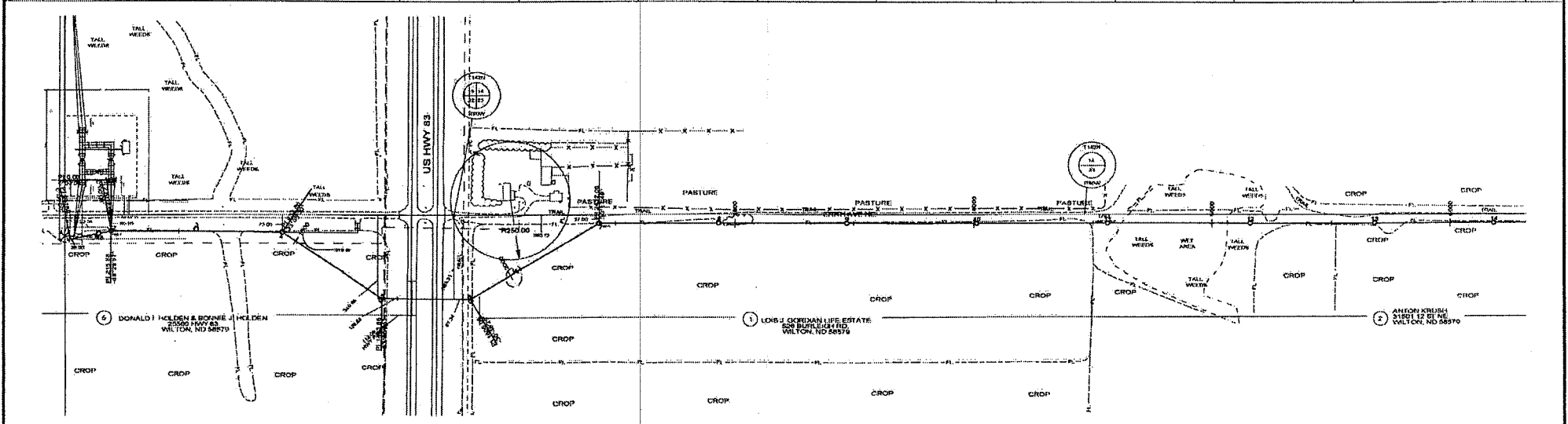
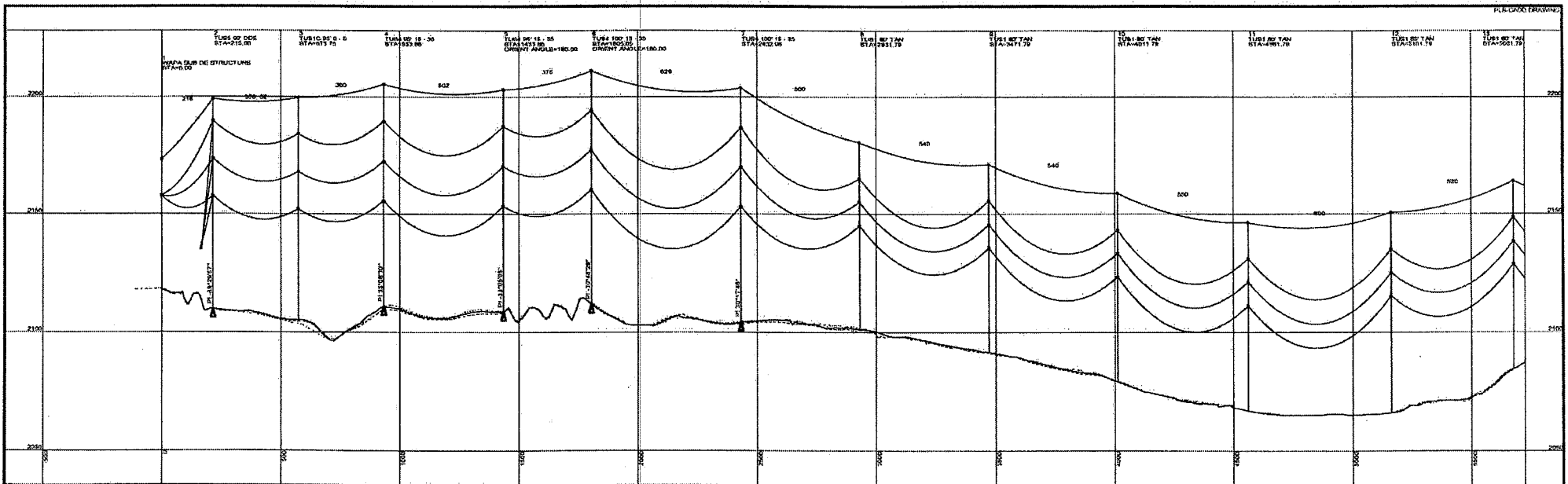
CENTRAL POWER ELECTRIC COOPERATIVE

**BURLEIGH WIND
230KV TRANSMISSION LINE**

PLAN AND PROFILE SHEET

400 FT HORIZ. SCALE
40 FT VERT. SCALE

5 OF 5 #4
D.A.M. 7/18/2005



TRANSMISSION CONSTRUCTION: 2005 DESIGN ENGINEER: J.L.Z. PLANNING ENGINEER: J.L.Z. CHECKED BY: J.L.Z. DATE: 7/18/2005		SHIELD CONSTRUCTION: 2005 DESIGN ENGINEER: J.L.Z. PLANNING ENGINEER: J.L.Z. CHECKED BY: J.L.Z. DATE: 7/18/2005		WORKING PAPER NO. 41 2005 NEAD PROJECT NUMBER: 05-001 SHEET NO.: 10 OF 10 DATE: 7/18/2005							
BURLEIGH WIND 230KV TRANSMISSION LINE				PLAN AND PROFILE SHEET				1 OF 5		#4 7/18/2005	