

DONALD A. NEGAARD
JAMES E. NOSTDAHL
CAROL K. LARSON
DAVID J. HOGUE
REED A. SODERSTROM
BRENT M. OLSON
DEBRA L. HOFFARTH
SCOTT M. KNUDSVIG
ERIKA L. SLEGER
RYAN D. SANDBERG



LAW OFFICES OF
PRINGLE & HERIGSTAD, P.C.

2525 ELK DRIVE
POST OFFICE BOX 1000
MINOT, NORTH DAKOTA 58702
(701) 852-0381
FAX (701) 857-1361
E-mail: pringle@srt.com

OF COUNSEL
HERBERT L. MESCHKE

RETIRED
THOMAS A. WENTZ
MARK F. PURDY
JAN M. SEBBY

KENNETH G. PRINGLE
(1914-1983)
ROGER O. HERIGSTAD
(1919-2003)


July 25, 2005

Illona A. Jeffcoat-Sacco
Executive Secretary
North Dakota Public Service Commission
600 East Boulevard Avenue, Department 408
Bismarck, ND 58505-0480

**Re: In the matter of FPL Energy Burleigh County Wind, LLC (Burleigh County Wind) and Central Power Electric Cooperative, Inc.'s (Central Power) Amended Application for a Waiver of Procedures and Time Schedules and Consolidated Applications for a Certificate of Corridor Compatibility and Route Permit for a 230-kV Transmission Facility in Burleigh County, North Dakota.
Case No. PU-05-205**

Enclosed for filing in the above-captioned matter are eleven copies of the missing page of the plan and profile drawings which were sent to you last week in conjunction with the amended application filed in this matter.

Please accept our apologies for this omission from the initial filing.

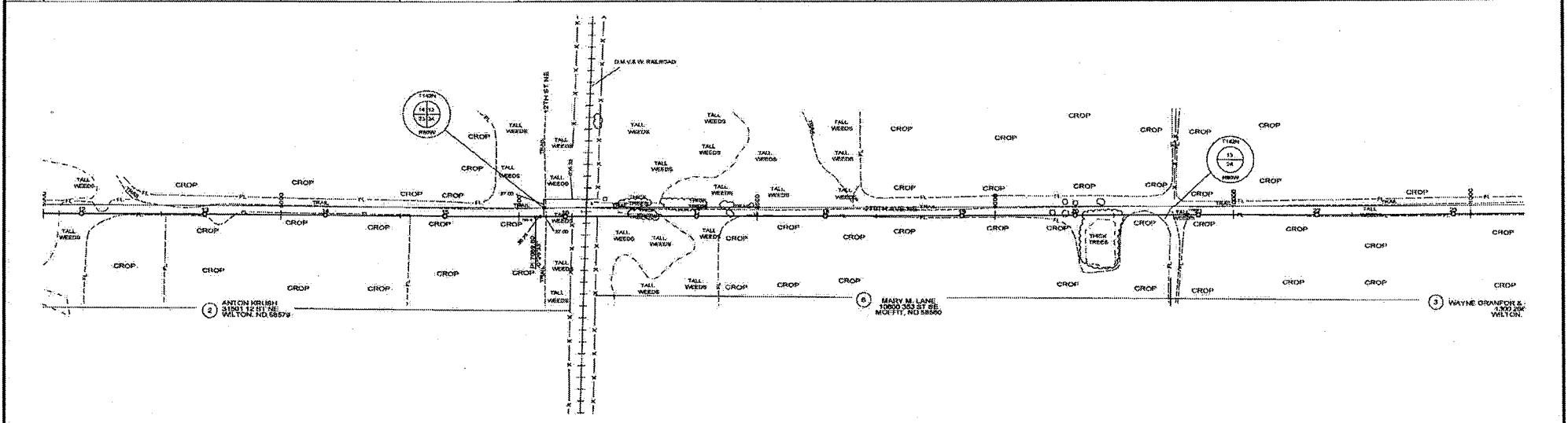
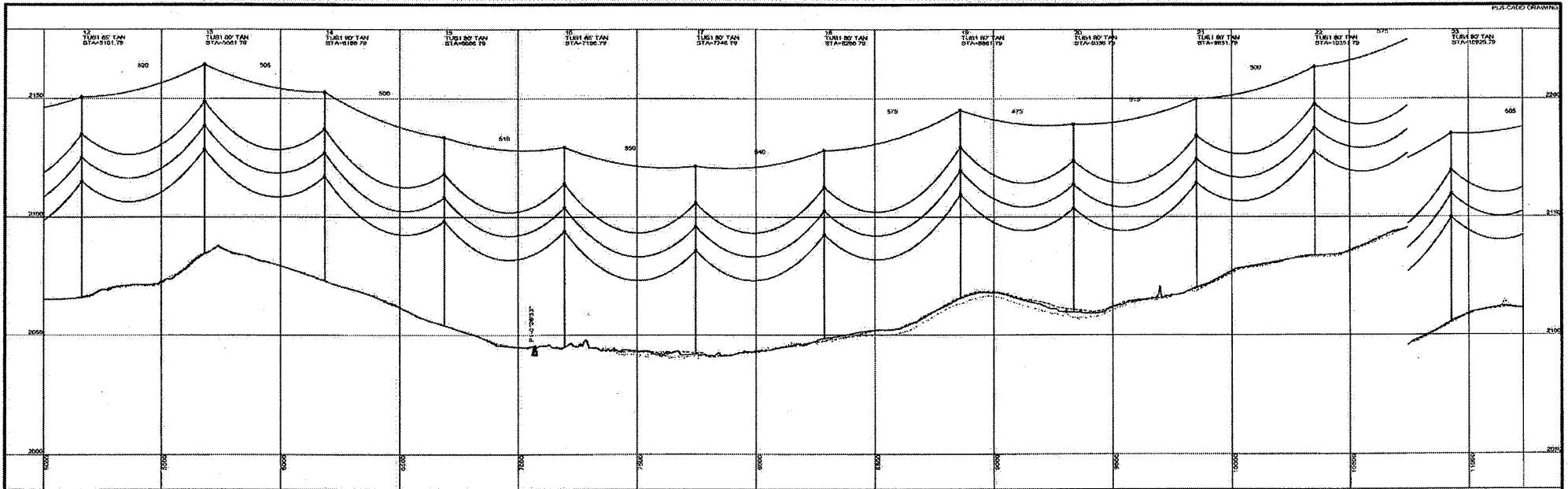


Don Negaard
Pringle & Herigstad, P.C.
Attorneys for Co-applicant,
Central Power Electric Cooperative, Inc.

jt

Enclosures

cc: Central Power Electric Cooperative, Inc., Attention Tom Meland, Manager
Brian R. Bjella, Fleck, Mather & Strutz, Ltd.



| | | | | | | | | | | | |
|---|--|---|--|---|--|---|--|---|--|------------------------|--|
| TRANSMISSION CONDUCTOR TYPE: 260-400-5000 DESIGN TENSION: 21.5 TON TRACKING: 0.5" SAGGED AT 50% ILL: 2.5" ICE: 0.5" | | SHIELD CONDUCTOR: 40 BUSH OPGW DESIGN TENSION: 2.0 TON SAGGED AT 50% ILL: 0.5" ICE: 0.5" | | DESIGN TENSION AT 2000 MISC: HEAVY LOADS: 17.5 TON AT 50% ILL: 10.0 TON AT 100% ILL: 10.0 TON 0.5" CONSTANT | | CONTROL: NORTH CROOKS BOUNDARY INTERFERING: NONE KNOWN VERT-OL: 100.00' | | CENTRAL POWER ELECTRIC COOPERATIVE BURLEIGH WIND 230KV TRANSMISSION LINE | | PLAN AND PROFILE SHEET | |
| DRAWN BY: J.L.Z. CHECKED BY: D.A.M. | | DATE: 7/18/2005 | | SHEET: 2 OF 5 | | REV: #4 | | SCALE: 400 FT. HORIZ SCALE, 40 FT. VERT SCALE | | NORTH | |