

# Burleigh County Wind, LLC; Wilton, ND

## Plan of the Day (POD)

Weather Forecast: Flurries  High: 31°F Low: 23°F  
 Winds: W 10-20 MPH Precipitation: 20%

Thursday, November 17th, 2005



45 Days to Completion

FPL Energy 10 Days to SWPP Inspection

FPL Energy Par Golf Wanzek GE Aerial Contractors Ventus

### Activities:

#### ♦ Safety/Environmental:

- ♦ Daily Safety meeting was held at Construction Trailer.
- ♦ No injuries to date.
- ♦ Bill Alfera onsite going through Wanzek documents.

#### ♦ General:

- ♦ Next Management meeting Wednesday, November 30<sup>th</sup>, 2005 at 9:00 am.

#### ♦ Foundation Construction:

- ♦ Pouring #33.
- ♦ Pour #32 tomorrow.

#### ♦ Electrical Construction:

- ♦ Erecting substation buss, pulling and terminating control wiring.
- ♦ Continuing work in substation.
- ♦ OPGW installation is on hold for parts.
- ♦ Continue setting pad mounts.
- ♦ Pad Mount Xfmr terminations continues.
- ♦ Set transformers #30 and #31, all set by Friday.

#### ♦ Tower Erection: Erection Days Lost for High Winds: 3

- ♦ Set Mid #20.
- ♦ Walking 1400 to #24.
- ♦ Will Fly if wind speeds go down.

#### ♦ Mechanical Completion:

- ♦ Working #28 and #29 terminating cables downstairs.

#### ♦ Commissioning:

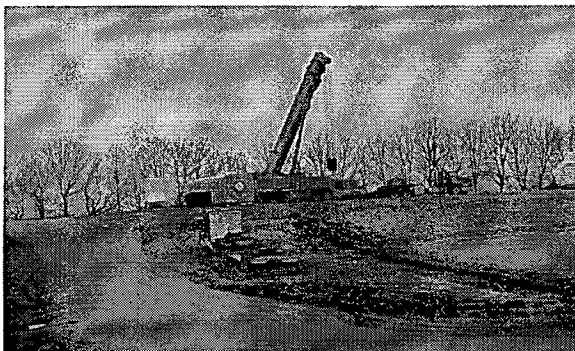
- ♦ GE lead and one tech here on Monday.

#### ♦ WAPA Interconnect:

- ♦ Interconnect installation continues.

RECEIVING			
	Yesterday	Total Received	Remaining
Bases	1	10	23
Mids	1	10	23
Tops	1	11	22
Nacelles	1	24	9
Controllers	0	33	0
Blades	2	15	18
Transformers	0	33	0
Hubs	0	29	4
4/0 Cable	0	147,874	0
1000 MCM	0	2,415	0

## General Information & Announcements



	Complete	Remaining	% complete
Roads Built	37,154	0	100.0%
Foundations completed & backfilled	31	2	93.9%
Tower Base sections installed	10	23	30.3%
Tower Mid sections installed	10	23	30.3%
Tower top sections installed	5	28	15.2%
Nacelles Installed	5	28	15.2%
Rotors installed	5	28	15.2%
Mechanically completed	0	33	0.0%
Pre-Commissioned	0	33	0.0%
Final Commissioned	0	33	0.0%
Trenching for 4/0 cable (ft)	49,291	0	100.0%
Trenching for 1000MCM cable (ft)	500	0	100.0%
Transformers Set/Terminated	13	20	39.4%

Plan of the Day contents shall not be forwarded or distributed without prior written consent of FPLE.