




Burleigh County Wind, LLC; Wilton, ND

Plan of the Day (POD)

Weather Forecast: Mostly Cloudy  **High:** 44°F

Precipitation: 10% **Low:** 29°F

Winds: W 5-10 MPH

Thursday, December 22nd, 2005



20 Days to Completion
13 Days to SWPP Inspection

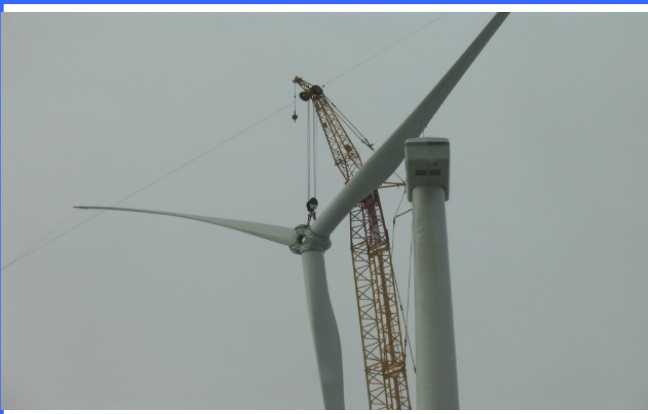
FPL Energy Par Golf Wanzek GE Aerial Contractors Ventus

Activities:

- ♦ **Safety/Environmental:**
 - ♦ Daily Safety meeting was held at Construction Trailer.
 - ♦ No injuries to date.
- ♦ **Electrical Construction:**
 - ♦ Working punch list items.
- ♦ **Tower Erection: Erection Days Lost for High Winds: 16**
 - ♦ Top out #16.
 - ♦ High winds today will prevent turbine top-off.
 - ♦ Building final rotor today.
- ♦ **Mechanical Completion:**
 - ♦ Working cable drops #2 and #3.
 - ♦ Cleaning #7 and #8.
 - ♦ Terminations #4 and #5.
- ♦ **Commissioning:**
 - ♦ Start #9.

<i>RECEIVING</i>			
	Yesterday	Total Received	Remaining
Bases	0	33	0
Mids	0	33	0
Tops	0	33	0
Nacelles	0	33	0
Controllers	0	33	0
Blades	0	33	0
Transformers	0	33	0
Hubs	0	33	0
4/0 Cable	0	147,874	0
1000 MCM	0	2,415	0

General Information & Announcements



	Complete	Remaining	% complete
Roads Built	37,154	0	100.0%
Foundations completed & backfilled	33	0	100.0%
Tower Base sections installed	29	4	87.9%
Tower Mid sections installed	29	4	87.9%
Tower top sections installed	23	10	69.7%
Nacelles Installed	23	10	69.7%
Rotors installed	22	11	66.7%
Mechanically completed	13	20	39.4%
Final Commissioned	12	21	36.4%
Trenching for 4/0 cable (ft)	49,291	0	100.0%
Trenching for 1000MCM cable (ft)	500	0	100.0%
Transformers Set/Terminated	33	0	100.0%

Plan of the Day contents shall not be forwarded or distributed without prior written consent of FPLe.