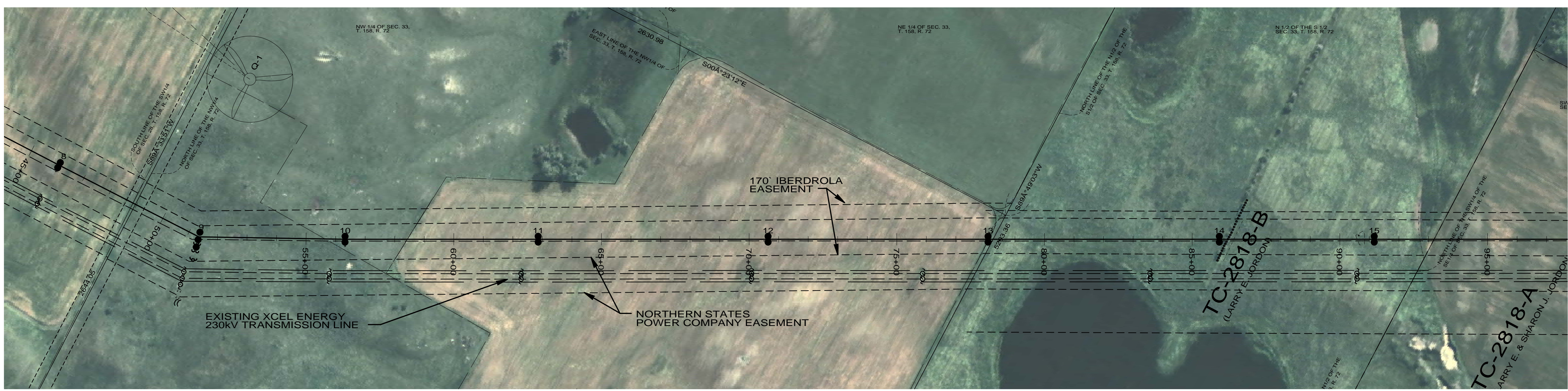
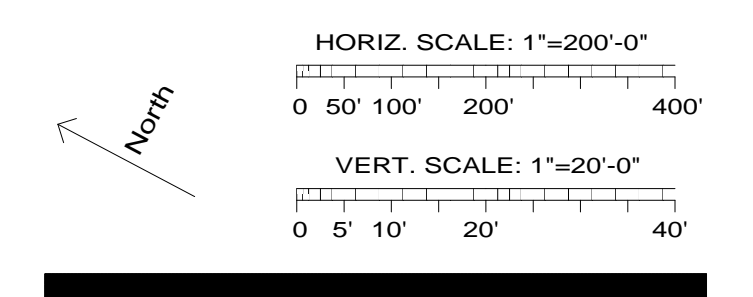


Rev	Date	By
0 - REVISED SINCE BID	03-04-09	SPT
1 - STR #82 & 83 MOVE	05-15-09	SPT
2 - RECORD DRAWING	04-16-10	



8  
 sta=46+05.18  
 2-75/2  
 HF-TAN  
 GND DETAILS  
 EMBED  
 TM-16

9  
 sta=51+36.76  
 2-70/2, 1-65/2  
 3P-ANG  
 GND DETAILS  
 EMBED  
 TM-16  
 DAMPER  
 (7) GUYING A, B  
 (1) GUYING C  
 (3) GUYING D

10  
 sta=56+31.92  
 2-90/2  
 HF-TAN  
 GND DETAILS  
 EMBED  
 TM-16

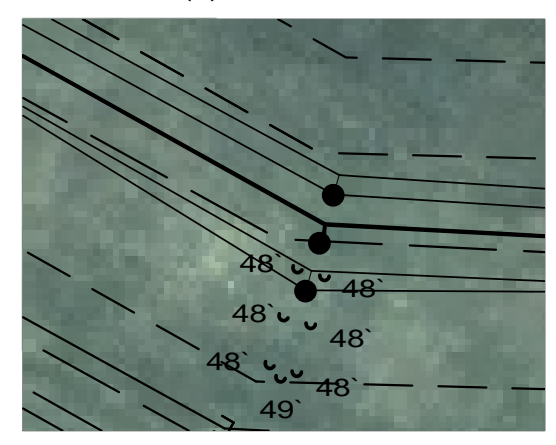
11  
 sta=62+85.77  
 2-90/2  
 HF-TAN  
 GND DETAILS  
 EMBED  
 TM-16

12  
 sta=70+64.27  
 2-85/2  
 HF-TAN  
 GND DETAILS  
 EMBED  
 TM-16

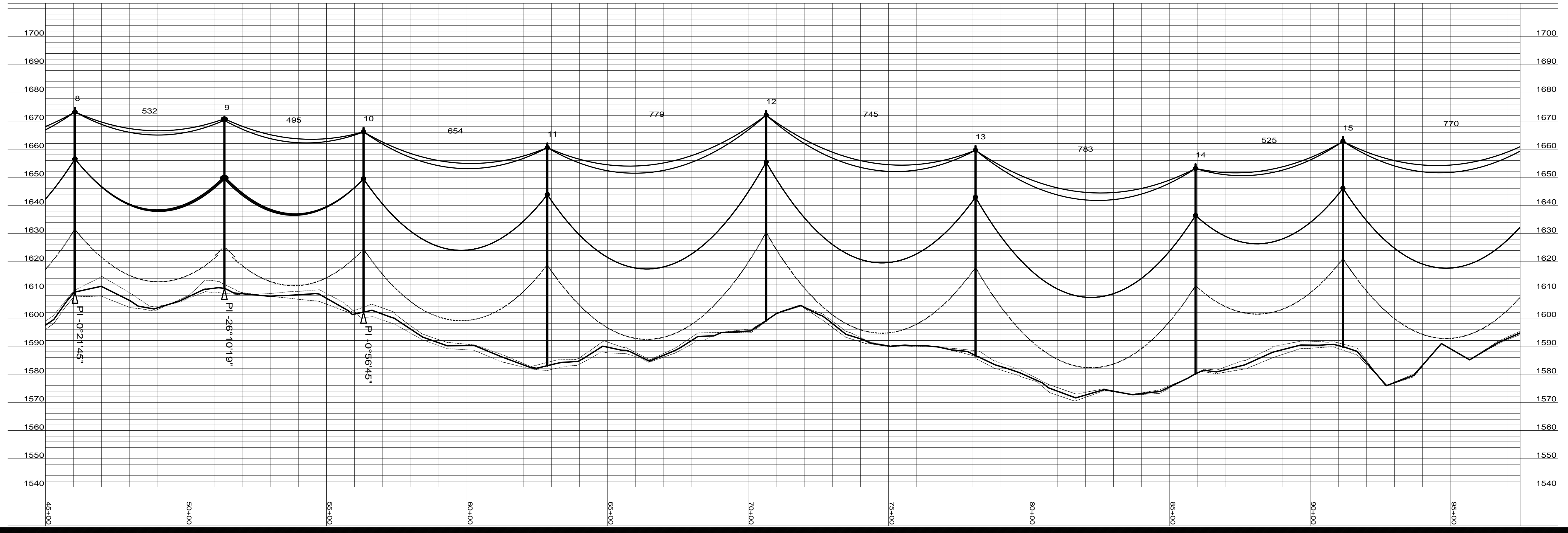
13  
 sta=78+09.10  
 2-85/2  
 HF-TAN  
 GND DETAILS  
 EMBED  
 TM-16

14  
 sta=85+92.05  
 2-85/2  
 HF-TAN  
 GND DETAILS  
 EMBED  
 TM-16

15  
 sta=91+16.57  
 2-85/2  
 HF-TAN  
 GND DETAILS  
 EMBED  
 TM-16



GUY DETAIL STR 9



Bismarck-Denver-Detroit Lakes-Fargo-Minneapolis-Sioux Falls  
 5201 East River Road, Suite 308  
 Minneapolis, Minnesota 55421  
 Phone: 763.571.2500 Fax: 763.571.1168  
 Web: www.ulteig.com  
 Drawn By: NGK  
 Checked By: MPM  
 Approved By: SPT

**RUGBY 230kV  
 TRANSMISSION LINE  
 PLAN AND PROFILE**

Project Number: 108\_0495  
 Date Created: December 3, 2008  
 Dwg No: **RUG-E-515-02**