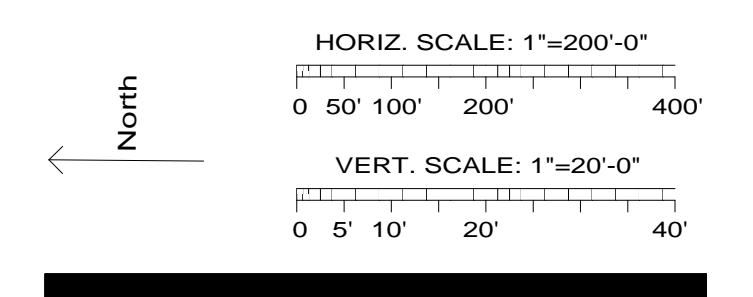
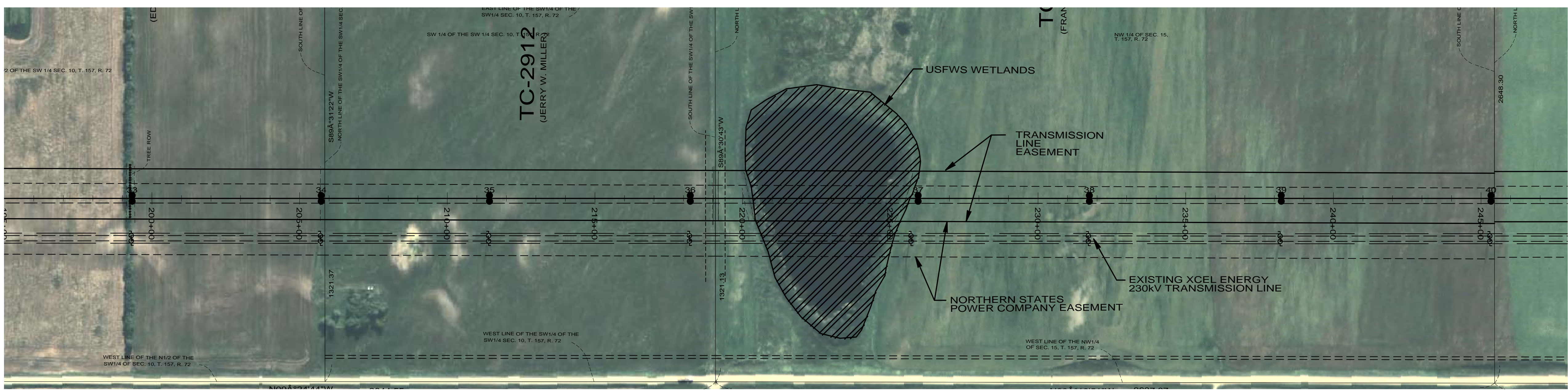
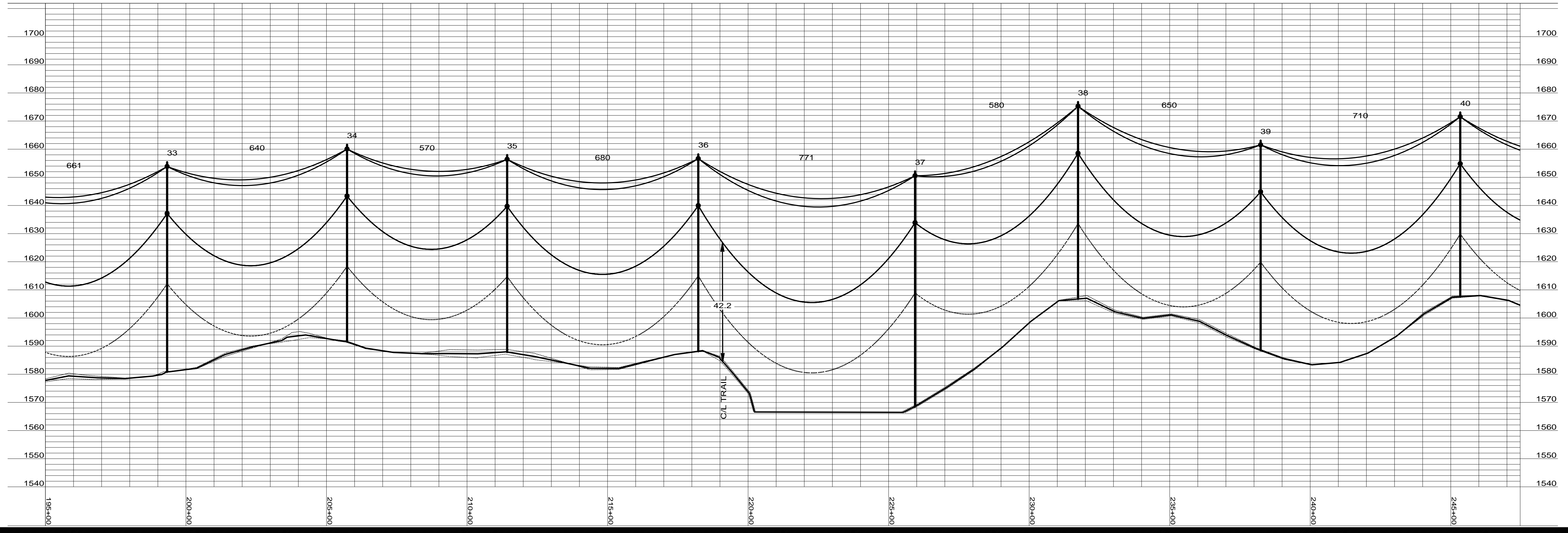


Rev	Date	By
0 - REVISED SINCE BID	03-04-09	SPT
1 - STR #82 & 83 MOVE	05-15-09	SPT
2 - RECORD DRAWING	04-16-10	



33 Sta=199+33.12 2-85/2 HF-TAN GND DETAILS EMBED TM-16	34 Sta=205+73.19 2-80/2 HF-TAN GND DETAILS EMBED TM-16	35 Sta=211+42.85 2-80/2 HF-TAN GND DETAILS EMBED TM-16	36 Sta=218+22.81 2-80/2 HF-TAN GND DETAILS EMBED TM-16	37 Sta=225+94.16 2-95/2 HF-TAN GND DETAILS EMBED, (2)CULVERTS TM-16	38 Sta=231+74.01 2-80/2 HF-TAN GND DETAILS EMBED TM-16	39 Sta=238+23.65 2-85/2 HF-TAN GND DETAILS EMBED TM-16	40 Sta=245+33.78 2-75/2 HF-TAN GND DETAILS EMBED TM-16
--	--	--	--	---	--	--	--



Bismarck-Denver-Detroit Lakes-Fargo-Minneapolis-Sioux Falls  
5201 East River Road, Suite 308  
Minneapolis, Minnesota 55421  
Phone: 763.571.2500 Fax: 763.571.1168  
Web: www.ulteig.com  
Drawn By: NGK  
Checked By: MPM  
Approved By: SPT

**RUGBY 230kV  
TRANSMISSION LINE  
PLAN AND PROFILE**

Project Number: 108\_0495  
Date Created: December 3, 2008  
Dwg No: **RUG-E-515-05**