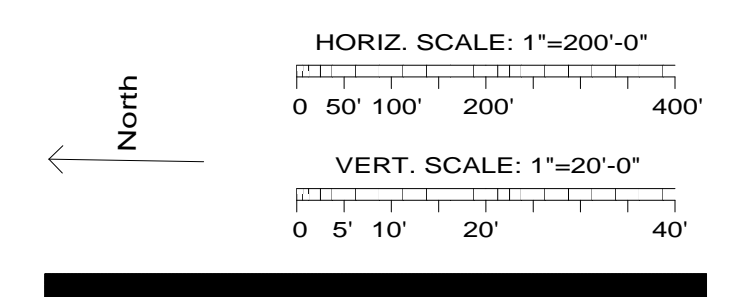
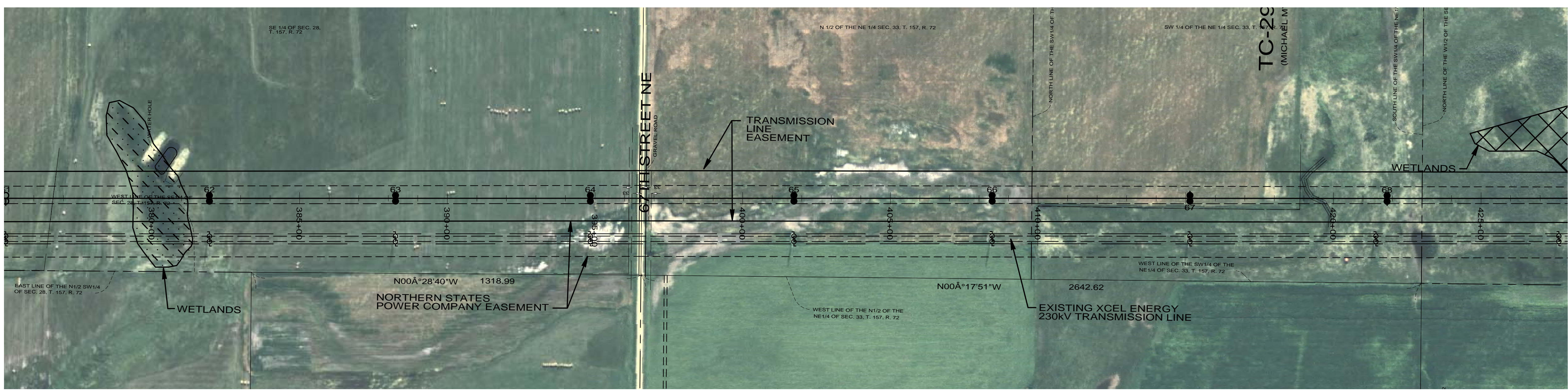
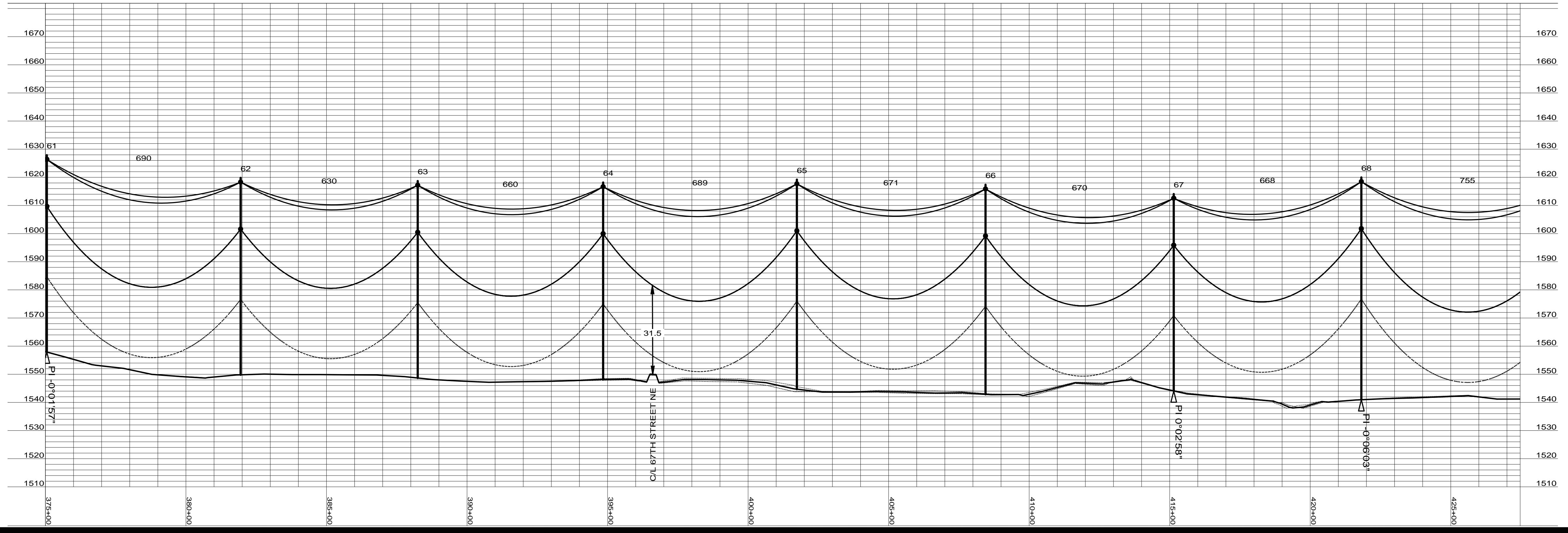


Rev	Date	By
0 - REVISED SINCE BID	03-04-09	SPT
1 - STR #82 & 83 MOVE	05-15-09	SPT
2 - RECORD DRAWING	04-16-10	



61 Sta=375+04.98 2-80/2 HF-TAN GND DETAILS EMBED TM-16	62 Sta=381+94.61 2-80/2 HF-TAN GND DETAILS EMBED TM-16	63 Sta=388+24.71 2-80/2 HF-TAN GND DETAILS EMBED TM-16	64 Sta=394+84.35 2-80/2 HF-TAN GND DETAILS EMBED TM-16	65 Sta=401+73.64 2-85/2 HF-TAN GND DETAILS EMBED TM-16	66 Sta=408+44.75 2-85/2 HF-TAN GND DETAILS EMBED TM-16	67 Sta=415+14.37 2-80/2 HF-TAN GND DETAILS EMBED TM-16	68 Sta=421+81.87 2-90/2 HF-TAN GND DETAILS EMBED, (2) CULVERTS TM-16
--	--	--	--	--	--	--	--



Bismarck-Denver-Detroit Lakes-Fargo-Minneapolis-Sioux Falls
 5201 East River Road, Suite 308
 Minneapolis, Minnesota 55421
 Phone: 763.571.2500 Fax: 763.571.1168
 Web: www.ulteig.com
 Drawn By: NGK
 Checked By: MPM
 Approved By: SPT

**RUGBY 230kV
 TRANSMISSION LINE
 PLAN AND PROFILE**

Project Number: 108.0495
 Date Created: December 3, 2008
 Dwg No: **RUG-E-515-09**