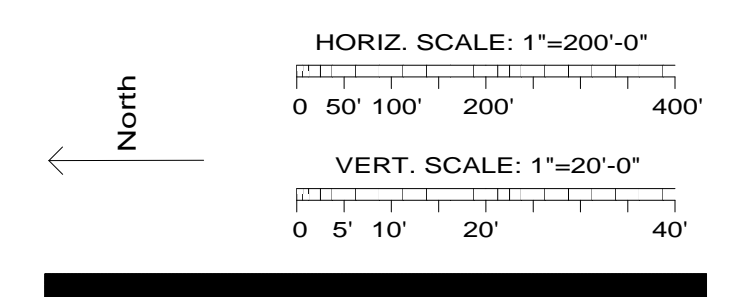
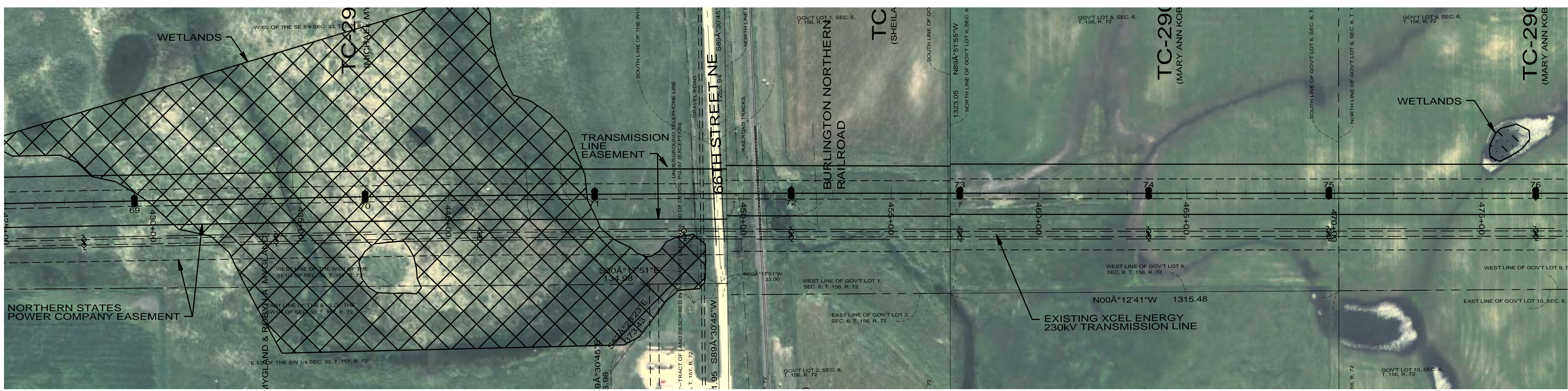


Rev	Date	By
0 - REVISED SINCE BID	03-04-09	SPT
1 - STR #82 & 83 MOVE	05-15-09	SPT
2 - RECORD DRAWING	04-16-10	



69 Sta=429+37.18 2-90/2 HF-TAN GND DETAILS EMBED, (2)CULVERTS TM-16	70 Sta=437+18.12 2-90/2 HF-TAN GND DETAILS EMBED TM-16 INSTALL (2) CULVERTS	71 Sta=444+95.24 2-90/2 HF-TAN GND DETAILS EMBED, (2)CULVERTS TM-16	72 Sta=451+60.64 2-90/2 HF-TAN GND DETAILS EMBED, (2)CULVERTS TM-16	73 Sta=457+31.64 2-95/2 HF-TAN GND DETAILS EMBED, (2)CULVERTS TM-16	74 Sta=463+71.04 2-85/2 HF-TAN GND DETAILS EMBED, (2)CULVERTS TM-16	75 Sta=469+81.22 2-80/2 HF-TAN GND DETAILS EMBED TM-16	76 Sta=476+81.58 2-80/2 HF-TAN GND DETAILS EMBED TM-16
---	--	---	---	---	---	--	--



Bismarck-Denver-Detroit Lakes-Fargo-Minneapolis-Sioux Falls
 5201 East River Road, Suite 308
 Minneapolis, Minnesota 55421
 Phone: 763.571.2500 Fax: 763.571.1168
 Web: www.ultieg.com
 Drawn By: NGK
 Checked By: MPM
 Approved By: SPT

**RUGBY 230kV
 TRANSMISSION LINE
 PLAN AND PROFILE**

Project Number: 108_0495
 Date Created: December 3, 2008
 Dwg No: **RUG-E-515-010**