

# OLIVER COUNTY WIND PROJECT

## OLIVER COUNTY WEATHER

Forecast: Sunny

Hi: 85° Low: 50° Wind: 5-10mph S

Wanzek

Ventus

Minnkota

FPL Energy

Siemens

### Oliver County Wind POD For September 5, 2006

**Safety/Environmental:**

- Daily safety meeting topics: Crane Safety, Overhead Power Lines, Exclusion Zones, PPE, School Buses & Fire Ban.

**Road Construction:**

- Compacting subgrade T17-T16.
- Laying fabric & placing gravel T20-T19.
- Subgrade approved T19-T17.

**Foundation Construction:**

- Excavating T-9.
- Continue placing engineered fill at T-10.
- Placing bolt cage & base rebar T3, & pedestal rebar at T8.
- Pouring base at T11 & pedestal at T8.
- Completed pouring base at T8 & pedestal at T7.

**Collection System Construction:**

- Continue placing turbine foundation grounding & conduits behind foundation crew.
- Finish home runs to substation.

**T-Line Construction:**

- Should finish setting poles today.

**Substation Construction:**

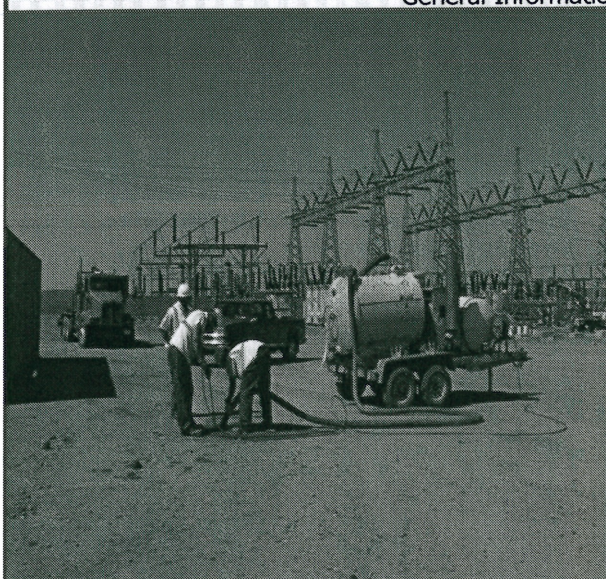
- Continue construction in Oliver county, transformer expected today.
- Continue construction in Square Butte.

**O&M Building:**

- No activity.

	Received to Date		
	Received	Remaining	% complete
Bases	0	22	0.0%
Mids	0	22	0.0%
Tops	0	22	0.0%
Nacelles	0	22	0.0%
Power Units	0	22	0.0%
Blade	0	22	0.0%
Hubs	0	22	0.0%
Transformers	2	20	9.1%
4/0 Cable	85,472	17,028	83.4%
1000 MCM	102,500	41,494	71.2%
12 Fibers Single Mode	8,240	17,028	32.6%
12 Fibers Multi Mode	28,998	-1,998	107.4%
24 Fibers Single Mode	9,459	-1,559	119.7%

### General Information & Announcements



Description	Completed to Date		
	Complete	Remaining	% complete
Road Subgrade (LF)	31,878	-378	101.2%
Roads Graveled	23,322	8,178	74.0%
Crane Pads Built	0	22	0.0%
Foundations Excavated/Mud Mats Installed	13	9	59.1%
Base Rebar Installed (Each)	7	15	31.8%
Pedestal Rebar Installed (Each)	6	16	27.3%
Foundations Completed and Backfilled	0	22	0.0%
Tower Base Sections Installed	0	22	0.0%
Tower Mid Sections Installed	0	22	0.0%
Tower Top Sections Installed	0	22	0.0%
Nacelles Installed	0	22	0.0%
Rotors Installed	0	22	0.0%
Mechanically Completed	0	22	0.0%
Pre-Commissioned	0	22	0.0%
Final Commissioned	0	22	0.0%
Poles Set	111	11	91.0%
Overhead Installation (ft)	0	187,635	0.0%
Plowing for 4/0 cable (ft)	63,714	15,276	80.7%
Plowing for 1000 MCM cable (ft)	78,200	24,800	75.9%
Transformer Set/ Terminated	0	22	0.0%

Note: Estimated quantities are highlighted in yellow.

Plan of the Day contents are not for forwarding or distribution without prior written consent of Wanzek.