

OLIVER COUNTY WIND PROJECT

OLIVER COUNTY WEATHER
Forecast: Mostly Sunny to Partly Cloudy
Hi: 85° Low: 52° Wind: 10-15mph N

Wanzek	Ventus	Minnkota	FPL Energy	Siemens
--------	--------	----------	------------	---------

Oliver County Wind POD For September 7, 2006

Safety/Environmental:

- Daily safety meeting topics: Incident Reporting, Housekeeping, Visiting Truck Drivers, Traffic, & PPE.

Road Construction:

- Laying fabric & placing gravel T20-T18.

Foundation Construction:

- Excavating T-21 & T-20 later today.
- Placing engineered fill at T-9.
- Placing base rebar T12, mat rebar T14 & pedestal rebar at T3.
- Pouring base at T3 & T12.
- Completed pouring; pedestals at T8 , T11 & mud mat at T10.

Collection System Construction:

- Continue placing turbine foundation grounding & conduits behind foundation crew.
- 2200' left to substation, waiting for a fiber delivery to finish last run.
- Plowing & laying cable T16-T22.

T-Line Construction:

- Setting last 4 poles.

Substation Construction:

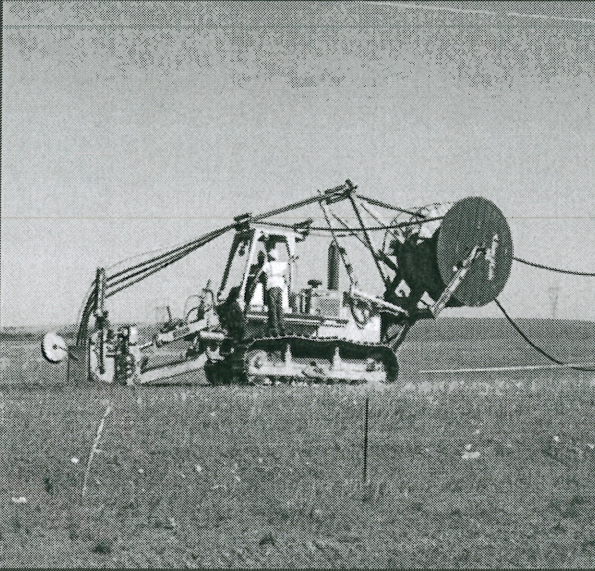
- Prep for receiving Powell Building 9/11/2006.
- Continue construction in Oliver county.
- Continue construction in Square Butte.

O&M Building:

- Completed slab pour.

	Received to Date		
	Received	Remaining	% complete
Bases	0	22	0.0%
Mids	0	22	0.0%
Tops	0	22	0.0%
Nacelles	0	22	0.0%
Power Units	0	22	0.0%
Blade	0	22	0.0%
Hubs	0	22	0.0%
Transformers	3	19	13.6%
4/0 Cable	85,200	6,600	92.8%
1000 MCM	100,272	7,874	92.7%
12 Fibers Single Mode	8,240	-4,090	198.6%
12 Fibers Multi Mode	28,998	-1,998	107.4%
24 Fibers Single Mode	9,459	-1,559	119.7%

General Information & Announcements



Description	Completed to Date		
	Complete	Remaining	% complete
Road Subgrade (LF)	32,965	-1,465	104.7%
Roads Graveled	24,302	7,198	77.1%
Crane Pads Built	0	22	0.0%
Foundations Excavated/Mud Mats Installed	14	8	63.6%
Base Rebar Installed (Each)	9	13	40.9%
Pedestal Rebar Installed (Each)	8	14	36.4%
Foundations Poured	8	14	36.4%
Tower Base Sections Installed	0	22	0.0%
Tower Mid Sections Installed	0	22	0.0%
Tower Top Sections Installed	0	22	0.0%
Nacelles Installed	0	22	0.0%
Rotors Installed	0	22	0.0%
Mechanically Completed	0	22	0.0%
Pre-Commissioned	0	22	0.0%
Final Commissioned	0	22	0.0%
Poles Set	118	4	96.7%
Overhead Installation (ft)	0	187,635	0.0%
Plowing for 4/0 cable (ft)	63,468	15,522	80.3%
Plowing for 1000 MCM cable (ft)	89,034	13,966	86.4%
Transformer Set/ Terminated	0	22	0.0%

Plan of the Day contents are not for forwarding or distribution without prior written consent of Wanzek.