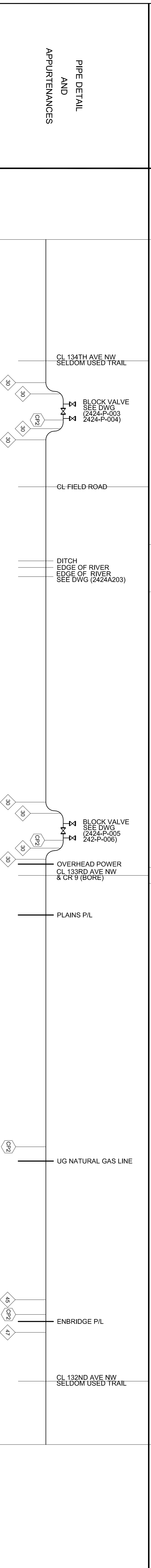


PIPELINE STATIONING	PIPELINE STATIONING	PIPELINE STATIONING
STA. 1617+39	PI 3" LT	
STA. 1617+12	PI 3" RT	
STA. 1615+70	PI 3" RT	
STA. 1614+37	PI 3" RT	
STA. 1613+32	PI 2" RT	
STA. 1611+93	PI 3" RT	
STA. 1604+33	PI 29" RT	
STA. 1604+09	PI 29" RT	
STA. 1598+23	PI 28" LT	
STA. 1595+90	PI 28" LT	
STA. 1595+35	PI 28" LT	
STA. 1594+78	PI 28" LT	
STA. 1591+58	PI 40" LT	
STA. 1587+52	PI 39" RT	
STA. 1578+07	PI 9" LT	
STA. 1575+60	PI 8" RT	
STA. 1567+96	PI 0" RT	
STA. 1566+98	PI 2" LT	
STA. 1565+87	PI 2" RT	
STA. 1564+51	PI 2" RT	
STA. 1563+81	PI 3" RT	
STA. 1563+08	PI 3" RT	
STA. 1562+54	PI 3" RT	
STA. 1561+41	PI 3" LT	
STA. 1558+41	PI 3" LT	
STA. 1544+88	PI 24" RT	
STA. 1531+62	PI 25" LT	
STA. 1531+59	PI 25" LT	
STA. 1529+38	PI 25" LT	
STA. 1522+22	PI 21" LT	
STA. 1519+43	PI 7" LT	
STA. 1514+99	PI 45" LT	
STA. 1514+61	PI 47" RT	
STA. 1514+42	PI 47" RT	
STA. 1514+21	PI 47" RT	
STA. 1508+27	PI 26" RT	
STA. 1506+98	PI 26" RT	



ITEM	DESCRIPTION	QUANTITY	NO.	REVISION	DATE
PIPE A	10.75" X 2.19 WT. API 5L X 52 W/FBE	11,746'			
PIPE B	10.75" X 2.07 WT. API 5L X 52 W/FBE W/ARO	187'			
PIPE C	10.75" X 3.66 WT. API 5L X 52 W/FBE W/ARO	566'			
HB	48" HOT BEND	1			
HB	48" HOT BEND	1			
CF2	CF TEST LEAD	4			

**SUMMARY**

**GENERAL NOTES**

1. PIPELINE MINIMUM DEPTH OF COVER IS 4' CROSSING COUNTY AND TOWNSHIP ROADS MINIMUM DEPTH OF COVER IS:

2. MINIMUM HYDROSTATIC TEST PRESSURE IS 1900 PSIG.

**LEGEND**

- PI - EXISTING PIPELINE (UNDERGROUND)
- CPM - EXISTING PIPELINE (UNDERGROUND)
- G - EXISTING NATURAL GAS PIPELINE (UNDERGROUND)
- T - EXISTING TELEPHONE
- E10 - EXISTING ELECTRICAL (OVERHEAD)
- E - EXISTING ELECTRICAL (UNDERGROUND)
- FO - EXISTING FIBER OPTICS
- X - EXISTING FENCE

**REVISION**

NO.	REVISION	DATE
1	AS CONSTRUCTED	1/29/08

**Rooney Engineering, Inc.**  
12201 E. Arapahoe Rd.  
Centennial, CO 80112  
(303) 792-5911

**ENBRIDGE PIPELINES (ND)**  
AS CONSTRUCTED ALIGNMENT SHEET  
TRENTON TO BEAVER LODGE  
NORTH DAKOTA

WILLIAMS  
SCALE: DRAWN: DATE: DRAWING NO: 2424M0113

- EA ELECTRICAL CROSSING
- UA UNIMPROVED ROAD CROSSING (SEE STD-003.1)
- GA GRAVEL ROAD CROSSING (SEE STD-003)
- IA IMPROVED ASPHALT ROAD CROSSING (SEE STD-003.2)
- HA HIGHWAY CROSSING (SEE STD-003.2)
- RA RAILROAD CROSSING (SEE DWG 2424M001)
- PC PIPELINE CROSSING
- CA CABLE CROSSING
- WA WATER CROSSING
- MA AERIAL MARKER
- BV BLOCK VALVE
- CP1 CP TEST LEAD (FOREIGN) (SEE DWG 2424M001)
- CP2 CP TEST LEAD (SEE DWG 2424M001)
- 48 HOT BEND