

Enbridge Pipelines (North Dakota) LLC
119 N. 25th Street East
Superior, WI 54880
Tel 715 394 1400
Fax 715 394 1570
www.enbridgepartners.com



October 23, 2009

RECEIVED

OCT 27 2009

Mr. Darrell Nitscheke
Executive Director, Public Utilities Division
North Dakota Public Service Commission
600 E. Boulevard Ave., Dept. 408
Bismarck, ND 58505-0480

PUBLIC SERVICE COMMISSION

Re: Enbridge Pipelines (North Dakota) LLC
Trenton to Beaver Lodge Pipeline (PU-06-330)

Dear Mr. Nitscheke:

The purpose of this letter is to submit the first year monitoring results of the tree and shrub planting effort that was conducted in spring 2009 for the above referenced case. As stated in Condition 19 of the PSC's Order "...Enbridge shall inspect tree replacements once a year for three years, on the anniversary of the plantings, and send a report on or shortly before October 1 of each year to the Commission documenting work completion and condition of woodlands planting. The Commission may order additional plantings if survival rates are less than 75%."

For your reference, 10,624 trees and shrubs were removed during the Trenton to Beaver Lodge Pipeline Project. The Williams County Soil Conservation District (WCSCD) planted 21,918 trees and shrubs in spring 2009 according to a planting plan approved by the North Dakota State Forester and the PSC. The WCSCD monitored the planting site in fall 2009. Approximately 90 percent of the plantings survived the first growing season and appear to be thriving. Photographs of the plantings are attached. Enbridge does not propose any corrective actions at this time. The WCSCD will continue to monitor and report on the plantings in 2010.

If you have questions or require further information, please contact Jeff Mackenthun of Merjent, Inc., Enbridge's environmental consultant, at (612) 746-3668, or me at (715) 394-1572. Thank you for your continued assistance on this project.

Sincerely,
Enbridge Pipelines (North Dakota) LLC

A handwritten signature in cursive script that reads "Kris Benson".

Kris Benson
Environmental Analyst II, CHMM

cc: Jeff Mackenthun, Merjent, Inc.

Attachment

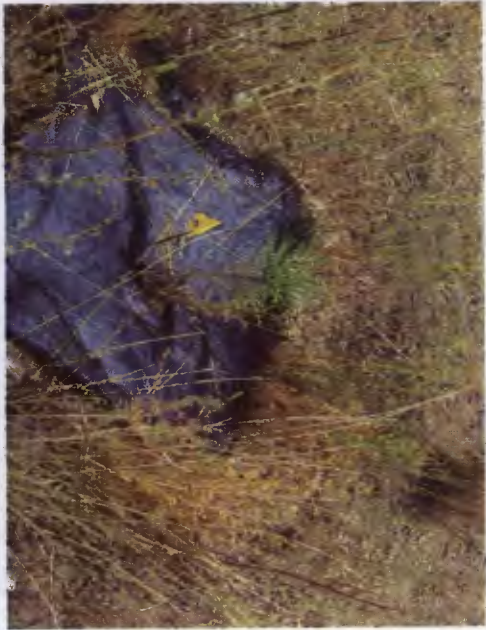
126 PU-06-330 Filed 10/27/2009 Pages: 44
Letter with First Year Monitoring Results of Tree/Shrub Planting
Enbridge Pipelines (North Dakota) LLC
Kris Benson, Environmental Analyst II

Trenton to Beaver Lodge Pipeline (PU-06-330)
 2009 Tree and Shrub Monitoring Results

Landowner Name	Area Monitored	Monitoring Results
Brian Bergstrom (2008)	entire planting	75% survival, very weedy
Kevin Soine (2008)	entire planting	90% survival
Mark Westphal (2008)	Replacement pine in field rows	64% survival
Myrtle Anderson	will be planted in 2010	
Ida Beckett	entire planting	90-95% survival
Bethania Cemetary	entire planting	90-95% survival
Tom Bloch	entire planting	90-95% survival
Dominic Didier	entire planting	90-95% survival
Mike Ellis	entire planting	90-95% survival
Epping City	entire planting	90-95% survival
Faith Cemetery	entire planting	90-95% survival
Wade Forsberg	entire planting	90-95% survival
Klint Harsoch	entire planting	90-95% survival
Mark Owan	entire planting	90-95% survival
Lynden Skaare	entire planting	90-95% survival
Todd Sletvold	entire planting	75-80% survival
Mark Westphal (2009)	entire planting	80% survival
Royce Aslakson	entire planting	90-95% survival
Bill Bennett	entire planting	80% survival
Laverne Kerbaugh	entire planting	90-95% survival
Brad Olson	entire planting	90-95% survival
Ray Papineau	entire planting	90-95% survival
Brian Reider field 1	entire planting	51% survival
Brian Reider field 2	entire planting	90-95% survival
Brian Reider field 3	entire planting	70% survival
Brian Reider field 4	entire planting	90-95% survival
Brian Reider field 5	entire planting	90-95% survival
Brian Reider field 6	entire planting	90-95% survival
Brian Reider field 7	entire planting	90-95% survival
Brian Reider field 8	entire planting	90-95% survival
Bobbie Erickson	entire planting	90-95% survival
Corey Moen	entire planting	90-95% survival
Dan Vallevik field 1	entire planting	90-95% survival
Dan Vallevik field 2	entire planting	90-95% survival
Chris Vallevik	entire planting	81% survival
Jim Bureau	entire planting	90-95% survival
Joe Hughes	entire planting	90-95% survival
Tom Irgens	entire planting	90-95% survival
Mike Kueffler	entire planting	90-95% survival
David Nelson	entire planting	90-95% survival
Stone, Nessett	entire planting	90-95% survival



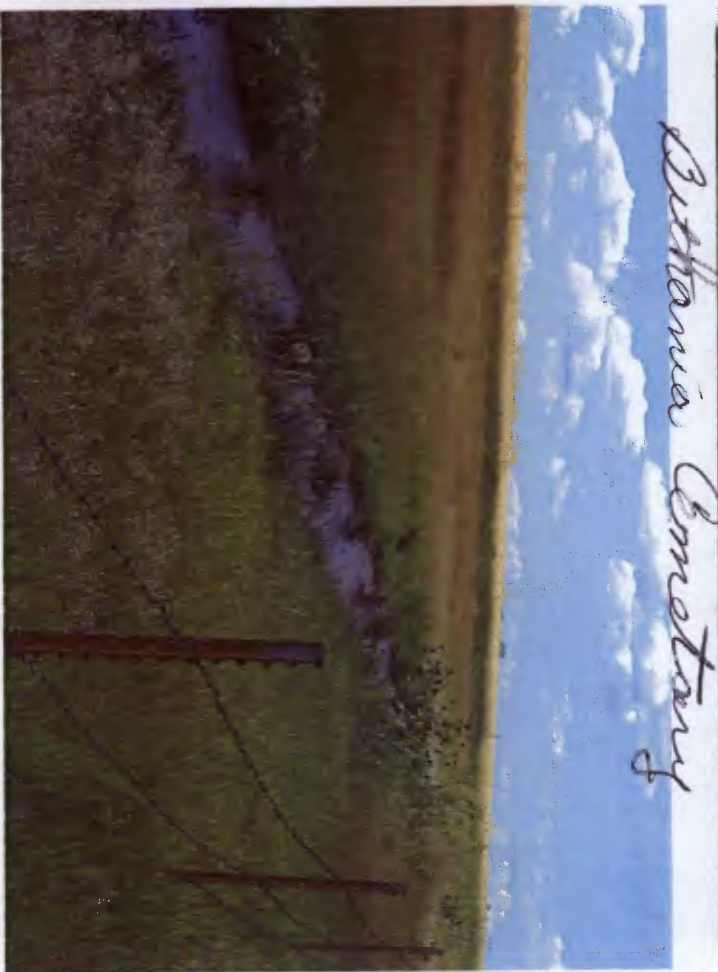
Brown Broughtons
 very weedy but
 most of the trees
 are alive. They
 are stunted due to
 weed competition.



Mark the final 2008 planting
very poor survival rate due
to very dry conditions.



Jala Baebeck
gorgon planting
very high survival
rate.



Tom Bleck - will send her - best of Canagana - sends
to say thank you for the trees



Mike Ellis - lots of volunteer grain -
most of trees are alive





City of Epping
needs a few more
one dead



Faith Cemetery

Clade Struberg



Went back
then took good
the plans to put in a
ship system and haul
water to them.





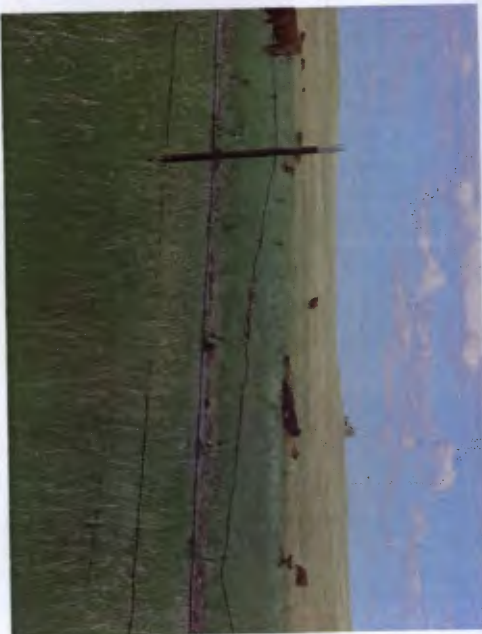
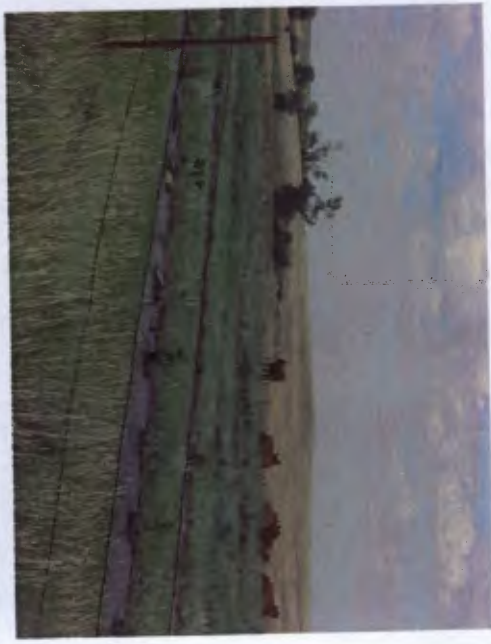
Legend says there
are wood the pine to
replace them in their
spouting field now.

Todd Stetrol - very weedy trees are mostly alive



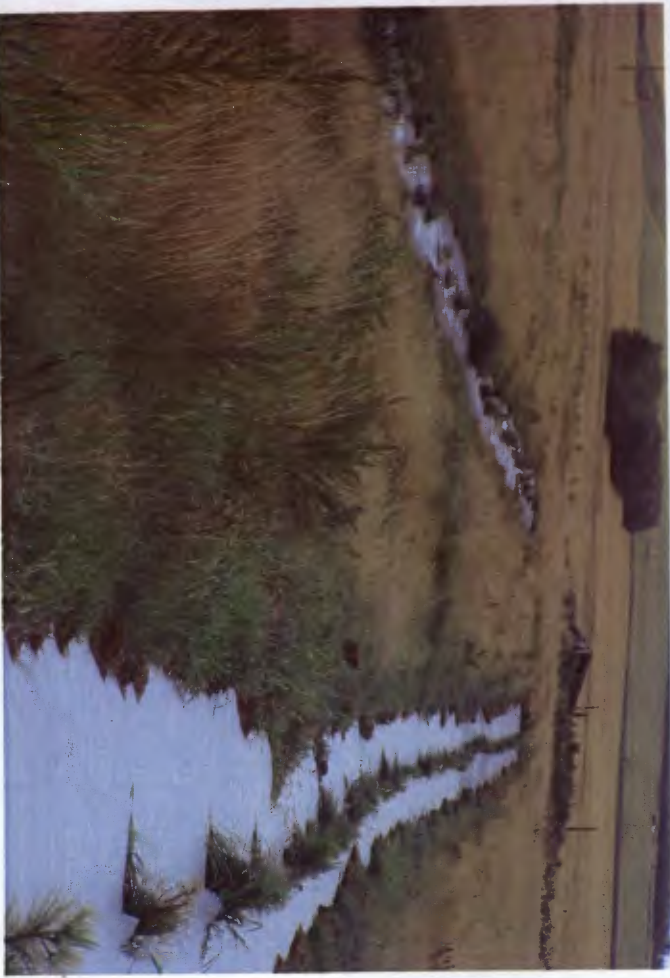
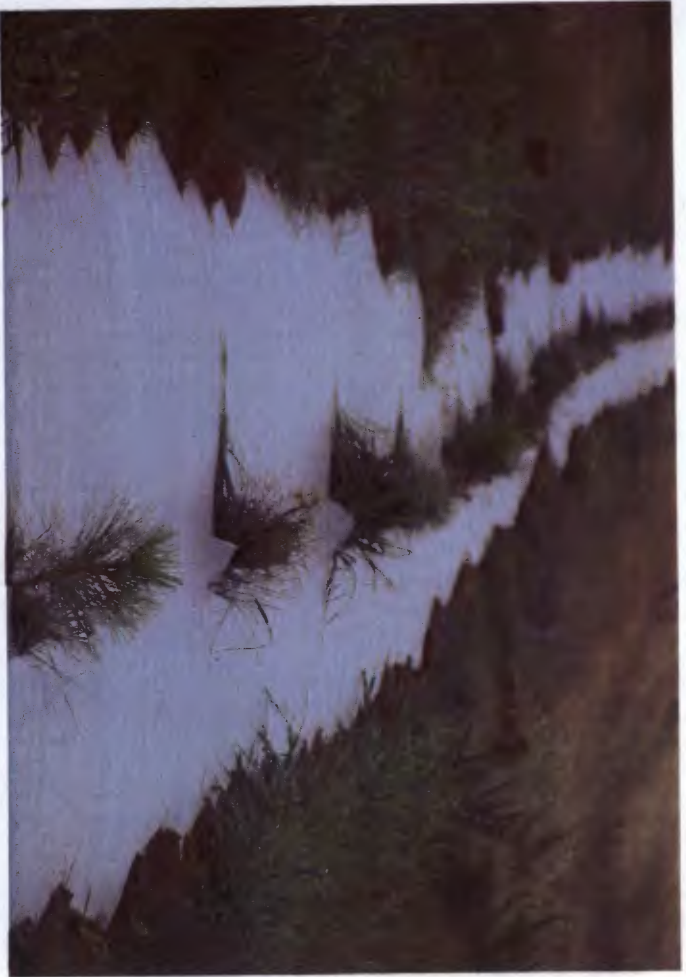
Mark Westphal
2009 Planting





Boyer Oklahoma

Bill Bennett





La Borne Kolbenschlag

Good News

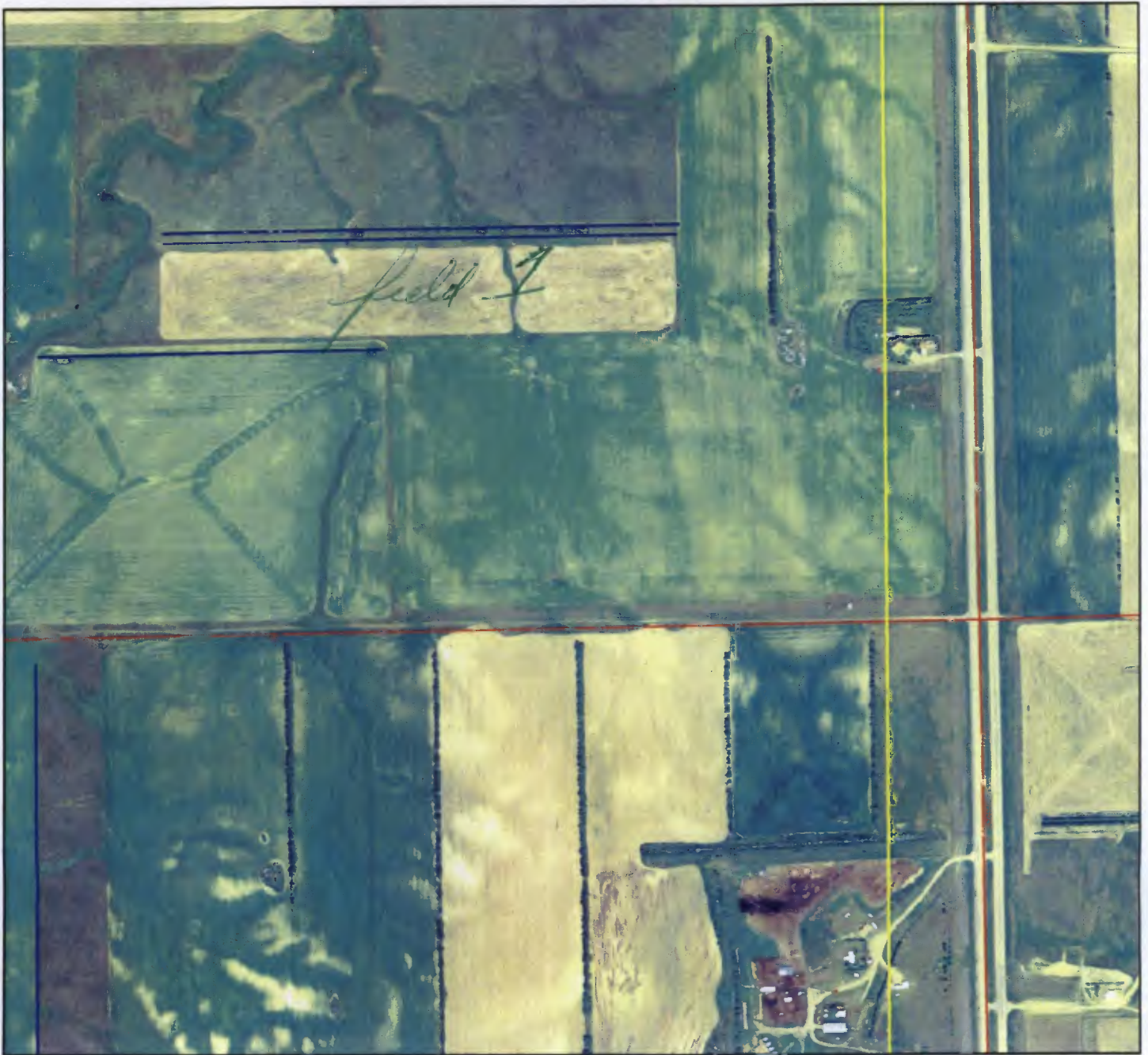




Raymond Papineau

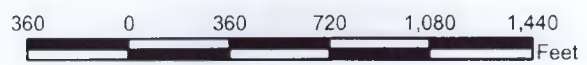


Agency:



Legend





- Practices (lines)
- Brian Reider
- Soils Map
- Williams PLSS

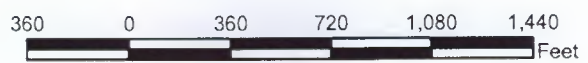


Agency:



Legend

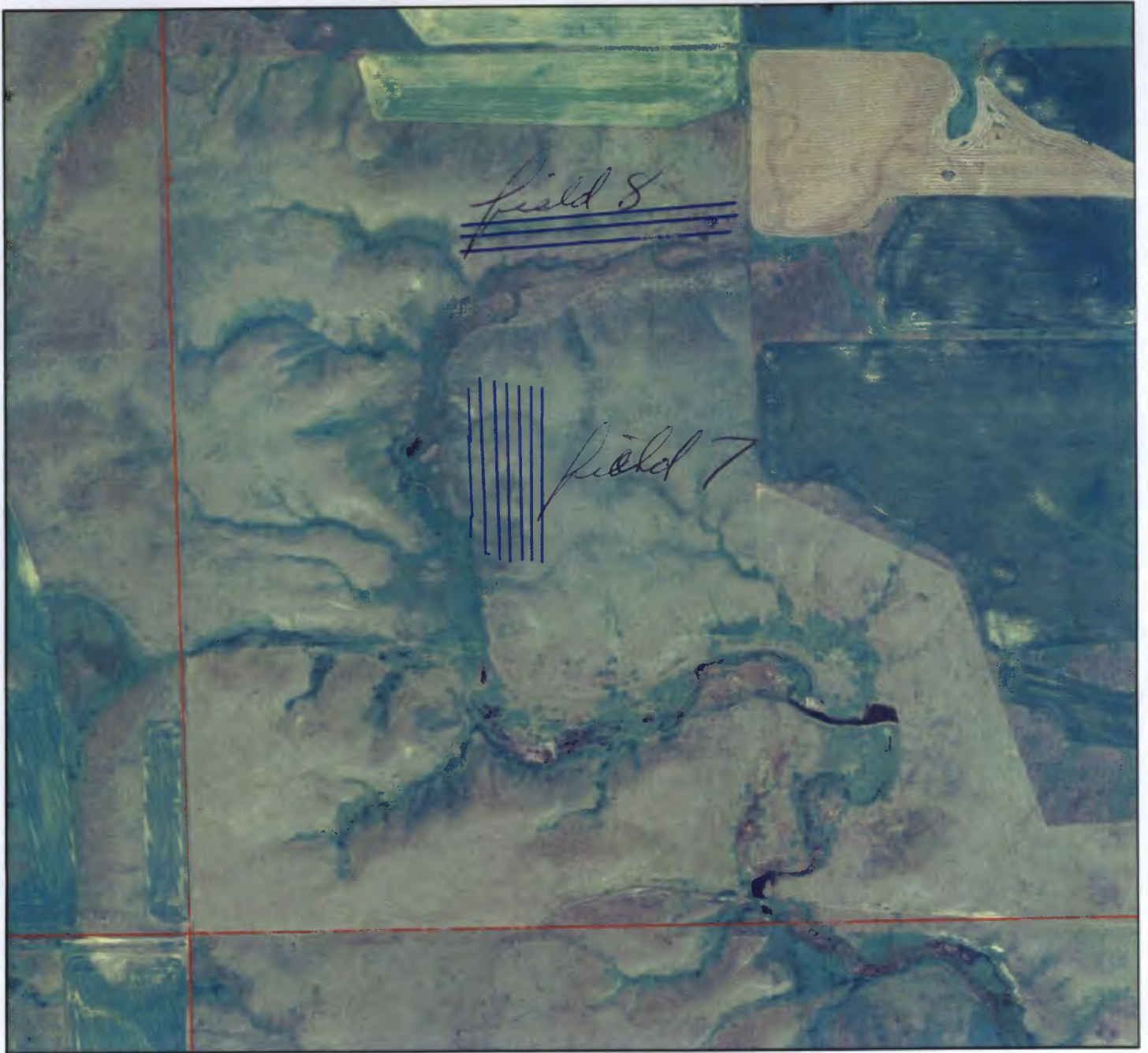
-  Practices (lines)
-  Brian Reider
-  Soils Map
-  Williams PLSS



N

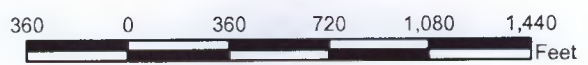


Agency:



Legend

- Practices (lines)
- Brian Reider
- Soils Map
- Williams PLSS



Queen Weaver



South river



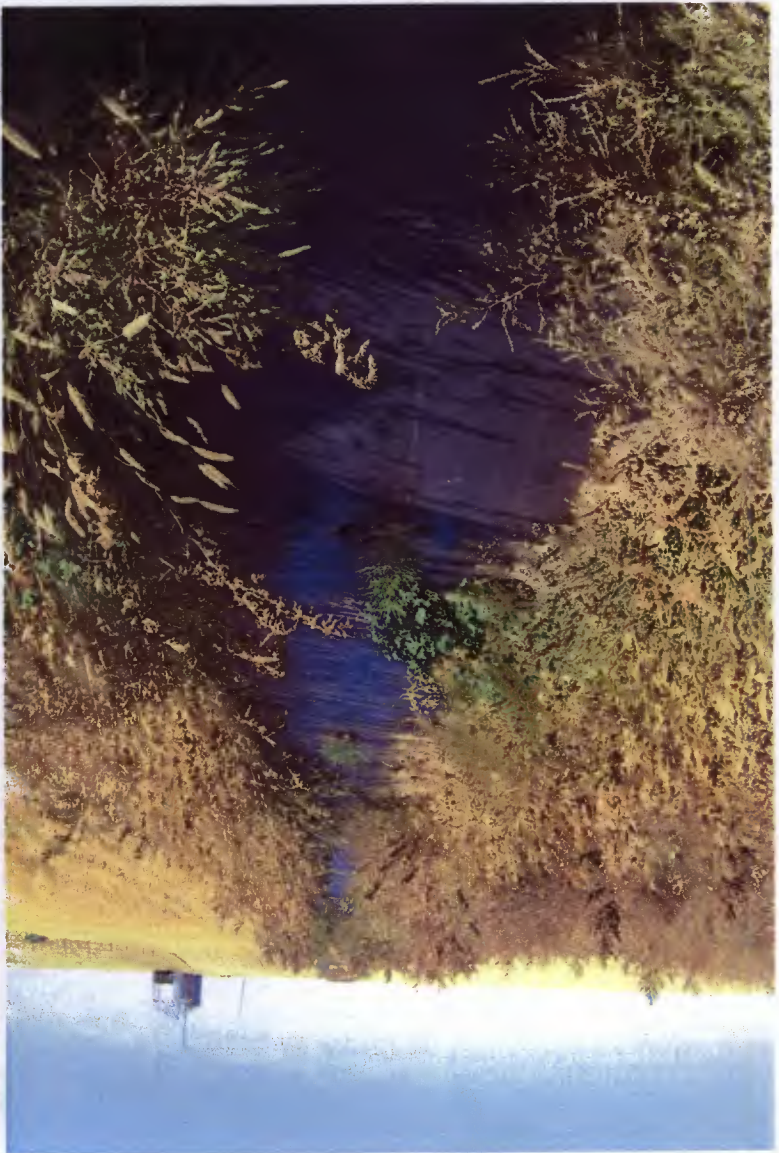
held I nearly all the oak one dead



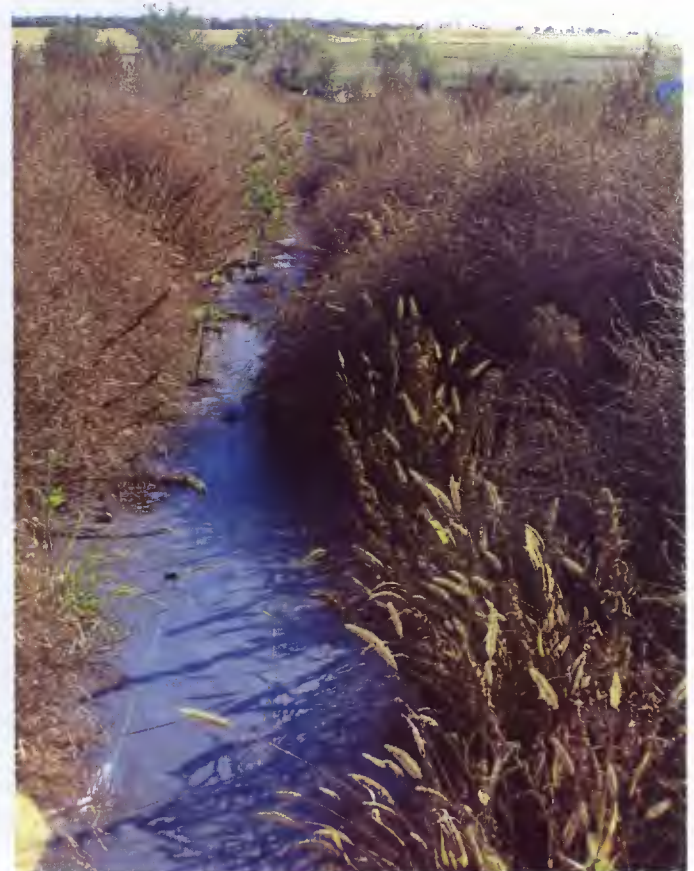


Brown Redden
fields!
north west
many dead
have to

Brown Herons
Field 2
north-south row

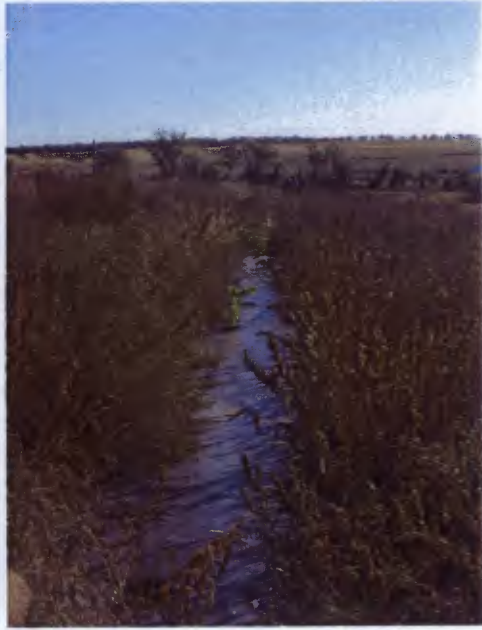


Guan Redler field 2 east-west rows



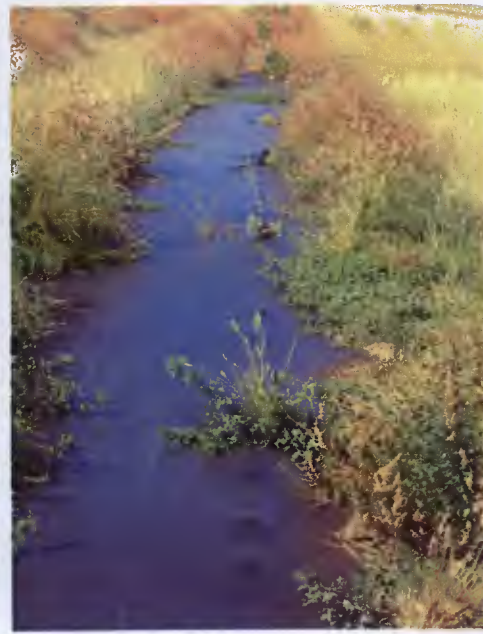
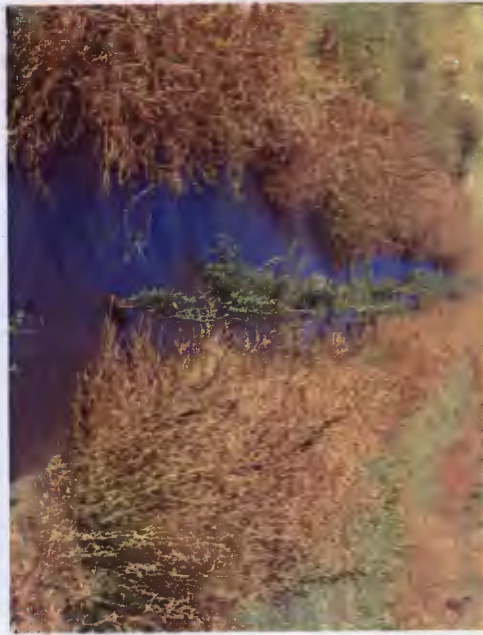


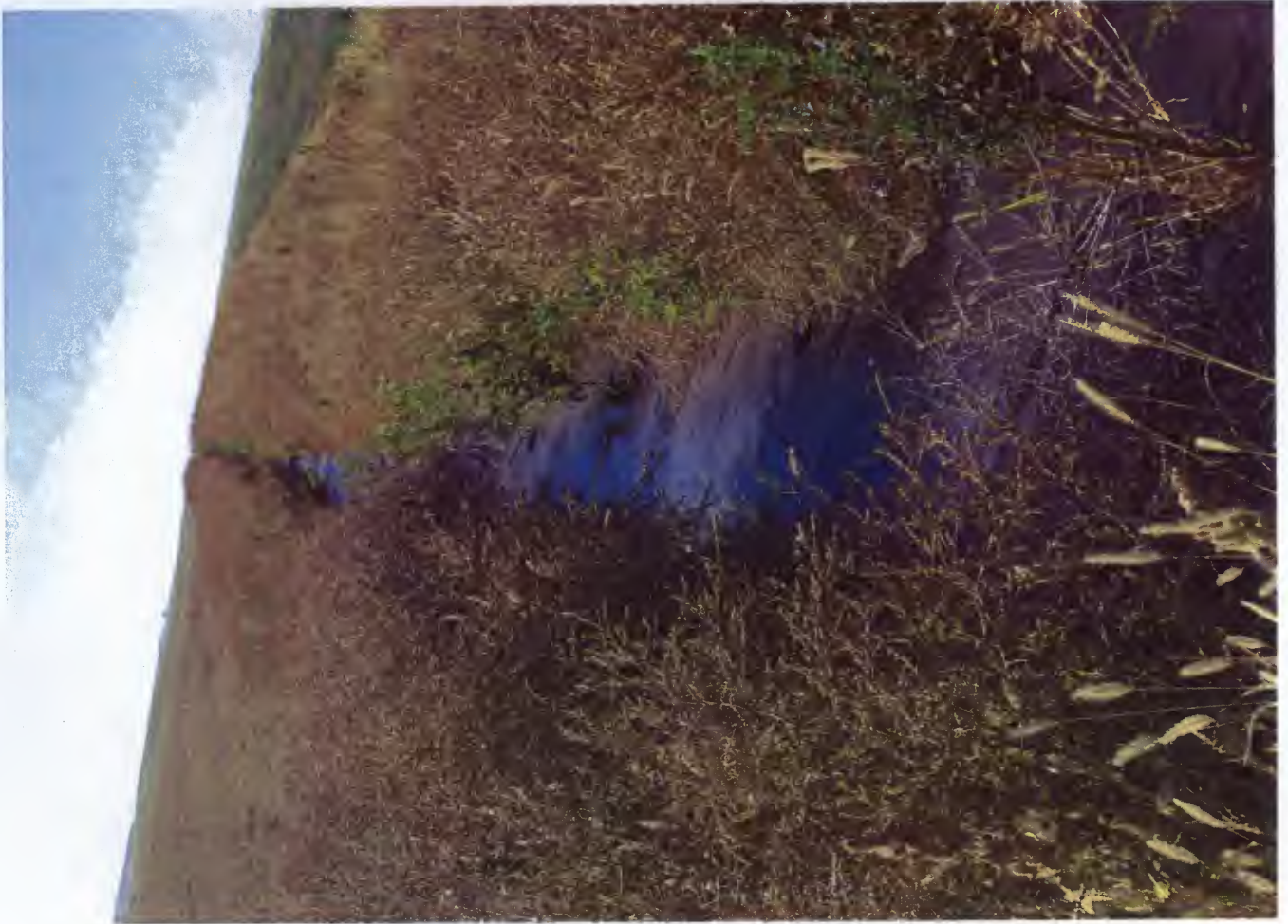
Brent's Reeds
Field 3



Field 2
Brian Redden

Green Road, July 5 east - north view





Brian Reader field 4 north-south rows





field 5 Brian Rieder



field 5
Brian Reeder

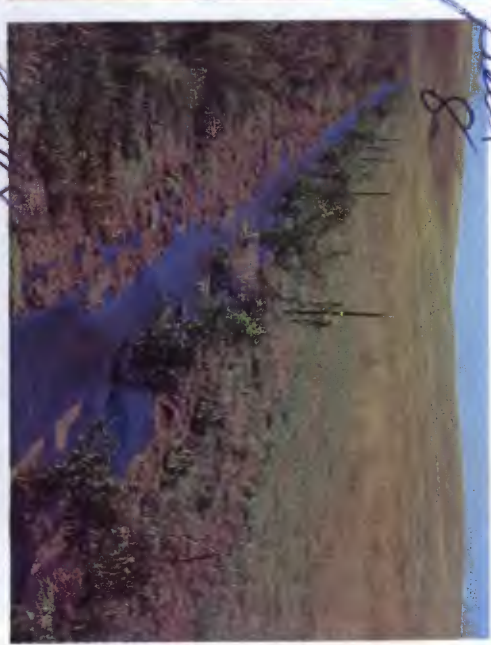
Field 8



Field 8



Field 8



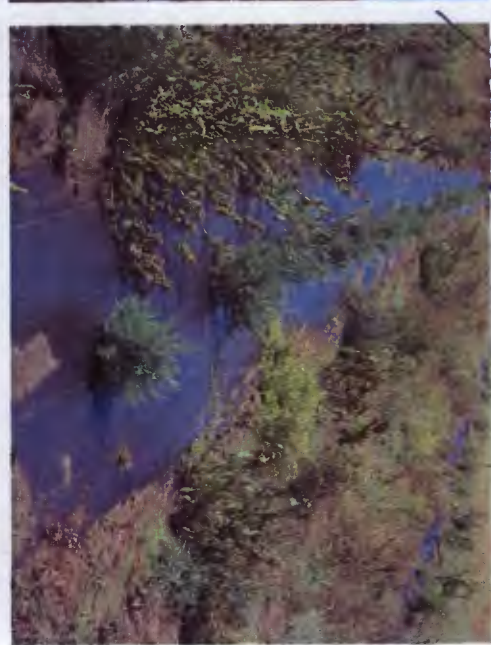
Field 7



Field 7



Field 7



Field 7



Field 7



Field 7



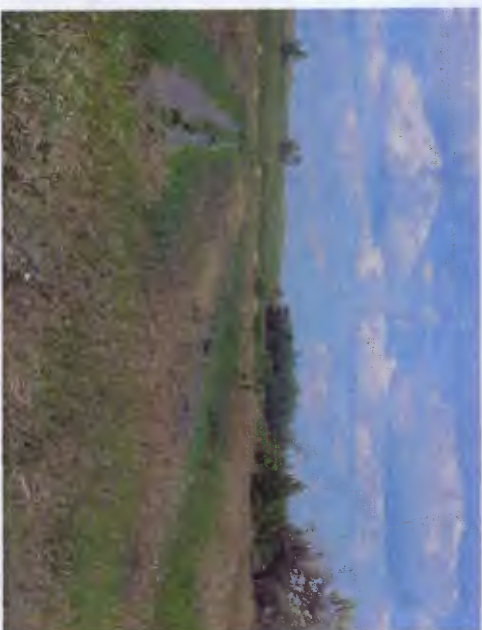
Green Field

Robert Erickson

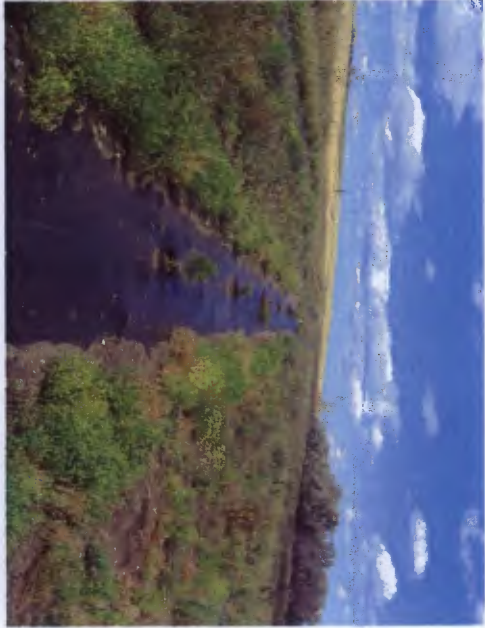
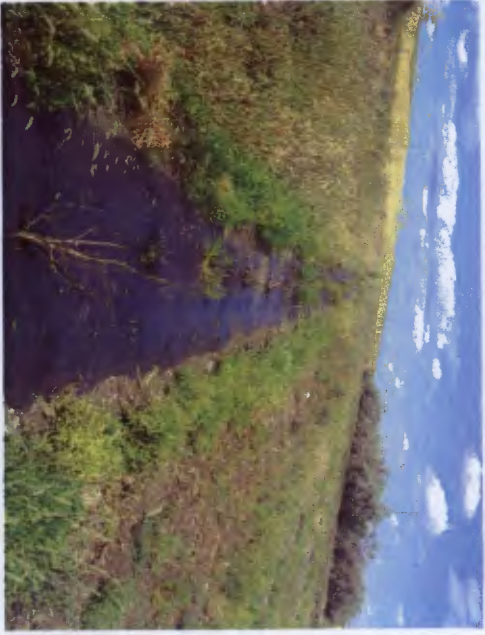


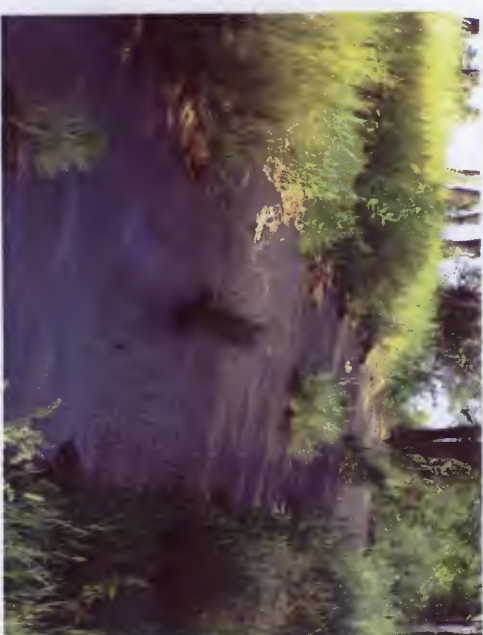
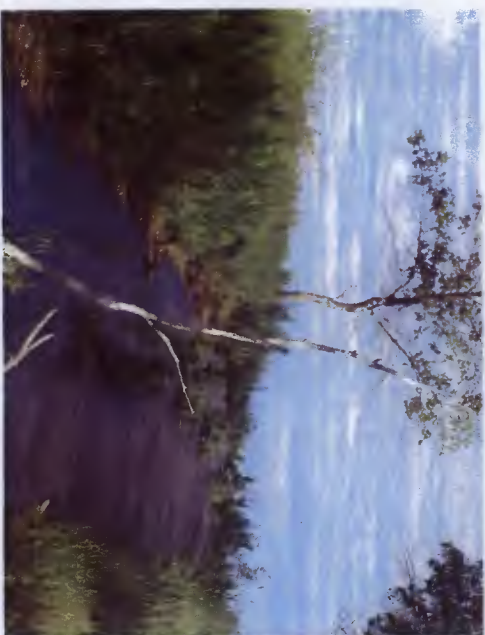


Corey Allen



Don Caldwell
Long road west of
Farm





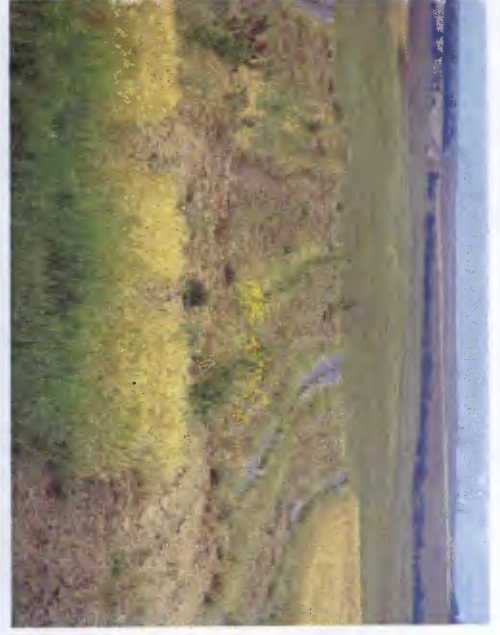
*Sam Williams
Behind Home*



Shir Vallent
The box 702
arrived but barely



major loss on oak & hick more dead oak

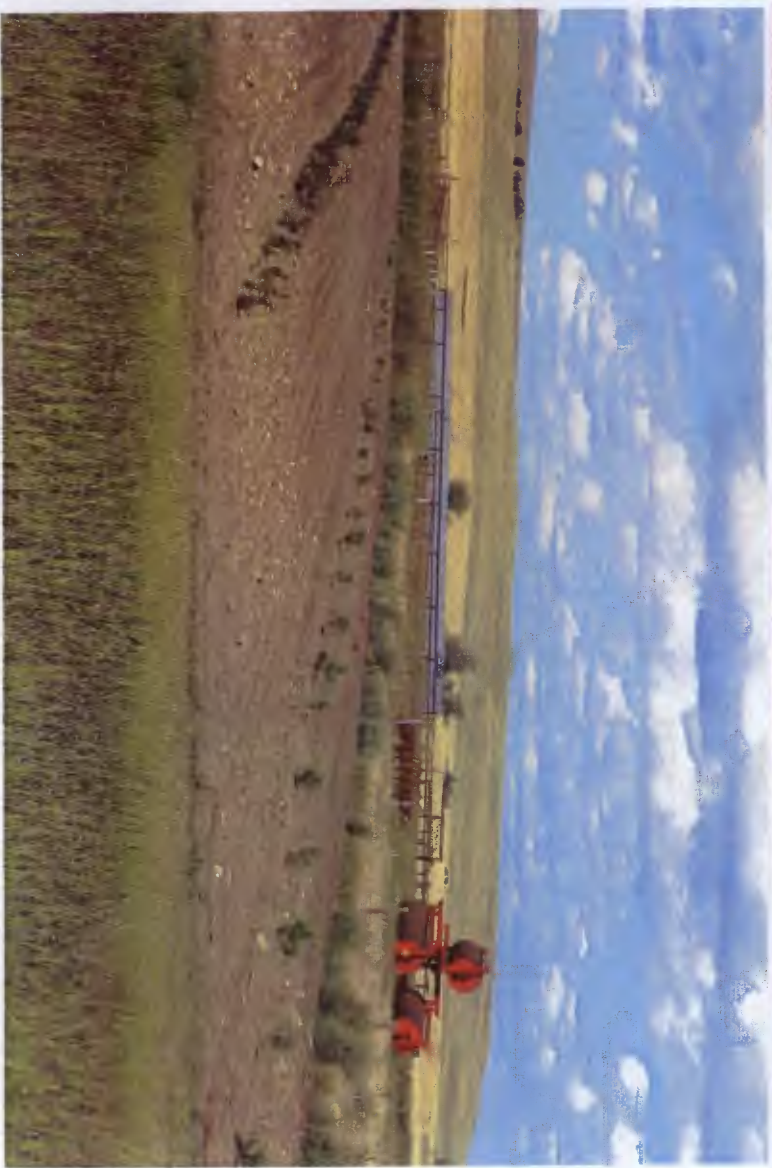


Jane Ferguson

Mike Kuylen

Mike won the
tree maintenance
award for 2008.
He takes great
care of his trees





David Nelson



*Stones / Mawell
Trees*