

Kelsch Kelsch Ruff & Kranda


COPY

C.F. Kelsch
1890-1987

Attorneys at Law
Mandan, North Dakota

William C. Kelsch
Retired

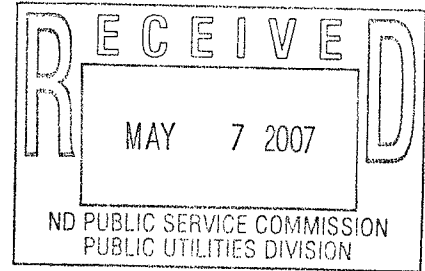
THOMAS F. KELSCH
ARLEN M. RUFF, P.C.
THOMAS D. KELSCH, P.C.
TODD D. KRANDA, P.C.*
WILLIAM J. DELMORE
DANIEL NAGLE

 MERITAS LAW FIRMS WORLDWIDE

103 Collins Avenue
P.O. Box 1266
Mandan, ND 58554-7266
Phone (701) 663-9818
1-888-663-9818
Fax (701) 663-9810
Website www.kelschlaw.com

*Also Licensed in Minnesota

May 4, 2007



MELRE KRATOCHVIL
6355 COUNTY ROAD 14
LANKIN ND 58250

Re: TransCanada - Keystone Pipeline Project
Case No: PU-06-421
Our File No. 11815

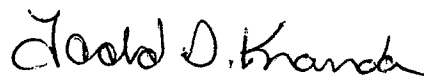
Dear Mr. Kratochvil:

I am local counsel for TransCanada Keystone Pipeline, LP. I was contacted by Patrick Fahn from the North Dakota Public Service Commission recently and he asked that I provide to you a detailed map showing your property in relation to the proposed route for the Keystone pipeline. Specifically, your property was described as being located in Sections 11 & 14 of Township 156 Range 57 Walsh County.

Accordingly, on behalf of TransCanada Keystone Pipeline, LP, I have obtained and I am enclosing for your reference three 8½ by 11 maps which are at a scale of 1":500' showing the proposed Keystone pipeline route in relation to your specific land which has been outlined on these maps.

If you have any questions, please feel free to contact me.

Sincerely,



Todd D. Kranda

TK:ls

Encs

c: ND Public Service Commission





Walsh County

MERLE KRATOCHVIL

2006 AERIALS

Legend

- KEYSTONE PIPELINE ROUTE
- PERMANENT EASEMENT
- TEMPORARY EASEMENT
- TEMPORARY EXTRA WORK SPACE

NO.	REVISION	DATE	APPR.	1"=500'	10/30/06	AH	JTG	APPROVED	NO.
1	ISSUED FOR REVIEW	05.01.07	RD						
2	ISSUED FOR REVIEW	04.23.07	RD						
3	ISSUED FOR REVIEW	04.23.07	RD						

PREPARED BY:
TROW ENGINEERING CONSULTANTS INC.
 1300 Managottan Boulevard, Suite 200
 Tallahassee, Florida, USA 32308
 Phone: 1-904-781-8451
 Fax: 1-904-781-5120

Trow

TransCanada
In business to deliver
KEYSTONE PIPELINE PROJECT
NORTH DAKOTA ROUTE SHEETS

PROJECT:	ISSUING DRAWING:	SHEET:	REVISION:
50338E	K-36-P-9015-A-036	1A-036	0



T.156N
R.57W
SEC. 11

MERLE
KRATOCHVIL

MERLE KRATOCHVIL

Walsh County

2006 AERIALS

Legend

- KEYSTONE PIPELINE ROUTE
- PERMANENT EASEMENT
- TEMPORARY EASEMENT
- TEMPORARY EXTRA WORK SPACE

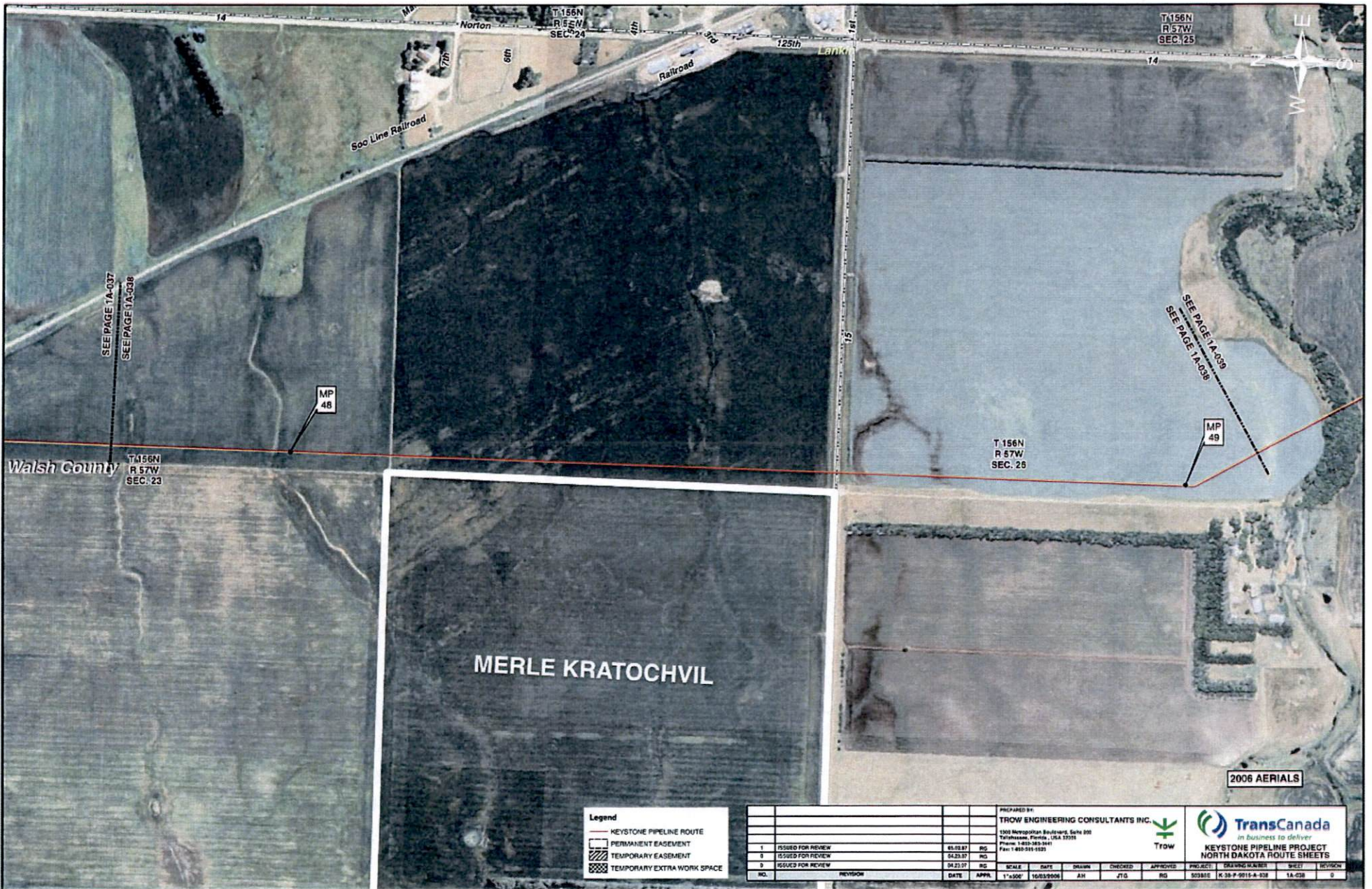
NO.	REVISION	DATE	APPR.
1	ISSUED FOR REVIEW	08.23.07	RG
2	ISSUED FOR REVIEW	04.23.07	RG
3	ISSUED FOR REVIEW	04.23.07	RG

PREPARED BY
TROW ENGINEERING CONSULTANTS INC.
 1200 Mississippi Boulevard, Suite 200
 Tallahassee, Florida, USA 32310
 Phone: 1-904-284-5141
 Fax: 1-904-284-5222



KEYSTONE PIPELINE PROJECT
 NORTH DAKOTA ROUTE SHEETS

NO.	SCALE	DATE	DRAWN	CHECKED	APPROVED	PROJECT	DRAWING NUMBER	SHEET	REVISION
	1"=300'	10/03/2006	AK	JTG	RG	SO384E	K-38-P-0115-A-017	1A-017	0



SEE PAGE 1A-037
SEE PAGE 1A-038

SEE PAGE 1A-039
SEE PAGE 1A-038

Walsh County
T156N
R 57W
SEC. 23

T 156N
R 57W
SEC. 28

MP 48

MP 49

MERLE KRATOCHVIL

2006 AERIALS

Legend

- KEYSTONE PIPELINE ROUTE
- ▭ PERMANENT EASEMENT
- ▨ TEMPORARY EASEMENT
- ▩ TEMPORARY EXTRA WORK SPACE

NO.	REVISION	DATE	APPR.
1	ISSUED FOR REVIEW	01/08/07	RG
2	ISSUED FOR REVIEW	02/23/07	RG
3	ISSUED FOR REVIEW	04/23/07	RG

PREPARED BY:
TROW ENGINEERING CONSULTANTS INC.
1300 Metropolitan Boulevard, Suite 200
Tallahassee, Florida, USA 32310
Phone: 1-850-565-5141
Fax: 1-850-561-1523

Trow

SCALE	DATE	DRAWN	CHECKED	APPROVED	PROJECT	DRAWING NUMBER	SHEET	REVISION
1"=500'	10/03/2006	AH	JTG	RG	50381E	K-38-P-0011-A-038	1A-038	0

TransCanada
in business to deliver

KEYSTONE PIPELINE PROJECT
NORTH DAKOTA ROUTE SHEETS