

EXHIBIT 2
RS1
7-23-07

PENGAD 800-800-131-6989

Siting

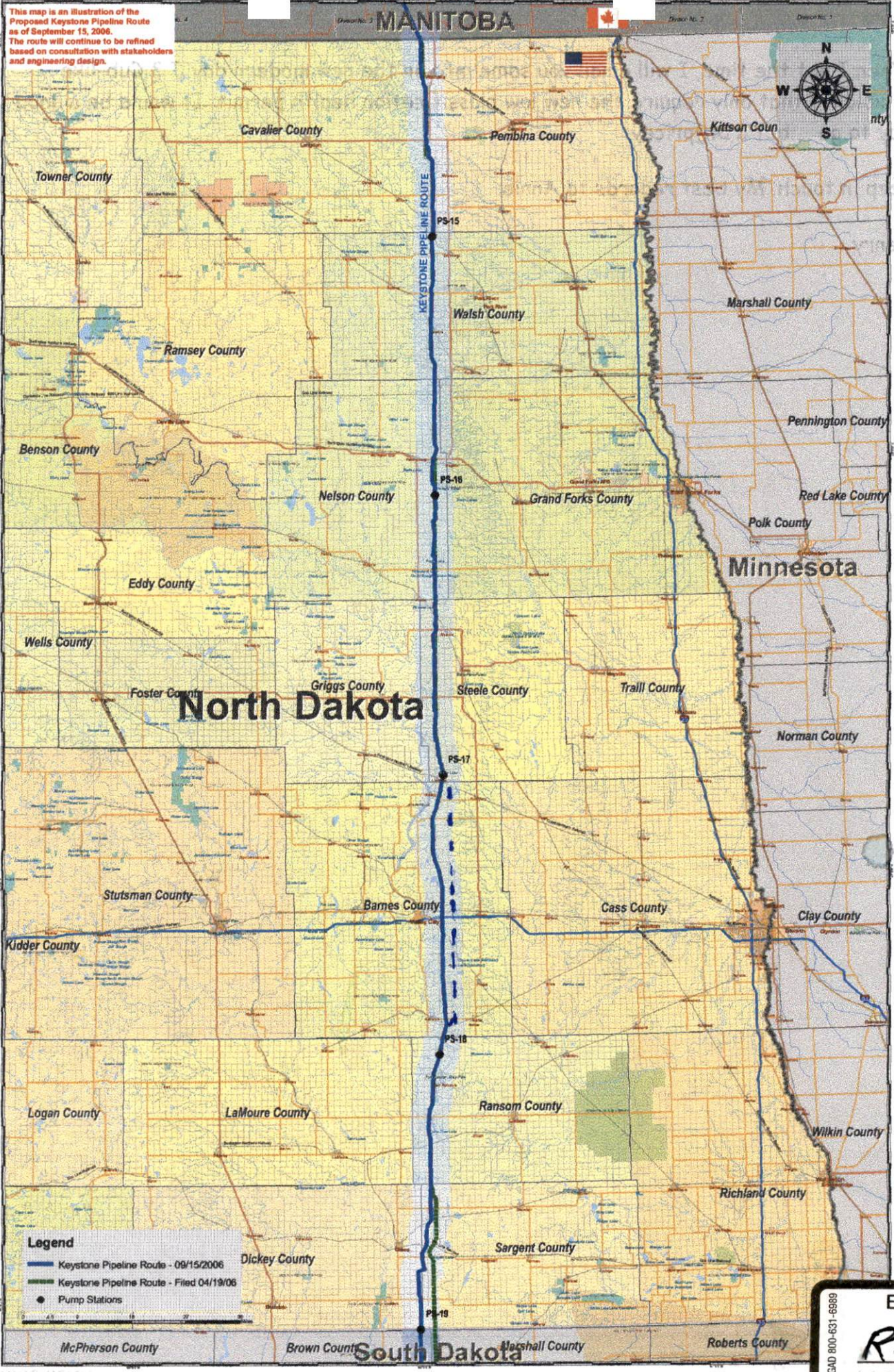
155 PU-06-421

Pages: 3

Exhibits RS1, RS2 & RS3 Plat Drawing, Map,
Photograph
by Public Service Commission
09/23/2007
CC: Comm Legal Illona, Pat ALJ

Atch 2

This map is an illustration of the Proposed Keystone Pipeline Route as of September 15, 2006. The route will continue to be refined based on consultation with stakeholders and engineering design.



Siting

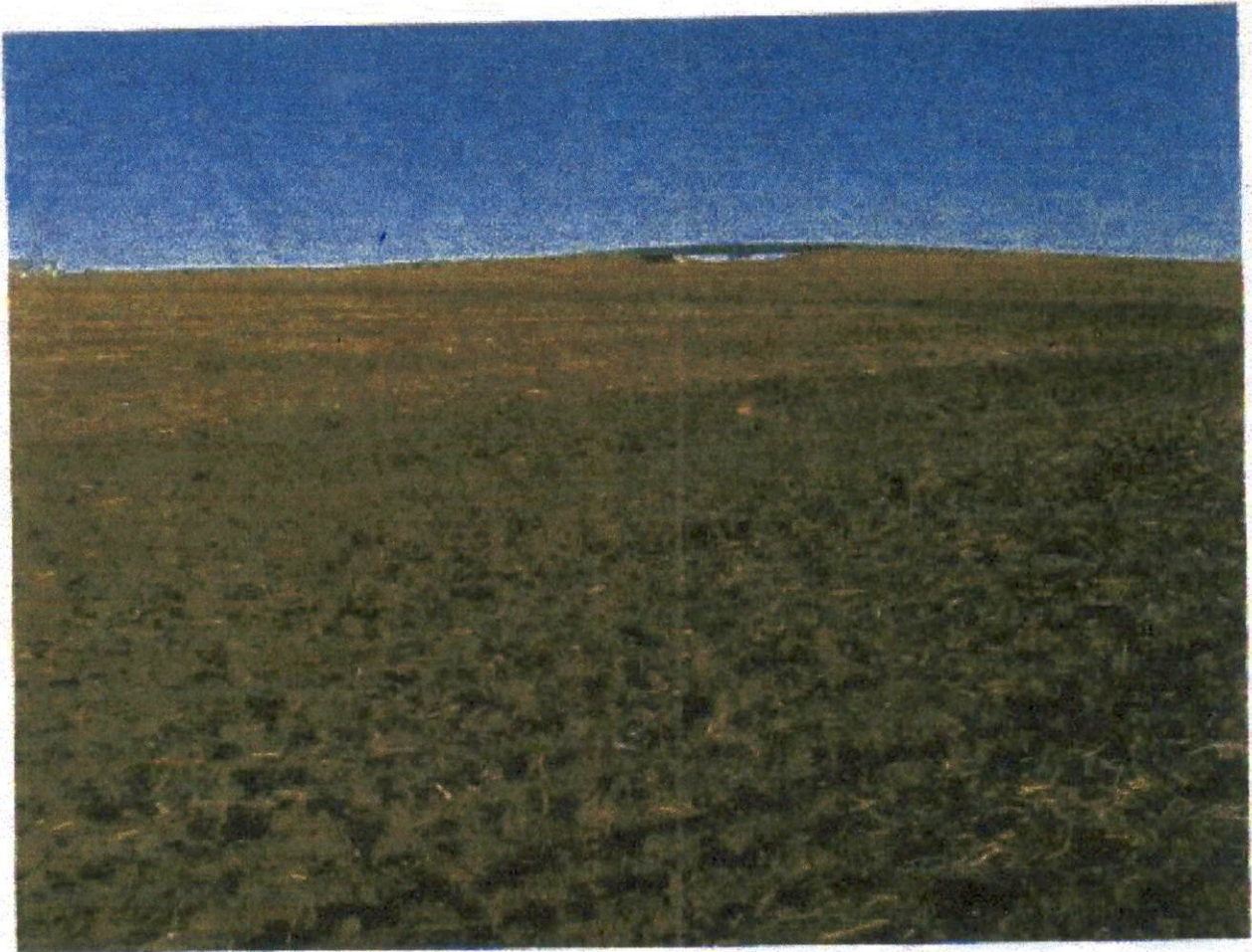
PENGAD 800-637-6889

EXHIBIT C

RSZ

7-23-07

Anten 3



LOOKING N.E.



Siting
EXHIBIT
R53
7-23-01

12/26/2006