

VC 1



Legend

- KEYSTONE PIPELINE ROUTE
- ▭ PERMANENT EASEMENT
- ▨ TEMPORARY EASEMENT
- ▩ TEMPORARY EXTRA WORK SPACE

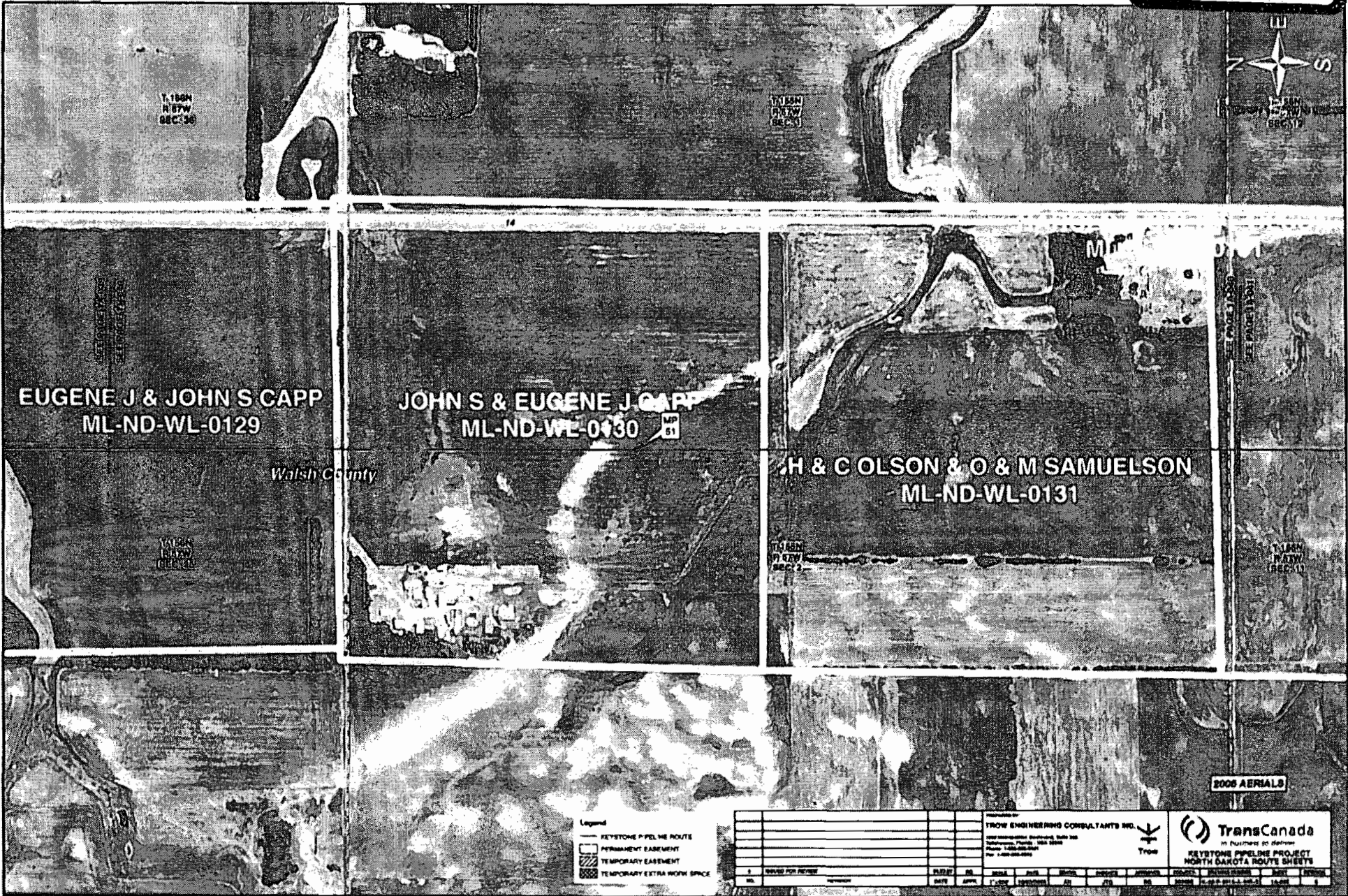
NO.	REVISION	DATE	BY	CHKD.	APP'D.	REVISED FOR
1	ISSUED FOR REVIEW					

Prepared by:
TROW ENGINEERING CONSULTANTS INC.
 200 Westpark Industrial Center SW
 Palm Bay, Florida 32909
 Phone: 321-836-3300
 Fax: 321-836-3301

TransCanada
 4400 Centre St. Denver
KEYSTONE PIPELINE PROJECT
 NORTH DAKOTA ROUTE SHEETS

2006 AERIALS

EXHIBIT
0.C2



EUGENE J & JOHN S CAPP
 ML-ND-WL-0129

JOHN S & EUGENE J CAPP
 ML-ND-WL-0130

H & C OLSON & O & M SAMUELSON
 ML-ND-WL-0131

Walsh County

- Legend**
- KEYSTONE PIPELINE ROUTE
 - PERMANENT EASEMENT
 - TEMPORARY EASEMENT
 - TEMPORARY EXTRA WORK SPACE

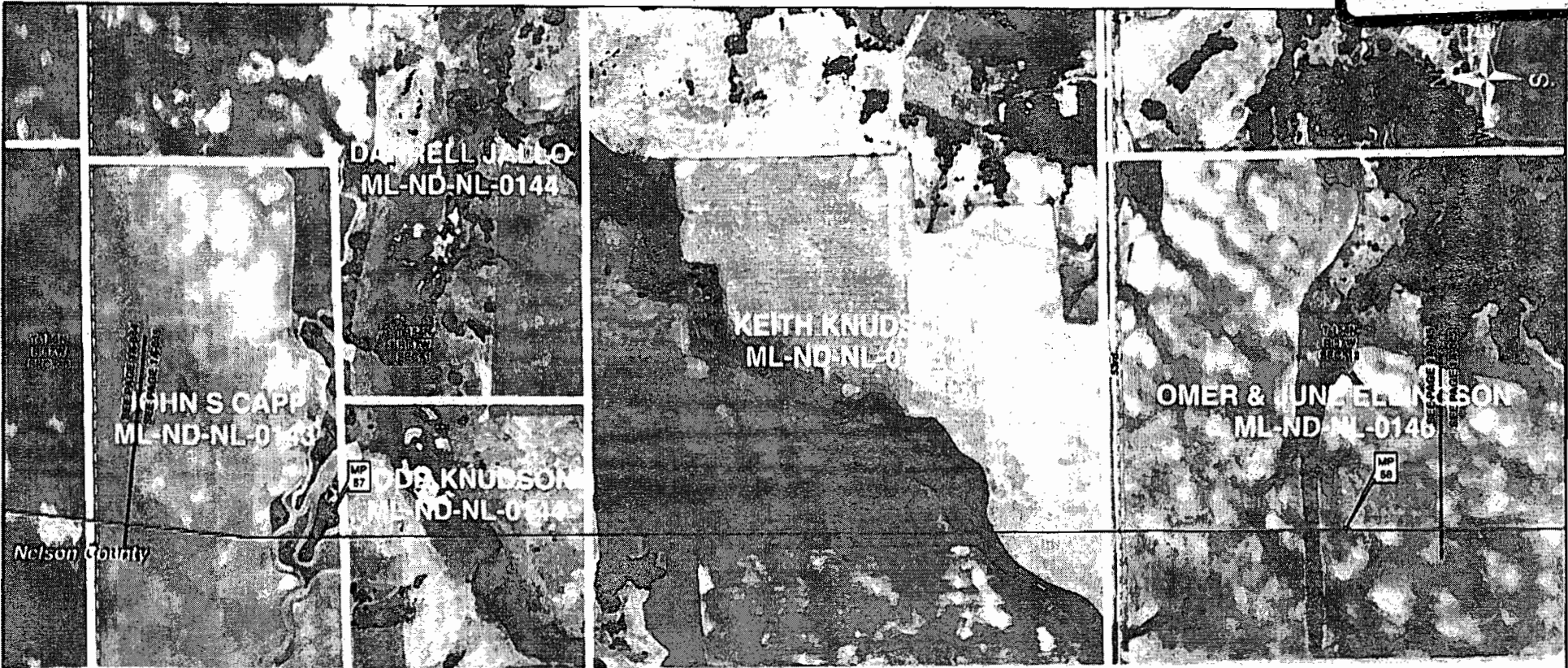
NO.	REVISED FOR REVIEW	DATE	BY	REASON

2006 AERIALS

Prepared by
TROW ENGINEERING CONSULTANTS INC.
 1000 International Boulevard, Suite 100
 Minneapolis, Florida 33616
 Phone 781-226-2244
 Fax 781-226-2244

TransCanada
 in partnership with
KEYSTONE PIPELINE PROJECT
 NORTH DAKOTA ROUTE SHEETS

NO.	REVISED FOR REVIEW	DATE	BY	REASON



Legend

- KEYSTONE PIPELINE ROUTE
- ▭ PERMANENT EASEMENT
- ▨ TEMPORARY EASEMENT
- ▩ TEMPORARY EXTRA WORK SPACE

NO		DATE		BY		REVISION	

Prepared by:
TROW ENGINEERING CONSULTANTS INC.
 400 Westgate Parkway, Suite 200
 Henderson, NC 27534
 Phone: 704-944-4444
 Fax: 704-944-4444

TransCanada
In Business to Deliver
 KEYSTONE PIPELINE PROJECT
 NORTH CAROLINA ROUTE SHEETS

Project No: 000000
 Sheet No: 14-001
 Date: 12-01-11