

Fahn, Patrick J.

From: Todd Kranda [kranda@kelschlaw.com]
Sent: Tuesday, May 13, 2008 4:33 PM
To: Olafson, Curtis; Tallackson, Harvey D.; Heckaman, Joan M.; Lindaas, Elroy N.; Robinson, Larry J.; Heitkamp, Joel C.; Damschen, Charles D.; Monson, David C.; Herbel, Gil; Kingsbury, Joyce M.; Aarsvold, Ole L.; Kaldor, Lee A.; Vig, Benjamin A.; Vigesaa, Donald W.; Metcalf, Ralph E.; Mueller, Phil; Amerman, Bill D.; Gulleson, Pam M.
Cc: Fahn, Patrick J.; Binek, William W.; 'Thomas D Kelsch'
Subject: Notice of Deadline for Any Comment to PSC by 5:00 PM central Friday May 16, 2008
Attachments: Keystone - Ten Maps for 4-7-08 Motion .pdf; Keystone - Outline for 4-7-08 Motion.pdf; Keystone - Five maps for 4-29-08 Motion.pdf; 7b Exhibit E - Map - Sheyenne River Crossing_RE-ROUTE (Overall)20080421.pdf

May 13, 2008

Notice to North Dakota State Senators and Representatives Pursuant to Section 69-06-01-02 ND Admin Code:

TransCanada Keystone Pipeline has previously filed with the North Dakota Public Service Commission (PSC) a Motion dated April 7, 2008 for approval of certain reroutes and a subsequent Motion dated April 29, 2008 for approval of five pending route refinements. Also, a Motion dated April 21, 2008 was filed with the PSC regarding the proposed route between mileposts 168 to 170 which includes the Sheyenne River area. These Motions are all on file with the PSC.

The PSC has requested that Keystone provide email notice to each of the State Senators and Representatives who have their Legislative Districts located along the proposed route regarding the filing of and the deadline for comment on these pending Motions that have been filed with the PSC. This email is intended to be such notification to you that any comments on the pending motions be provided in writing to the PSC located at 600 East Boulevard - Dept 408 in Bismarck, with a copy of such written comments also mailed to the undersigned, by **no later than 5:00 p.m.** central time on **Friday, May 16, 2008.**

Thank you for your attention to this matter. If you have any questions or need any further details please feel free to contact the PSC or me.

Sincerely,

Todd D. Kranda
Attorney for TransCanada Keystone Pipeline

c: Patrick Fahn, Staff with Public Service Commission
William W. Binek, Attorney for Public Service Commission
Thomas D. Kelsch, Attorney for TransCanada Keystone Pipeline

RECEIVED

MAY 13 2008

PUBLIC SERVICE COMMISSION

PS - As additional information to assist you in identifying the specific areas involved with the April 7, 2008 Motion for reroutes and with the April 29, 2008 Motion for 5 route refinements as well as the April 21, 2008 Motion for the proposed route for the Sheyenne River area between mileposts 168 and 170, attached please find PDF copies of the following:

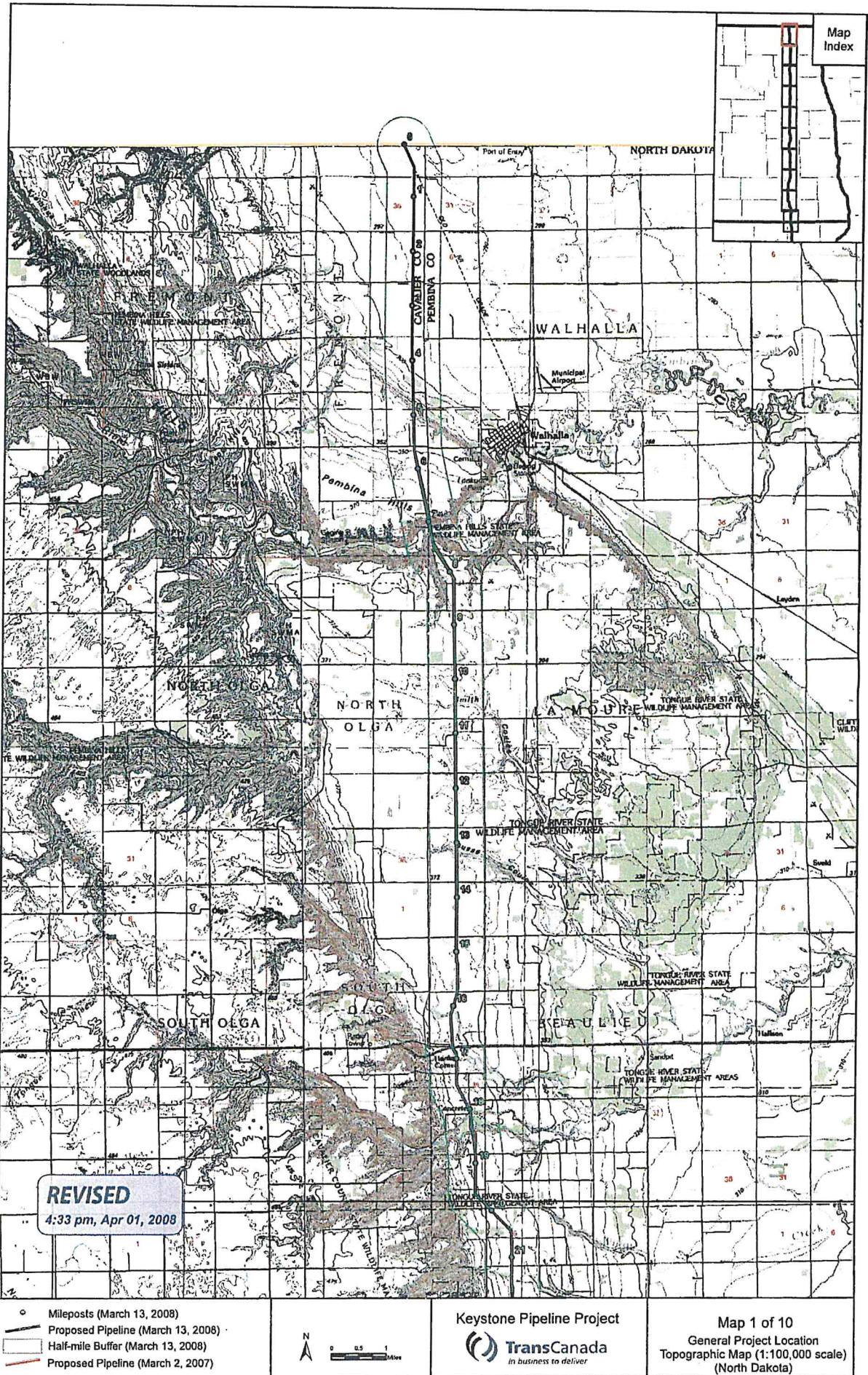
1. Outline of Route Variations for the April 7, 2008 Motion;
2. Maps (10) with milepost locations noted to use with cross reference to the route refinement areas as described on outline for April 7, 2008 Motion;
3. Maps (5) for the pending route refinements with specific individual landowners for the April 29, 2008 Motion; and
4. Map for proposed route between mileposts 168 and 170 with the Sheyenne River crossing area.

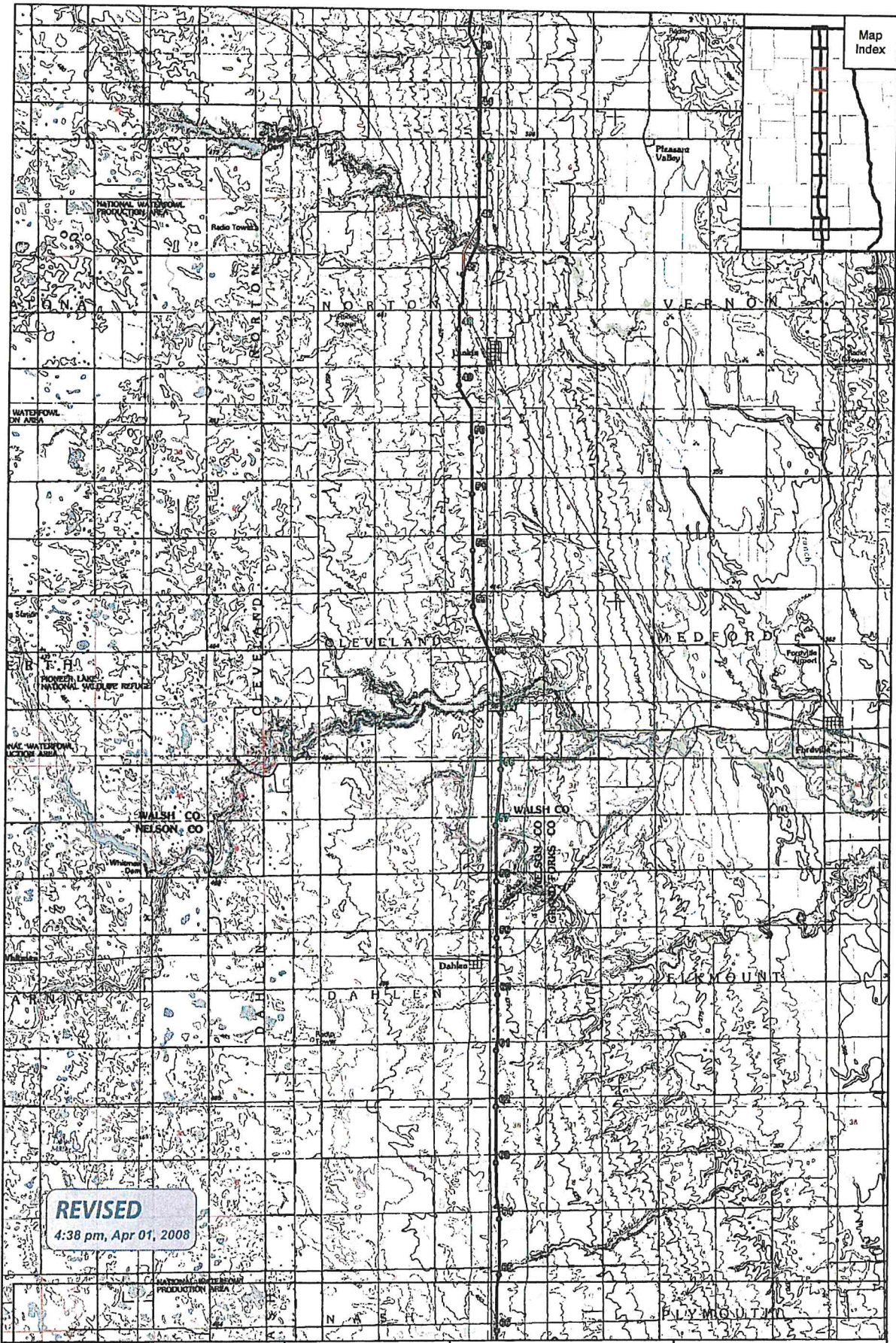
KELSCH KELSCH RUFF & KRANDA

NOTICE: This e-mail, including attachments, is covered by the Electronic Communications Privacy Act, 18 U.S.C. 2510 et seq., is confidential, and/or is legally privileged. The preceding message and any attachments are intended only for the use of the addressee and may contain information that is privileged and confidential. If the reader of this message is not the intended recipient or an authorized representative of the intended recipient, you are hereby notified that any dissemination of this communication is strictly prohibited. If you have received this communication in error, please 1) notify us immediately by e-mail to kranda@kelschlaw.com or by telephone at 701-663-9818 (toll free at 1-888-663-9818); 2) delete this e-mail, including deletion of all associated text files from all storage locations including individual and network storage devices; and 3) refrain from disseminating or copying this communication. Thank you.

Todd D. Kranda
Kelsch Kelsch Ruff & Kranda
103 Collins Avenue, PO Box 1266
Mandan ND 58554-7266
Phone 701-663-9818 (toll free 1-888-663-9818)
Fax 701-663-9810
kranda@kelschlaw.com

458 PU-06-421 Filed: 5/13/2008 Pages: 19
**Email re Notice to State Senators and
Representatives**





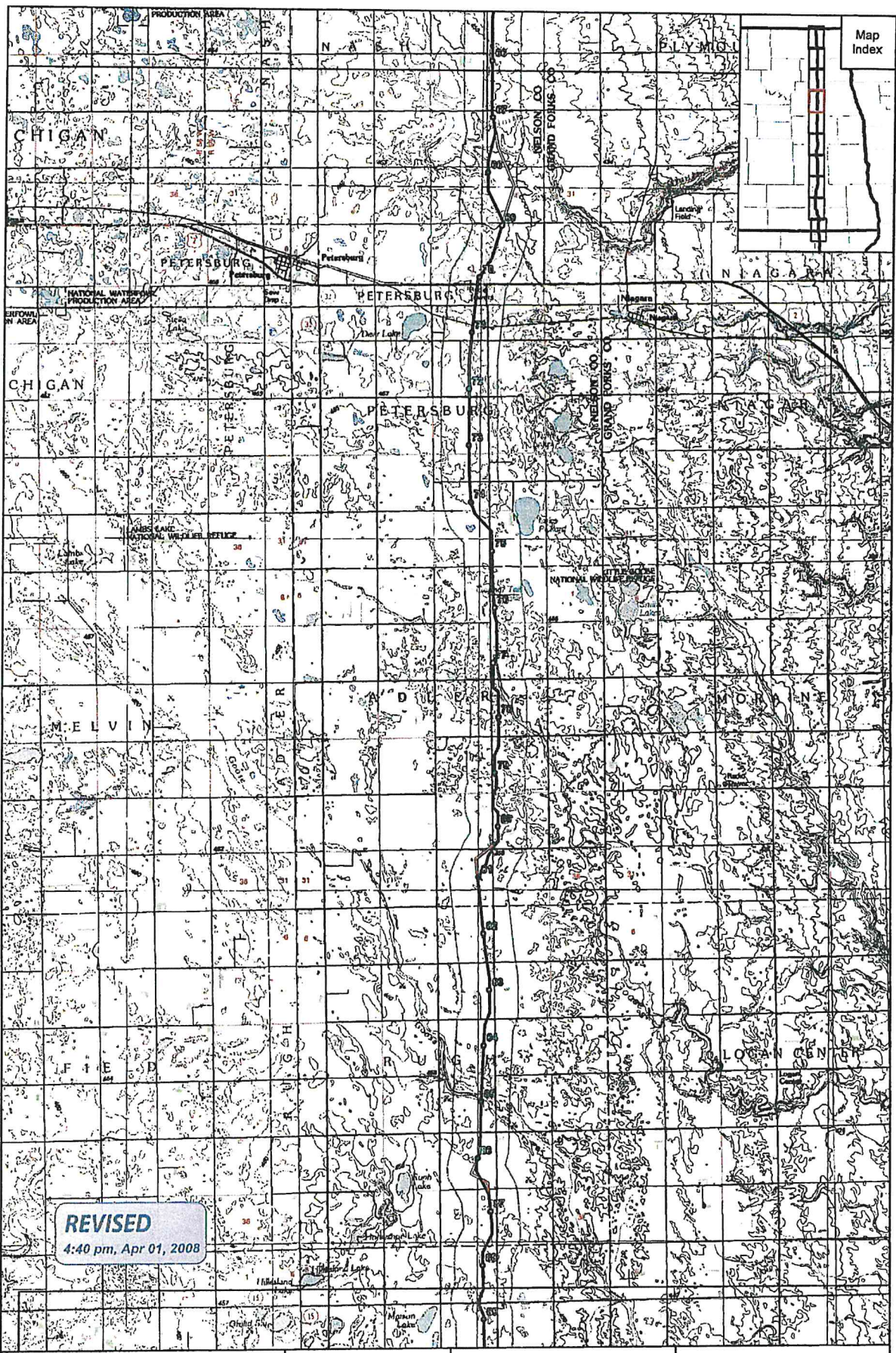
REVISED
4:38 pm, Apr 01, 2008

- Mileposts (March 13, 2008)
- Proposed Pipeline (March 13, 2008)
- Half-mile Buffer (March 13, 2008)
- Proposed Pipeline (March 2, 2007)

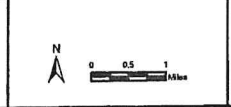


Keystone Pipeline Project
 **TransCanada**
In business to deliver

Map 3 of 10
 General Project Location
 Topographic Map (1:100,000 scale)
 (North Dakota)



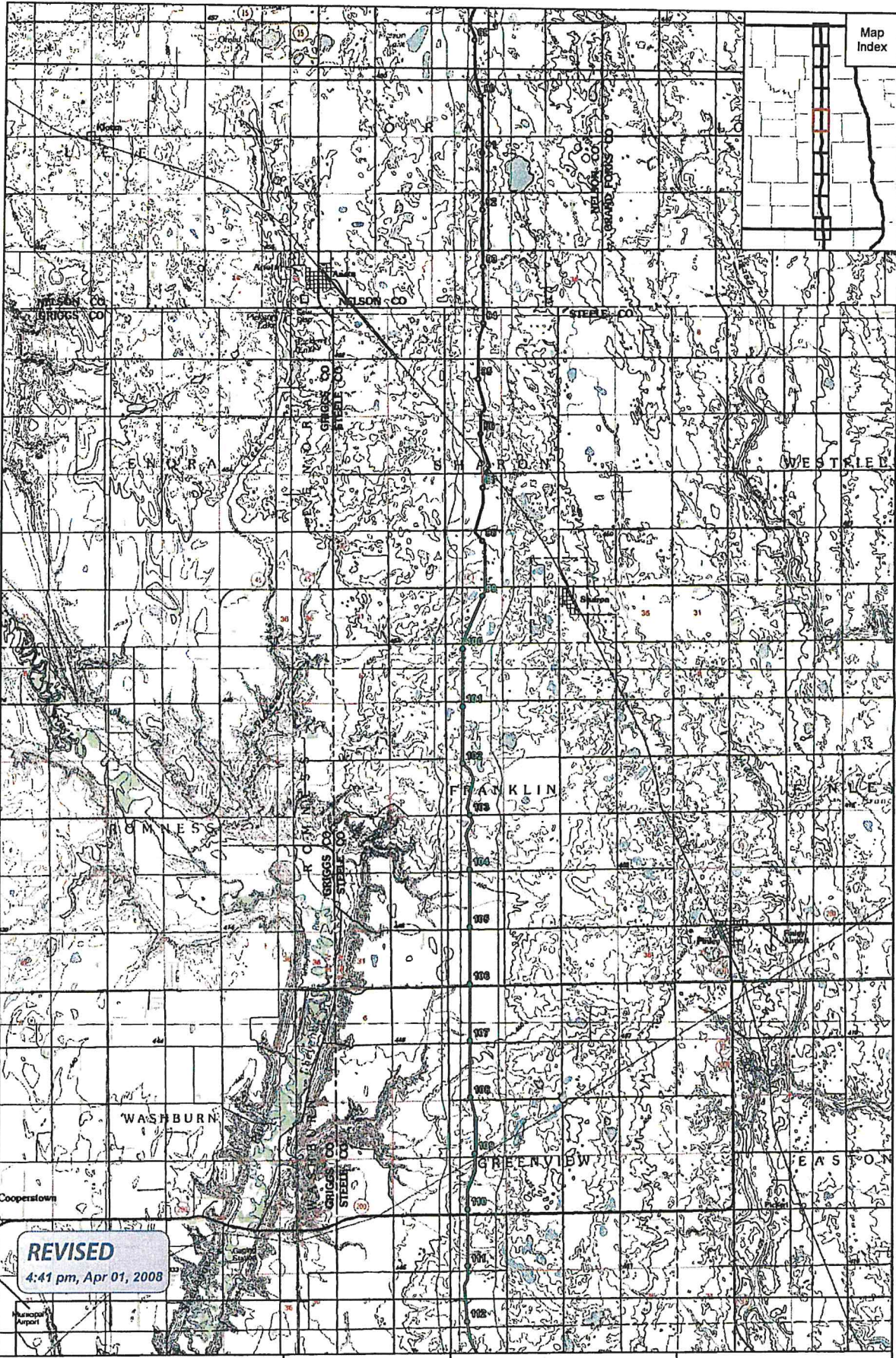
- Mileposts (March 13, 2008)
- Proposed Pipeline (March 13, 2008)
- ▭ Half-mile Buffer (March 13, 2008)
- ▭ Proposed Pipeline (March 2, 2007)



Keystone Pipeline Project

TransCanada
In business to deliver

Map 4 of 10
General Project Location
Topographic Map (1:100,000 scale)
(North Dakota)



REVISED
4:41 pm, Apr 01, 2008

- Mileposts (March 13, 2008)
- Proposed Pipeline (March 13, 2008)
- ▭ Half-mile Buffer (March 13, 2008)
- ▭ Proposed Pipeline (March 2, 2007)

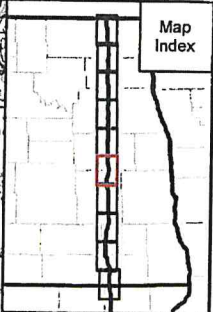
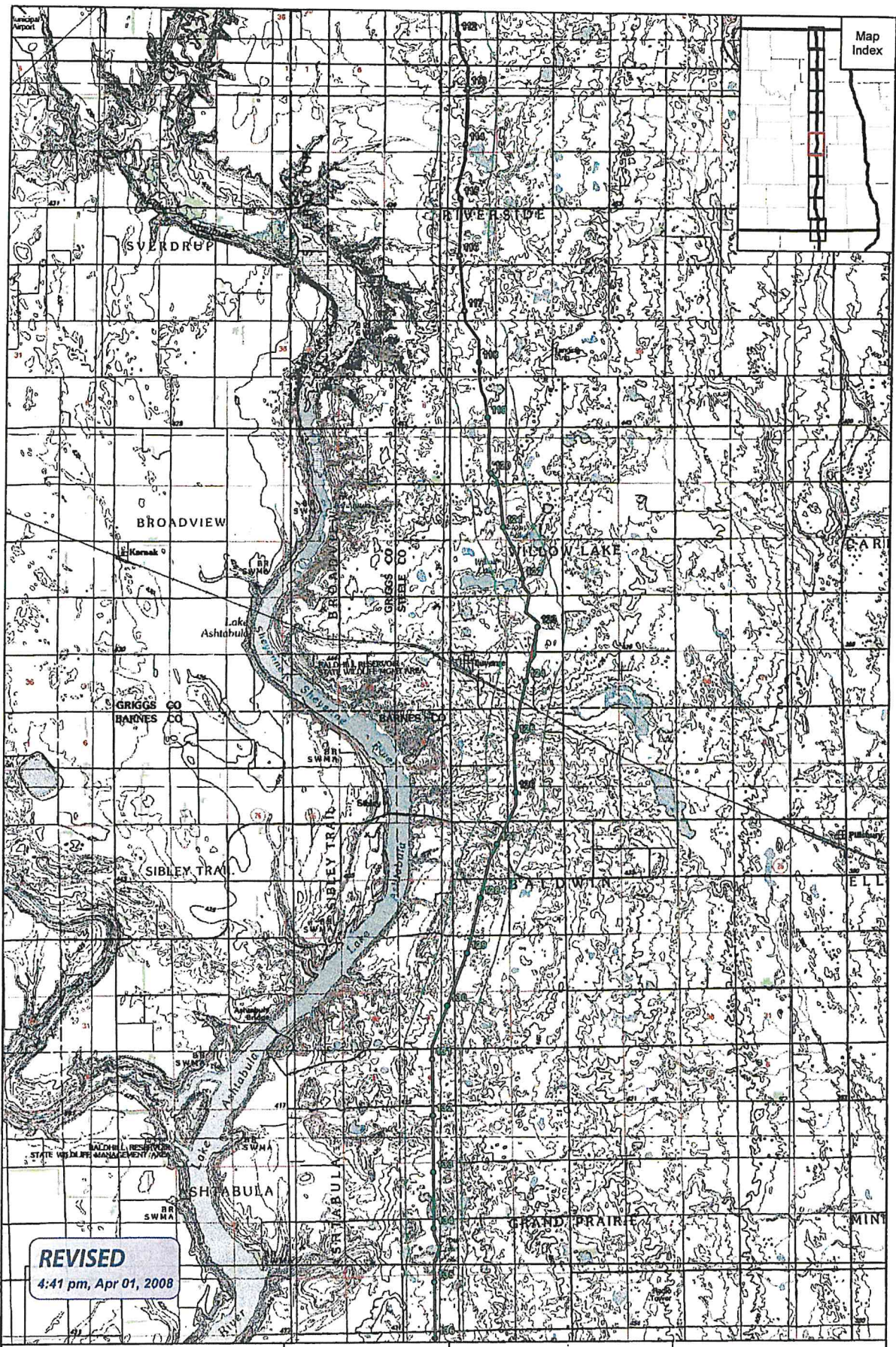


Keystone Pipeline Project

TransCanada
in business to deliver

Map 5 of 10
General Project Location
Topographic Map (1:100,000 scale)
(North Dakota)

© 2008 TransCanada Pipelines Inc. All rights reserved. This map is a reproduction of the original map and is not to be used for any other purpose without the express written consent of TransCanada Pipelines Inc.



REVISED
4:41 pm, Apr 01, 2008

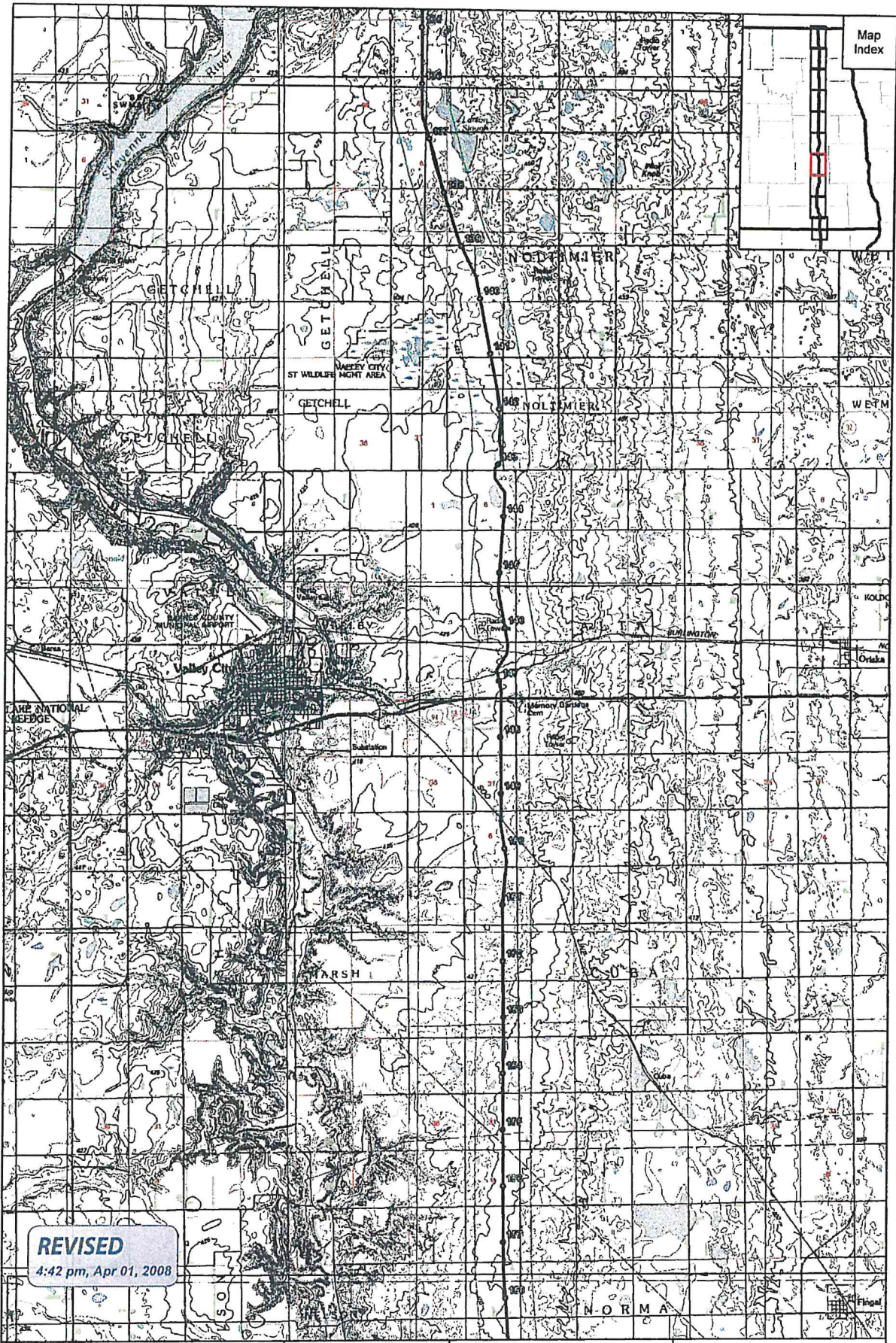
- Mileposts (March 13, 2008)
- Proposed Pipeline (March 13, 2008)
- Half-mile Buffer (March 13, 2008)
- Proposed Pipeline (March 2, 2007)



Keystone Pipeline Project
 **TransCanada**
in business to deliver

Map 6 of 10
 General Project Location
 Topographic Map (1:100,000 scale)
 (North Dakota)

© 2008 TransCanada Corporation. All rights reserved. This map is a reproduction of a map published by the U.S. Geological Survey.



REVISED
4:42 pm, Apr 01, 2008

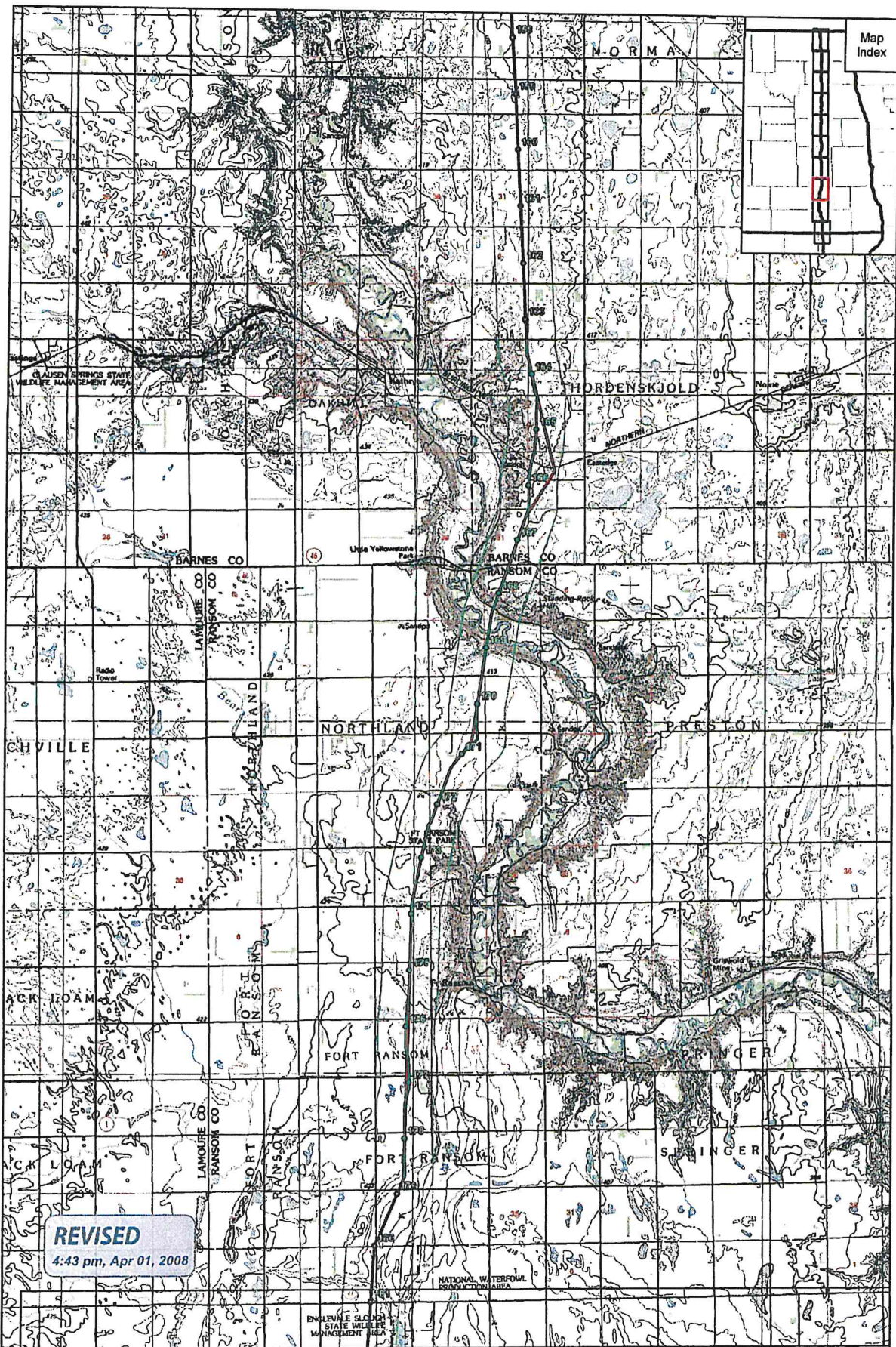
- Mileposts (March 13, 2008)
- Proposed Pipeline (March 13, 2008)
- ▭ Half-mile Buffer (March 13, 2008)
- ▭ Proposed Pipeline (March 2, 2007)



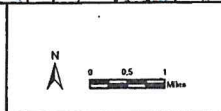
Keystone Pipeline Project
 **TransCanada**
In business to deliver

Map 7 of 10
 General Project Location
 Topographic Map (1:100,000 scale)
 (North Dakota)

© 2008 TransCanada Corporation. All rights reserved. This map is a reproduction of a topographic map published by the U.S. Geological Survey. The U.S. Government is authorized to reproduce and distribute reprints for government purposes not withstanding any copyright notation that may appear hereon.



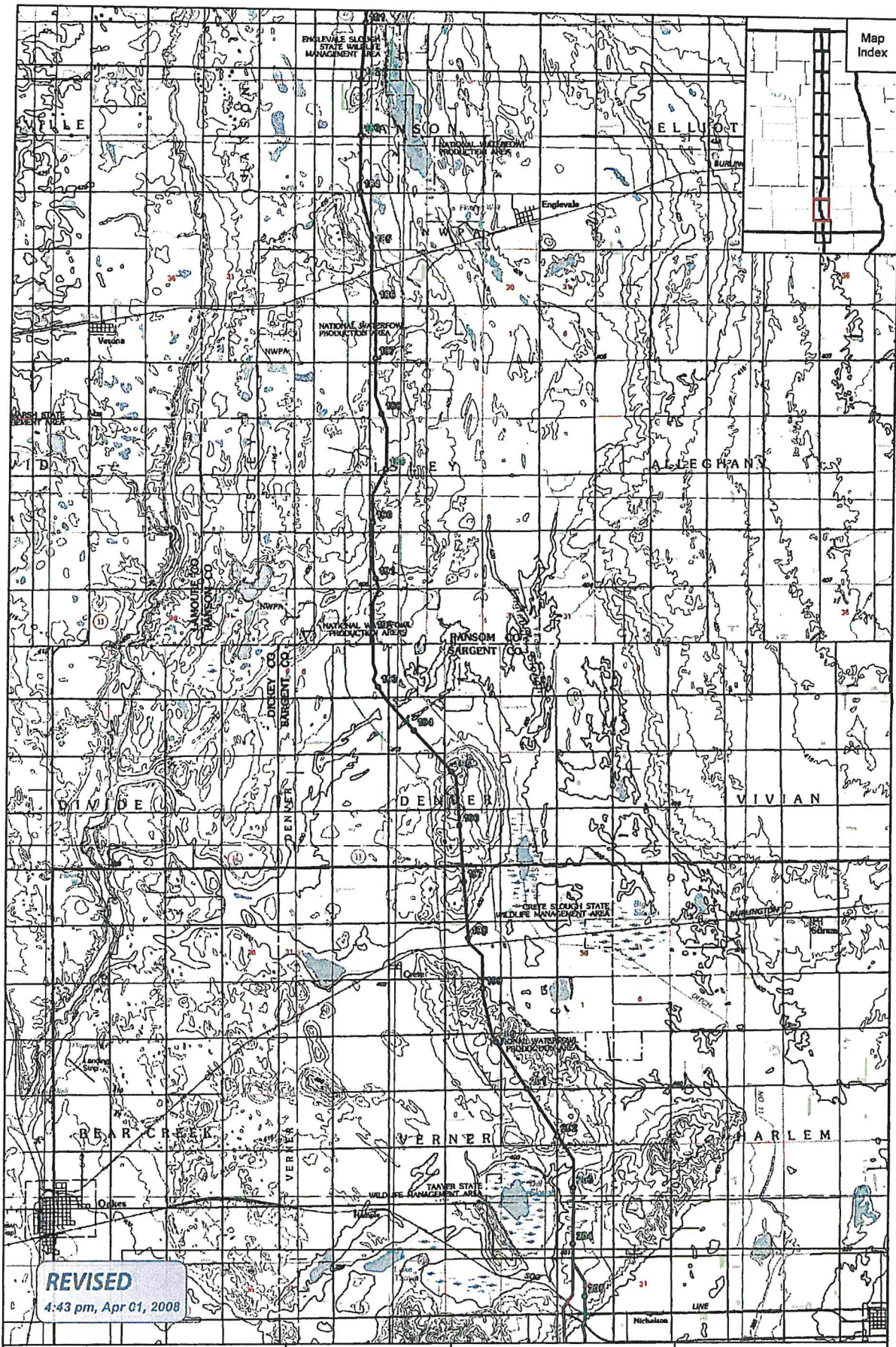
- Mileposts (March 13, 2008)
- Proposed Pipeline (March 13, 2008)
- Half-mile Buffer (March 13, 2008)
- Proposed Pipeline (March 2, 2007)



Keystone Pipeline Project

TransCanada
In business to deliver

Map 8 of 10
General Project Location
Topographic Map (1:100,000 scale)
(North Dakota)



REVISED
4:43 pm, Apr 01, 2008

- Mileposts (March 13, 2008)
- Proposed Pipeline (March 13, 2008)
- - - Half-mile Buffer (March 13, 2008)
- Proposed Pipeline (March 2, 2007)

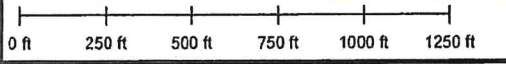


Keystone Pipeline Project
 **TransCanada**
In business to deliver

Map 9 of 10
 General Project Location
 Topographic Map (1:100,000 scale)
 (North Dakota)



JAMES BELANUS - TERESA BELANUS



TROW ENGINEERING CONSULTANTS INC.
 1300 Metropolitan Blvd. Suite 200
 Tallahassee, Florida 32308
 Phone: 1-850-385-5441
 Fax: 1-850-385-5523



TROW PROJ. No.: THES0050368S
 DRAWN BY: TB
 CHECKED BY: SS
 DATE: APRIL 28, 2008

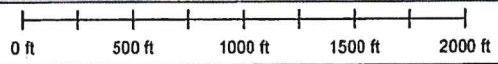
KEYSTONE PIPELINE PROJECT
 ROUTE VARIATION: 354-ND-4.6-5.1-S
 DRAWING No.: ND-354-1
 REV. 0





MARGARET BETTENDORF

DEBRA LETKEMAN

RANDY CARIGNAN - ROGER CARIGNAN - ROBERT MEECE

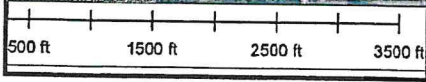


D HOOEY

 TransCanada <i>In business to deliver</i>		TROW ENGINEERING CONSULTANTS INC. 1300 Metropolitan Blvd, Suite 200 Tallahassee, Florida 32308 Phone: 1-850-385-8441 Fax: 1-850-383-5523		
		KEYSTONE PIPELINE PROJECT ROUTE VARIATION: 355-ND-14.1-15.2-5		
TROW PROJ. No.:	THES0050368S	DRAWING No.:	ND-355-1	REV.
DRAWN BY:	TB			0
CHECKED BY:	SS			
DATE:	APRIL 28, 2008			

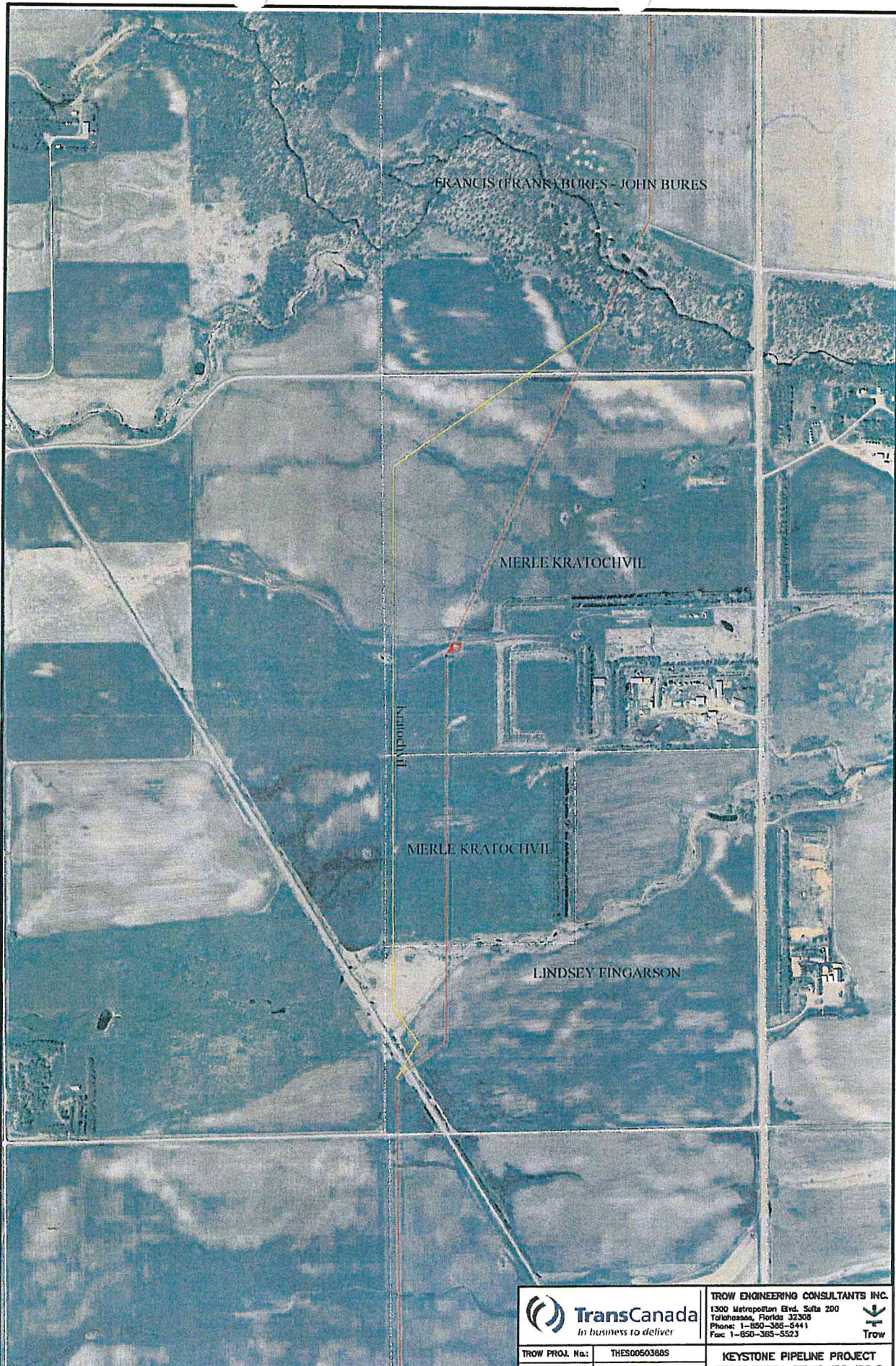


TROW ENGINEERING CONSULTANTS INC.
 1300 Metropolitan Blvd, Suite 200
 Tallahassee, Florida 32308
 Phone: 1-850-385-5441
 Fax: 1-850-385-5523



TROW PROJ. No.:	THES0050398S
DRAWN BY:	TB
CHECKED BY:	SS
DATE:	APRIL 28, 2008

KEYSTONE PIPELINE PROJECT	
ROUTE VARIATION: 356-ND-33.2-34.2-S	
DRAWING No.:	ND-356-1
REV.	0

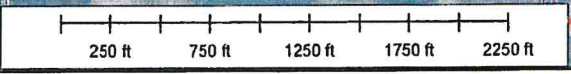


TROW ENGINEERING CONSULTANTS INC.
 1300 Metropolitan Blvd, Suite 200
 Tallahassee, Florida 32308
 Phone: 1-850-368-5441
 Fax: 1-850-368-5523



TROW PROJ. No.:	THES0060388S
DRAWN BY:	TB
CHECKED BY:	SS
DATE:	APRIL 28, 2008

KEYSTONE PIPELINE PROJECT	
ROUTE VARIATION: 357-NO-48.5-47.5-S	
DRAWING No.:	NO-357-1
REV.	0





GARY TRIEBOLD

HERBERT TRIEBOLD

HERBERT TRIEBOLD

JUNE AABYE - LYNEL SCHLEICHER - EARL SPEICHER -

BURLINGTON NORTHERN & SANTA FE RAILWAY COMPANY

ARLENE HOLM - CHARLOTTE HOLM - ROBERT HOLM

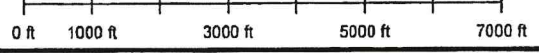
RAMONA KLEIN

RICHARD STARK

ISABELLA BERTRAM - WILLIAM BERTRAM - MARY SCHRA

SCHROEDER BROTHERS

M - WILLIAM



 TransCanada <i>In business to deliver</i>		TROW ENGINEERING CONSULTANTS INC. 1300 Metropolitan Blvd, Suite 200 Tallahassee, Florida 32308 Phone: 1-850-385-5441 Fax: 1-850-385-5523 	
TROW PROJ. No.:	THES0050396S	KEYSTONE PIPELINE PROJECT	
DRAWN BY:	TB	ROUTE VARIATION: KLEIN & STARK REROUTE	
CHECKED BY:	SS	DRAWING No.:	REV. 0
DATE:	APRIL 28, 2008	ND 358-1	

KEYSTONE PIPELINE PROJECT
 Revision 1 - North Dakota Route Variations Since Keystone's Application for Permit
 April 17, 2008

Route Variation Number	Begin MP	End MP	Drawing Number	Reason for Route Variation	Easement Acquired	Agency Concurrence	Comments
233-ND-39.2-40.5-S	39.2	40.5	ND-233-1	Increase clearance from 497 ft to 551 ft from Lenhardt Almen residence, eliminate clearing of shelter belt	Yes	N/A	
234-ND-67.2-68.9-S	67.2	68.9	ND-234-1	Landowner request (Kugler) shift alignment to west property line staying minimum of 60 ft east of tree drip line	Yes	N/A	
235-ND-96.4-97.2-S-rev1	96.4	97.2	ND-235-1-rev1	Rev1 of previous re-route for MP 96.4 to MP 97.5. Increase clearance from residence (Vog) from 176 ft to 501 ft	Yes	N/A	
236-ND-205.7-208.1-S	205.7	208.1	ND-236-1	Increase clearance off residence (Mathews) at MP 206.33 from 228 ft to 645 ft, and residence (Herminger) at MP 207.76 from 373 ft to 625 ft.	No	N/A	This route variation voided and replaced by route variation 336-ND-204.5-208.9-S per landowner request
239-XX-60.2-363.0-S	60.2	61.1	ND-239-1	This variation avoids USFW wetland easements after field surveys were conducted with the USFW.	Yes	Yes	
239-XX-60.2-363.0-S	92.5	93.1	ND-239-2	This variation avoids USFW wetland easements after field surveys were conducted with the USFW.	Yes	Yes	
239-XX-60.2-363.0-S	109.4	110.1	ND-239-3	This variation avoids USFW wetland easements after field surveys were conducted with the USFW.	Yes	Yes	
239-XX-60.2-363.0-S	137.3	138	ND-239-4	This variation avoids USFW wetland easements after field surveys were conducted with the USFW.	Yes	Yes	
239-XX-60.2-363.0-S	170.6	171.4	ND-239-5	This variation avoids USFW wetland easements after field surveys were conducted with the USFW.	Yes	Yes	
239-XX-60.2-363.0-S	175.7	177.6	ND-239-6	This variation avoids USFW wetland easements after field surveys were conducted with the USFW.	Yes	Yes	
240-ND-141.8-142.6-S	141.8	142.6	ND-240-1	Varation to avoid 500' clearance from residence (Wittenberg)	Yes	N/A	
245-XXXXXX-XXXX-S	16.7	15.7	ND-245-1	V-03 (mainline) Was moved off of HWY 5, 1 mile north to the north side of 50th St. New MP 15.7	Yes	N/A	
246-XXXXXX-XXXX-S	100.1	100.1	ND-246-1	Requested by TGPL to place a valve between pump station locations which do not contain intermediate valves, added V-55, MP 100.1, Sierle County, on south side of 12th St.	Yes	N/A	
260-XXXXXX-XXXX-S	5.7	8.1	ND-260-1	This variation accounts for adjustments to the centerline to accommodate an HDD Peninsula River. This variation removes P1 out of drill and places outback along ROW.	Yes	N/A	
267-ND-89.7-90.3-I	89.7	90.3	ND-267-1	Moved back to original alignment due to landowner (Larson) draining wetland, shorten length for less impact	Yes	N/A	
269-ND-164.6-167.0-S	164.6	167	ND-269-1	Landowner, Vaughn Zacharias, suggested route to avoid potential additional arch sites and to increase offset from residence	Yes	N/A	
270-ND-46.0-47.0-I	46	47	ND-270-1	Landowner Request to avoid burial mounds (Bures) moved back to original Sept 08 centerline	Partial	N/A	Landowner Kralovich to south Bures tract was not agreeable to original pipeline route nor to this route variation
276-ND-39.5-41.3-I	39.5	41.3	ND-276-1	Landowner request to avoid newly planted trees (Almen)	Yes	N/A	
276-ND-33.1-34.2-PS	33.1	34.2	ND-276-1	PS-10 This pump station was moved due to hydraulics and then on to a willing landowner. Associated pipeline reroute to accommodate pump station inlet and outlet	Yes	N/A	
277-ND-217.6-216.6-PS	217.6	216.6	ND-277-1	PS-19 The pump station was moved on to a willing landowner.	Yes	N/A	
279-ND-123.5-123.5-PS	123.5	123.5	ND-279-1	PS-17 Move off of two landowners on onto one landowner willing to sell five acres.	Yes	N/A	
280-ND-170.8-171.0-PS	170.9	171.0	ND-280-1	PS-18 Moved across the street. The landowner preferred pump station across the street.	Yes	N/A	
288-ND-76.2-76.0-PS	76.2	76.0	ND-288-1	PS-18 This pump station was moved due to wetlands residing within pump station footprint and to a location with a willing landowner. Associated pipeline reroute to accommodate pump station inlet and outlet.	Yes	N/A	
291-ND-176.5-177.5-I	176.5	177.5	ND-291-1	Landowner (Laut) has requested keystone move at least 500' away from the drive yard located near to his property.	Yes	N/A	
300-XX-XXX-XXX-I	41.4	41.8	ND-300-1	Accommodate HDD design. The centerline was extended north of the entry point in order to move entry further north of river. This will accommodate additional depth determined from scour analysis.	Yes	N/A	
309-XX-XXX-XXX-S	19.5	19.6	ND-309-1	Valve was relocated from private drive to north-south 127th ave	Yes	N/A	
309-XX-XXX-XXX-S	49.7	49.7	ND-309-2	Relocated Valve V-47 off of condemnation track from south side of east-west 61st Street NE to north side	Yes	N/A	
309-XX-XXX-XXX-S	185.2	185.9	ND-309-3	This Route Variation shifts the location of valve V-07 to a location where the Red River County requirement of 100 ft clearance is in compliance.	Yes	N/A	
309-XX-XXX-XXX-S	203.4	202.4	ND-309-4	Current location of Valve V-61 at dirt 2 track road, therefore all season access is not provided. Relocated site at a high point including additional drainage areas to large lake to southwest and provide all season access.	Yes	N/A	
315-ND-131.0-131.0-S	131.0	131.0	ND-315-1	Per a settlement with the City of Fargo during the North Dakota PSC hearings, an additional check valve will be placed near the Lake Arshabuta area	Yes	N/A	
320-ND-163.6-165.0-I	163.9	165.0	ND-320-1	Reroute to move the pipeline ROW and workspace out of a cultural site. (A-MACA-ND-BA-02)	Yes	N/A	
321-ND-41.3-41.6-rev1	41.3	41.4	ND-321-1-rev1	Reroute to move the pipeline ROW and workspace out of a cultural site. Revision to 321, kept reroute on one landowner. (A-MACA-ND-BA-01)	Yes	N/A	
327-ND-142.0-142.7-S-rev1	142.1	142.4	ND-327-1-rev1	Revision to 327-ND-142.0-142.7-S which moves route to a 425' offset from Whittenberg residence in order to accommodate condition of signed waiver	Yes	N/A	
330-ND-18.1-18.8-S	18.1	18.8	ND-330-1	This variation is to account for an added HDD at the Tengus River crossing	Yes	N/A	
331-XX-XXX-XXX-I	23.65	23.77	ND-331-1	This route variation contains multiple minor variations which avoid obstructions and also reroutes to revise stream crossings after results from the stream scour and migration analysis	Yes	N/A	
331-XX-XXX-XXX-I	29.25	29.62	ND-331-2	Revised stream crossing to minimize crossing length	Yes	N/A	
331-XX-XXX-XXX-I	31.00	31.12	ND-331-3	Revised North Branch Park River crossing to minimize scour and stream migration issues	Yes	N/A	
331-XX-XXX-XXX-I	31.74	31.67	ND-331-4	Revised stream crossing to minimize crossing length and avoid structure @ MP 31.04	Yes	N/A	
331-XX-XXX-XXX-I	34.28	34.46	ND-331-5	Revised stream crossing to minimize crossing length	Yes	N/A	
331-XX-XXX-XXX-I	35.21	35.45	ND-331-6	Avoid grade bin	Yes	N/A	
331-XX-XXX-XXX-I	49.95	50.12	ND-331-7	Revised stream crossing to minimize crossing length	No	N/A	Landowner Capp was not agreeable to original pipeline route nor to this route variation.
331-XX-XXX-XXX-I	54.69	54.81	ND-331-8	Revised stream crossing to minimize crossing length	Yes	N/A	
331-XX-XXX-XXX-I	62.69	62.67	ND-331-9	Revised Middle Branch Forest River crossing to minimize scour and stream migration issues	Yes	N/A	
331-XX-XXX-XXX-I	85.83	86.84	ND-331-10	Revised stream crossing to minimize crossing length	Yes	N/A	
331-XX-XXX-XXX-I	109.06	108.43	ND-331-11	Eliminate V-17-02-06 side bend at MP 86.3	Yes	N/A	
331-XX-XXX-XXX-I	153.21	153.93	ND-331-12	Avoid power poles and guy wires	Yes	N/A	
335-ND-180.1-180.1-I	180.1	180.1	ND-335-1	Avoid power transmission line tower	Yes	N/A	
336-ND-204.5-208.9-S	204.5	208.9	ND-336-1	ND Township Chairman has indicated that 5 landowners would sign if alignment shifted east to 144 section line	Pending	N/A	Three of the five landowners have signed easements. Mr. Mathews, the landowner who demanded the reroute, has not agreed to sign at this time.
341-ND-185.9-186.1-I	185.9	186.1	ND-341-1	Relocated Valve Site V-07 so that access road could be constructed in permanent easement north of 72nd Street	Yes	N/A	

