

Legend

- MILE POST
- KEYSTONE PIPELINE - 6.23.08 CL
- ▭ COUNTY LINE
- ▭ TOWNSHIP-RANGE-SECTION LINE
- ▭ CONSTRUCTION SPREAD BREAK
- SHELTER BELTS

CANADA	U.S.A.										
	Pembina County	Walsh County	Grand Forks County	Steele County	Cass County	Ransom County	Sargent County	Marshall County	Barnes County	Dickey County	Brown County
	ND							SD			
	Cavalier County	Ramsey County	Nelson County	Griggs County		LaMoure County					

PREPARED BY:
TROW ENGINEERING CONSULTANTS INC.
 1300 Metropolitan Boulevard, Suite 200
 Tallahassee, Florida, USA 32308
 Phone: 1-850-385-5441
 Fax: 1-850-385-5523

Trow

NO.	REVISION	DATE

PRELIMINARY

Drawn By: GS	Checked By: SS	Approved By: RG	Project: 50388S
--------------	----------------	-----------------	-----------------

TransCanada
In business to deliver

KEYSTONE PIPELINE PROJECT
 SPREAD 2A ROUTE SHEETS
 BARNES COUNTY, NORTH DAKOTA

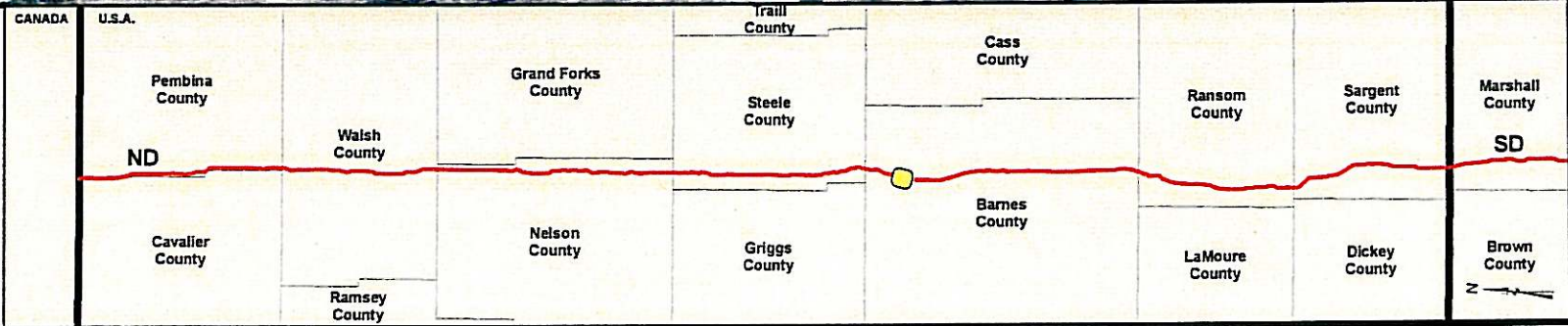
MAP PARAMETERS
 PROJECTION: NAD83, UTM:14N
 SCALE: 1: 6000 ; 1" = 500'

DRAWING NUMBER	SHEET	REV.
K-38-ML-9040-P- 01 -A	01	0



Legend

- MILE POST
- KEYSTONE PIPELINE - 6.23.08 CL
- ▭ COUNTY LINE
- ▭ TOWNSHIP-RANGE-SECTION LINE
- ▭ CONSTRUCTION SPREAD BREAK
- SHELTER BELTS



PREPARED BY:
TROW ENGINEERING CONSULTANTS INC.
 1300 Metropolitan Boulevard, Suite 200
 Tallahassee, Florida, USA 32308
 Phone: 1-850-385-5441
 Fax: 1-850-385-5523

Trow

NO.	REVISION	DATE

AMDEVI Submitted to ND PSC June 24, 2008 6.23.08

DRAWN BY	CHECKED BY	APPROVED BY	PROJECT
GS	SS	RG	50388S

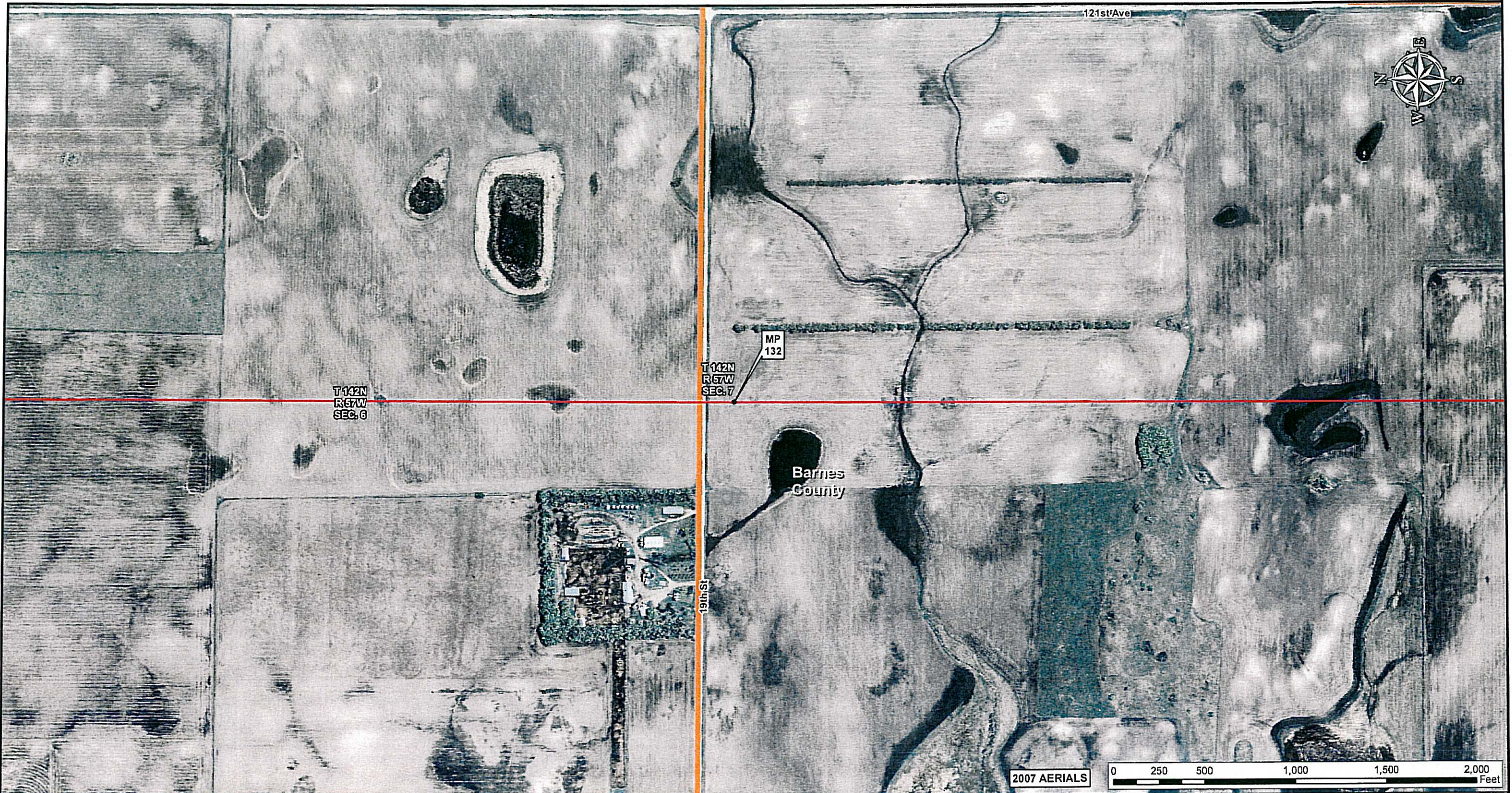
TransCanada
In business to deliver

KEYSTONE PIPELINE PROJECT
SPREAD 2A ROUTE SHEETS
 BARNES COUNTY, NORTH DAKOTA

MAP PARAMETERS
 PROJECTION: NAD83, UTM:14N
 SCALE: 1: 6000 ; 1" = 500'

DRAWING NUMBER	SHEET	REV.
K-38-ML-9040-P-02 -A	02	0





Legend

- MILE POST
- KEYSTONE PIPELINE - 6.23.08 CL
- ▭ COUNTY LINE
- ▭ TOWNSHIP-RANGE-SECTION LINE
- ▭ CONSTRUCTION SPREAD BREAK
- SHELTER BELTS

CANADA	U.S.A.									
	Pembina County	Walsh County	Grand Forks County	Steele County	Cass County	Ransom County	Sargent County	Marshall County		
	ND							SD		
	Cavaller County	Ramsey County	Nelson County	Griggs County	Barnes County	LaMoure County	Dickey County	Brown County		

PREPARED BY:
TROW ENGINEERING CONSULTANTS INC.
 1300 Metropolitan Boulevard, Suite 200
 Tallahassee, Florida, USA 32308
 Phone: 1-850-385-5441
 Fax: 1-850-385-5523

Trow

NO.	REVISION	DATE

6.23.08
 Affidavit Submitted to ND PSC June 24, 2008

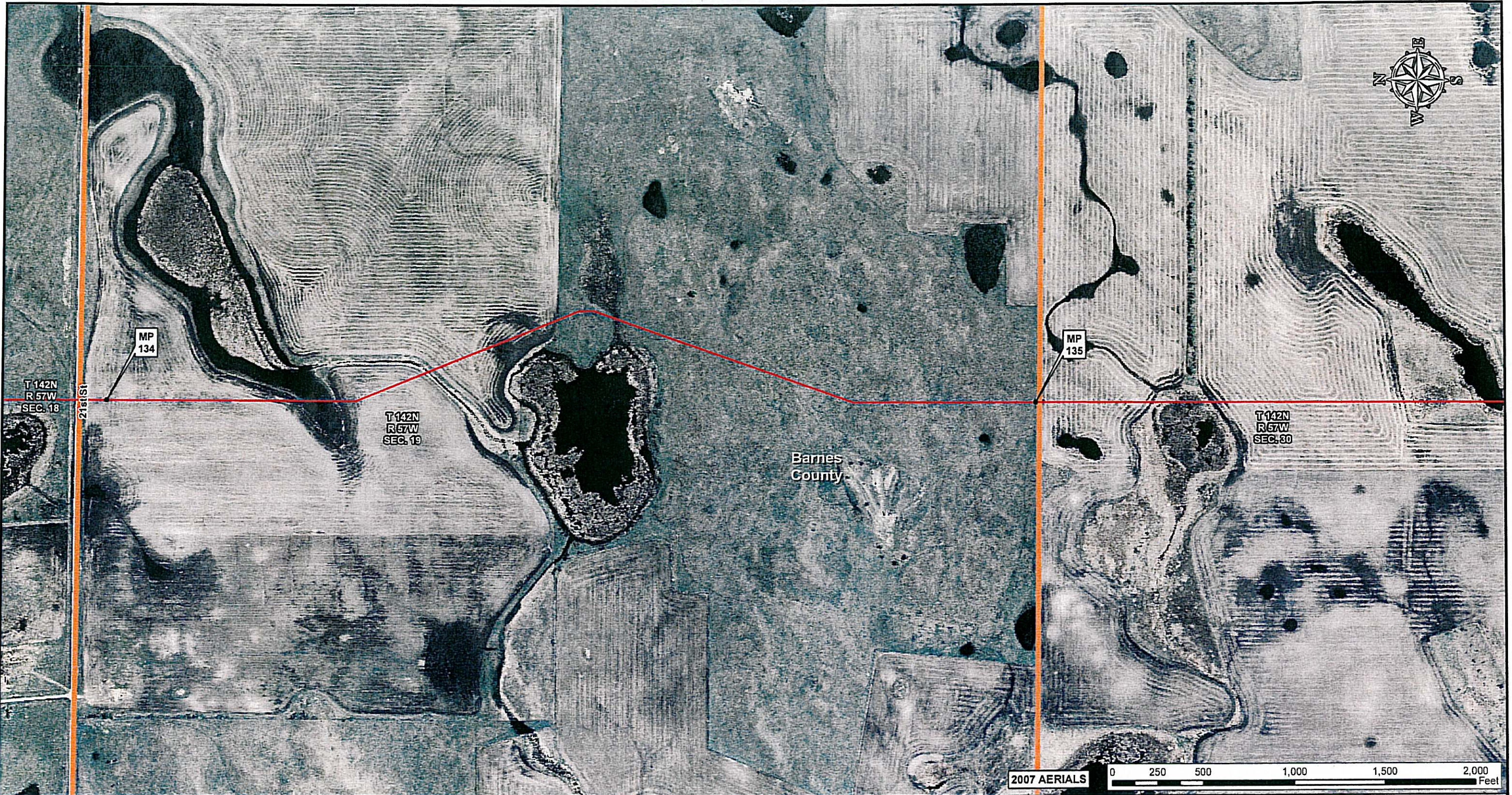
DRAWN BY	CHECKED BY	APPROVED BY	PROJECT:
GS	SS	RG	50388S

TransCanada
In business to deliver

KEYSTONE PIPELINE PROJECT
 SPREAD 2A ROUTE SHEETS
 BARNES COUNTY, NORTH DAKOTA

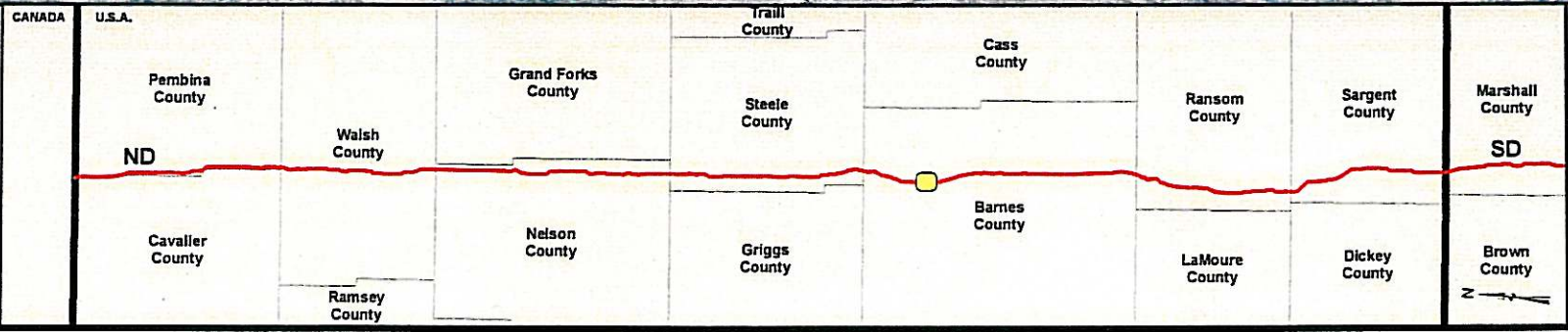
MAP PARAMETERS
 PROJECTION: NAD83, UTM:14N
 SCALE: 1: 6000 ; 1" = 500'

DRAWING NUMBER	SHEET	REV.
K-38-ML-9040-P-03 -A	03	0



Legend

- MILE POST
- KEYSTONE PIPELINE - 6.23.08 CL
- ▭ COUNTY LINE
- ▭ TOWNSHIP-RANGE-SECTION LINE
- ▭ CONSTRUCTION SPREAD BREAK
- SHELTER BELTS



PREPARED BY:
TROW ENGINEERING CONSULTANTS INC.
 1300 Metropolitan Boulevard, Suite 200
 Tallahassee, Florida, USA 32308
 Phone: 1-850-385-5441
 Fax: 1-850-385-5523

Trow

NO.	REVISION	DATE
PRELIMINARY		
e Affidavit Submitted to ND PSC June 24, 2008		6.23.08
DRAWN BY	CHECKED BY	APPROVED BY
GS	SS	RG
PROJECT:		DRAWING NUMBER
50388S		K-38-ML-9040-P-05 -A
SHEET		REV.
05		0

TransCanada
In business to deliver

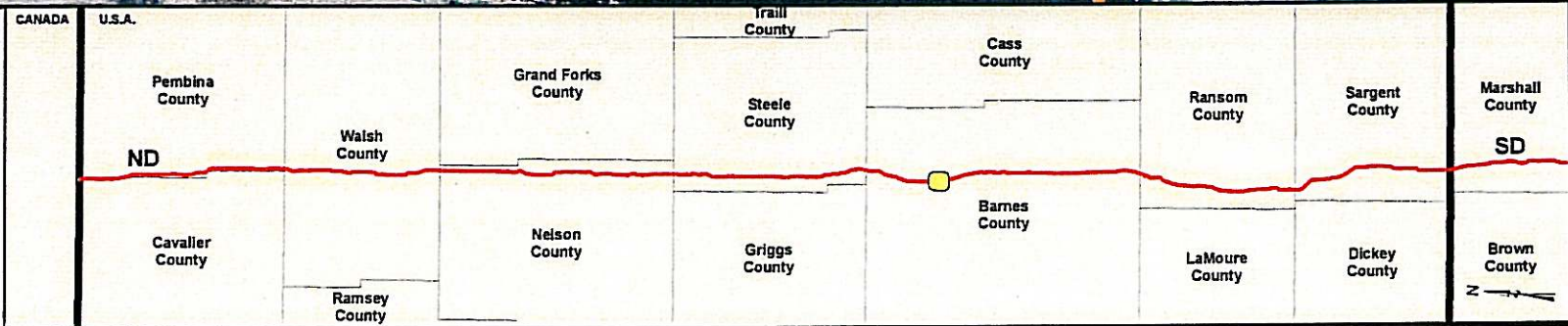
KEYSTONE PIPELINE PROJECT
 SPREAD 2A ROUTE SHEETS
 BARNES COUNTY, NORTH DAKOTA

MAP PARAMETERS
 PROJECTION: NAD83, UTM: 14N
 SCALE: 1: 6000 ; 1" = 500'



Legend

- MILE POST
- KEYSTONE PIPELINE - 6.23.08 CL
- ▭ COUNTY LINE
- ▭ TOWNSHIP-RANGE-SECTION LINE
- ▭ CONSTRUCTION SPREAD BREAK
- SHELTER BELTS



PREPARED BY:
TROW ENGINEERING CONSULTANTS INC.
 1300 Metropolitan Boulevard, Suite 200
 Tallahassee, Florida, USA 32308
 Phone: 1-850-385-5441
 Fax: 1-850-385-5523

Trow

NO.	REVISION	DATE
0	As Issued Submitted to ND PSC June 24, 2008	6.23.08

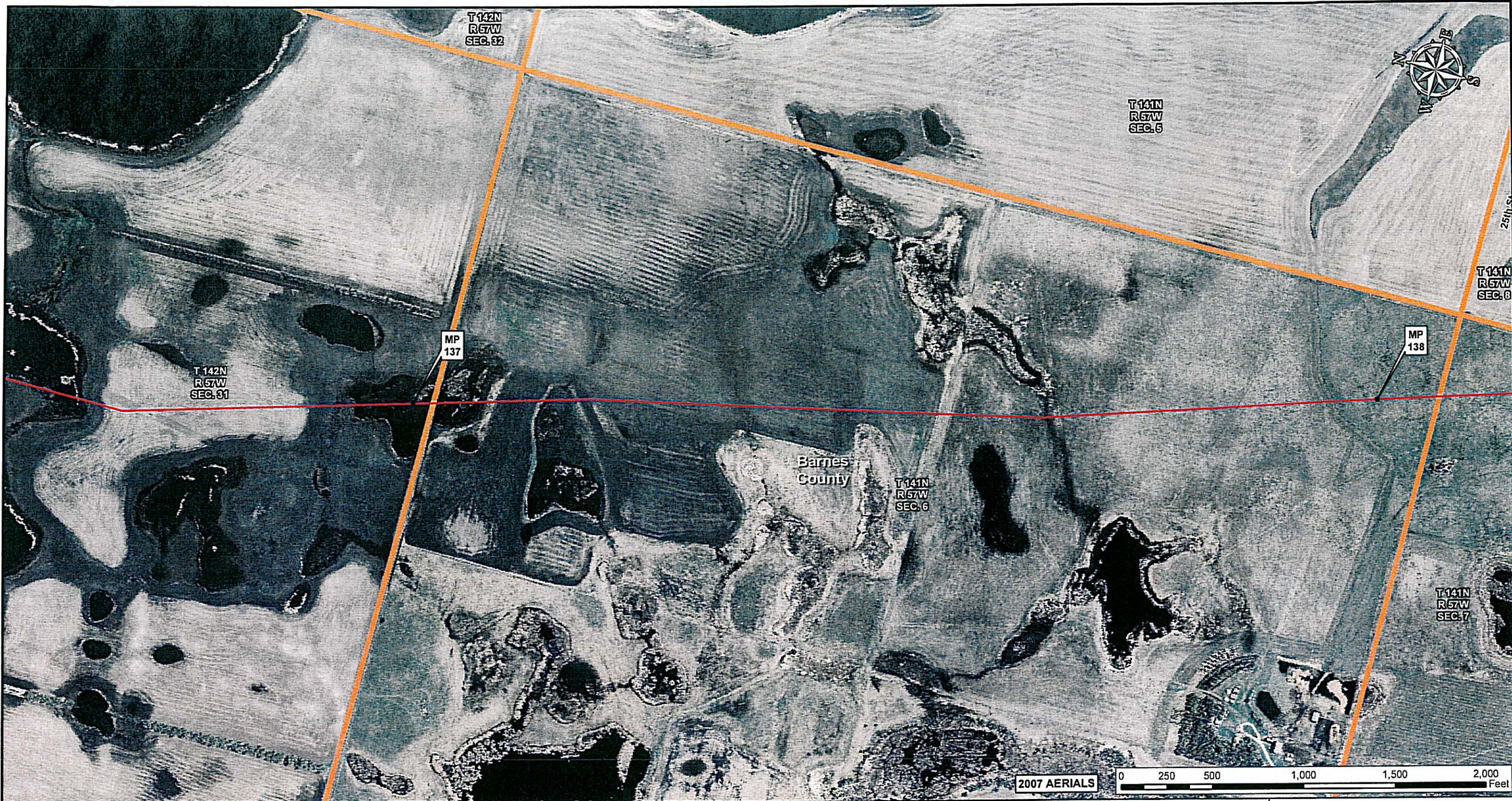
DRAWN BY: GS
 CHECKED BY: SS
 APPROVED BY: RG
 PROJECT: 50388S

TransCanada
In business to deliver

KEYSTONE PIPELINE PROJECT
 SPREAD 2A ROUTE SHEETS
 BARNES COUNTY, NORTH DAKOTA

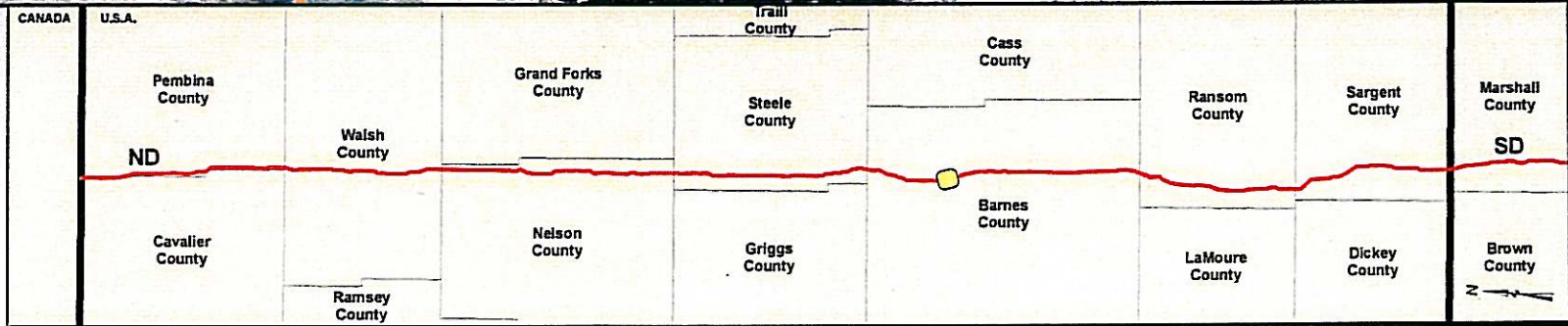
MAP PARAMETERS
 PROJECTION: NAD83, UTM:14N
 SCALE: 1: 6000 ; 1" = 500'

DRAWING NUMBER	SHEET	REV.
K-38-ML-9040-P-06 -A	06	0



Legend

- MILE POST
- KEYSTONE PIPELINE - 6.23.08 CL
- ▭ COUNTY LINE
- ▭ TOWNSHIP-RANGE-SECTION LINE
- ▭ CONSTRUCTION SPREAD BREAK
- SHELTER BELTS



PREPARED BY:
TROW ENGINEERING CONSULTANTS INC.
 1300 Metropolitan Boulevard, Suite 200
 Tallahassee, Florida, USA 32308
 Phone: 1-850-385-5441
 Fax: 1-850-385-5523

Trow

NO.	REVISION	DATE
0	Affidavit Submitted to ND PSC June 24, 2008	6.23.08

DRAWN BY: GS CHECKED BY: SS APPROVED BY: RG PROJECT: 50388S

TransCanada
In business to deliver

KEYSTONE PIPELINE PROJECT
SPREAD 2A ROUTE SHEETS
BARNES COUNTY, NORTH DAKOTA

MAP PARAMETERS
 PROJECTION: NAD83, UTM:14N
 SCALE: 1: 6000 ; 1" = 500'

DRAWING NUMBER	SHEET	REV.
K-38-ML-9040-P-07 -A	07	0



Legend

- MILE POST
- KEYSTONE PIPELINE - 6.23.08 CL
- ▭ COUNTY LINE
- ▭ TOWNSHIP-RANGE-SECTION LINE
- ▭ CONSTRUCTION SPREAD BREAK
- SHELTER BELTS

CANADA	U.S.A.									
	Pembina County	Walsh County	Grand Forks County	Trail County	Cass County	Ransom County	Sargent County	Marshall County		
ND				Steele County				SD		
	Cavalier County		Nelson County	Griggs County	Barnes County	LaMoure County	Dickey County			
		Ramsey County						Brown County		

PREPARED BY:
TROW ENGINEERING CONSULTANTS INC.
 1300 Metropolitan Boulevard, Suite 200
 Tallahassee, Florida, USA 32308
 Phone: 1-850-385-5441
 Fax: 1-850-385-5523

Trow

NO.	REVISION	DATE

0 Affidavit Submitted to ND PSC June 24, 2008 6.23.08

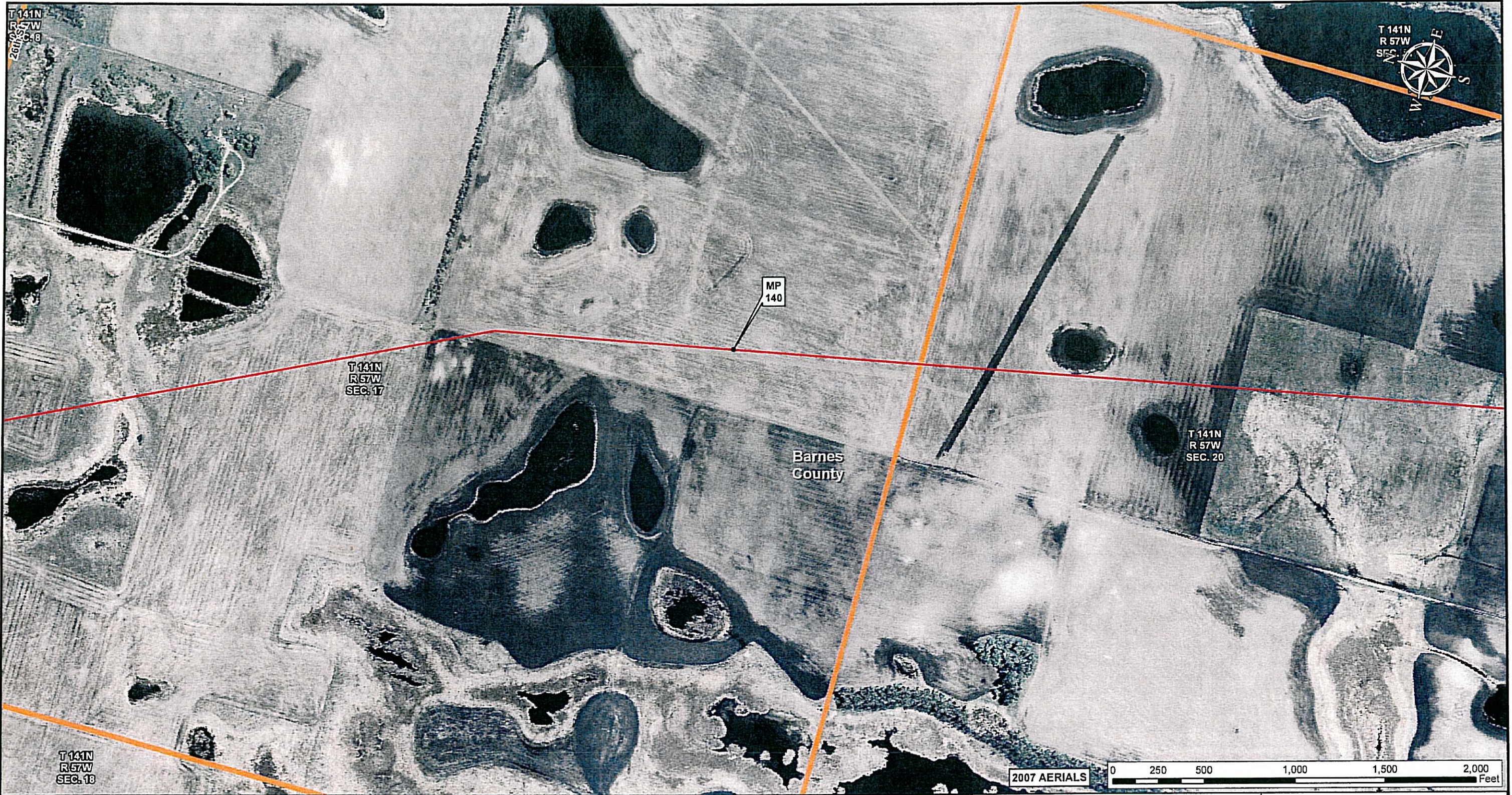
DRAWN BY	CHECKED BY	APPROVED BY	PROJECT
GS	SS	RG	50388S

TransCanada
In business to deliver

KEYSTONE PIPELINE PROJECT
 SPREAD 2A ROUTE SHEETS
 BARNES COUNTY, NORTH DAKOTA

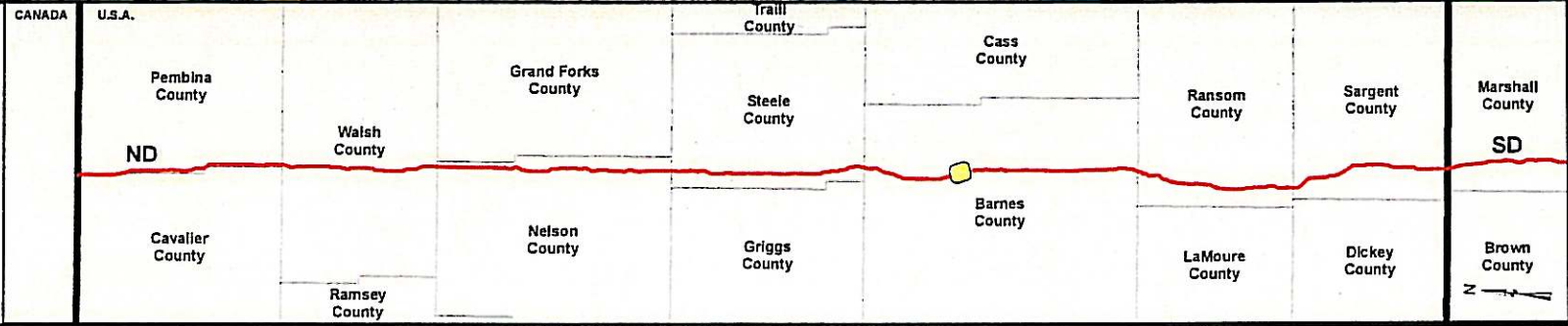
MAP PARAMETERS
 PROJECTION: NAD83, UTM: 14N
 SCALE: 1: 6000 ; 1" = 500'

DRAWING NUMBER	SHEET	REV.
K-38-ML-9040-P- 08 -A	08	0



Legend

- MILE POST
- KEYSTONE PIPELINE - 6.23.08 CL
- ▭ COUNTY LINE
- ▭ TOWNSHIP-RANGE-SECTION LINE
- ▭ CONSTRUCTION SPREAD BREAK
- SHELTER BELTS



PREPARED BY:
TROW ENGINEERING CONSULTANTS INC.
 1300 Metropolitan Boulevard, Suite 200
 Tallahassee, Florida, USA 32308
 Phone: 1-850-385-5441
 Fax: 1-850-385-5523

NO.	REVISION	DATE
0	As-drawn Submitted to ND PSC June 24, 2008	6.23.08

DRAWN BY: GS CHECKED BY: SS APPROVED BY: RG PROJECT: 50388S

TransCanada
In business to deliver

KEYSTONE PIPELINE PROJECT
 SPREAD 2A ROUTE SHEETS
 BARNES COUNTY, NORTH DAKOTA

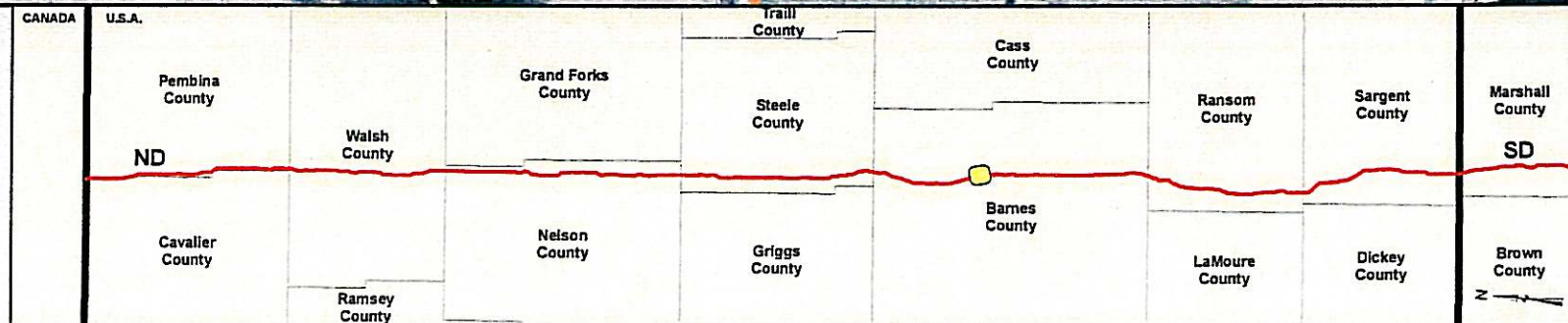
MAP PARAMETERS
 PROJECTION: NAD83, UTM: 14N
 SCALE: 1: 6000 ; 1" = 500'

DRAWING NUMBER	SHEET	REV.
K-38-ML-9040-P- 09 -A	09	0



Legend

- MILE POST
- KEYSTONE PIPELINE - 6.23.08 CL
- ▭ COUNTY LINE
- ▭ TOWNSHIP-RANGE-SECTION LINE
- ▭ CONSTRUCTION SPREAD BREAK
- SHELTER BELTS



PREPARED BY:
TROW ENGINEERING CONSULTANTS INC.
 1300 Metropolitan Boulevard, Suite 200
 Tallahassee, Florida, USA 32308
 Phone: 1-850-385-5441
 Fax: 1-850-385-5523

Trow

NO.	REVISION	DATE

PRELIMINARY

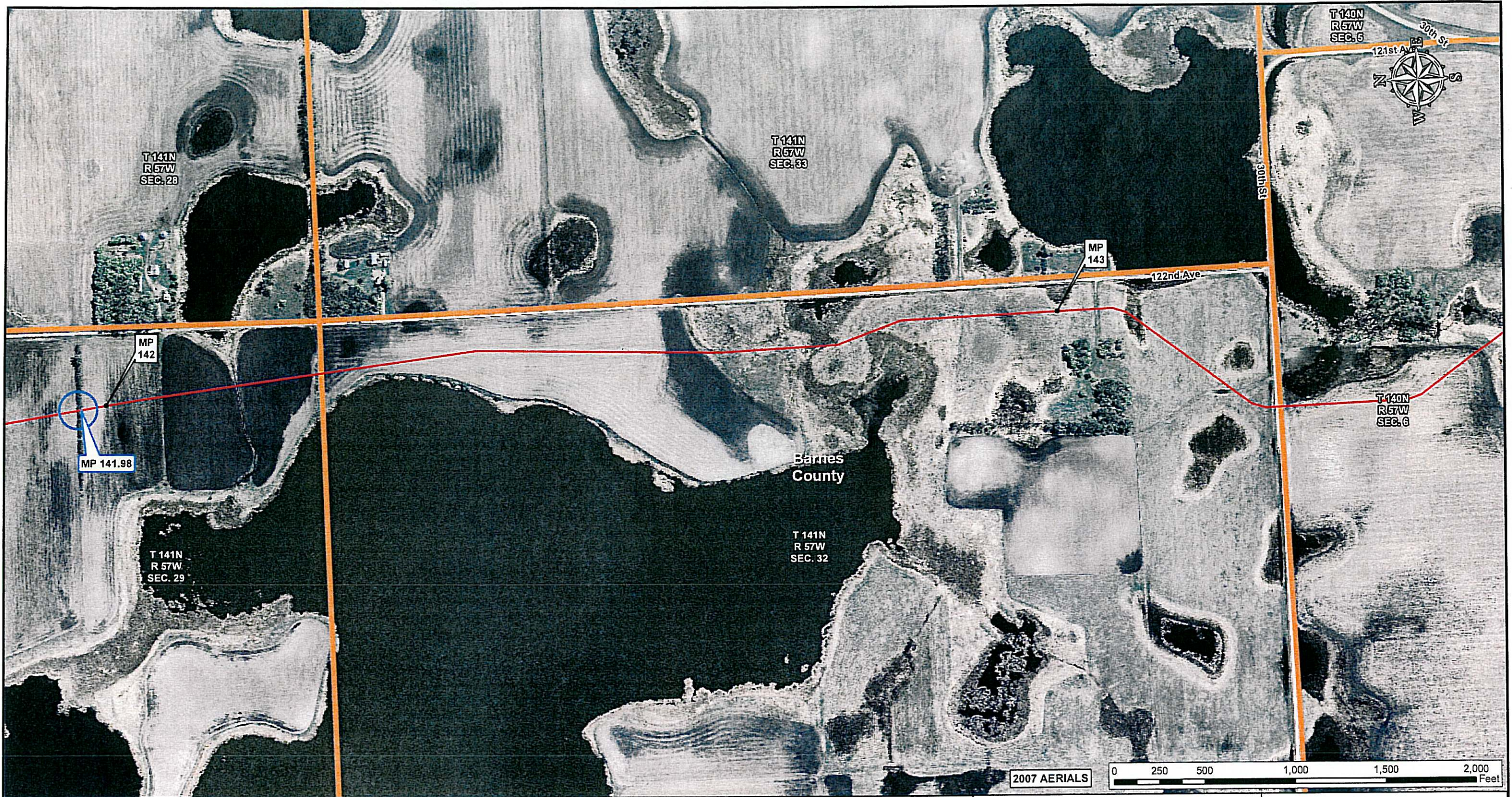
DRAWN BY	CHECKED BY	APPROVED BY	PROJECT:
GS	SS	RG	50388S

TransCanada
in business to deliver

KEYSTONE PIPELINE PROJECT
 SPREAD 2A ROUTE SHEETS
 BARNES COUNTY, NORTH DAKOTA

MAP PARAMETERS
 PROJECTION: NAD83, UTM:14N
 SCALE: 1: 6000 ; 1" = 500'

DRAWING NUMBER	SHEET	REV.
K-38-ML-9040-P-10 -A	10	0



Legend

- MILE POST
- KEYSTONE PIPELINE - 6.23.08 CL
- ▭ COUNTY LINE
- ▭ TOWNSHIP-RANGE-SECTION LINE
- ▭ CONSTRUCTION SPREAD BREAK
- SHELTER BELTS

CANADA	U.S.A.		Trail County		Cass County		Marshall County	
	Pembina County		Grand Forks County		Ransom County		Sargent County	
	Walsh County		Steele County		Barnes County		Brown County	
	Cavalier County		Nelson County		LaMoure County		Dickey County	
	Ramsey County		Griggs County					

PREPARED BY:
TROW ENGINEERING CONSULTANTS INC.
 1300 Metropolitan Boulevard, Suite 200
 Tallahassee, Florida, USA 32308
 Phone: 1-850-385-5441
 Fax: 1-850-385-5523

Trow

NO.	REVISION	DATE

AmSavit Submitted to ND PSC June 24, 2008

DRAWN BY	CHECKED BY	APPROVED BY	PROJECT
GS	SS	RG	50388S

TransCanada
In business to deliver

**KEYSTONE PIPELINE PROJECT
 SPREAD 2A ROUTE SHEETS
 BARNES COUNTY, NORTH DAKOTA**

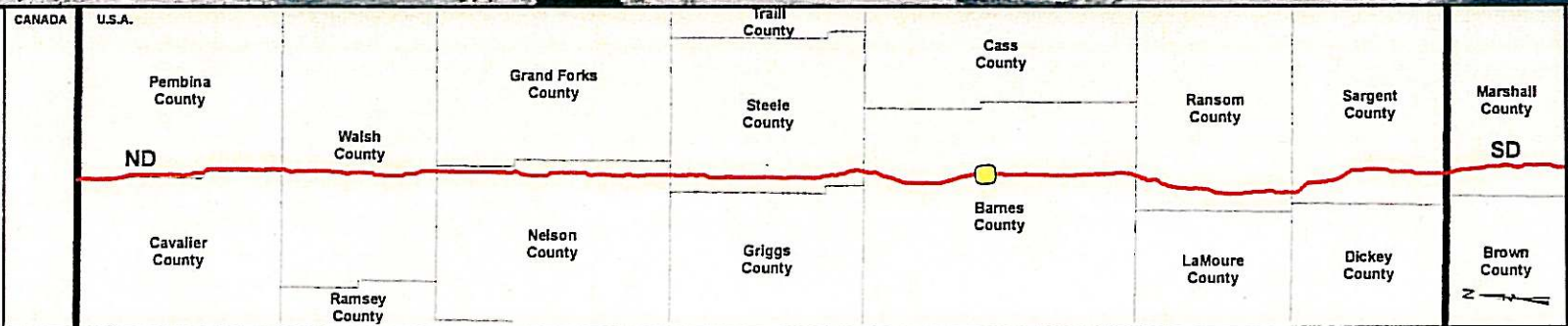
MAP PARAMETERS
 PROJECTION: NAD83, UTM:14N
 SCALE: 1: 6000 ; 1" = 500'

DRAWING NUMBER	SHEET	REV.
K-38-ML-9040-P-11 -A	11	0



Legend

- MILE POST
- KEYSTONE PIPELINE - 6.23.08 CL
- ▭ COUNTY LINE
- ▭ TOWNSHIP-RANGE-SECTION LINE
- ▭ CONSTRUCTION SPREAD BREAK
- SHELTER BELTS



PREPARED BY:
TROW ENGINEERING CONSULTANTS INC.
 1300 Metropolitan Boulevard, Suite 200
 Tallahassee, Florida, USA 32308
 Phone: 1-850-385-5441
 Fax: 1-850-385-5523

Trow

NO.	REVISION	DATE

PRELIMINARY

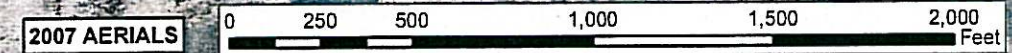
DRAWN BY	CHECKED BY	APPROVED BY	PROJECT	DRAWING NUMBER	SHEET	REV.
GS	SS	RG	50388S	K-38-ML-9040-P-12 -A	12	0

TransCanada
In business to deliver

KEYSTONE PIPELINE PROJECT
SPREAD 2A ROUTE SHEETS
BARNES COUNTY, NORTH DAKOTA

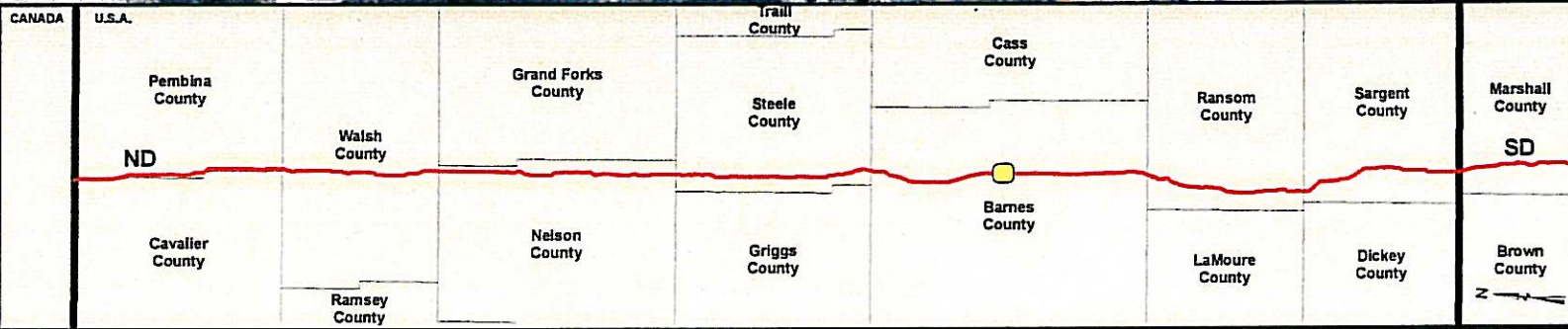
MAP PARAMETERS
 PROJECTION: NAD83, UTM:14N
 SCALE: 1" = 6000' ; 1" = 500'

2007 AERIALS 0 250 500 1,000 1,500 2,000 Feet



Legend

- MILE POST
- KEYSTONE PIPELINE - 6.23.08 CL
- ▭ COUNTY LINE
- ▭ TOWNSHIP-RANGE-SECTION LINE
- ▭ CONSTRUCTION SPREAD BREAK
- SHELTER BELTS



PREPARED BY:
TROW ENGINEERING CONSULTANTS INC.
 1300 Metropolitan Boulevard, Suite 200
 Tallahassee, Florida, USA 32308
 Phone: 1-850-385-5441
 Fax: 1-850-385-5523

NO.	REVISION	DATE

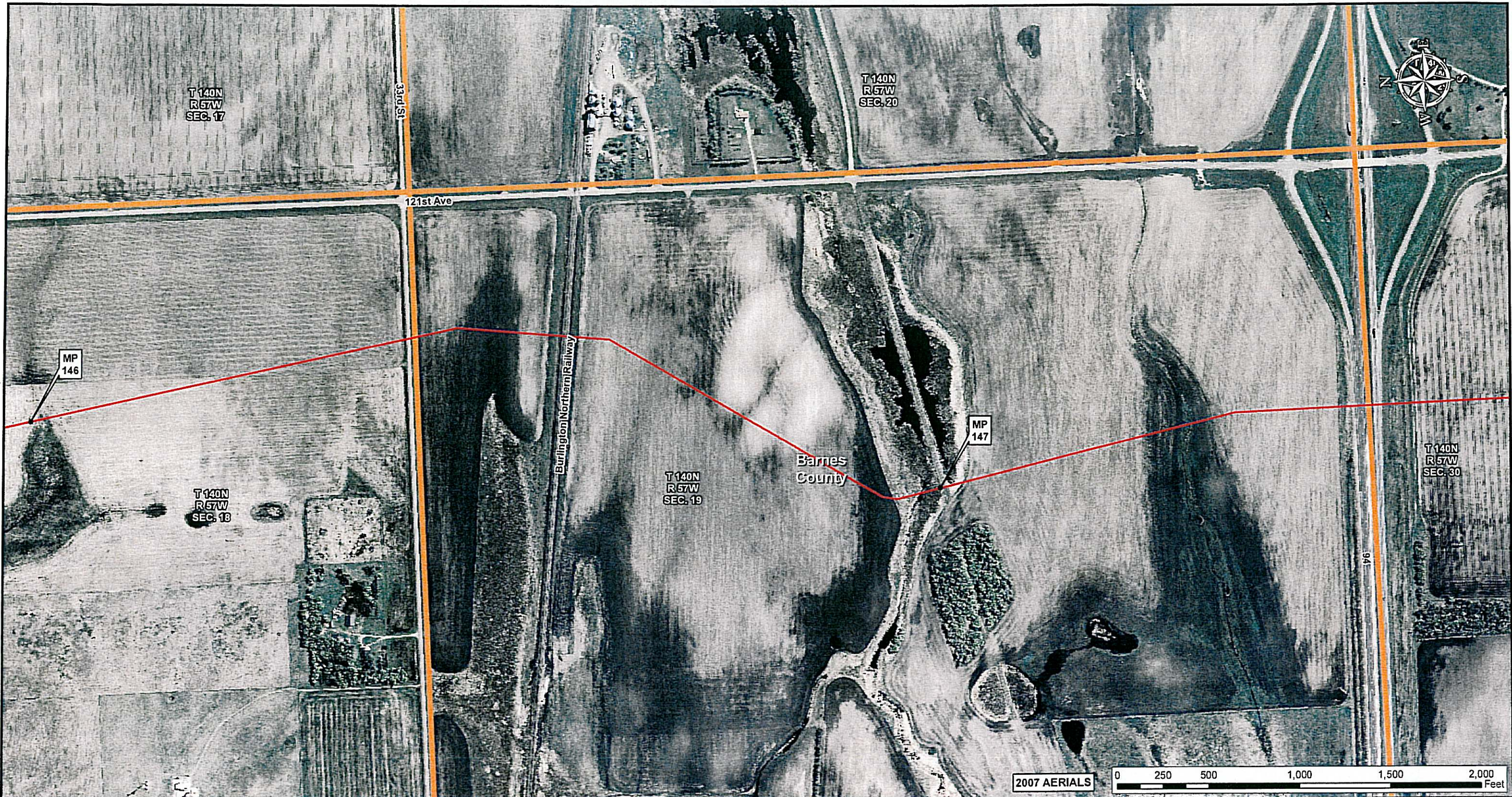
6.23.08
 Amdavit Submitted to ND PSC June 24, 2008

DRAWN BY	CHECKED BY	APPROVED BY	PROJECT
GS	SS	RG	50388S

KEYSTONE PIPELINE PROJECT
 SPREAD 2A ROUTE SHEETS
 BARNES COUNTY, NORTH DAKOTA

MAP PARAMETERS
 PROJECTION: NAD83, UTM:14N
 SCALE: 1: 6000 ; 1" = 500'

DRAWING NUMBER	SHEET	REV.
K-38-ML-9040-P- 13 -A	13	0



2007 AERIALS

0 250 500 1,000 1,500 2,000 Feet

Legend

- MILE POST
- KEYSTONE PIPELINE - 6.23.08 CL
- ▭ COUNTY LINE
- ▭ TOWNSHIP-RANGE-SECTION LINE
- ▭ CONSTRUCTION SPREAD BREAK
- SHELTER BELTS

CANADA	U.S.A.									
	Pembina County	Walsh County	Grand Forks County	Steele County	Cass County	Ransom County	Sargent County	Marshall County		
ND	Cavaller County	Ramsey County	Nelson County	Griggs County	Barnes County	LaMoure County	Dickey County	Brown County		

PREPARED BY:
TROW ENGINEERING CONSULTANTS INC.
 1300 Metropolitan Boulevard, Suite 200
 Tallahassee, Florida, USA 32308
 Phone: 1-850-385-5441
 Fax: 1-850-385-5523

Trow

NO.	REVISION	DATE

PRELIMINARY

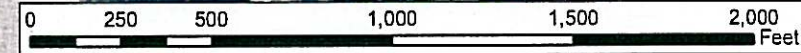
0	Amendmt Submitted to ND PSC June 24, 2008	6.23.08	
DRAWN BY	CHECKED BY	APPROVED BY	PROJECT:
GS	SS	RG	50388S

TransCanada
In business to deliver

KEYSTONE PIPELINE PROJECT
 SPREAD 2A ROUTE SHEETS
 BARNES COUNTY, NORTH DAKOTA

MAP PARAMETERS
 PROJECTION: NAD83, UTM:14N
 SCALE: 1: 6000 ; 1" = 500'

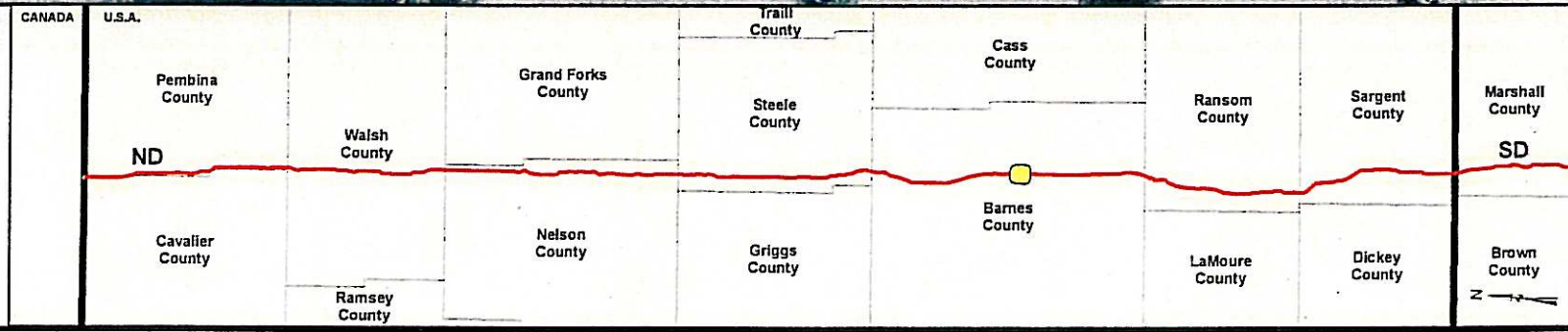
DRAWING NUMBER	SHEET	REV.
K-38-ML-9040-P-14 -A	14	0



2007 AERIALS

Legend

- MILE POST
- KEYSTONE PIPELINE - 6.23.08 CL
- ▭ COUNTY LINE
- ▭ TOWNSHIP-RANGE-SECTION LINE
- ▭ CONSTRUCTION SPREAD BREAK
- SHELTER BELTS



PREPARED BY:
TROW ENGINEERING CONSULTANTS INC.
 1300 Metropolitan Boulevard, Suite 200
 Tallahassee, Florida, USA 32308
 Phone: 1-850-385-5441
 Fax: 1-850-385-5523

Trow

NO.	REVISION	DATE
0	As-drawn Submitted to ND PSC June 24, 2008	6.23.08

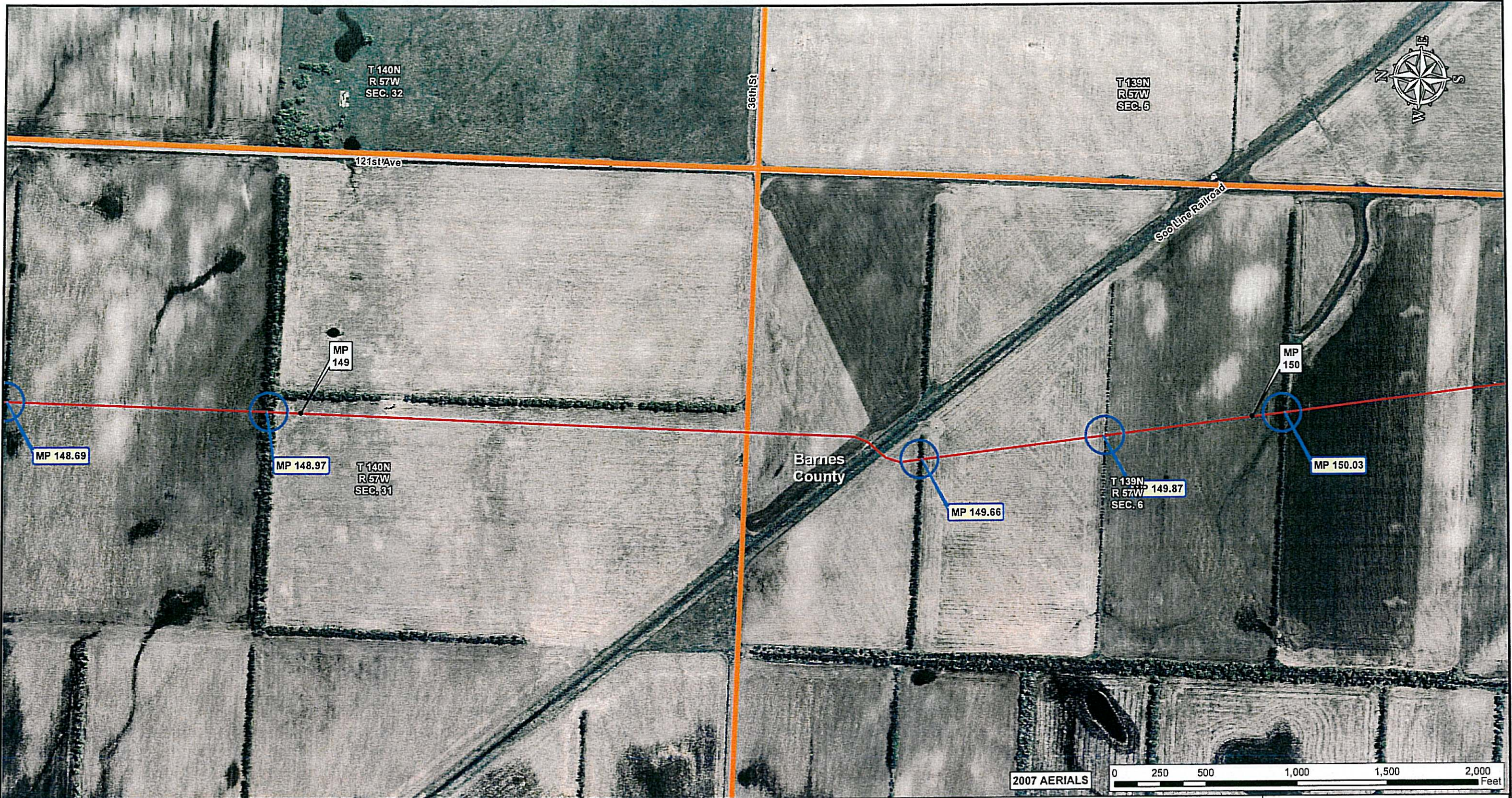
DRAWN BY	CHECKED BY	APPROVED BY	PROJECT:
GS	SS	RG	50388S

TransCanada
In business to deliver

KEYSTONE PIPELINE PROJECT
SPREAD 2A ROUTE SHEETS
 BARNES COUNTY, NORTH DAKOTA

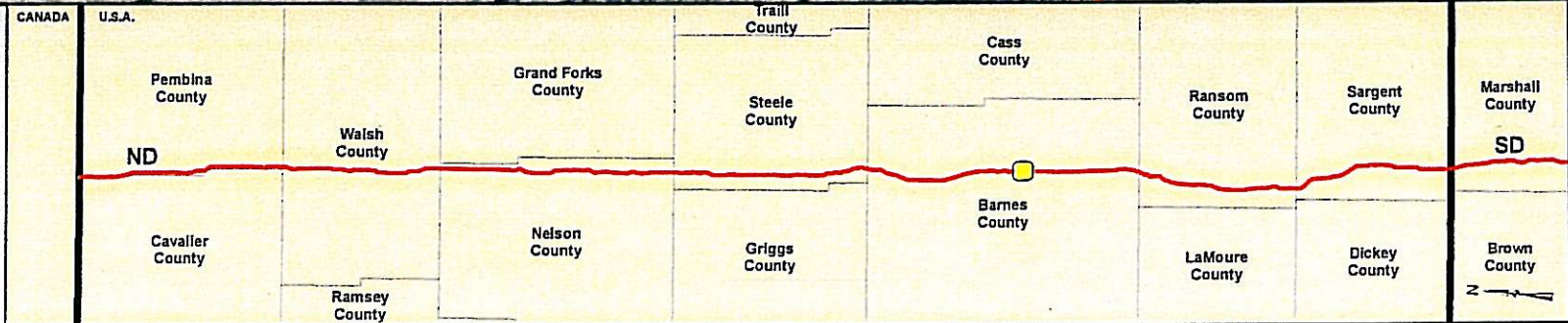
MAP PARAMETERS
 PROJECTION: NAD83, UTM:14N
 SCALE: 1: 6000 ; 1" = 500'

DRAWING NUMBER	SHEET	REV.
K-38-ML-9040-P- 15 -A	15	0



Legend

- MILE POST
- KEYSTONE PIPELINE - 6.23.08 CL
- ▭ COUNTY LINE
- ▭ TOWNSHIP-RANGE-SECTION LINE
- ▭ CONSTRUCTION SPREAD BREAK
- SHELTER BELTS



PREPARED BY:
TROW ENGINEERING CONSULTANTS INC.
 1300 Metropolitan Boulevard, Suite 200
 Tallahassee, Florida, USA 32308
 Phone: 1-850-385-5441
 Fax: 1-850-385-5523

Trow

NO.	REVISION	DATE

6.23.08
As filed Submitted to ND PSC June 24, 2008

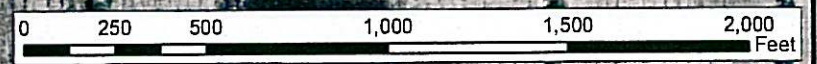
DRAWN BY	CHECKED BY	APPROVED BY	PROJECT:	DRAWING NUMBER	SHEET	REV.
GS	SS	RG	50388S	K-38-ML-9040-P-16 -A	16	0

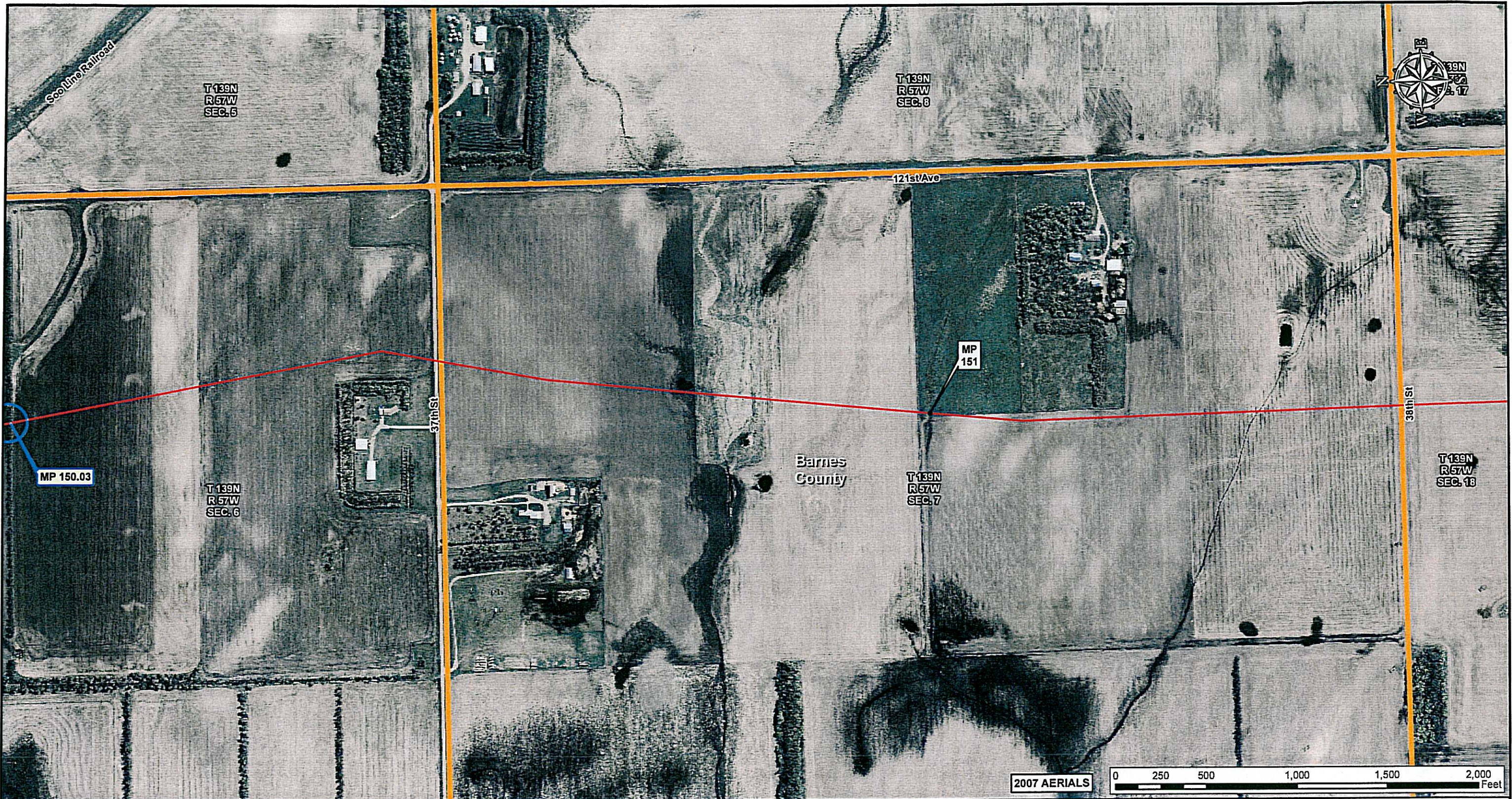
TransCanada
In business to deliver

KEYSTONE PIPELINE PROJECT
SPREAD 2A ROUTE SHEETS
BARNES COUNTY, NORTH DAKOTA

MAP PARAMETERS
 PROJECTION: NAD83, UTM: 14N
 SCALE: 1: 6000 ; 1" = 500'

2007 AERIALS





Legend

- MILE POST
- KEYSTONE PIPELINE - 6.23.08 CL
- ▭ COUNTY LINE
- ▭ TOWNSHIP-RANGE-SECTION LINE
- ▭ CONSTRUCTION SPREAD BREAK
- SHELTER BELTS

CANADA	U.S.A.	Itaill County	Cass County	Ransom County	Sargent County	Marshall County
	Pembina County	Grand Forks County	Steele County			SD
	Walsh County					
	ND					
	Cavaller County	Nelson County	Griggs County	Barnes County	LaMoure County	Dickey County
	Ramsey County					Brown County

PREPARED BY:
TROW ENGINEERING CONSULTANTS INC.
 1300 Metropolitan Boulevard, Suite 200
 Tallahassee, Florida, USA 32308
 Phone: 1-850-385-5441
 Fax: 1-850-385-5523

Trow

NO.	REVISION	DATE

PRELIMINARY

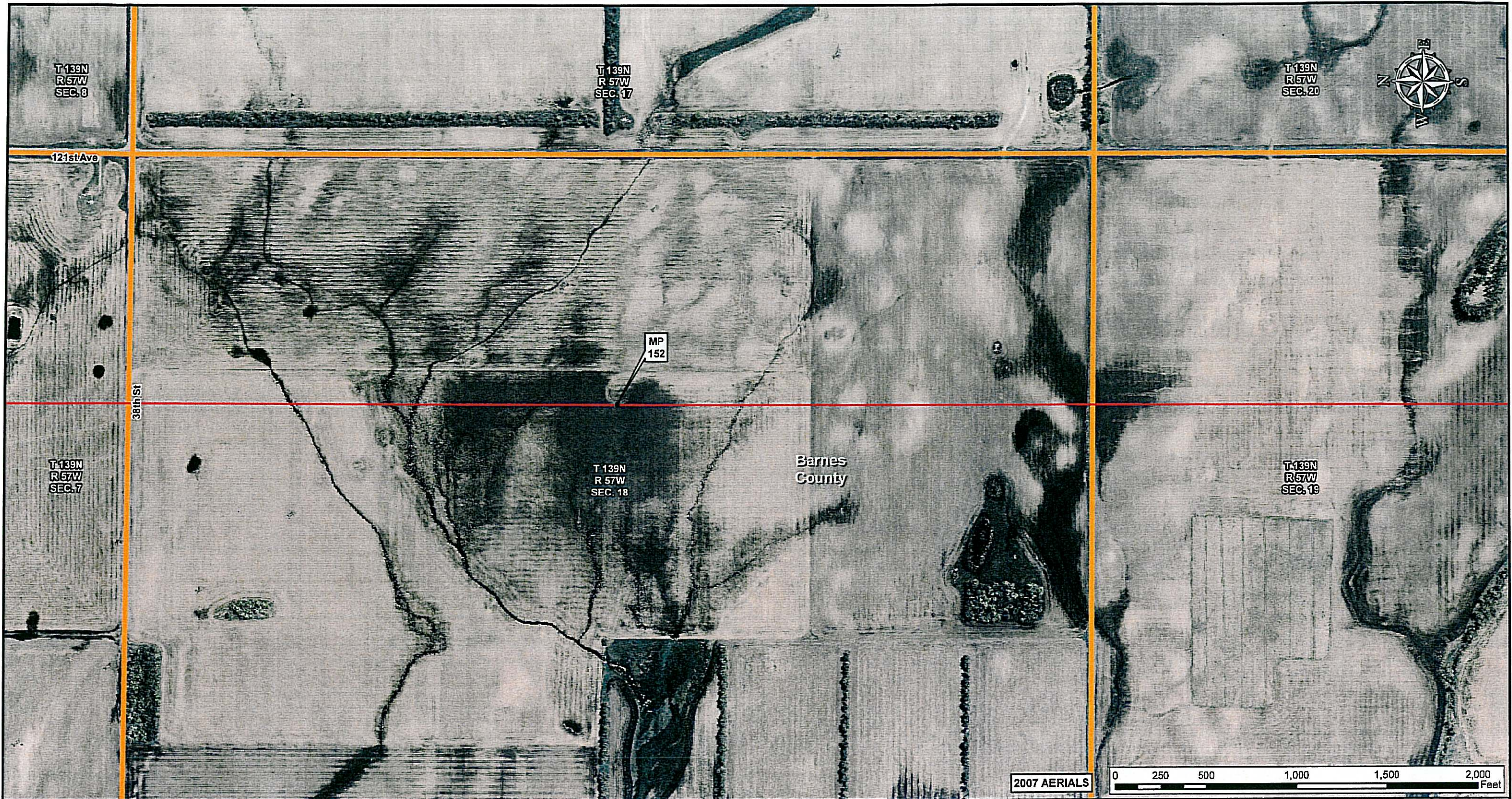
0	Affidavit Submitted to ND PSC June 24, 2008	6.23.08	
DRAWN BY	CHECKED BY	APPROVED BY	PROJECT:
GS	SS	RG	50388S

TransCanada
In business to deliver

**KEYSTONE PIPELINE PROJECT
 SPREAD 2A ROUTE SHEETS
 BARNES COUNTY, NORTH DAKOTA**

MAP PARAMETERS
 PROJECTION: NAD83, UTM:14N
 SCALE: 1" = 6000' ; 1" = 500'

DRAWING NUMBER	SHEET	REV.
K-38-ML-9040-P-17 -A	17	0



Legend

- MILE POST
- KEYSTONE PIPELINE - 6.23.08 CL
- ▭ COUNTY LINE
- ▭ TOWNSHIP-RANGE-SECTION LINE
- ▭ CONSTRUCTION SPREAD BREAK
- SHELTER BELTS

CANADA	U.S.A.	Grand Forks County	Irish County	Cass County	Ransom County	Sargent County	Marshall County
	Pembina County	Walsh County	Steele County				SD
	ND			Barnes County			
	Cavalier County	Nelson County	Griggs County		LaMoure County	Dickey County	Brown County
		Ramsey County					

PREPARED BY:
TROW ENGINEERING CONSULTANTS INC.
 1300 Metropolitan Boulevard, Suite 200
 Tallahassee, Florida, USA 32308
 Phone: 1-850-385-5441
 Fax: 1-850-385-5523

Trow

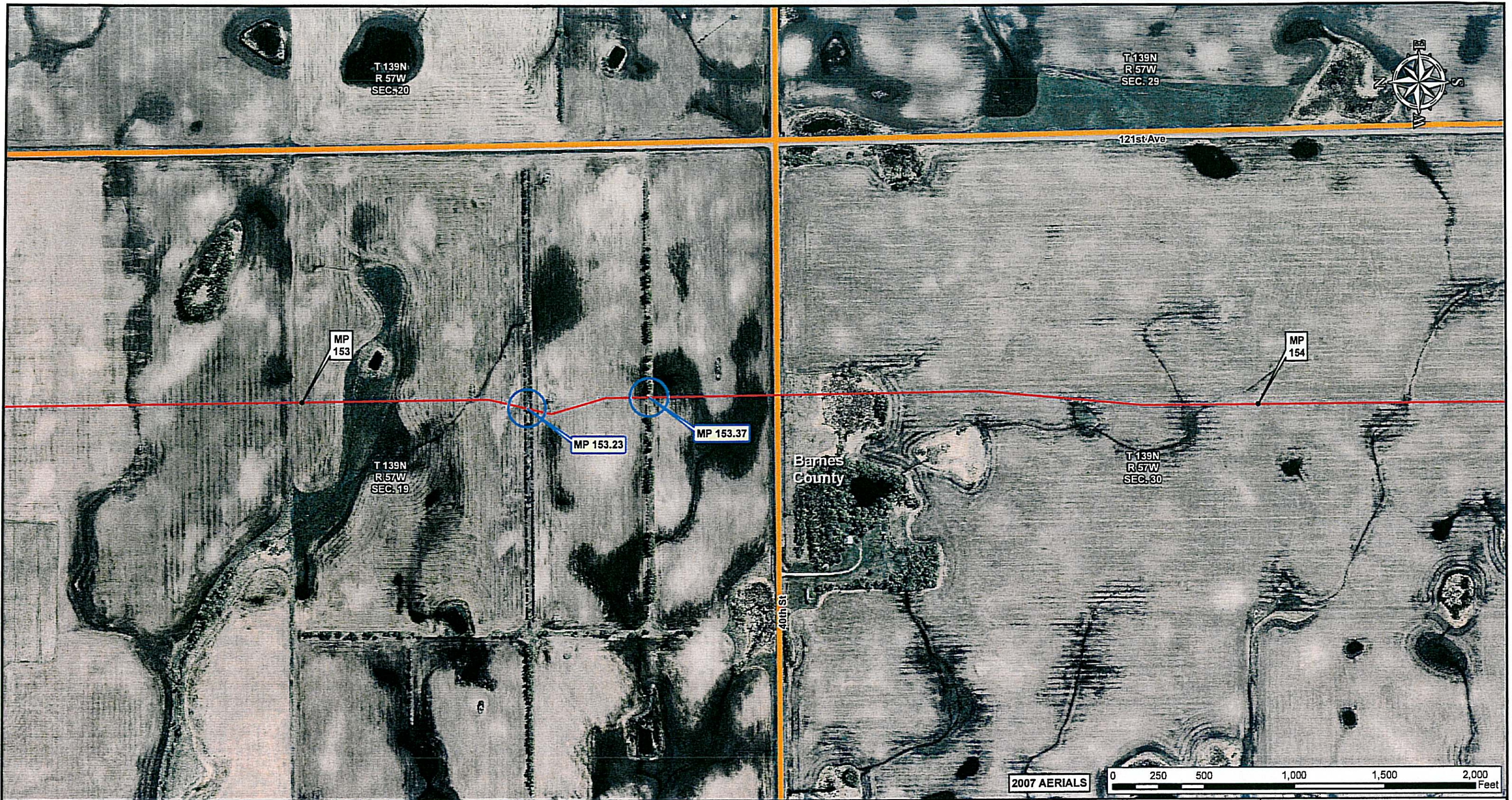
NO.	REVISION	DATE
PRELIMINARY		
<small>Advised Submitted to ND PSC June 24, 2008</small>		
<small>DRAWN BY</small> GS	<small>CHECKED BY</small> SS	<small>APPROVED BY</small> RG
<small>PROJECT:</small> 50388S		<small>DATE:</small> 6.23.08

TransCanada
In business to deliver

KEYSTONE PIPELINE PROJECT
SPREAD 2A ROUTE SHEETS
BARNES COUNTY, NORTH DAKOTA

MAP PARAMETERS
 PROJECTION: NAD83, UTM:14N
 SCALE: 1: 6000 ; 1" = 500'

DRAWING NUMBER	SHEET	REV.
K-38-ML-9040-P-18 -A	18	0



Legend

- MILE POST
- KEYSTONE PIPELINE - 6.23.08 CL
- ▭ COUNTY LINE
- ▭ TOWNSHIP-RANGE-SECTION LINE
- ▭ CONSTRUCTION SPREAD BREAK
- SHELTER BELTS

CANADA	U.S.A.		Trail County	Cass County	Ransom County	Sargent County	Marshall County
	Pembla County	Grand Forks County	Steele County				SD
	ND	Walsh County		Barnes County			
	Cavaller County	Nelson County	Griggs County		LaMoure County	Dickey County	Brown County
		Ramsey County					

PREPARED BY:
TROW ENGINEERING CONSULTANTS INC.
 1300 Metropolitan Boulevard, Suite 200
 Tallahassee, Florida, USA 32308
 Phone: 1-850-385-5441
 Fax: 1-850-385-5523

Trow

NO.	REVISION	DATE

PRELIMINARY

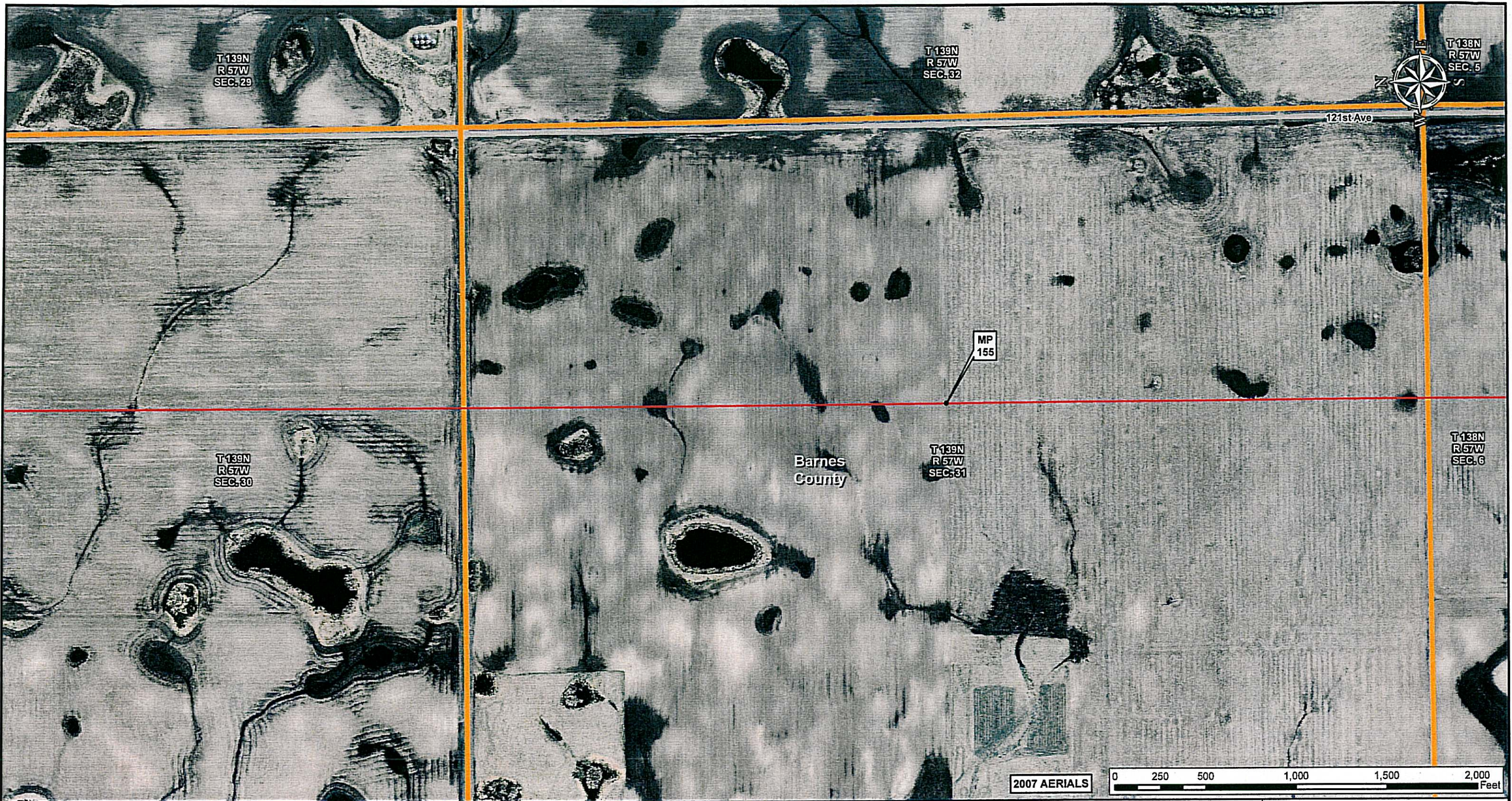
Drawn By	Checked By	Approved By	Project
GS	SS	RG	50388S

TransCanada
In business to deliver

KEYSTONE PIPELINE PROJECT
SPREAD 2A ROUTE SHEETS
BARNES COUNTY, NORTH DAKOTA

MAP PARAMETERS
 PROJECTION: NAD83, UTM:14N
 SCALE: 1: 6000 ; 1" = 500'

DRAWING NUMBER	SHEET	REV.
K-38-ML-9040-P-19 -A	19	0



Legend

- MILE POST
- KEYSTONE PIPELINE - 6.23.08 CL.
- ▭ COUNTY LINE
- ▭ TOWNSHIP-RANGE-SECTION LINE
- ▭ CONSTRUCTION SPREAD BREAK
- SHELTER BELTS

CANADA	U.S.A.	Trail County	Cass County	Ransom County	Sargent County	Marshall County
	Pembina County	Grand Forks County	Steele County			SD
	Walsh County					
	ND					
	Cavaller County	Nelson County	Griggs County	Barnes County	LaMoure County	Brown County
	Ramsey County					

PREPARED BY:
TROW ENGINEERING CONSULTANTS INC.
 1300 Metropolitan Boulevard, Suite 200
 Tallahassee, Florida, USA 32308
 Phone: 1-850-385-5441
 Fax: 1-850-385-5523

Trow

NO.	REVISION	DATE
0	Asfiled Submitted to ND PSC June 24, 2008	6.23.08

PRELIMINARY

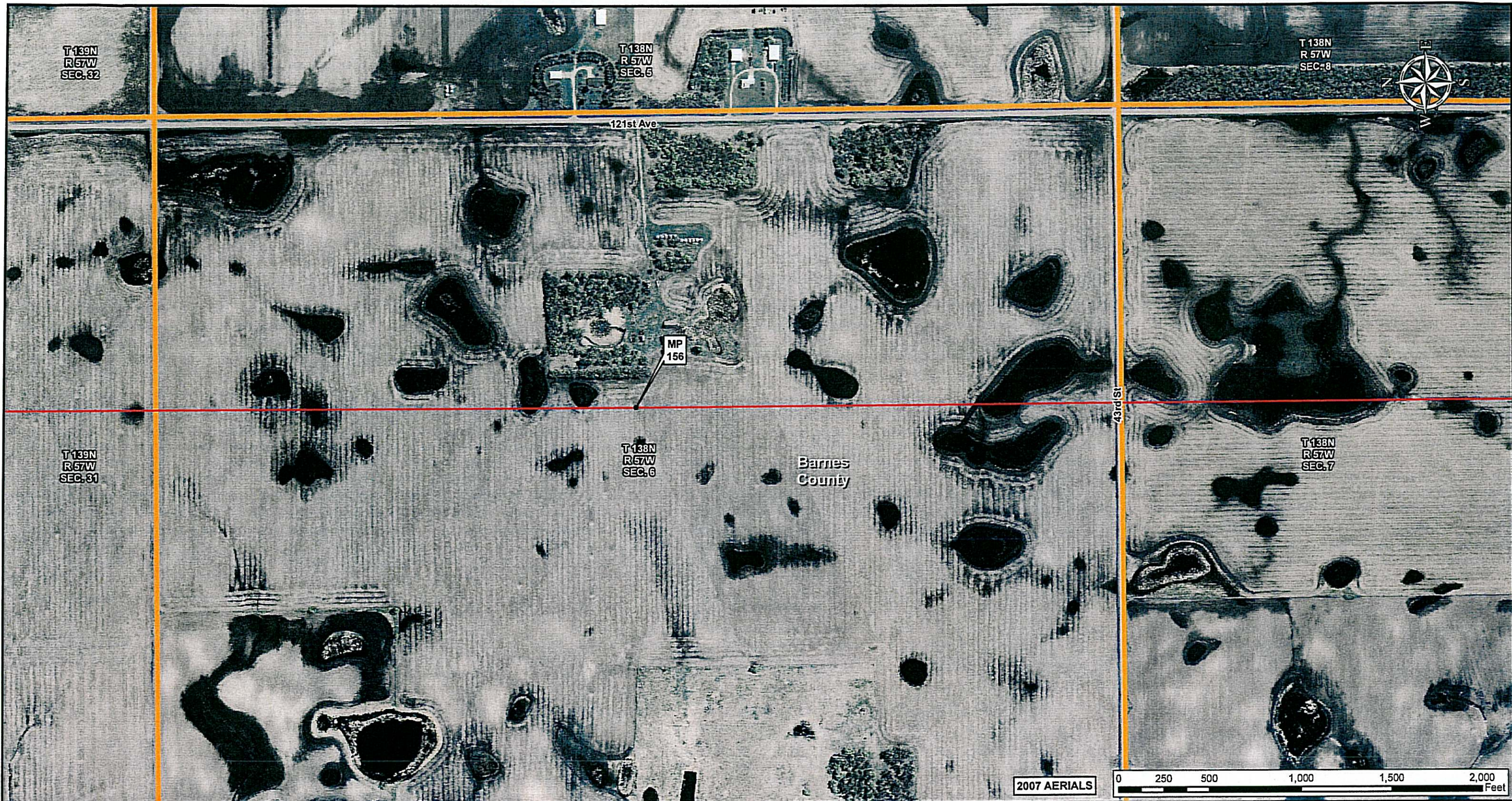
DRAWN BY	CHECKED BY	APPROVED BY	PROJECT:
GS	SS	RG	50388S

TransCanada
In business to deliver

**KEYSTONE PIPELINE PROJECT
 SPREAD 2A ROUTE SHEETS
 BARNES COUNTY, NORTH DAKOTA**

MAP PARAMETERS
 PROJECTION: NAD83, UTM:14N
 SCALE: 1" = 6000' ; 1" = 500'

DRAWING NUMBER	SHEET	REV.
K-38-ML-9040-P-20 -A	20	0



2007 AERIALS



Legend

- MILE POST
- KEYSTONE PIPELINE - 6.23.08 CL
- ▭ COUNTY LINE
- ▭ TOWNSHIP-RANGE-SECTION LINE
- ▭ CONSTRUCTION SPREAD BREAK
- SHELTER BELTS

CANADA	U.S.A.		Trail County	Cass County	Ransom County	Sargent County	Marshall County
	Pembina County	Grand Forks County	Steele County				SD
	Walsh County			Barnes County			
	Cavaller County	Nelson County	Griggs County		LaMoure County	Dickey County	Brown County
		Ramsey County					

PREPARED BY:
TROW ENGINEERING CONSULTANTS INC.
 1300 Metropolitan Boulevard, Suite 200
 Tallahassee, Florida, USA 32308
 Phone: 1-850-385-6441
 Fax: 1-850-385-5523

Trow

NO.	REVISION	DATE

PRELIMINARY

0	Amdevit Submitted to ND PSC June 24, 2008	6.23.08	
DRAWN BY	CHECKED BY	APPROVED BY	PROJECT:
GS	SS	RG	50388S

TransCanada
In business to deliver

**KEYSTONE PIPELINE PROJECT
 SPREAD 2A ROUTE SHEETS
 BARNES COUNTY, NORTH DAKOTA**

MAP PARAMETERS
 PROJECTION: NAD83, UTM:14N
 SCALE: 1" = 6000' ; 1" = 500'

DRAWING NUMBER	SHEET	REV.
K-38-ML-9040-P-21 -A	21	0