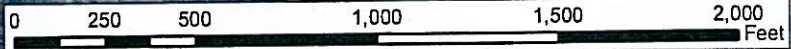
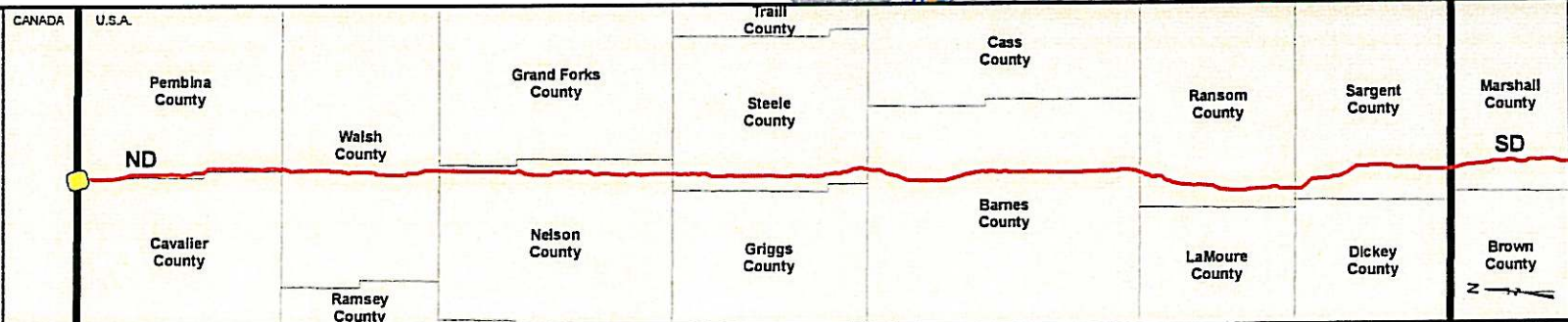


2007 AERIALS



**Legend**

- MILE POST
- KEYSTONE PIPELINE - 6.23.08 CL
- COUNTY LINE
- TOWNSHIP-RANGE-SECTION LINE
- CONSTRUCTION SPREAD BREAK
- SHELTER BELTS



PREPARED BY:  
**TROW ENGINEERING CONSULTANTS INC.**  
 1300 Metropolitan Boulevard, Suite 200  
 Tallahassee, Florida, USA 32308  
 Phone: 1-850-385-5441  
 Fax: 1-850-385-9523

**Trow**

NO.	REVISION	DATE

**PRELIMINARY**

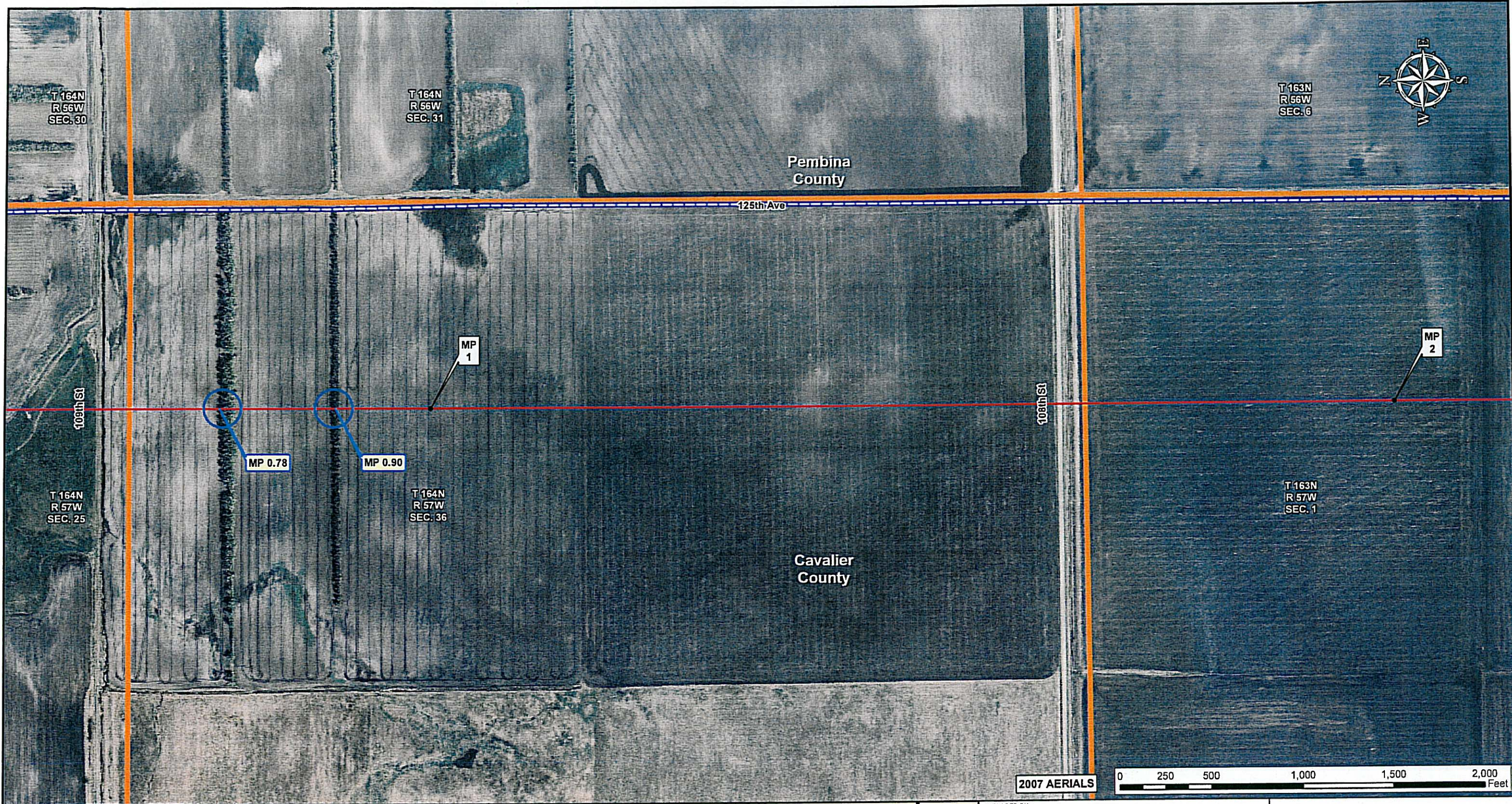
NO.	REVISION	DATE
0	Amisavit Submitted to ND PSC June 24, 2008	6.23.08

DRAWN BY	CHECKED BY	APPROVED BY	PROJECT:	DRAWING NUMBER	SHEET	REV.
GS	SS	RG	50388S	K-38-ML-9040-P-01 -A	01	0

**TransCanada**  
*In business to deliver*

**KEYSTONE PIPELINE PROJECT**  
**SPREAD 1A ROUTE SHEETS**  
 CAVALIER COUNTY, NORTH DAKOTA

MAP PARAMETERS  
 PROJECTION: NAD83, UTM: 14N  
 SCALE: 1" = 6000' ; 1" = 500'

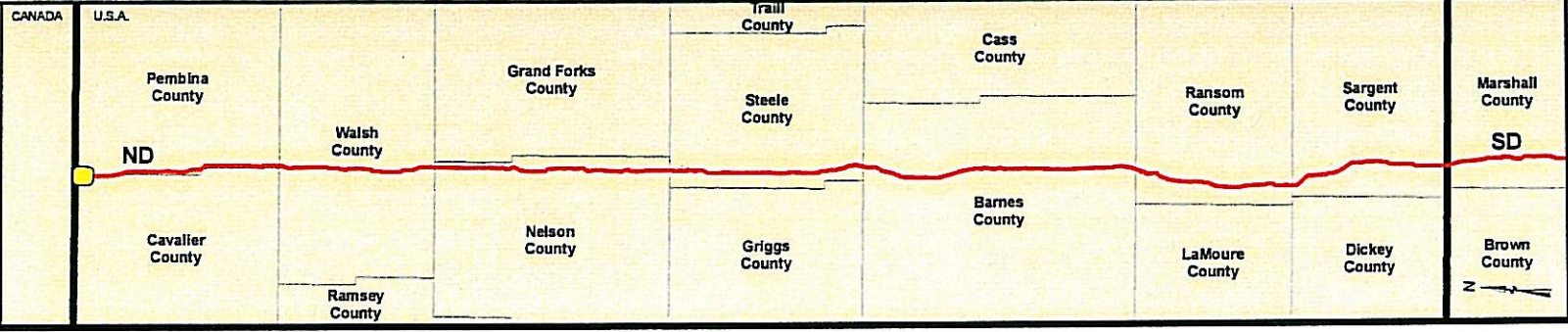


2007 AERIALS



**Legend**

- MILE POST
- KEYSTONE PIPELINE - 6.23.08 CL
- ▭ COUNTY LINE
- ▭ TOWNSHIP-RANGE-SECTION LINE
- ▭ CONSTRUCTION SPREAD BREAK
- SHELTER BELTS



PREPARED BY:  
**TROW ENGINEERING CONSULTANTS INC.**  
 1360 Metropolitan Boulevard, Suite 200  
 Tallahassee, Florida, USA 32308  
 Phone: 1-850-385-5441  
 Fax: 1-850-385-5523

**Trow**

NO.	REVISION	DATE
0	Asfiled Submitted to ND PSC June 24, 2008	6.23.08

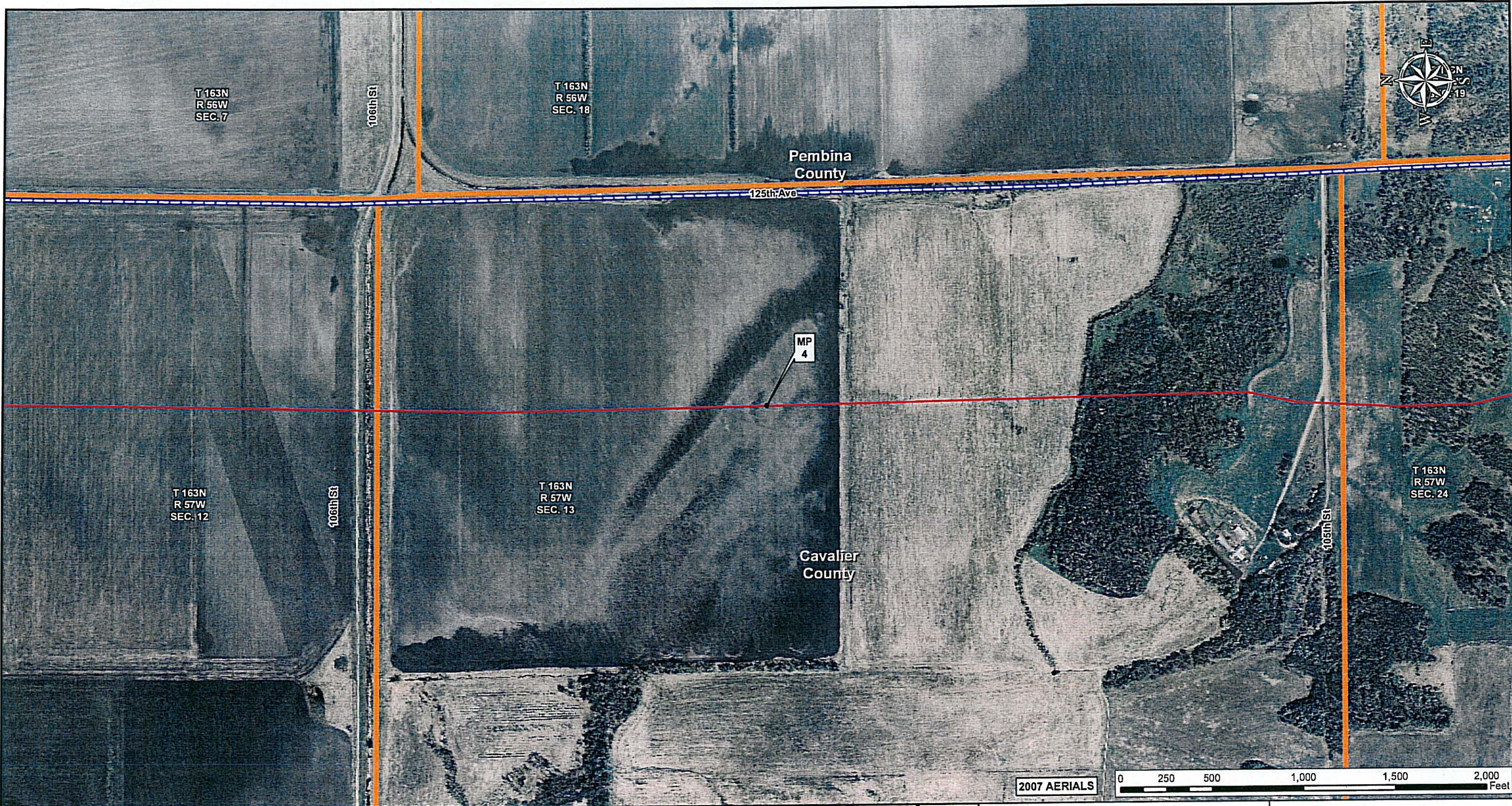
DRAWN BY	CHECKED BY	APPROVED BY	PROJECT:	DRAWING NUMBER	SHEET	REV.
GS	SS	RG	50388S	K-38-ML-9040-P-02 -A	02	0

**TransCanada**  
*In business to deliver*

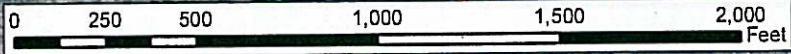
**KEYSTONE PIPELINE PROJECT -  
 SPREAD 1A ROUTE SHEETS**  
 CAVALIER COUNTY, NORTH DAKOTA

MAP PARAMETERS  
 PROJECTION: NAD83, UTM:14N  
 SCALE: 1: 6000 ; 1" = 500'



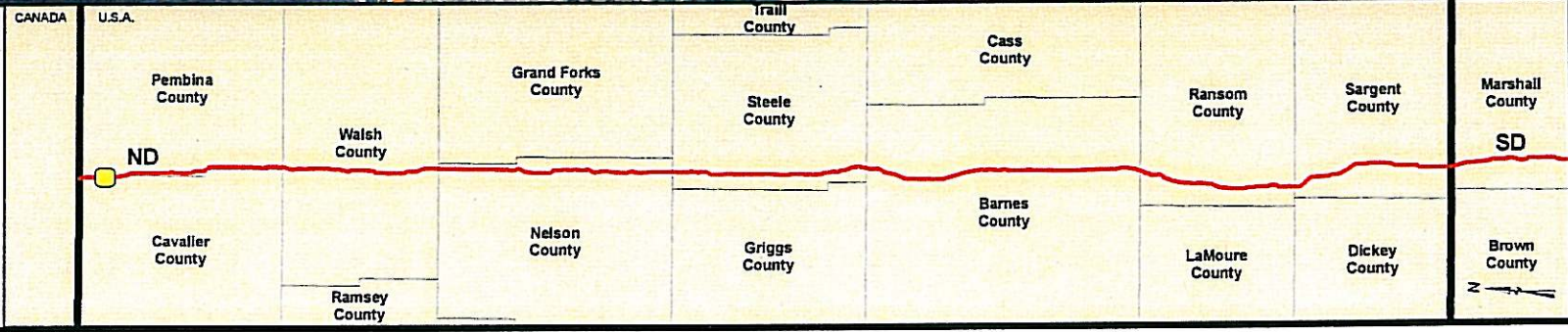


2007 AERIALS



**Legend**

- MILE POST
- KEYSTONE PIPELINE - 6.23.08 CL
- ▭ COUNTY LINE
- ▭ TOWNSHIP-RANGE-SECTION LINE
- ▭ CONSTRUCTION SPREAD BREAK
- SHELTER BELTS



PREPARED BY:  
**TROW ENGINEERING CONSULTANTS INC.**  
 1300 Metropolitan Boulevard, Suite 200  
 Tallahassee, Florida, USA 32308  
 Phone: 1-850-385-5441  
 Fax: 1-850-385-5523

NO.	REVISION	DATE
0	Amidavit Submitted to ND PSC June 24, 2008	6.23.08

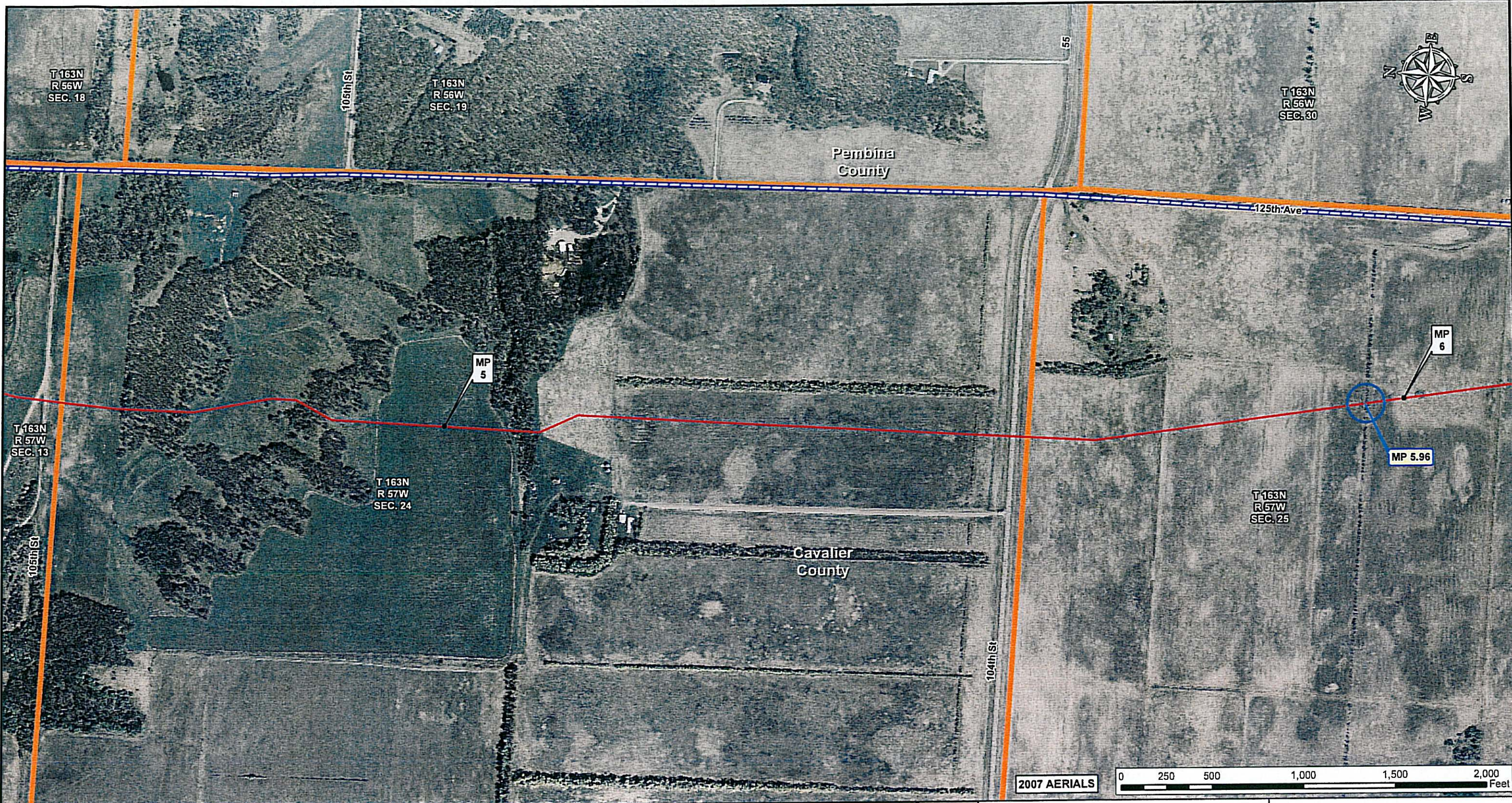
**PRELIMINARY**

DRAWN BY	CHECKED BY	APPROVED BY	PROJECT:	DRAWING NUMBER	SHEET	REV.
GS	SS	RG	50388S	K-38-ML-9040-P-04 -A	04	0

**TransCanada**  
In business to deliver

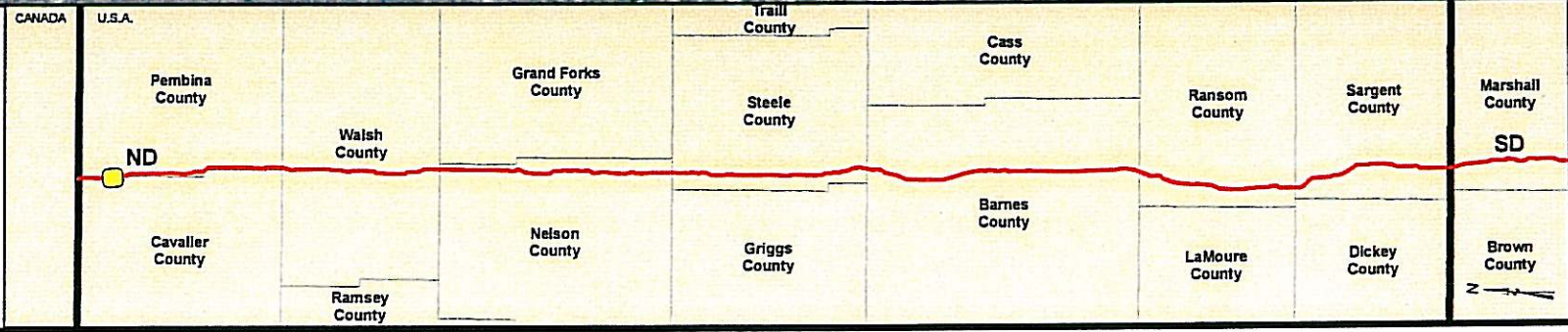
**KEYSTONE PIPELINE PROJECT**  
 SPREAD 1A ROUTE SHEETS  
 CAVALIER COUNTY, NORTH DAKOTA

MAP PARAMETERS  
 PROJECTION: NAD83, UTM: 14N  
 SCALE: 1: 6000 ; 1" = 500'



**Legend**

- MILE POST
- KEYSTONE PIPELINE - 6.23.08 CL
- ▭ COUNTY LINE
- ▭ TOWNSHIP-RANGE-SECTION LINE
- ▭ CONSTRUCTION SPREAD BREAK
- SHELTER BELTS



PREPARED BY:  
**TROW ENGINEERING CONSULTANTS INC.**  
 1300 Metropolitan Boulevard, Suite 200  
 Tallahassee, Florida, USA 32308  
 Phone: 1-850-385-5441  
 Fax: 1-850-385-5523

**Trow**

NO.	REVISION	DATE
0	AMdavit Submitted to ND PSC June 24, 2008	6.23.08

PROJECT: 50388S

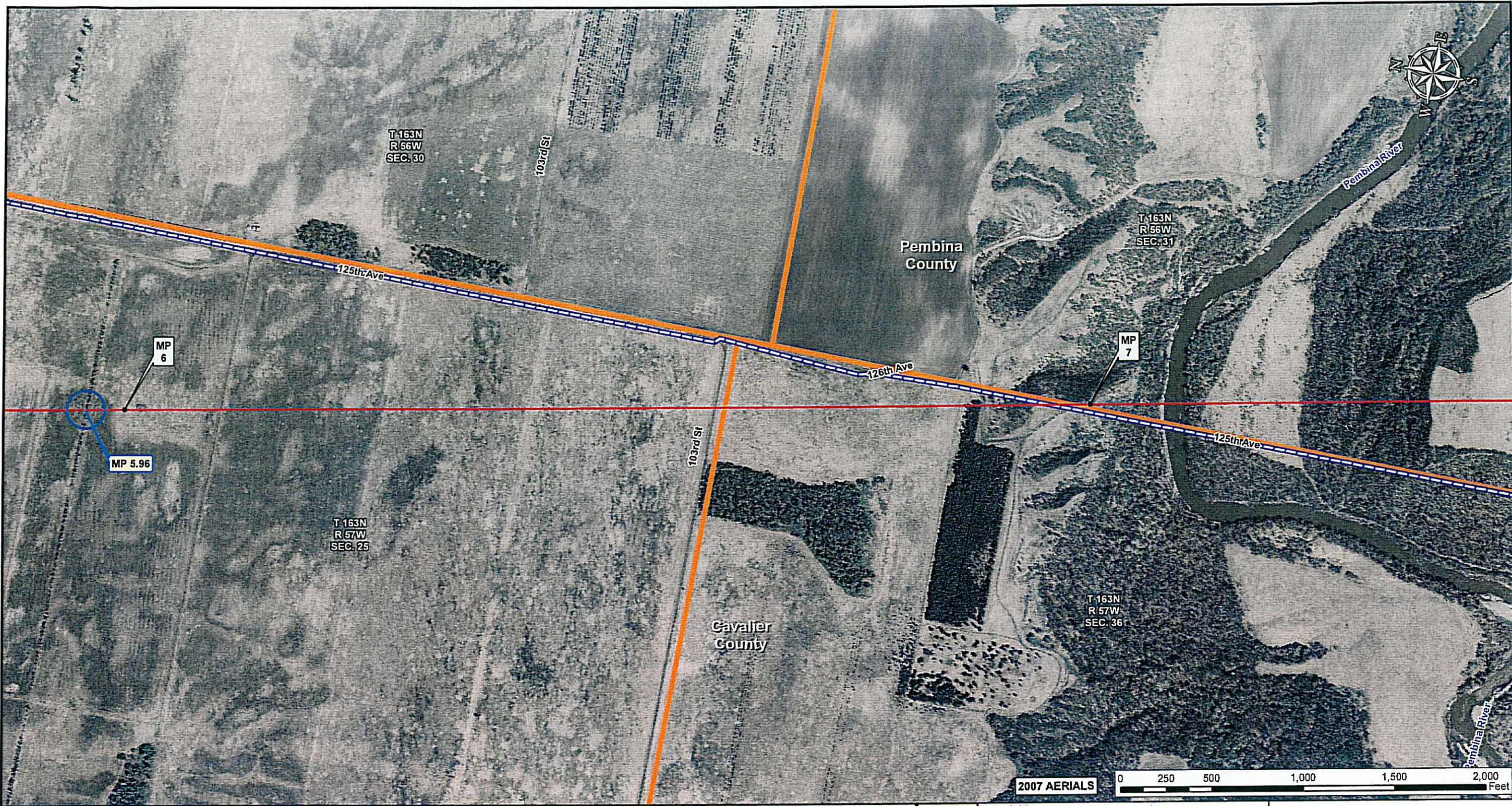
DRAWN BY: GS    CHECKED BY: SS    APPROVED BY: RG

**TransCanada**  
*In business to deliver*

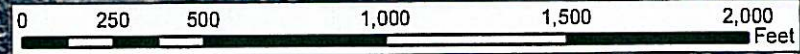
**KEYSTONE PIPELINE PROJECT**  
 SPREAD 1A ROUTE SHEETS  
 CAVALIER COUNTY, NORTH DAKOTA

MAP PARAMETERS  
 PROJECTION: NAD83, UTM:14N  
 SCALE: 1: 6000 ; 1" = 500'

DRAWING NUMBER	SHEET	REV.
K-38-ML-9040-P- 05 -A	05	0



2007 AERIALS



**Legend**

- MILE POST
- KEYSTONE PIPELINE - 6.23.08 CL
- ▭ COUNTY LINE
- ▭ TOWNSHIP-RANGE-SECTION LINE
- ▭ CONSTRUCTION SPREAD BREAK
- SHELTER BELTS

CANADA	U.S.A.									
	Pembina County	Walsh County	Grand Forks County	Trail County	Cass County	Ransom County	Sargent County	Marshall County	Steele County	Barnes County
	ND							SD		
	Cavalier County	Ramsey County	Nelson County	Griggs County	LaMoure County	Dickey County	Brown County			

PREPARED BY:  
**TROW ENGINEERING CONSULTANTS INC.**  
 1300 Metropolitan Boulevard, Suite 200  
 Tallahassee, Florida, USA 32308  
 Phone: 1-850-385-5441  
 Fax: 1-850-385-5523

**Trow**

NO.	REVISION	DATE
0	As filed Submitted to ND PSC June 24, 2008	6.23.08

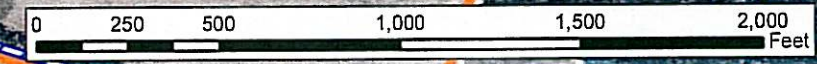
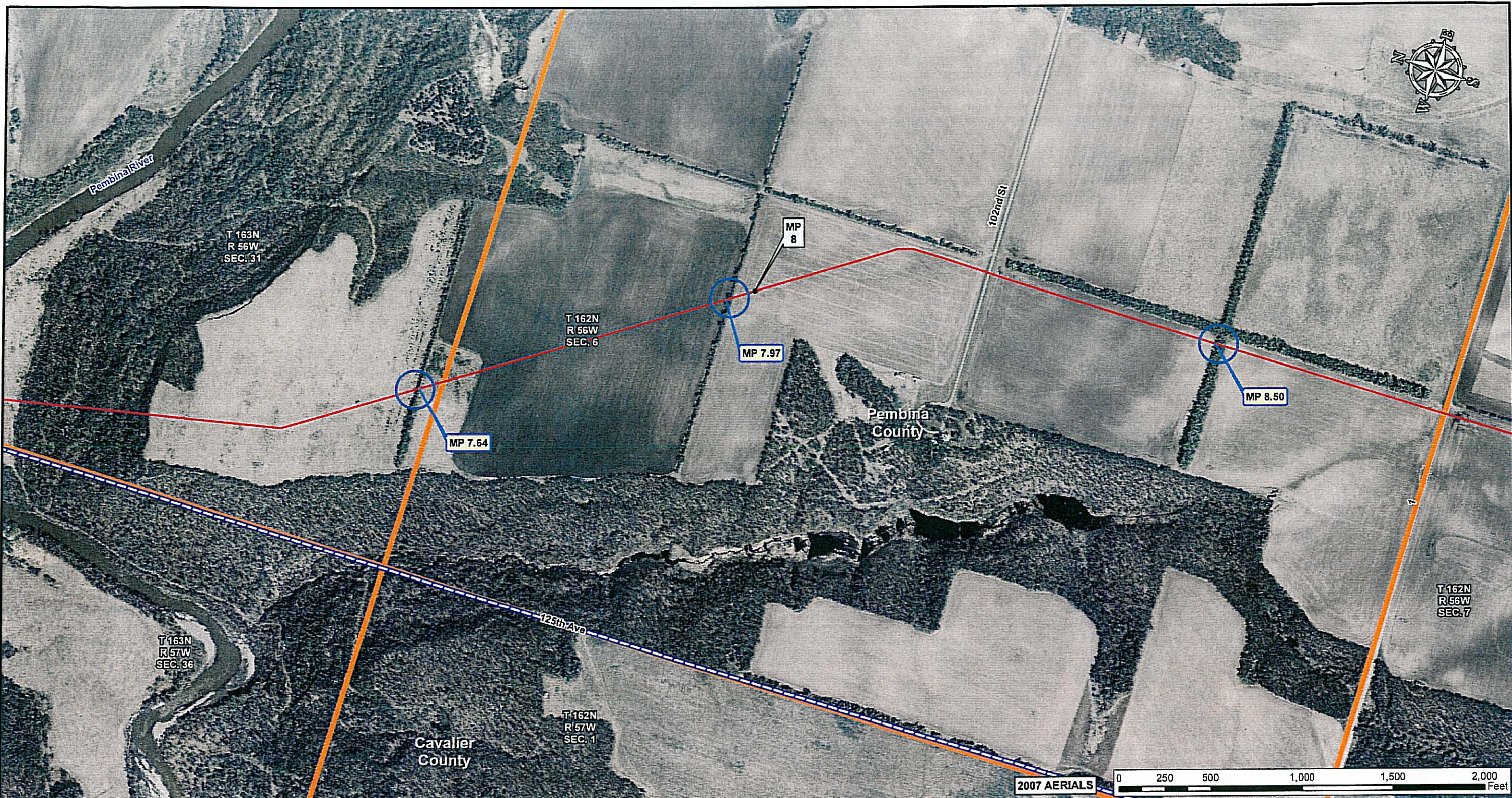
DRAWN BY: GS    CHECKED BY: SS    APPROVED BY: RG    PROJECT: 50388S

**TransCanada**  
*In business to deliver*

**KEYSTONE PIPELINE PROJECT**  
**SPREAD 1A ROUTE SHEETS**  
 CAVALIER COUNTY, NORTH DAKOTA

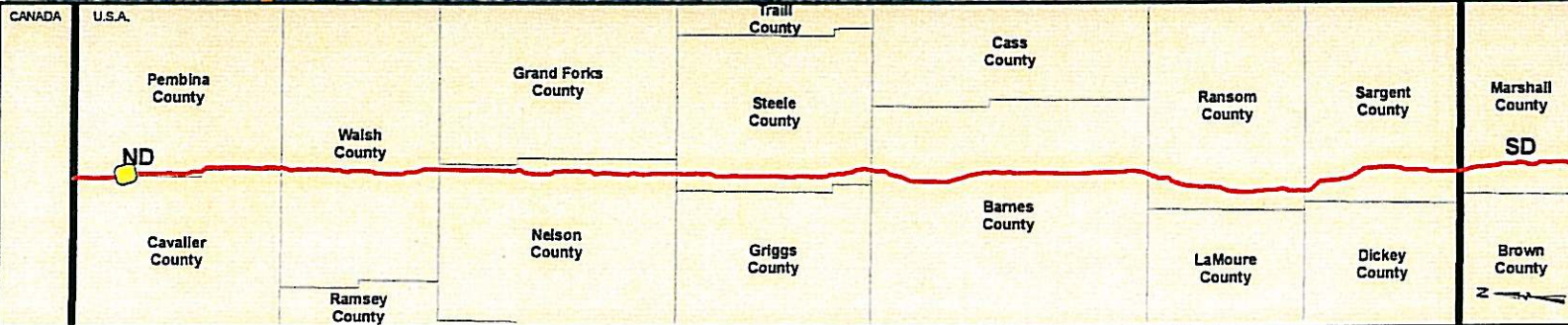
MAP PARAMETERS  
 PROJECTION: NAD83, UTM:14N  
 SCALE: 1: 6000 ; 1" = 500'

DRAWING NUMBER	SHEET	REV.
K-38-ML-9040-P-06 -A	06	0



**Legend**

- MILE POST
- KEYSTONE PIPELINE - 6.23.08 CL
- ▭ COUNTY LINE
- ▭ TOWNSHIP-RANGE-SECTION LINE
- ▭ CONSTRUCTION SPREAD BREAK
- SHELTER BELTS



PREPARED BY:  
**TROW ENGINEERING CONSULTANTS INC.**  
 1300 Metropolitan Boulevard, Suite 200  
 Tallahassee, Florida, USA 32308  
 Phone: 1-850-385-5441  
 Fax: 1-850-385-5523

**Trow**

NO.	REVISION	DATE
0	Amidavit Submitted to ND PSC June 24, 2008	6.23.08

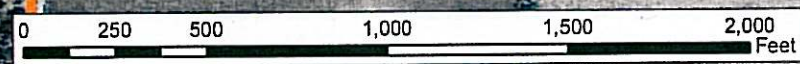
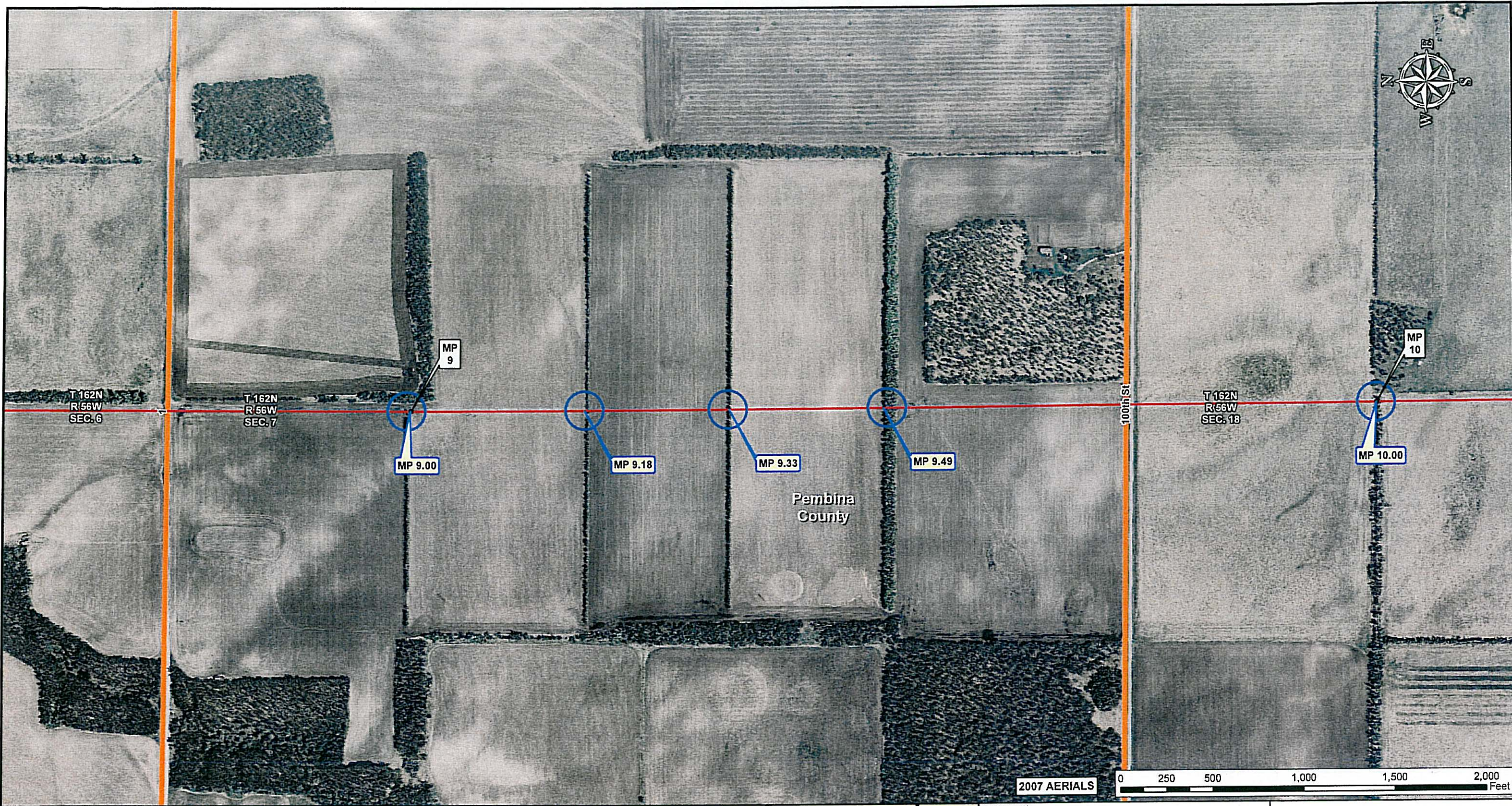
**PRELIMINARY**

DRAWN BY	CHECKED BY	APPROVED BY	PROJECT:	DRAWING NUMBER	SHEET	REV.
GS	SS	RG	50388S	K-38-ML-9040-P-07 -A	07	0

**TransCanada**  
In business to deliver

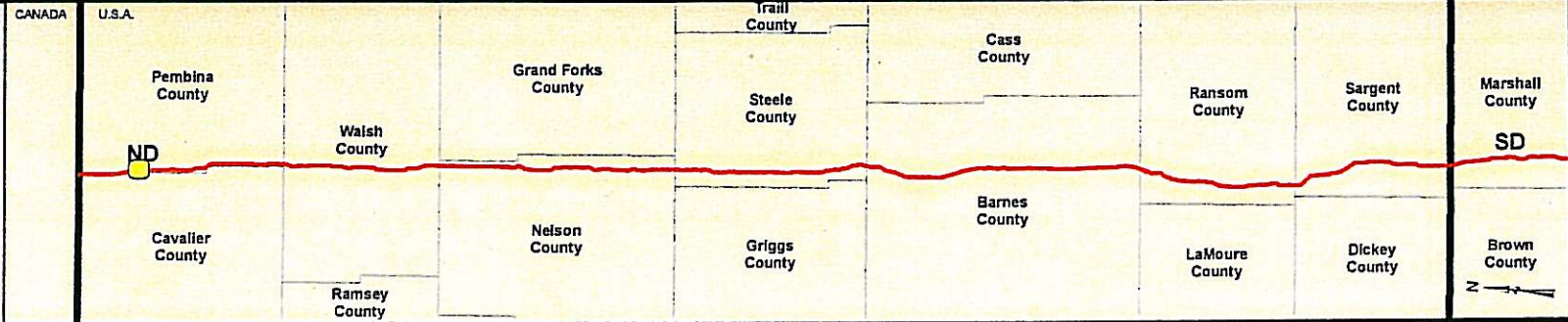
**KEYSTONE PIPELINE PROJECT**  
**SPREAD 1A ROUTE SHEETS**  
 PEMBINA COUNTY, NORTH DAKOTA

MAP PARAMETERS  
 PROJECTION: NAD83, UTM:14N  
 SCALE: 1" = 6000' ; 1" = 500'



**Legend**

- MILE POST
- KEYSTONE PIPELINE - 6.23.08 CL
- ▭ COUNTY LINE
- ▭ TOWNSHIP-RANGE-SECTION LINE
- ▭ CONSTRUCTION SPREAD BREAK
- SHELTER BELTS



PREPARED BY:  
**TROW ENGINEERING CONSULTANTS INC.**  
 1300 Metropolitan Boulevard, Suite 200  
 Tallahassee, Florida, USA 32308  
 Phone: 1-850-385-5441  
 Fax: 1-850-385-5523

**Trow**

NO.	REVISION	DATE
0	Amidavit Submitted to ND PSC June 24, 2008	6.23.08

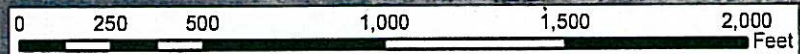
**PRELIMINARY**

DRAWN BY	CHECKED BY	APPROVED BY	PROJECT:	DRAWING NUMBER	SHEET	REV.
GS	SS	RG	50388S	K-38-ML-9040-P-08 -A	08	0

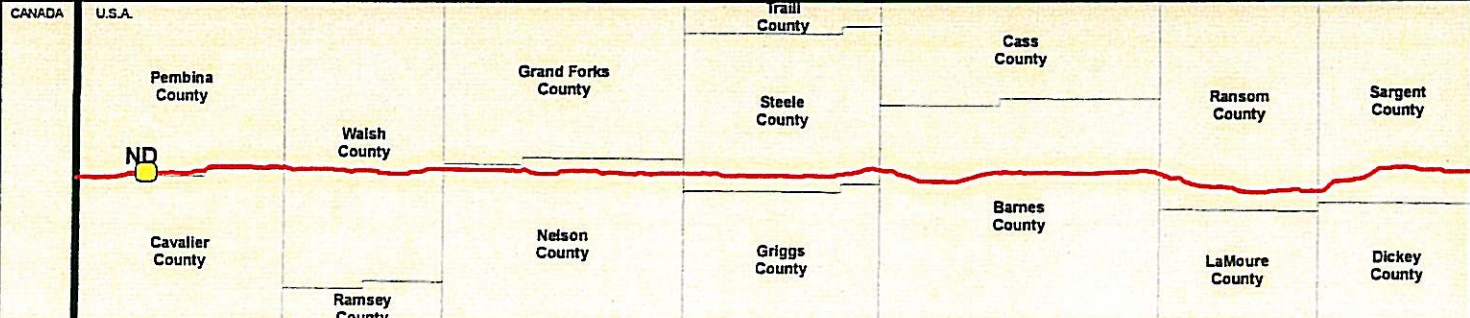
**TransCanada**  
*In business to deliver*

**KEYSTONE PIPELINE PROJECT**  
**SPREAD 1A ROUTE SHEETS**  
 PEMBINA COUNTY, NORTH DAKOTA

MAP PARAMETERS  
 PROJECTION: NAD83, UTM:14N  
 SCALE: 1: 6000 ; 1" = 500'



- Legend**
- MILE POST
  - KEYSTONE PIPELINE - 6.23.08 CL
  - ▭ COUNTY LINE
  - ▭ TOWNSHIP-RANGE-SECTION LINE
  - ▭ CONSTRUCTION SPREAD BREAK
  - SHELTER BELTS



PREPARED BY:  
**TROW ENGINEERING CONSULTANTS INC.**  
 1300 Metropolitan Boulevard, Suite 200  
 Tallahassee, Florida, USA 32308  
 Phone: 1-850-385-5441  
 Fax: 1-850-385-5523

**Trow**

NO.	REVISION	DATE
0	As-drawn Submitted to ND PSC June 24, 2008	6.23.08

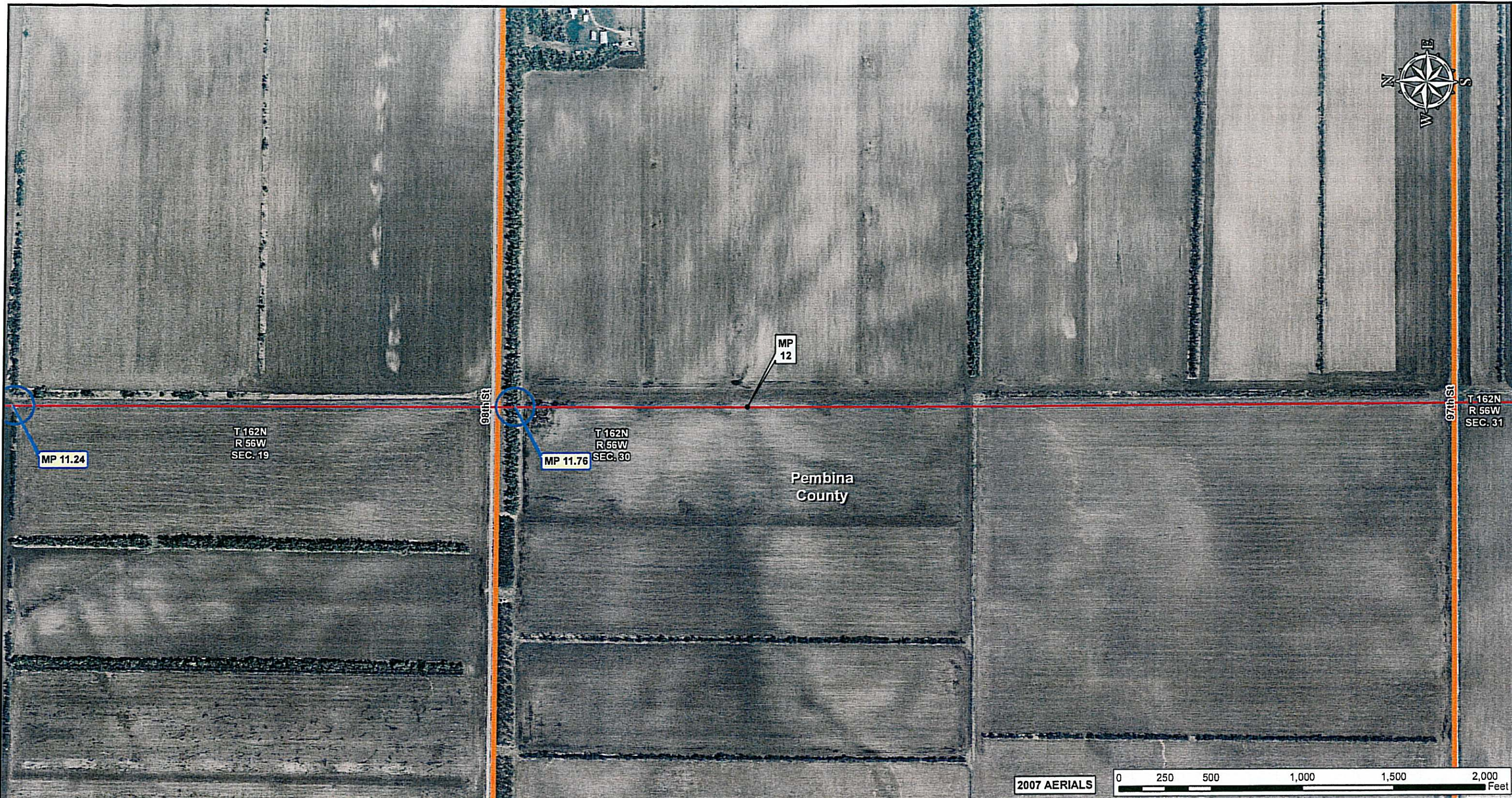
**PRELIMINARY**

DRAWN BY	CHECKED BY	APPROVED BY	PROJECT	DRAWING NUMBER	SHEET	REV.
GS	SS	RG	50388S	K-38-ML-9040-P-09 -A	09	0

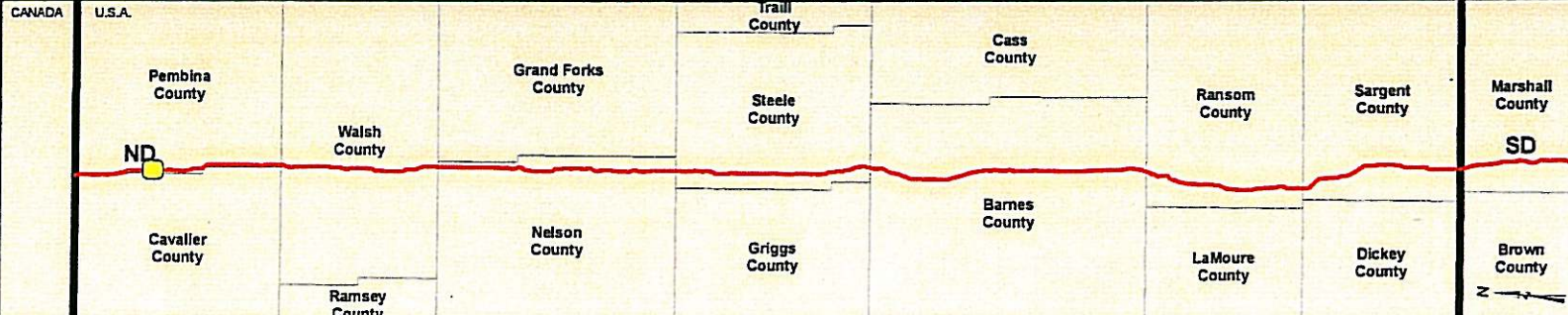
**TransCanada**  
*In business to deliver*

**KEYSTONE PIPELINE PROJECT  
 SPREAD 1A ROUTE SHEETS  
 PEMBINA COUNTY, NORTH DAKOTA**

MAP PARAMETERS  
 PROJECTION: NAD83, UTM:14N  
 SCALE: 1: 6000 ; 1" = 500'



- Legend**
- MILE POST
  - KEYSTONE PIPELINE - 6.23.08 CL
  - ▭ COUNTY LINE
  - ▭ TOWNSHIP-RANGE-SECTION LINE
  - ▭ CONSTRUCTION SPREAD BREAK
  - SHELTER BELTS



PREPARED BY:  
**TROW ENGINEERING CONSULTANTS INC.**  
 1300 Metropolitan Boulevard, Suite 200  
 Tallahassee, Florida, USA 32308  
 Phone: 1-850-385-5441  
 Fax: 1-850-385-5523



NO.	REVISION	DATE

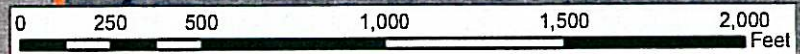
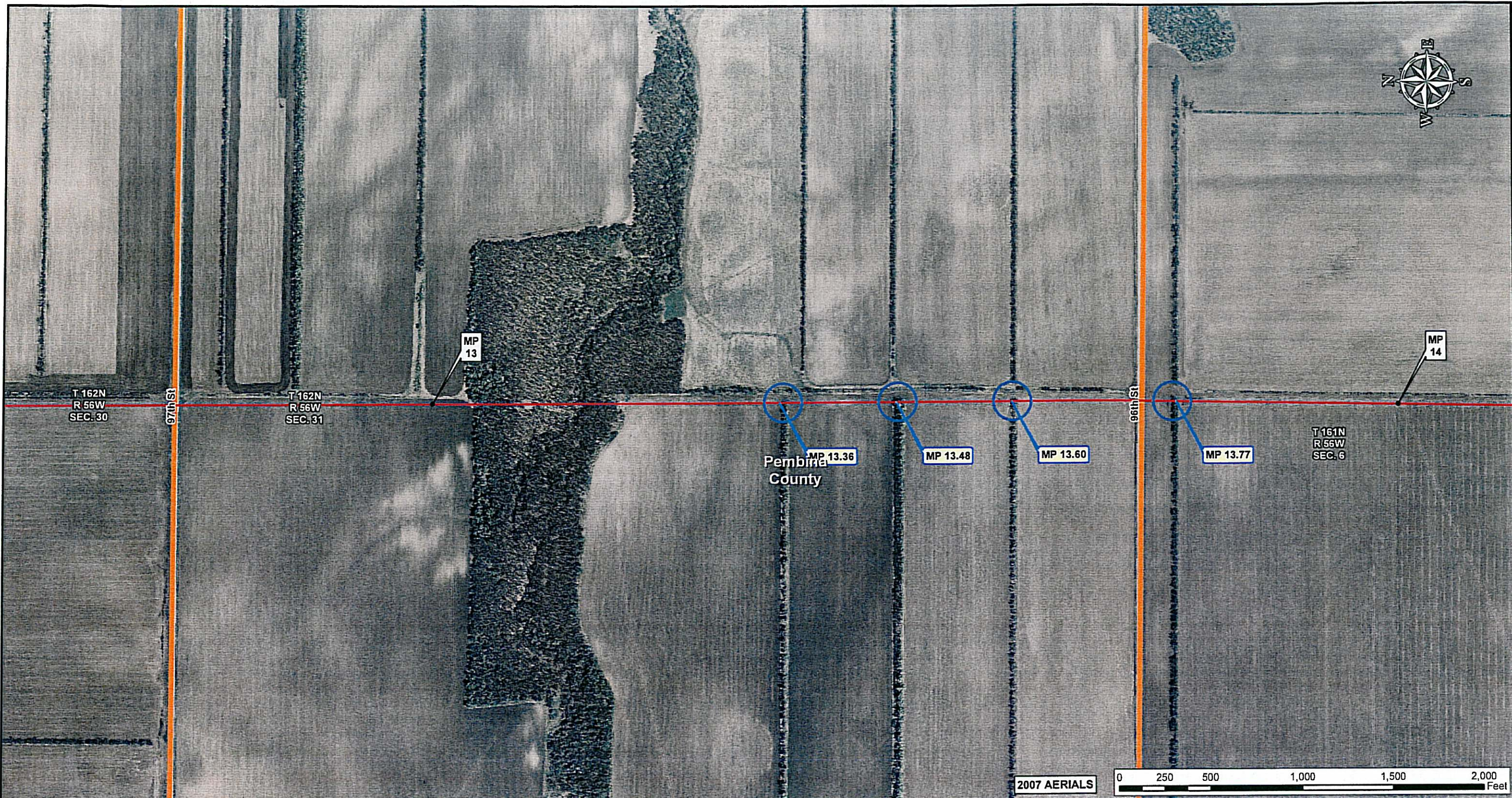
**PRELIMINARY**

DRAWN BY	CHECKED BY	APPROVED BY	PROJECT:	DRAWING NUMBER	SHEET	REV.
GS	SS	RG	50388S	K-38-ML-9040-P-10 -A	10	0



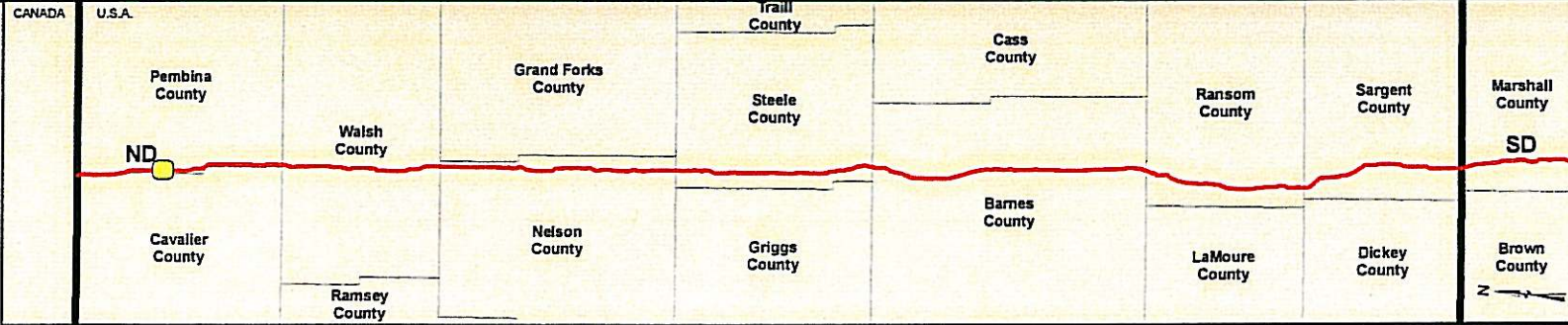
**KEYSTONE PIPELINE PROJECT**  
**SPREAD 1A ROUTE SHEETS**  
 PEMBINA COUNTY, NORTH DAKOTA

MAP PARAMETERS  
 PROJECTION: NAD83, UTM:14N  
 SCALE: 1" = 6000' ; 1" = 500'



2007 AERIALS

- Legend**
- MILE POST
  - KEYSTONE PIPELINE - 6.23.08 CL
  - ▭ COUNTY LINE
  - ▭ TOWNSHIP-RANGE-SECTION LINE
  - ▭ CONSTRUCTION SPREAD BREAK
  - SHELTER BELTS



PREPARED BY:  
**TROW ENGINEERING CONSULTANTS INC.**  
 1300 Metropolitan Boulevard, Suite 200  
 Tallahassee, Florida, USA 32308  
 Phone: 1-850-385-9441  
 Fax: 1-850-385-5523

**Trow**

NO.	REVISION	DATE
0	Amendavit Submitted to ND PSC June 24, 2008	6.23.08

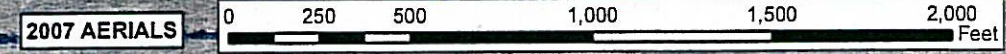
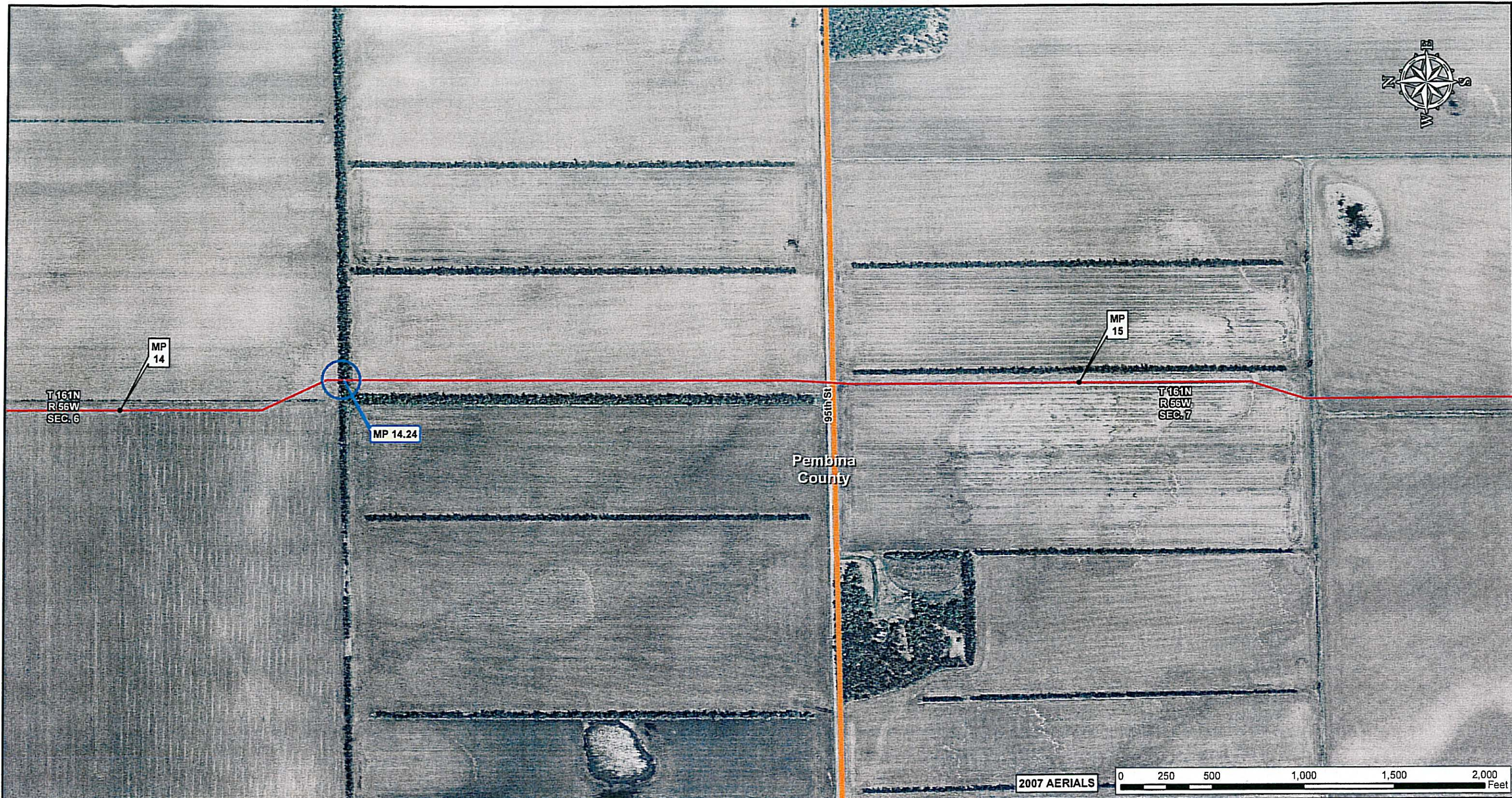
**PRELIMINARY**

DRAWN BY	CHECKED BY	APPROVED BY	PROJECT:	DRAWING NUMBER	SHEET	REV.
GS	SS	RG	50388S	K-38-ML-9040-P- 11 -A	11	0

**TransCanada**  
In business to deliver

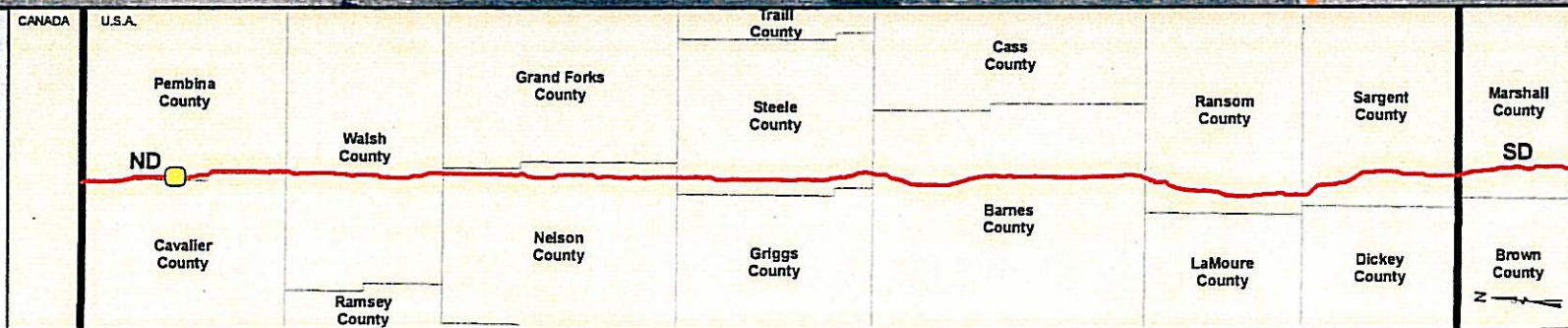
**KEYSTONE PIPELINE PROJECT**  
**SPREAD 1A ROUTE SHEETS**  
 PEMBINA COUNTY, NORTH DAKOTA

MAP PARAMETERS  
 PROJECTION: NAD83, UTM: 14N  
 SCALE: 1" = 600' ; 1" = 500'



**Legend**

- MILE POST
- KEYSTONE PIPELINE - 6.23.08 CL
- ▭ COUNTY LINE
- ▭ TOWNSHIP-RANGE-SECTION LINE
- ▭ CONSTRUCTION SPREAD BREAK
- SHELTER BELTS



PREPARED BY:  
**TROW ENGINEERING CONSULTANTS INC.**  
 1300 Metropolitan Boulevard, Suite 200  
 Tallahassee, Florida, USA 32308  
 Phone: 1-850-385-5441  
 Fax: 1-850-385-5523

**Trow**

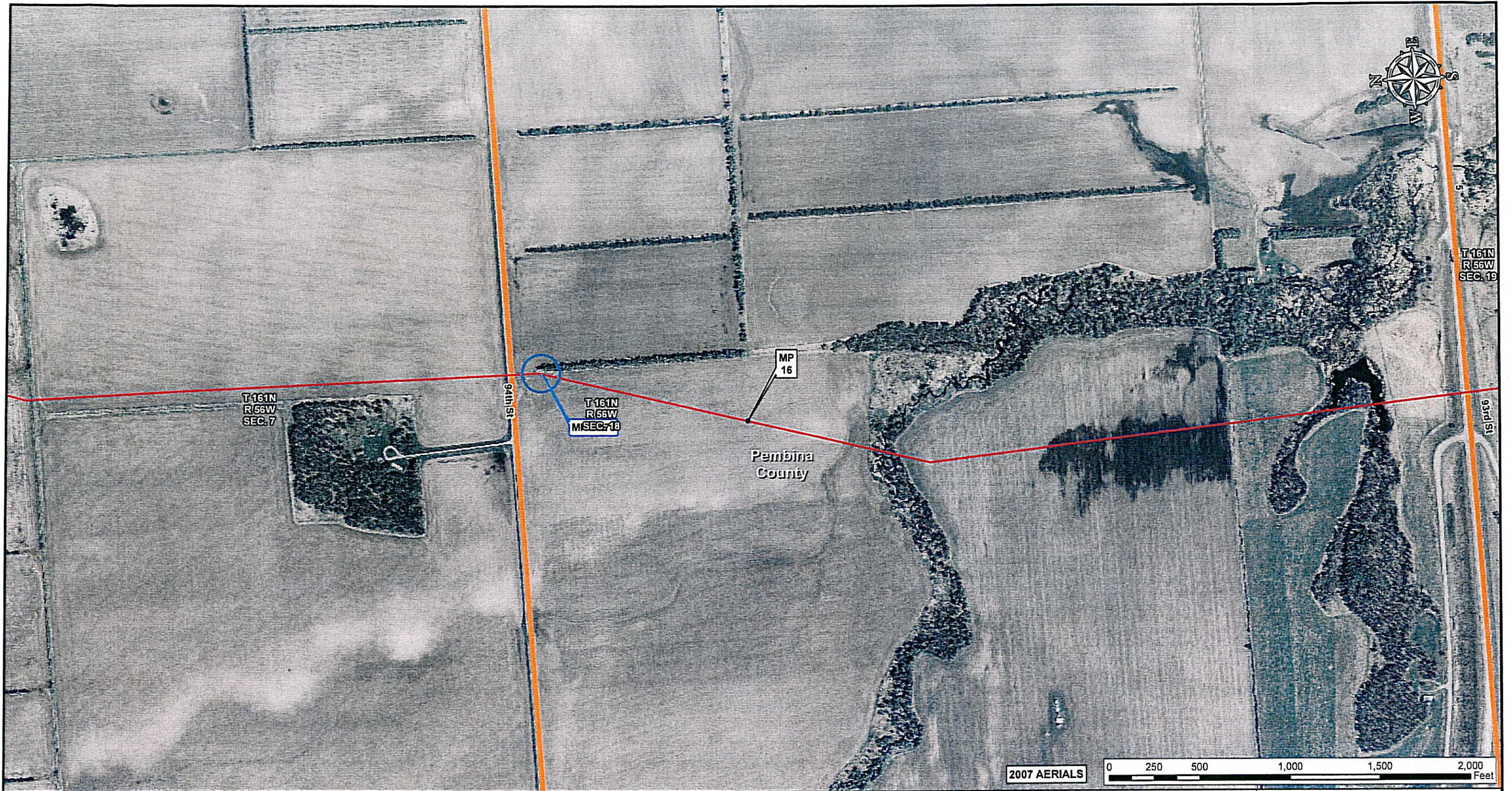
NO.	REVISION	DATE
0	AMDavit Submitted to ND PSC June 24, 2008	6.23.08

DRAWN BY: GS      CHECKED BY: SS      APPROVED BY: RG      PROJECT: 50388S

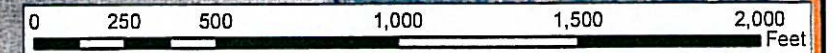
**KEYSTONE PIPELINE PROJECT**  
**SPREAD 1A ROUTE SHEETS**  
 PEMBINA COUNTY, NORTH DAKOTA

MAP PARAMETERS  
 PROJECTION: NAD83, UTM:14N  
 SCALE: 1: 6000 ; 1" = 500'

DRAWING NUMBER	SHEET	REV.
K-38-ML-9040-P-12 -A	12	0

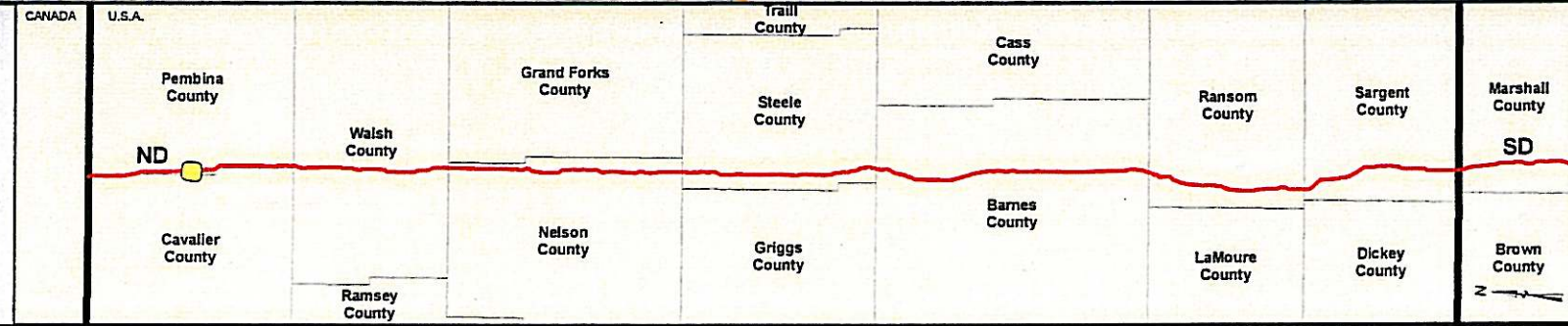


2007 AERIALS



**Legend**

- MILE POST
- KEYSTONE PIPELINE - 6.23.08 CL
- ▭ COUNTY LINE
- ▭ TOWNSHIP-RANGE-SECTION LINE
- ▭ CONSTRUCTION SPREAD BREAK
- SHELTER BELTS



PREPARED BY:  
**TROW ENGINEERING CONSULTANTS INC.**  
 1300 Metropolitan Boulevard, Suite 200  
 Tallahassee, Florida, USA 32308  
 Phone: 1-850-385-5441  
 Fax: 1-850-385-5523

**Trow**

NO.	REVISION	DATE
0	Asfiled Submitted to ND PSC June 24, 2008	6.23.08

DRAWN BY	CHECKED BY	APPROVED BY	PROJECT:	DRAWING NUMBER	SHEET	REV.
GS	SS	RG	50388S	K-38-ML-9040-P-13 -A	13	0

**TransCanada**  
In business to deliver

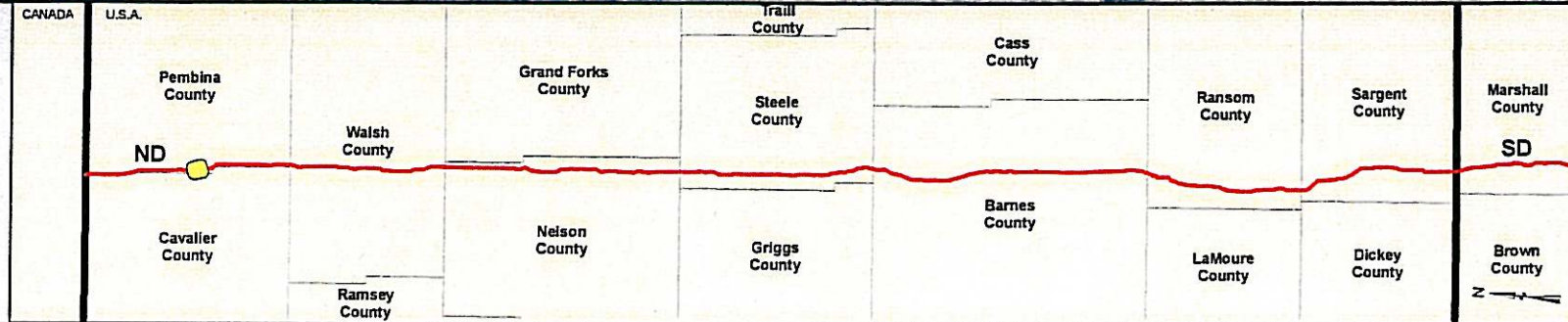
**KEYSTONE PIPELINE PROJECT**  
**SPREAD 1A ROUTE SHEETS**  
 PEMBINA COUNTY, NORTH DAKOTA

MAP PARAMETERS  
 PROJECTION: NAD83, UTM:14N  
 SCALE: 1: 6000 ; 1" = 500'



**Legend**

- MILE POST
- KEYSTONE PIPELINE - 6.23.08 CL
- ▭ COUNTY LINE
- ▭ TOWNSHIP-RANGE-SECTION LINE
- ▭ CONSTRUCTION SPREAD BREAK
- SHELTER BELTS



PREPARED BY:  
**TROW ENGINEERING CONSULTANTS INC.**  
 1300 Metropolitan Boulevard, Suite 200  
 Tallahassee, Florida, USA 32308  
 Phone: 1-850-385-5441  
 Fax: 1-850-385-5523

**Trow**

NO.	REVISION	DATE

**PRELIMINARY**

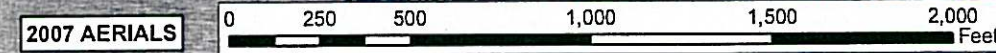
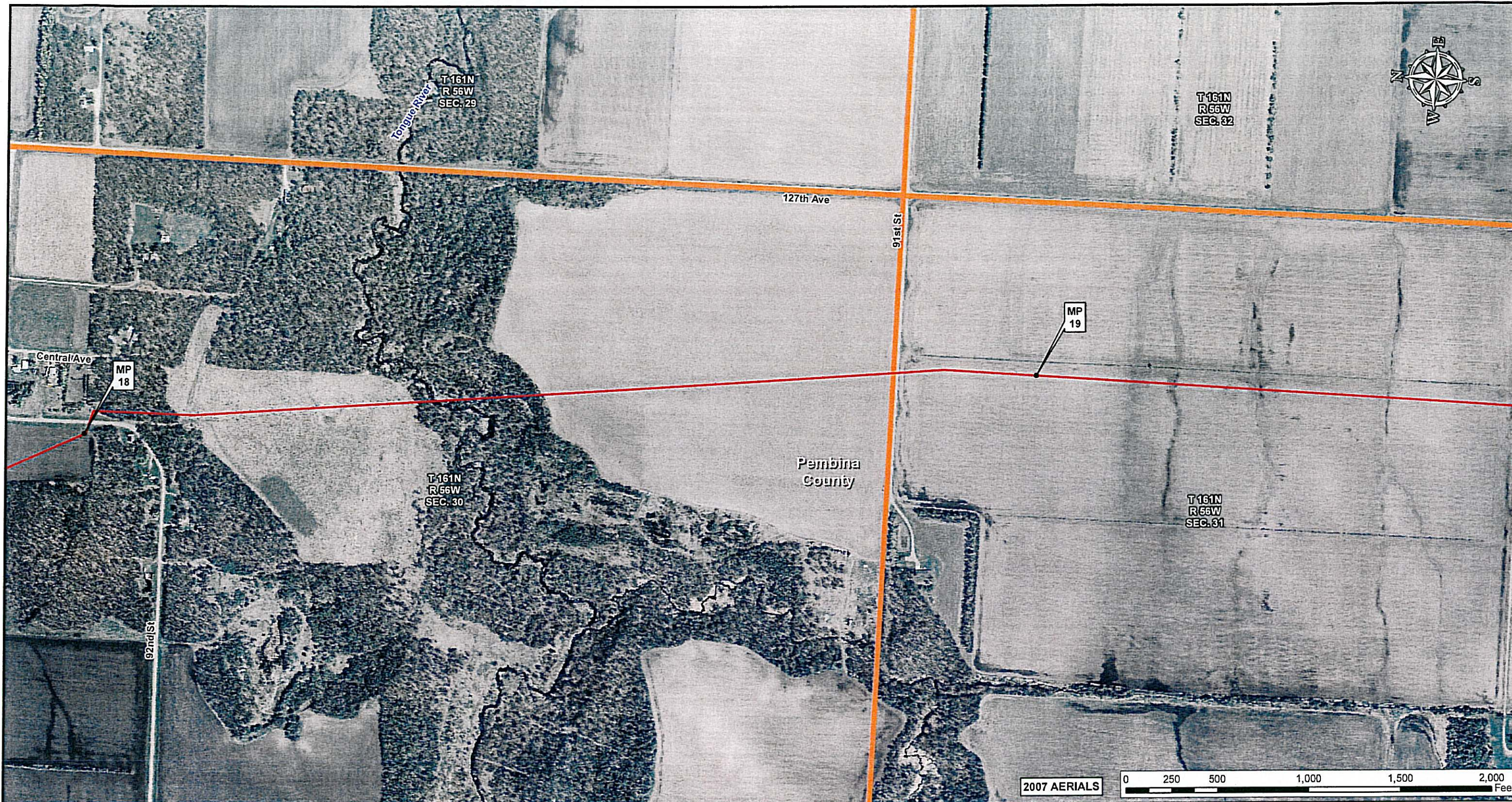
DRAWN BY	CHECKED BY	APPROVED BY	PROJECT:
GS	SS	RG	50388S

**TransCanada**  
*In business to deliver*

**KEYSTONE PIPELINE PROJECT**  
 SPREAD 1A ROUTE SHEETS  
 PEMBINA COUNTY, NORTH DAKOTA

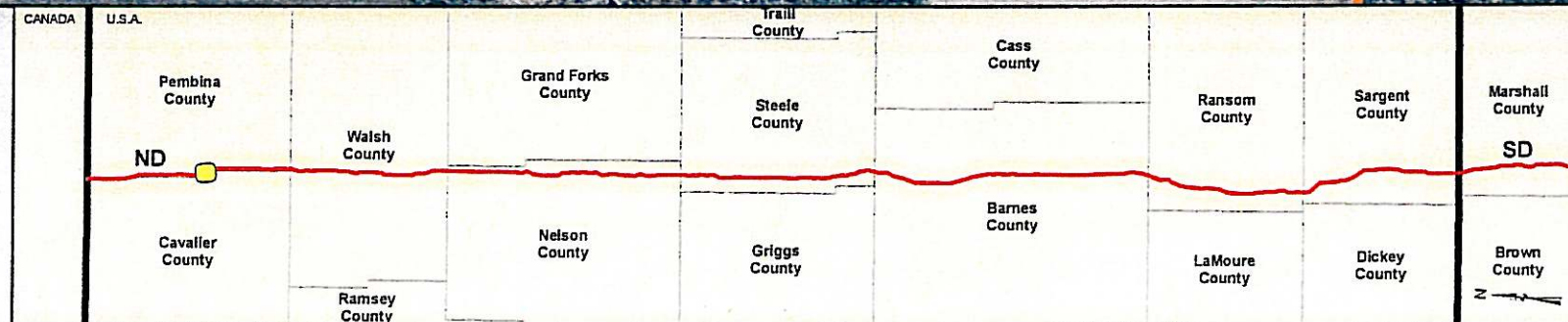
MAP PARAMETERS  
 PROJECTION: NAD83, UTM:14N  
 SCALE: 1: 6000 ; 1" = 500'

DRAWING NUMBER	SHEET	REV.
K-38-ML-9040-P-14 -A	14	0



**Legend**

- MILE POST
- KEYSTONE PIPELINE - 5.23.08 CL
- ▭ COUNTY LINE
- ▭ TOWNSHIP-RANGE-SECTION LINE
- ▭ CONSTRUCTION SPREAD BREAK
- SHELTER BELTS



PREPARED BY:  
**TROW ENGINEERING CONSULTANTS INC.**  
 1300 Metropolitan Boulevard, Suite 200  
 Tallahassee, Florida, USA 32308  
 Phone: 1-850-385-5441  
 Fax: 1-850-385-5523

**Trow**

NO.	REVISION	DATE

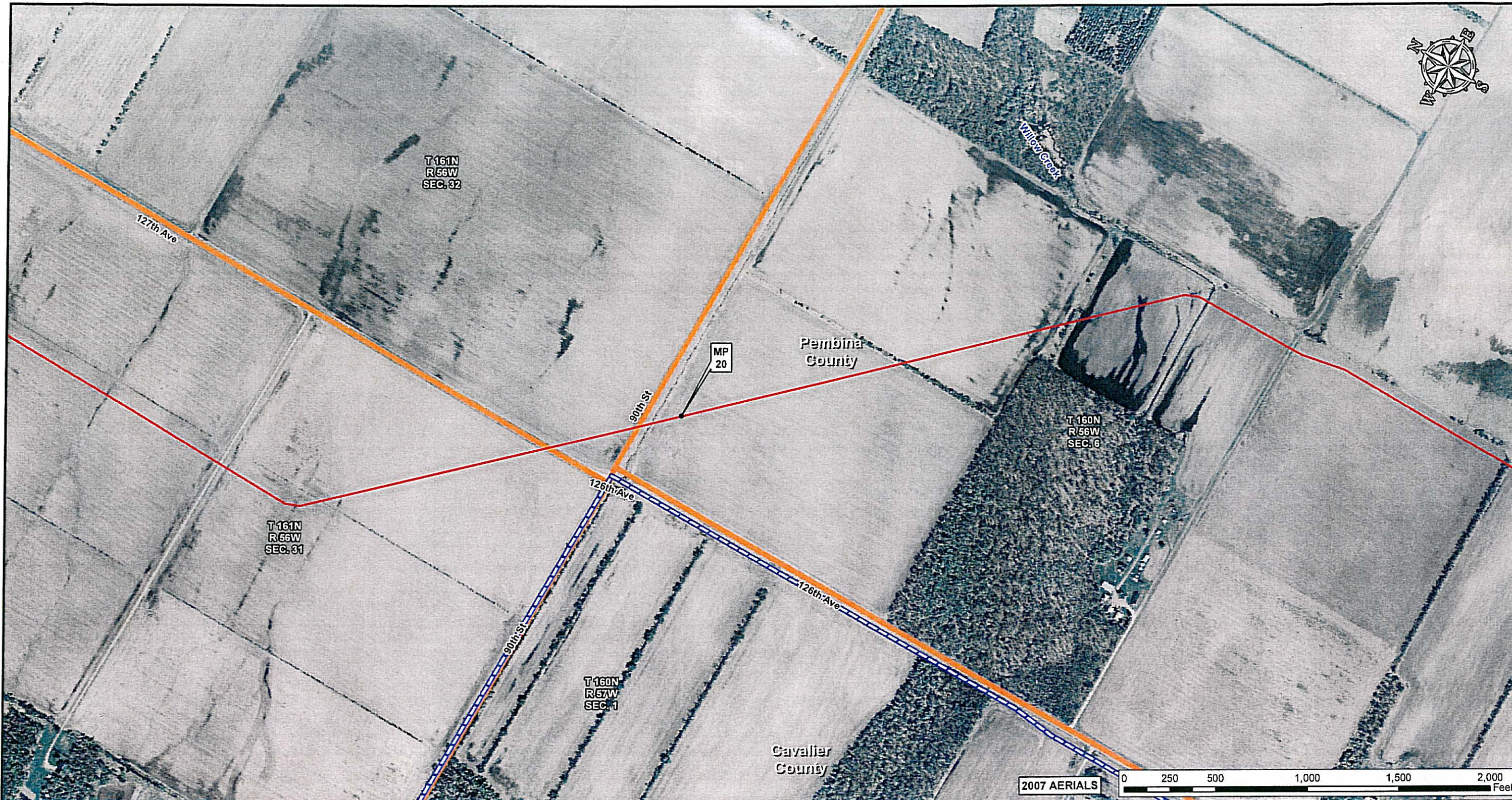
PRELIMINARY

DRAWN BY	CHECKED BY	APPROVED BY	PROJECT
GS	SS	RG	50388S

**KEYSTONE PIPELINE PROJECT**  
 SPREAD 1A ROUTE SHEETS  
 PEMBINA COUNTY, NORTH DAKOTA

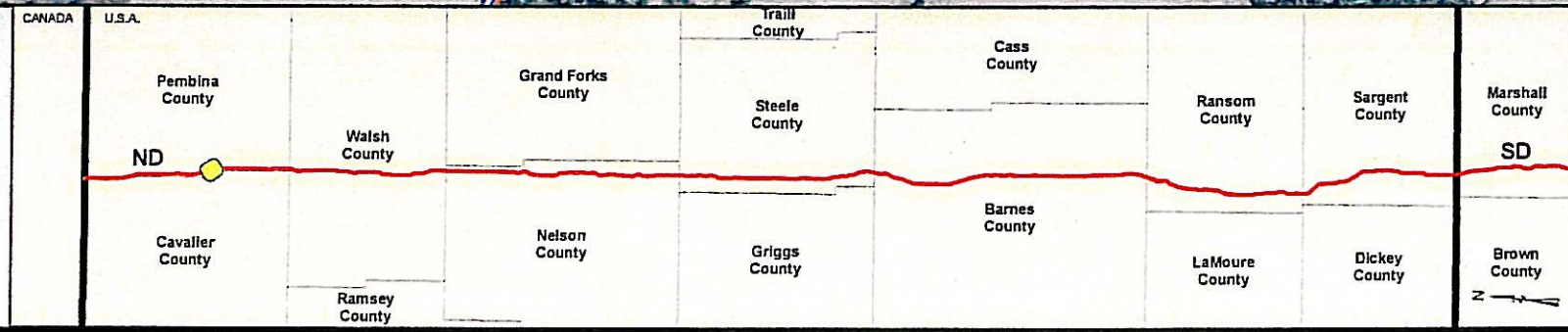
MAP PARAMETERS  
 PROJECTION: NAD83, UTM:14N  
 SCALE: 1: 6000 ; 1" = 500'

DRAWING NUMBER	SHEET	REV.
K-38-ML-9040-P-15 -A	15	0



**Legend**

- MILE POST
- KEYSTONE PIPELINE - 6.23.08 CL
- ▭ COUNTY LINE
- ▭ TOWNSHIP-RANGE-SECTION LINE
- ▭ CONSTRUCTION SPREAD BREAK
- SHELTER BELTS



PREPARED BY:  
**TROW ENGINEERING CONSULTANTS INC.**  
 1300 Metropolitan Boulevard, Suite 200  
 Tallahassee, Florida, USA 32308  
 Phone: 1-850-385-5441  
 Fax: 1-850-385-5523

**Trow**

NO.	REVISION	DATE
0	As-drawn Submitted to ND PSC June 24, 2008	6.23.08

**PRELIMINARY**

DRAWN BY	CHECKED BY	APPROVED BY	PROJECT:
GS	SS	RG	50388S

**KEYSTONE PIPELINE PROJECT**  
**SPREAD 1A ROUTE SHEETS**  
 PEMBINA COUNTY, NORTH DAKOTA

MAP PARAMETERS  
 PROJECTION: NAD83, UTM:14N  
 SCALE: 1: 6000 ; 1" = 500'

DRAWING NUMBER	SHEET	REV.
K-38-ML-9040-P-16 -A	16	0