

**GENERAL NOTES**

- 1) ALL CHAINAGES ARE IN FEET UNLESS OTHERWISE SPECIFIED.
- 2) DATUM ELEVATION AND PROJECTION ARE BASED ON MEAN SEA LEVEL AND NAD 83.
- 3) FIELD PIPE LOCATING REQUIRED TO DETERMINE PLACEMENT OF PIPELINE WITHIN PERMANENT EASEMENT.
- 4) UNLESS OTHERWISE NOTED, 48 INCHES MINIMUM COVER EXCEPT 36 INCHES IN AREAS OF CONSOLIDATED ROCK.
- 5) NO ACTUAL AS-BUILT GROUND SHOTS WERE TAKEN AT THIS LOCATION. THE PROFILE REPRESENTS A PROJECTION FROM SHOTS TAKEN AT 150' TO 250' INTERVALS.
- 6) THE TYPE OF COATING APPLIED TO THE FIELD WELDS DURING THE ORIGINAL CONSTRUCTION WAS TWO COMPONENT LIQUID EPOXY. THE COATING PRODUCTS USED WERE DENSO 7200 OR SPC SP-2888.
- 7) THE SUBSTANTIAL CONSTRUCTION COMPLETION DATE, BASED ON CALIPER PIG RUN, WAS AUGUST 11, 2009 FOR M.P. 0.30 TO M.P. 31.03 AND AUGUST 12, 2009 FOR M.P. 31.03 TO M.P. 66.93.
- 8) ORIGINAL IN-SERVICE DATE OF THE KEYSTONE PIPELINE (PHASE 1): JUNE 30, 2010.
- 9) CPS CALCULATION DATE: MAY 2010.
- 10) ORION STATION SERIES NUMBER: 1182700.
- 11) TO DETERMINE THE MILE POST AT A GIVEN LOCATION, ADD THE 3D STATION NUMBER FROM THIS SEGMENT TO STATION NUMBER 0+00 AND DIVIDE BY 5280.

**OPERATING AND TEST PRESSURE**

1. THE MAXIMUM OPERATING PRESSURE (MOP) IS 1440 PSIG.
2. THE MINIMUM TEST PRESSURE WAS 1601 PSIG.

**BILL OF MATERIALS (3D)**

ITEM NO.	DESCRIPTION	QUANTITY
1	30" O.D. X 0.438" W.T. API-5LX-70 W/FBE COATING	12,817'
3	30" O.D. X 0.516" W.T. API-5LX-70 W/FBE COATING & ABRASION RESISTANT OVERCOAT	260'
100	30" - 24" 3 DIA RAD WELD FITTING 0.437" W.T. Y-70	1 EA
	PIPELINE MARKERS	2 EA
	PIPELINE WARNING SIGNS	8 EA
	CATHODIC TEST STATION	2 EA
	AERIAL MARKER	0 EA

**REFERENCE DRAWINGS**

REF. NO.	DRAWING NO.	REV. NO.	DRAWING TITLE
	1827-00-ML-00-101	02	INTERNATIONAL BORDER TIE-IN

**REVISIONS**

NO.	DATE	REV. BY	CHKD. BY	APPRD. BY	ENV. APPR. BY	DESCRIPTION
1	5/17/08	UEI	RDG	LAC	SEC	ISSUED FOR CONSTRUCTION
2	10/17/11	UEI				ISSUED FOR AS-BUILT
						1827-03-ML-02-001
						REPLACES COVERAGE OF IFC DRAWINGS 1827-03-ML-02-001, 1827-03-ML-02-002

**ENGINEERING RECORDS**

DRAWN BY	INITIAL	DATE	ENY. APPR. BY	INITIAL	DATE
UEI		09/12/21			

CHECKED BY: [Signature]

**PROFESSIONAL ENGINEER**

NAME	STATE	LIC#	REV#	DATE
LOYS A. GRAY, III	ND	PE5714		

**SCALE:** 0 125 250 500 Feet

**TransCanada**  
In business to deliver

KEYSTONE MAINLINE (NPS 30 2008) WALHALLA SECTION

AS-BUILT ALIGNMENT

M.P. 0+00 TO M.P. 2+46  
SHEET 1 OF 14 SHEETS  
STA. 0+00 TO STA. 130+07 (3D)

DRAWING NO. 1827-03-ML-02-001 REV. 2

**PIPELINE SCHEMATIC**

STATION	DESCRIPTION
0+00	MATCHLINE 0+00
0+00	0+00 BEGIN STA.
0+32	0+32 P.I. 24'25'00" L.T.
0+64	0+64 BORDER TIE-IN
2+52	2+52 4.5' CVR.
9+09	9+09 5.2' CVR.
16+99	16+99 4.9' CVR.
20+10	20+10 4.4' CVR.
23+88	23+88 P.I. 13'13'20" R.L.
24+50	24+50 P.I. 11'42'30" R.L.
30+08	30+08 WATER EDGE
30+25	30+25 1.7' CVR.
30+38	30+38 WATER EDGE
33+19	33+19 5.2' CVR.
34+42	34+42 EDGE OF ROAD
34+48	34+48 CL. 10'14" STREET
34+50	34+50 CL. 10'14" STREET
34+70	34+70 8.0' CVR.
34+75	34+75 6.3' CVR.
34+77	34+77 ROAD BAR DITCH
39+64	39+64 4.3' CVR.
47+71	47+71 5.7' CVR.
50+86	50+86 4.1' CVR.
52+80	52+80 M.P. 1
66+42	66+42 5.6' CVR.
77+40	77+40 4.6' CVR.
86+83	86+83 14.7' CVR. ROAD
87+12	87+12 EDGE OF ROAD
87+15	87+15 EDGE OF ROAD
87+34	87+34 EDGE OF ROAD
87+86	87+86 ROAD BAR DITCH
87+88	87+88 ROAD BAR DITCH
102+70	102+70 4.9' CVR.
109+60	109+60 M.P. 2
119+39	119+39 6.0' CVR.
129+48	129+48 5.5' CVR.
130+07	MATCHLINE 130+07

**TEST SECTIONS (3D)**

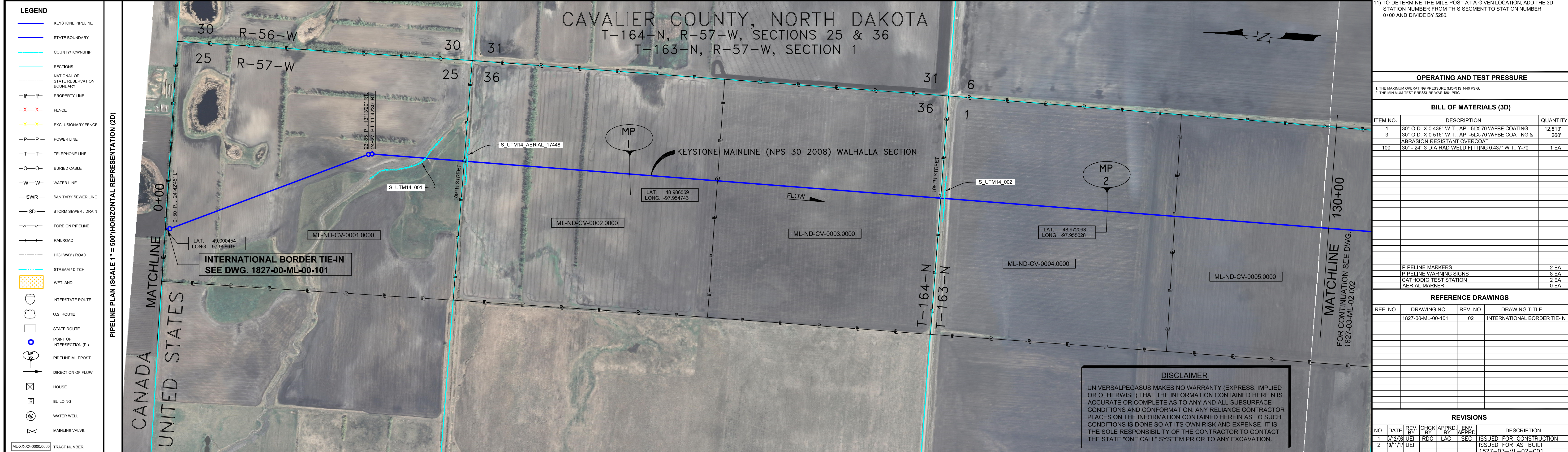
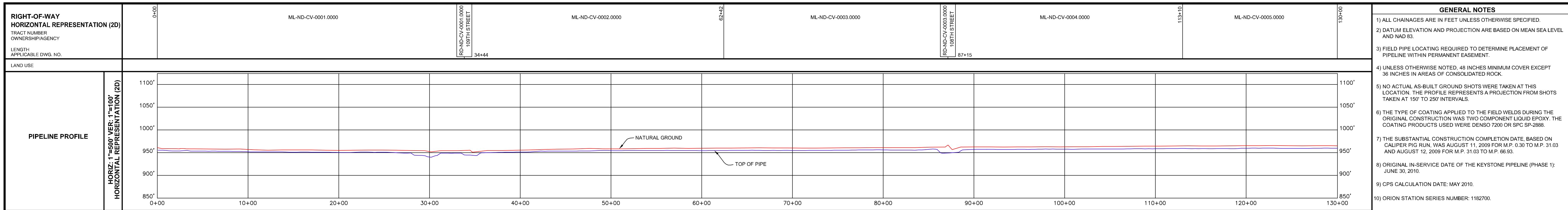
TEST SECTION 1A-1  
ILTO-019-2010

**ENVIRONMENTAL MITIGATION/RECLAMATION STATIONS (2D)**

STATION	REPRESENTATION	DESCRIPTION
0+00	①	FOR INTERNATIONAL BORDER TIE-IN SEE DWG. 1827-00-ML-00-101
3+345	①	3,345' FBE
4+666	①	4,666' FBE
34+09	③	100' FBE & ARO BR
4+179	①	4,179' FBE
4+164	①	4,164' FBE
5,154'	①	5,154' FBE
86+83	③	160' FBE & ARO BR
88+23	①	88,230' FBE
4,184'	①	4,184' FBE

**ENVIRONMENTAL MITIGATION/RECLAMATION STATIONS (3D)**

STATION	REPRESENTATION	DESCRIPTION
0+00	①	FOR INTERNATIONAL BORDER TIE-IN SEE DWG. 1827-00-ML-00-101
3+345	①	3,345' FBE
4+666	①	4,666' FBE
34+09	③	100' FBE & ARO BR
4+179	①	4,179' FBE
4+164	①	4,164' FBE
5,154'	①	5,154' FBE
86+83	③	160' FBE & ARO BR
88+23	①	88,230' FBE
4,184'	①	4,184' FBE



**LEGEND**

- KEYSTONE PIPELINE
- STATE BOUNDARY
- COUNTY/TOWNSHIP
- SECTIONS
- NATIONAL OR STATE RESERVATION BOUNDARY
- PROPERTY LINE
- FENCE
- EXCLUSIONARY FENCE
- POWER LINE
- TELEPHONE LINE
- BURIED CABLE
- WATER LINE
- SANITARY SEWER LINE
- STORM SEWER / DRAIN
- FOREIGN PIPELINE
- RAILROAD
- HIGHWAY / ROAD
- STREAM / DITCH
- WETLAND
- INTERSTATE ROUTE
- U.S. ROUTE
- STATE ROUTE
- POINT OF INTERSECTION (PI)
- PIPELINE MILEPOST
- DIRECTION OF FLOW
- HOUSE
- BUILDING
- WATER WELL
- MAINLINE VALVE

**TEST SECTIONS (3D)**

TOPSOIL SALVAGE METHOD

STREAMS

WETLANDS

TIMING CONSTRAINTS

**STATIONS**

MONITORING

RECLAMATION

SPECIAL CONSIDERATIONS

Z:\00\_KEYSTONE\_AS\_BUILT\Alignment sheets for North Dakota\ND1827-001.dwg, 3/8/2011 3:05:25 PM, pdfFactory.p3