

**RIGHT-OF-WAY HORIZONTAL REPRESENTATION (2D)**  
TRACT NUMBER  
LENGTH APPLICABLE DWG. NO.

**LAND USE**

**PIPELINE PROFILE**  
HORIZ: 1"=500' VER: 1"=100'  
HORIZONTAL REPRESENTATION (2D)

**LEGEND**

**PIPELINE PLAN (SCALE 1" = 500')**  
HORIZONTAL REPRESENTATION (2D)

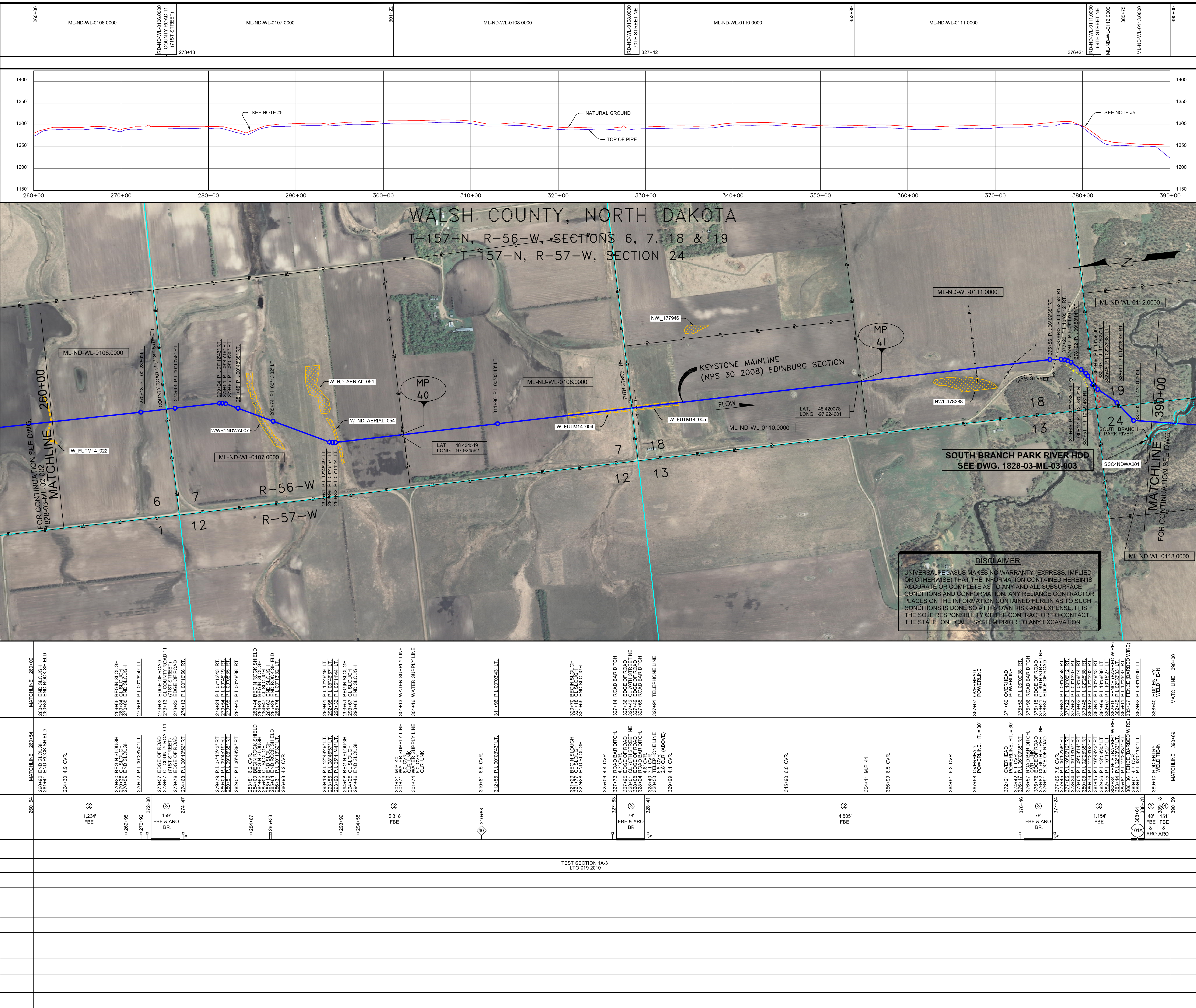
**PIPELINE SCHEMATIC**

**HORIZONTAL STATIONS (2D)**

**SLOPE STATIONS (3D)**

**TEST SECTIONS (3D)**

**ENVIRONMENTAL MITIGATION/RECLAMATION STATIONS (2D)**



**GENERAL NOTES**

- 1) ALL CHAINAGES ARE IN FEET UNLESS OTHERWISE SPECIFIED.
- 2) DATUM ELEVATION AND PROJECTION ARE BASED ON MEAN SEA LEVEL AND NAD 83.
- 3) FIELD PIPE LOCATING REQUIRED TO DETERMINE PLACEMENT OF PIPELINE WITHIN PERMANENT EASEMENT.
- 4) UNLESS OTHERWISE NOTED, 48 INCHES MINIMUM COVER EXCEPT 36 INCHES IN AREAS OF CONSOLIDATED ROCK.
- 5) NO ACTUAL AS-BUILT GROUND SHOTS WERE TAKEN AT THIS LOCATION. THE PROFILE REPRESENTS A PROJECTION FROM SHOTS TAKEN AT 150' TO 250' INTERVALS.
- 6) THE TYPE OF COATING APPLIED TO THE FIELD WELDS DURING THE ORIGINAL CONSTRUCTION WAS TWO COMPONENT LIQUID EPOXY. THE COATING PRODUCTS USED WERE DENS0 7200 OR SPC SP-2888.
- 7) THE SUBSTANTIAL CONSTRUCTION COMPLETION DATE, BASED ON CALIPER PIG RUN, WAS AUGUST 12, 2009 FOR M.P. 31.03 TO M.P. 66.93 AND AUGUST 16, 2009 FOR M.P. 66.90 TO M.P. 88.54.
- 8) ORIGINAL IN-SERVICE DATE OF THE KEYSTONE PIPELINE (PHASE 1): JUNE 30, 2010.
- 9) CPS CALCULATION DATE: MAY 2010.
- 10) ORION STATION SERIES NUMBER: 1182700.
- 11) TO DETERMINE THE MILE POST AT A GIVEN LOCATION, ADD THE 3D STATION NUMBER FROM THIS SEGMENT TO STATION NUMBER 1810+69 AND DIVIDE BY 5280.

**OPERATING AND TEST PRESSURE**

1. THE MAXIMUM OPERATING PRESSURE (MOP) IS 1440 PSIG.
2. THE MINIMUM TEST PRESSURE WAS 1601 PSIG.

**BILL OF MATERIALS (3D)**

ITEM NO.	DESCRIPTION	QUANTITY
2	30" O.D. X 0.388" W.T. API-5LX-70 WFBE COATING	12,509'
3	30" O.D. X 0.516" W.T. API-5LX-70 WFBE COATING & ABRASION RESISTANT OVERCOAT	355'
4	30" O.D. X 0.622" W.T. API-5LX-70 WFBE COATING & ABRASION RESISTANT OVERCOAT	151'
101A	30" x 45" 3 DIA RAD WELD FITTING, 0.428" W.T., Y-70	1 EA

**REFERENCE DRAWINGS**

REF. NO.	DRAWING NO.	REV. NO.	DRAWING TITLE
HDD	1828-03-ML-03-003	07	SOUTH BRANCH PARK RIVER HDD

**REVISIONS**

NO.	DATE	REV. BY	CHKD. BY	APPRD. BY	DESCRIPTION
1	5/17/08	UEI	RDG	LAG	ISSUED FOR CONSTRUCTION
2	8/17/08	UEI	RDG	LAG	ISSUED FOR AS-BUILT
					1828-03-ML-02-003 REPLACES COVERAGE OF IFC DRAWINGS
					1828-03-ML-02-004
					1828-03-ML-02-005

**ENGINEERING RECORDS**

DRAWN BY	INITIAL	DATE	ENY. APPRD.	INITIAL	DATE
UEI		10/01/04			

**PROFESSIONAL ENGINEER**

NAME	STATE	LIC#	REV#	DATE
LOYS A. GRAY, III	ND	PE5714		

**SCALE:** 0 125 250 500 Feet

**TransCanada**  
In business to deliver

KEYSTONE MAINLINE (NPS 30 2008) EDINBURG SECTION  
SHEET 3 OF 18 SHEETS

**AS-BUILT ALIGNMENT**  
M.P. 39.23 TO M.P. 41.69  
SHEET 3 OF 18 SHEETS  
STA. 260+54 TO STA. 390+69 (3D)

DRAWING NO. 1828-03-ML-02-003 REV. 2

Z:\00\_KEYSTONE\_AS\_BUILT\T4-alignment sheets for North Dakota\ND1828\_03-003.dwg, 3/9/2011 8:51:30 AM, pdfFactory.p3