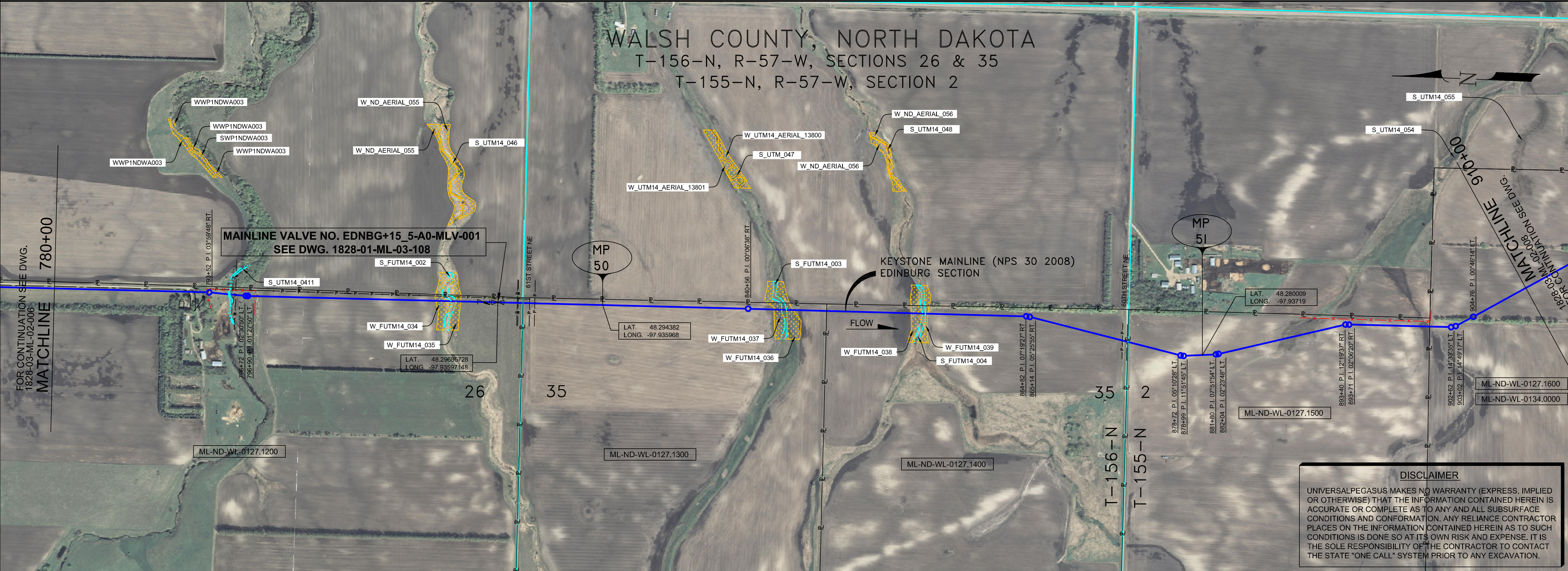
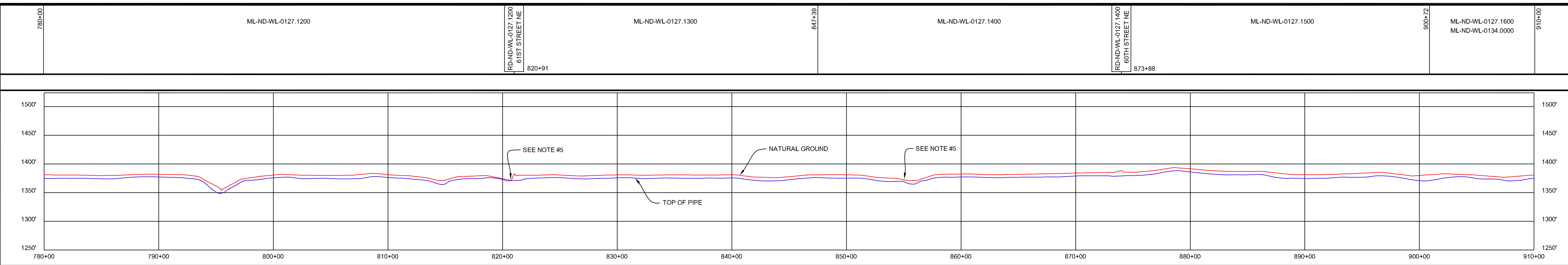


RIGHT-OF-WAY HORIZONTAL REPRESENTATION (2D)	TRACT NUMBER	ML-ND-WL-0127.1200	ML-ND-WL-0127.1300	873.38	ML-ND-WL-0127.1400	ML-ND-WL-0127.1500	ML-ND-WL-0127.1600 ML-ND-WL-0134.0000
	LENGTH APPLICABLE DWG. NO.						
LAND USE	PIPELINE PROFILE						
	HORIZONTAL REPRESENTATION (2D)						
LEGEND	PIPELINE PLAN (SCALE 1" = 500') HORIZONTAL REPRESENTATION (2D)						
	HORIZONTAL STATIONS (2D)						
PIPELINE SCHEMATIC	SLOPE STATIONS (3D)						
	TEST SECTIONS (3D)						
ENVIRONMENTAL MITIGATION/RECLAMATION STATIONS (2D)	TEST SECTION 1A-3 ILTO-019-2010						
	STATIONS						
MONITORING							
RECLAMATION							
SPECIAL CONSIDERATIONS							



- GENERAL NOTES**
- 1) ALL CHAINAGES ARE IN FEET UNLESS OTHERWISE SPECIFIED.
 - 2) DATUM ELEVATION AND PROJECTION ARE BASED ON MEAN SEA LEVEL AND NAD 83.
 - 3) FIELD PIPE LOCATING REQUIRED TO DETERMINE PLACEMENT OF PIPELINE WITHIN PERMANENT EASEMENT.
 - 4) UNLESS OTHERWISE NOTED, 48 INCHES MINIMUM COVER EXCEPT 36 INCHES IN AREAS OF CONSOLIDATED ROCK.
 - 5) NO ACTUAL AS-BUILT GROUND SHOTS WERE TAKEN AT THIS LOCATION. THE PROFILE REPRESENTS A PROJECTION FROM SHOTS TAKEN AT 150' TO 250' INTERVALS.
 - 6) THE TYPE OF COATING APPLIED TO THE FIELD WELDS DURING THE ORIGINAL CONSTRUCTION WAS TWO COMPONENT LIQUID EPOXY. THE COATING PRODUCTS USED WERE DENSO 7200 OR SPC SP-2888.
 - 7) THE SUBSTANTIAL CONSTRUCTION COMPLETION DATE, BASED ON CALIPER PIG RUN, WAS AUGUST 12, 2009 FOR M.P. 31.03 TO M.P. 66.93 AND AUGUST 16, 2009 FOR M.P. 66.90 TO M.P. 88.54.
 - 8) ORIGINAL IN-SERVICE DATE OF THE KEYSTONE PIPELINE (PHASE 1): JUNE 30, 2010.
 - 9) CPS CALCULATION DATE: MAY 2010.
 - 10) ORION STATION SERIES NUMBER: 1162700.
 - 11) TO DETERMINE THE MILE POST AT A GIVEN LOCATION, ADD THE 3D STATION NUMBER FROM THIS SEGMENT TO STATION NUMBER 1810+69 AND DIVIDE BY 5280.

OPERATING AND TEST PRESSURE

1. THE MAXIMUM OPERATING PRESSURE (MOP) IS 1440 PSIG.
2. THE MINIMUM TEST PRESSURE WAS 900 PSIG.

BILL OF MATERIALS (3D)

ITEM NO.	DESCRIPTION	QUANTITY
1	30" O.D. X 0.438" W.T. API 5L-X70 WFBE COATING	167'
2	30" O.D. X 0.386" W.T. API 5L-X70 WFBE COATING	12,662'
3	30" O.D. X 0.516" W.T. API 5L-X70 WFBE COATING & ABRASION RESISTANT OVERCOAT	1607'
405	MAINLINE VALVE ASSEMBLY	
	EDNBG+15_5-A0-MLV-001 (24")	1 EA

REFERENCE DRAWINGS

REF. NO.	DRAWING NO.	REV. NO.	DRAWING TITLE
405	1828-03-ML-02-008	04	MAINLINE VALVE
	1828-03-ML-02-010		EDNBG+15_5-A0-MLV-001
	1828-03-ML-02-011		MAINLINE VALVE
	1828-03-ML-02-012		EDNBG+15_5-A0-MLV-001

REVISIONS

NO.	DATE	REV. BY	CHECKED BY	APPROVED BY	DESCRIPTION
1	5/17/08	UEI	RDG	LAG	ISSUED FOR CONSTRUCTION
2	10/17/08	UEI			ISSUED FOR AS-BUILT

ENGINEERING RECORDS

DRAWN BY	INITIAL	DATE	ENY. APPRD.	INITIAL	DATE
UEI		10/01/04	ENY.		

PROFESSIONAL ENGINEER

NAME	STATE	LIC#	REV#	DATE
LOYS A. GRAY, III	ND	PE5714		

SCALE: 0 125 250 500 Feet

TransCanada
In business to deliver

KEYSTONE MAINLINE (NPS 30 2008) EDINBURG SECTION

SCALE: SPREAD 1A DISCIPLINE 03

AS-BUILT ALIGNMENT

M.P. 49.09 TO M.P. 51.56
SHEET 7 OF 18 SHEETS

STA. 781+37 TO STA. 911+50 (3D)

DRAWING NO. 1828-03-ML-02-007 REV. 2

DISCLAIMER

UNIVERSALPEGASUS MAKES NO WARRANTY (EXPRESS, IMPLIED OR OTHERWISE) THAT THE INFORMATION CONTAINED HEREIN IS ACCURATE OR COMPLETE AS TO ANY AND ALL SUBSURFACE CONDITIONS AND CONFORMATION. ANY RELIANCE CONTRACTOR PLACES ON THE INFORMATION CONTAINED HEREIN AS TO SUCH CONDITIONS IS DONE SO AT ITS OWN RISK AND EXPENSE. IT IS THE SOLE RESPONSIBILITY OF THE CONTRACTOR TO CONTACT THE STATE "ONE CALL" SYSTEM PRIOR TO ANY EXCAVATION.

Z:\00_KEYSTONE_AS_BUILT\14-alignment sheets for North Dakota\ND1828_03-ML-02-007.dwg, 3/9/2011 9:05:02 AM, pdfFactory.pd