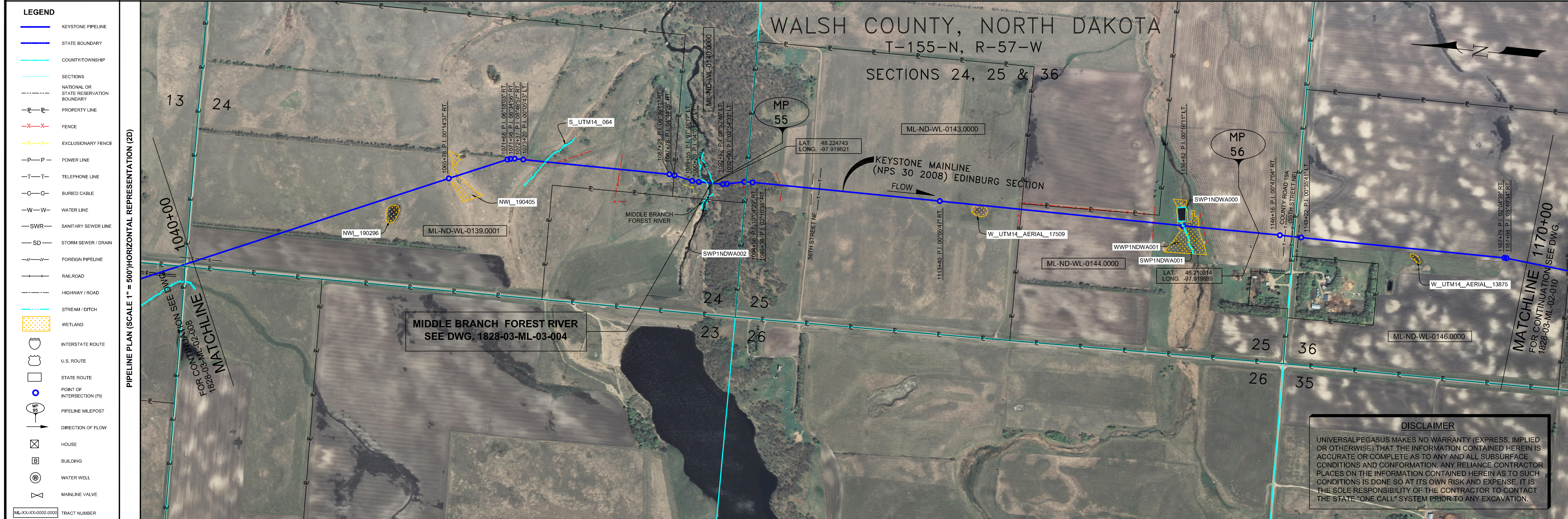


- GENERAL NOTES**
- 1) ALL CHAINAGES ARE IN FEET UNLESS OTHERWISE SPECIFIED.
 - 2) DATUM ELEVATION AND PROJECTION ARE BASED ON MEAN SEA LEVEL AND NAD 83.
 - 3) FIELD PIPE LOCATING REQUIRED TO DETERMINE PLACEMENT OF PIPELINE WITHIN PERMANENT EASEMENT.
 - 4) UNLESS OTHERWISE NOTED, 48 INCHES MINIMUM COVER EXCEPT 36 INCHES IN AREAS OF CONSOLIDATED ROCK.
 - 5) NO ACTUAL AS-BUILT GROUND SHOTS WERE TAKEN AT THIS LOCATION. THE PROFILE REPRESENTS A PROJECTION FROM SHOTS TAKEN AT 150' TO 250' INTERVALS.
 - 6) THE TYPE OF COATING APPLIED TO THE FIELD WELDS DURING THE ORIGINAL CONSTRUCTION WAS TWO COMPONENT LIQUID EPOXY. THE COATING PRODUCTS USED WERE DENSO 7200 OR SPC SP-2888.
 - 7) THE SUBSTANTIAL CONSTRUCTION COMPLETION DATE, BASED ON CALIPER PIG RUN, WAS AUGUST 12, 2009 FOR M.P. 31.03 TO M.P. 66.93 AND AUGUST 16, 2009 FOR M.P. 66.90 TO M.P. 88.54.
 - 8) ORIGINAL IN-SERVICE DATE OF THE KEYSTONE PIPELINE (PHASE 1): JUNE 30, 2010.
 - 9) CPS CALCULATION DATE: MAY 2010
 - 10) ORION STATION SERIES NUMBER: 1182700.
 - 11) TO DETERMINE THE MILE POST AT A GIVEN LOCATION, ADD THE 3D STATION NUMBER FROM THIS SEGMENT TO STATION NUMBER 1810+69 AND DIVIDE BY 5280.



OPERATING AND TEST PRESSURE

1. THE MAXIMUM OPERATING PRESSURE (MOP) IS 1440 PSIG.
2. THE MINIMUM TEST PRESSURE WAS 160 PSIG.

BILL OF MATERIALS (3D)

ITEM NO.	DESCRIPTION	QUANTITY
2	30" O. D. X 0.388" W. T., API-5LX-70 WFBE COATING	12,723'
3	30" O. D. X 0.516" W. T., API-5LX-70 WFBE COATING & ABRASION RESISTANT OVERCOAT	305'

REFERENCE DRAWINGS

REF. NO.	DRAWING NO.	REV. NO.	DRAWING TITLE
D.C.	1828-03-ML-03-004	05	MIDDLE BRANCH FOREST RIVER OPEN CUT

REVISIONS

NO.	DATE	REV. BY	CHKD. BY	APP'D. BY	DESCRIPTION
1	5/17/08	UEI	RDG	LAG	ISSUED FOR CONSTRUCTION
2	5/27/08	UEI	RDG	LAG	ADDED CROSSING DETAILS
3	3/17/12	UEI	RDG	LAG	ISSUED FOR AS-BUILT
					1828-03-ML-02-009
					REPLACES COVERAGE OF IFC
					IFC DRAWINGS
					1828-03-ML-02-013
					1828-03-ML-02-014
					1828-03-ML-02-015

PIPELINE SCHEMATIC

SYMBOL	DESCRIPTION
[Symbol]	HEAVY WALL PIPE
[Symbol]	WELD FITTING
[Symbol]	TRANSITION PIECE
[Symbol]	CASING PIPE
[Symbol]	CONCRETE COATING
[Symbol]	SET-ON WEIGHTS
[Symbol]	PIPELINE WARNING SIGN
[Symbol]	PIPELINE MARKER
[Symbol]	MATERIAL ITEM
[Symbol]	GROUNDING MAT
[Symbol]	ZINC RIBBON
[Symbol]	AERIAL MARKER
[Symbol]	CATHODIC TEST STATION
[Symbol]	CHECK VALVE
[Symbol]	OPEN CUT
[Symbol]	BORE
[Symbol]	DRINKING WATER USA
[Symbol]	ECOLOGICAL USA
[Symbol]	HIGHLY POPULATED AREA
[Symbol]	OPERATOR (KEYSTONE) DEFINED
[Symbol]	OTHER POPULATED AREA
[Symbol]	SOURCE WATER PROTECTION AREA
[Symbol]	WELLHEAD PROTECTION AREA

ENGINEERING RECORDS

DRAWN BY	INITIAL	DATE	ENY APP'D.	INITIAL	DATE
UEI		10/01/04	ENY APP'D.		

PROFESSIONAL ENGINEER

NAME	STATE	UC#	REV#	DATE
LOYS A. GRAY, III	ND	PE5714		

TEST SECTIONS (3D)

TEST SECTION	STATIONING	DESCRIPTION
TEST SECTION 1A-3	1170+00 TO 1171+97	ILTO-019-2010

SCALE: 0 125 250 500 Feet

TransCanada
In business to deliver

KEYSTONE MAINLINE (NPS 30 2008) EDINBURG SECTION

AS-BUILT ALIGNMENT

M.P. 54.02 TO M.P. 56.49
SHEET 9 OF 18 SHEETS
STA. 1041+69 TO STA. 1171+97 (3D)

DRAWING NO. 1828-03-ML-02-009 REV. 3

Z:\00_KEYSTONE_AS_BUILT\14-alignment sheets for North Dakota\ND1828_AS_BUILT\14-alignment sheets for North Dakota\ND1828-03-009.dwg, 3/9/2011 9:10:10 AM, pdfFactory.p3