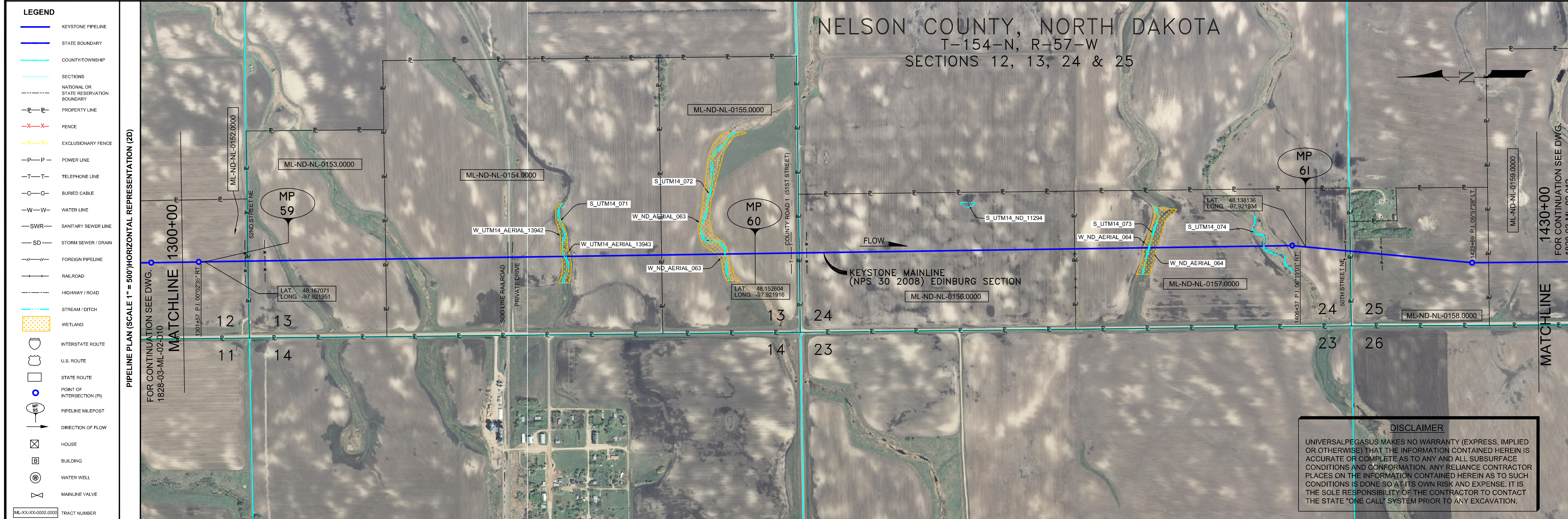


- GENERAL NOTES**
- 1) ALL CHAINAGES ARE IN FEET UNLESS OTHERWISE SPECIFIED.
  - 2) DATUM ELEVATION AND PROJECTION ARE BASED ON MEAN SEA LEVEL AND NAD 83.
  - 3) FIELD PIPE LOCATING REQUIRED TO DETERMINE PLACEMENT OF PIPELINE WITHIN PERMANENT EASEMENT.
  - 4) UNLESS OTHERWISE NOTED, 48 INCHES MINIMUM COVER EXCEPT 36 INCHES IN AREAS OF CONSOLIDATED ROCK.
  - 5) NO ACTUAL AS-BUILT GROUND SHOTS WERE TAKEN AT THIS LOCATION. THE PROFILE REPRESENTS A PROJECTION FROM SHOTS TAKEN AT 150' TO 250' INTERVALS.
  - 6) THE TYPE OF COATING APPLIED TO THE FIELD WELDS DURING THE ORIGINAL CONSTRUCTION WAS TWO COMPONENT LIQUID EPOXY. THE COATING PRODUCTS USED WERE DENSO 7200 OR SPC SP-2888.
  - 7) THE SUBSTANTIAL CONSTRUCTION COMPLETION DATE, BASED ON CALIPER PIG RUN, WAS AUGUST 12, 2009 FOR M.P. 31.03 TO M.P. 66.93 AND AUGUST 16, 2009 FOR M.P. 66.90 TO M.P. 88.54.
  - 8) ORIGINAL IN-SERVICE DATE OF THE KEYSTONE PIPELINE (PHASE 1): JUNE 30, 2010.
  - 9) CPS CALCULATION DATE: MAY 2010.
  - 10) ORION STATION SERIES NUMBER: 1182700.
  - 11) TO DETERMINE THE MILE POST AT A GIVEN LOCATION, ADD THE 3D STATION NUMBER FROM THIS SEGMENT TO STATION NUMBER 1810+69 AND DIVIDE BY 5280.



- OPERATING AND TEST PRESSURE**
1. THE MAXIMUM OPERATING PRESSURE (MOP) IS 1440 PSIG.
  2. THE MINIMUM TEST PRESSURE WAS 1801 PSIG.

**BILL OF MATERIALS (3D)**

ITEM NO.	DESCRIPTION	QUANTITY
2	30" O.D. X 0.388" W.T., API-5LX-70 WFBE COATING	12,401'
3	30" O.D. X 0.516" W.T., API-5LX-70 WFBE COATING & ABRASION RESISTANT OVERCOAT	481'
4	30" O.D. X 0.622" W.T., API-5LX-70 WFBE COATING & ABRASION RESISTANT OVERCOAT	126'

ITEM	QUANTITY
PIPELINE MARKERS	4 EA
PIPELINE WARNING SIGNS	8 EA
CATHODIC TEST STATION	4 EA
AERIAL MARKER	1 EA

**PIPELINE SCHEMATIC**

STATION	DESCRIPTION
1302+37	MATCHLINE 1302+37
1302+48	4.0' CVR
1303+98	P.I. 00'02'35" RT.
1304+51	M.P. 59
1306+01	WATER SUPPLY LINE
1306+38	WATER SUPPLY LINE
1306+49	EDGE OF ROAD
1306+73	EDGE OF ROAD
1307+91	WATER SUPPLY LINE
1307+99	4.7' CVR
1311+42	BEGIN SLOUGH
1311+50	END SLOUGH
1312+44	END SLOUGH
1312+49	1.3' CVR
1313+00	EDGE OF ROAD
1313+03	EDGE OF ROAD
1313+10	EDGE OF ROAD
1313+15	EDGE OF ROAD
1313+23	TOP OF ROAD
1313+36	TOP OF ROAD
1313+42	EDGE OF ROAD
1313+46	EDGE OF ROAD
1313+48	EDGE OF ROAD
1318+10	4.7' CVR
1336+43	BEGIN SLOUGH
1336+74	END SLOUGH
1337+21	END SLOUGH
1346+62	6.3' CVR
1351+44	4.9' CVR
1354+43	WATER EDGE
1354+47	WATER EDGE
1357+31	M.P. 60
1358+35	TELEPHONE LINE
1358+46	5.5' CVR (ABOVE)
1361+40	EDGE OF ROAD
1361+43	EDGE OF ROAD
1361+51	EDGE OF ROAD
1361+56	EDGE OF ROAD
1362+24	WATER SUPPLY LINE
1362+35	1.5' CVR (ABOVE)
1384+65	TOP BANK
1384+69	TOP BANK
1384+71	TOP BANK
1404+81	4.8' CVR
1405+86	TOP BANK
1405+86	TOP BANK
1405+86	TOP BANK
1408+81	P.I. 08'10'03" RT.
1410+11	M.P. 61
1413+34	TELEPHONE LINE
1414+15	6.1' CVR (ABOVE)
1414+15	ROAD BAR DITCH
1414+32	EDGE OF ROAD
1414+40	0.5' CVR
1414+48	EDGE OF ROAD
1417+48	OVERHEAD POWERLINE HT. = 25'
1423+69	P.I. 05'57'28" LT.
1432+45	BEGIN SLOUGH
1432+47	END SLOUGH
1432+45	MATCHLINE 1432+45

**REFERENCE DRAWINGS**

REF. NO.	DRAWING NO.	REV. NO.	DRAWING TITLE

**REVISIONS**

NO.	DATE	REV. BY	CHKD. BY	APPD. BY	DESCRIPTION
1	5/17/08	UEI	RDG	LAG	ISSUED FOR CONSTRUCTION
2	8/11/08	UEI	RDG	LAG	ISSUED FOR AS-BUILT
					1828-03-ML-02-011
					REPLACES COVERAGE OF IFC DRAWINGS.
					1828-03-ML-02-017
					1828-03-ML-02-018

**ENGINEERING RECORDS**

DRAWN BY	INITIAL	DATE	ENY. APPRD.	INITIAL	DATE
UEI		10/01/04			

**PROFESSIONAL ENGINEER**

NAME	STATE	LIC#	REV#	DATE
LOYS A. GRAY, III	ND	PE5714		

**SCALE:** 0 125 250 500 Feet

**TransCanada**  
In business to deliver

KEYSTONE MAINLINE (NPS 30 2008) EDINBURG SECTION  
SHEET 11 OF 18 SHEETS

**AS-BUILT ALIGNMENT**

M.P. 58.96 TO M.P. 61.42  
SHEET 11 OF 18 SHEETS

STA. 1302+37 TO STA. 1432+45 (3D)

DRAWING NO. 1828-03-ML-02-011

**ENVIRONMENTAL MITIGATION/RECLAMATION STATIONS (2D)**

STATION	REPRESENTATION (3D)	DESCRIPTION
1302+37	②	FBE
1304+51	③	FBE & ARO
1306+01	③	FBE & ARO
1306+38	③	FBE & ARO
1306+49	②	FBE
1306+73	②	FBE
1307+91	③	FBE & ARO
1307+99	③	FBE & ARO
1311+42	②	FBE
1311+50	②	FBE
1312+44	②	FBE
1312+49	②	FBE
1313+00	③	FBE & ARO
1313+03	③	FBE & ARO
1313+10	③	FBE & ARO
1313+15	③	FBE & ARO
1313+23	③	FBE & ARO
1313+36	③	FBE & ARO
1313+42	③	FBE & ARO
1313+46	③	FBE & ARO
1313+48	③	FBE & ARO
1318+10	②	FBE
1336+43	②	FBE
1336+74	②	FBE
1337+21	②	FBE
1346+62	②	FBE
1351+44	②	FBE
1354+43	②	FBE
1354+47	②	FBE
1357+31	②	FBE
1358+35	②	FBE
1358+46	②	FBE
1361+40	②	FBE
1361+43	②	FBE
1361+51	②	FBE
1361+56	②	FBE
1362+24	②	FBE
1362+35	②	FBE
1384+65	②	FBE
1384+69	②	FBE
1384+71	②	FBE
1404+81	②	FBE
1405+86	②	FBE
1405+86	②	FBE
1405+86	②	FBE
1408+81	②	FBE
1410+11	②	FBE
1413+34	②	FBE
1414+15	②	FBE
1414+15	②	FBE
1414+32	②	FBE
1414+40	②	FBE
1414+48	②	FBE
1417+48	②	FBE
1423+69	②	FBE
1432+45	②	FBE
1432+47	②	FBE
1432+45	②	FBE