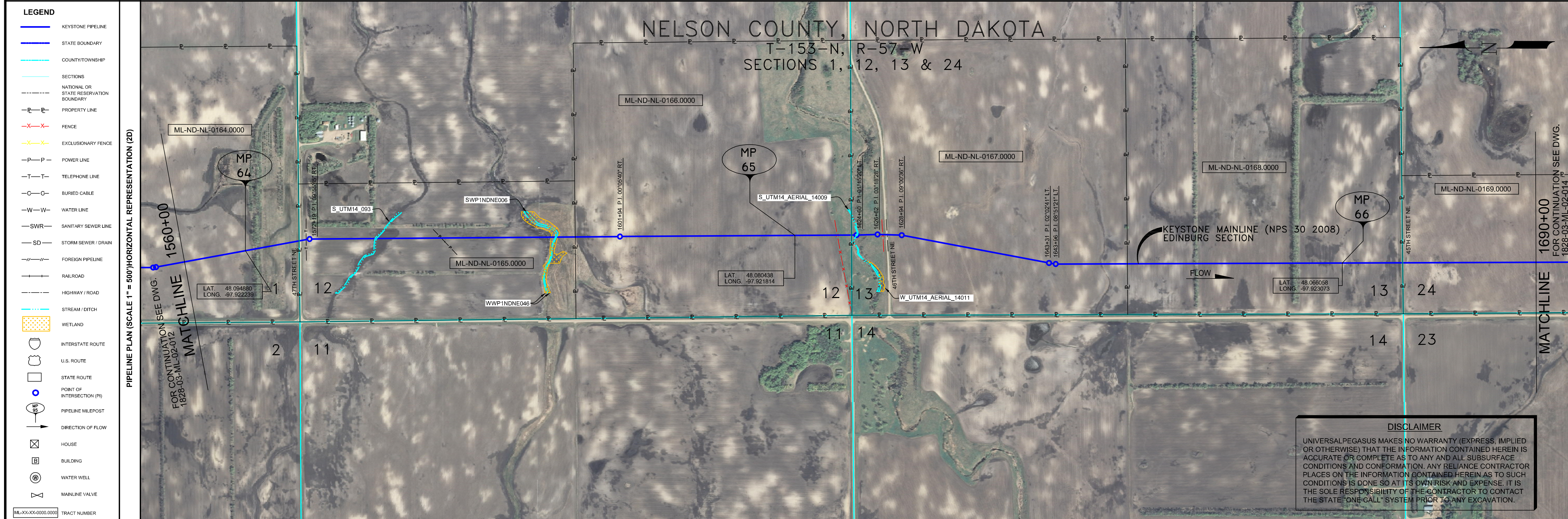
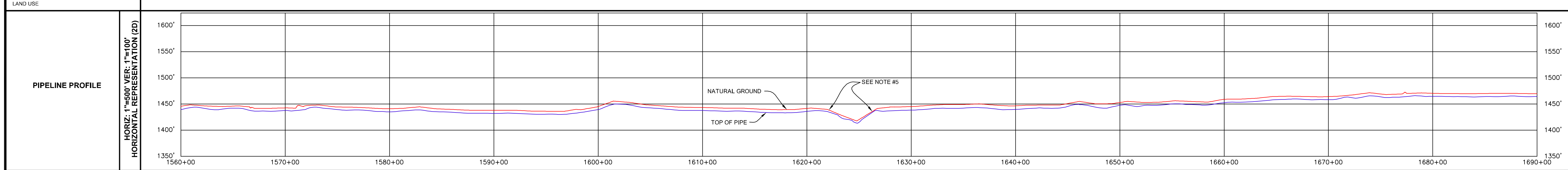


RIGHT-OF-WAY HORIZONTAL REPRESENTATION (2D)											
TRACT NUMBER		ML-ND-NL-0164.0000		ML-ND-NL-0165.0000		ML-ND-NL-0166.0000		ML-ND-NL-0167.0000		ML-ND-NL-0168.0000	
LENGTH APPLICABLE DWG. NO.		1571+28		1571+28		1571+28		1571+28		1571+28	
LAND USE		1571+28		1571+28		1571+28		1571+28		1571+28	



PIPELINE SCHEMATIC	STATION DESCRIPTION	STATIONING
HEAVY WALL PIPE	1567+88 4.4' C.V.R.	1567+88
WELD FITTING	1568+01 M.P. 64	1568+01
TRANSITION PIECE	1568+05 5.0' C.V.R.	1568+05
CASING PIPE	1568+14 5.0' C.V.R.	1568+14
CONCRETE COATING	1568+21 5.0' C.V.R.	1568+21
SET ON WELDS	1568+24 5.0' C.V.R.	1568+24
PIPELINE WARNING SIGN	1568+31 5.0' C.V.R.	1568+31
PIPELINE MARKER	1568+38 5.0' C.V.R.	1568+38
MATERIAL ITEM	1568+45 5.0' C.V.R.	1568+45
GROUNDING MAT	1568+52 5.0' C.V.R.	1568+52
ZINC RIBBON	1568+59 5.0' C.V.R.	1568+59
AERIAL MARKER	1569+06 5.0' C.V.R.	1569+06
CATHODIC TEST STATION	1569+13 5.0' C.V.R.	1569+13
MAINLINE VALVE	1569+20 5.0' C.V.R.	1569+20
CHECK VALVE	1569+27 5.0' C.V.R.	1569+27
OPEN CUT	1569+34 5.0' C.V.R.	1569+34
BORER	1569+41 5.0' C.V.R.	1569+41
DRINKING WATER USA	1569+48 5.0' C.V.R.	1569+48
E	1569+55 5.0' C.V.R.	1569+55
H	1569+62 5.0' C.V.R.	1569+62
K	1569+69 5.0' C.V.R.	1569+69
O	1569+76 5.0' C.V.R.	1569+76
S	1569+83 5.0' C.V.R.	1569+83
W	1569+90 5.0' C.V.R.	1569+90

TEST SECTIONS (3D)	TEST SECTION 1A-3 ILTO-020-2010
TOPSOIL SALVAGE METHOD	
STREAMS	
WETLANDS	
TIMING CONSTRAINTS	
STATIONS	
MONITORING	
RECLAMATION	
SPECIAL CONSIDERATIONS	

- ### GENERAL NOTES
- ALL CHAINAGES ARE IN FEET UNLESS OTHERWISE SPECIFIED.
  - DATUM ELEVATION AND PROJECTION ARE BASED ON MEAN SEA LEVEL AND NAD 83.
  - FIELD PIPE LOCATING REQUIRED TO DETERMINE PLACEMENT OF PIPELINE WITHIN PERMANENT EASEMENT.
  - UNLESS OTHERWISE NOTED, 48 INCHES MINIMUM COVER EXCEPT 36 INCHES IN AREAS OF CONSOLIDATED ROCK.
  - NO ACTUAL AS-BUILT GROUND SHOTS WERE TAKEN AT THIS LOCATION. THE PROFILE REPRESENTS A PROJECTION FROM SHOTS TAKEN AT 150' TO 250' INTERVALS.
  - THE TYPE OF COATING APPLIED TO THE FIELD WELDS DURING THE ORIGINAL CONSTRUCTION WAS TWO COMPONENT LIQUID EPOXY. THE COATING PRODUCTS USED WERE DENS0 7200 OR SFC SP-2888.
  - THE SUBSTANTIAL CONSTRUCTION COMPLETION DATE, BASED ON CALIPER PIG RUN, WAS AUGUST 12, 2009 FOR M.P. 31.03 TO M.P. 66.93 AND AUGUST 16, 2009 FOR M.P. 66.90 TO M.P. 88.54.
  - ORIGINAL IN-SERVICE DATE OF THE KEYSTONE PIPELINE (PHASE 1): JUNE 30, 2010.
  - CPS CALCULATION DATE: MAY 2010
  - ORION STATION SERIES NUMBER: 1182700.
  - TO DETERMINE THE MILE POST AT A GIVEN LOCATION, ADD THE 3D STATION NUMBER FROM THIS SEGMENT TO STATION NUMBER 1810+69 AND DIVIDE BY 5280.

### OPERATING AND TEST PRESSURE

- THE MAXIMUM OPERATING PRESSURE (MOP) IS 1440 PSIG.
- THE MINIMUM TEST PRESSURE WAS 1601 PSIG.

### BILL OF MATERIALS (3D)

ITEM NO.	DESCRIPTION	QUANTITY
2	30" O. D. X 0.388" W. T. API-5LX-70 WFBE COATING	12,777'
3	30" O. D. X 0.516" W. T. API-5LX-70 WFBE COATING & ABRASION RESISTANT OVERCOAT	237'
PIPELINE MARKERS 1 EA		
PIPELINE WARNING SIGNS 12 EA		
CATHODIC TEST STATION 3 EA		
AERIAL MARKER 1 EA		

### REFERENCE DRAWINGS

REF. NO.	DRAWING NO.	REV. NO.	DRAWING TITLE

### REVISIONS

NO.	DATE	REV. BY	CHECKED BY	APPR. BY	DESCRIPTION
1	5/17/08	UEI	RDG	LAG	ISSUED FOR CONSTRUCTION
2	8/17/08	UEI			ISSUED FOR AS-BUILT
					1828-03-ML-02-013
					REPLACES COVERAGE OF IFC DRAWINGS
					1828-03-ML-02-020
					1828-03-ML-02-021
					1828-03-ML-02-022

### ENGINEERING RECORDS

DRAWN BY	INITIAL	DATE	ENY. APPR. BY	INITIAL	DATE
UEI		10/01/04			
CHECKED BY			APPR. BY		
			COMPANY APPROVED		

### PROFESSIONAL ENGINEER

NAME	STATE	LIC#	REV#	DATE
LOYS A. GRAY, III	ND	PE5714		

SCALE: 0 125 250 500 Feet

**TransCanada**  
In business to deliver

KEYSTONE MAINLINE (NPS 30 2008) EDINBURG SECTION

AS-BUILT ALIGNMENT

M.P. 63.89 TO M.P. 66.35  
SHEET 13 OF 18 SHEETS

STA. 1562+56 TO STA. 1692+70 (3D)

DRAWING NO. 1828-03-ML-02-013 REV# 2

**DISCLAIMER**  
UNIVERSAL PEGASUS MAKES NO WARRANTY (EXPRESS, IMPLIED OR OTHERWISE) THAT THE INFORMATION CONTAINED HEREIN IS ACCURATE OR COMPLETE AS TO ANY AND ALL SUBSURFACE CONDITIONS AND CONFORMATION. ANY RELIANCE CONTRACTOR PLACES ON THE INFORMATION CONTAINED HEREIN AS TO SUCH CONDITIONS IS DONE SO AT ITS OWN RISK AND EXPENSE. IT IS THE SOLE RESPONSIBILITY OF THE CONTRACTOR TO CONTACT THE STATE "ONE CALL" SYSTEM PRIOR TO ANY EXCAVATION.

Z:\00\_KEYSTONE\_AS\_BUILT\14-alignment sheets for North Dakota\ND1828\_03-ML-02-013.dwg, 3/9/2011 9:50:41 AM, pdfFactory.p3