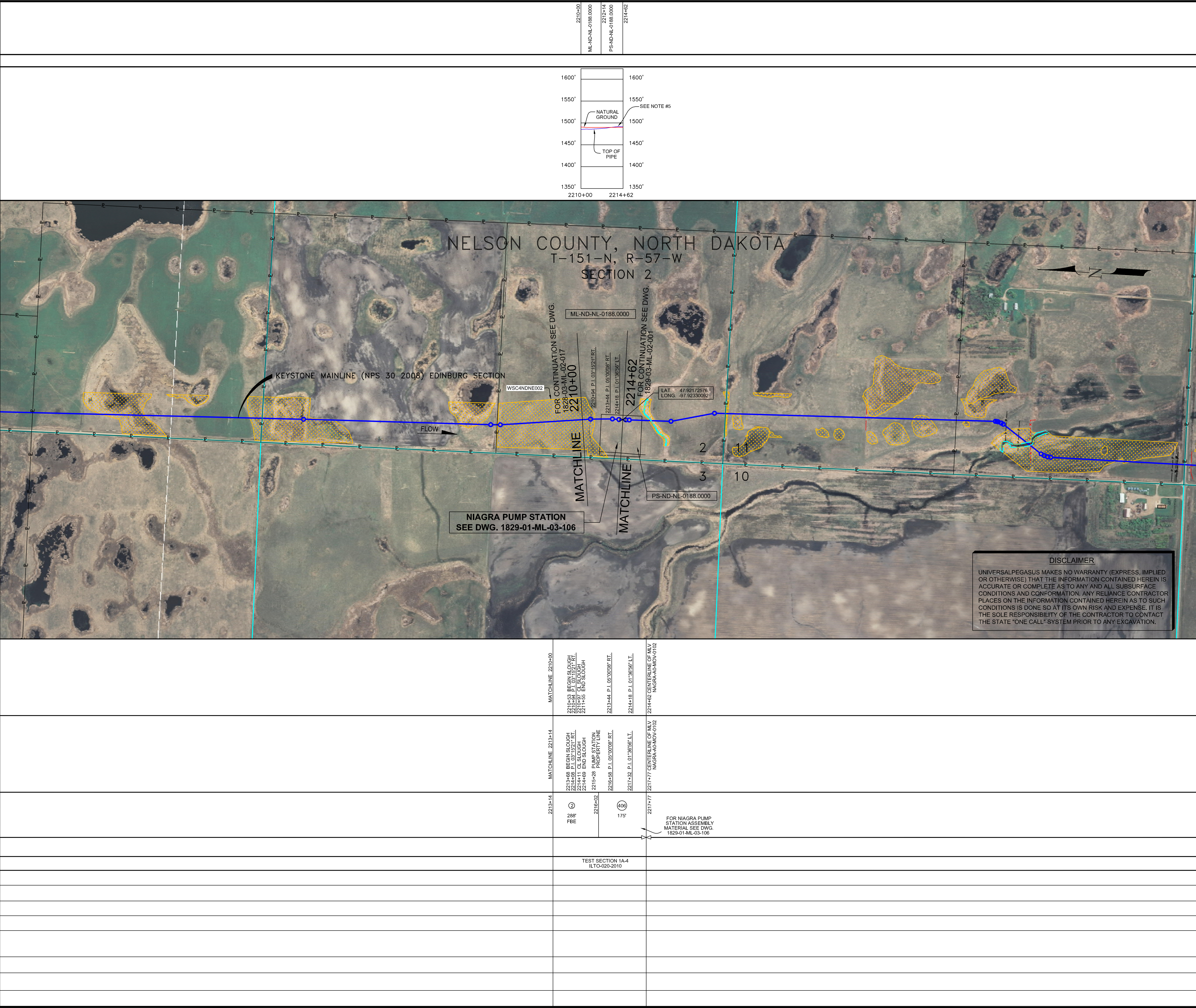


RIGHT-OF-WAY HORIZONTAL REPRESENTATION (2D)	TRACT NUMBER	2210+00	2212+14	2214+62
	LENGTH APPLICABLE DWG. NO.	ML-ND-NL-0188.0000	PS-ND-NL-0188.0000	2214+62
PIPELINE PROFILE	HORIZ: 1"=500' VER: 1"=100'			
	HORIZONTAL REPRESENTATION (2D)			
LEGEND	KEYSTONE PIPELINE			
	STATE BOUNDARY			
PIPELINE PLAN (SCALE 1" = 500')	HORIZONTAL REPRESENTATION (2D)			
	SCALE 1" = 500'			
PIPELINE SCHEMATIC	HORIZONTAL STATIONS (2D)			
	SLOPE STATIONS (3D)			
ENVIRONMENTAL MITIGATION/RECLAMATION STATIONS (2D)	TEST SECTIONS (3D)			
	TOPSOIL SALVAGE METHOD			



- GENERAL NOTES**
- 1) ALL CHAINAGES ARE IN FEET UNLESS OTHERWISE SPECIFIED.
 - 2) DATUM ELEVATION AND PROJECTION ARE BASED ON MEAN SEA LEVEL AND NAD 83.
 - 3) FIELD PIPE LOCATING REQUIRED TO DETERMINE PLACEMENT OF PIPELINE WITHIN PERMANENT EASEMENT.
 - 4) UNLESS OTHERWISE NOTED, 48 INCHES MINIMUM COVER EXCEPT 36 INCHES IN AREAS OF CONSOLIDATED ROCK.
 - 5) NO ACTUAL AS-BUILT GROUND SHOTS WERE TAKEN AT THIS LOCATION. THE PROFILE REPRESENTS A PROJECTION FROM SHOTS TAKEN AT 150' TO 250' INTERVALS.
 - 6) THE TYPE OF COATING APPLIED TO THE FIELD WELDS DURING THE ORIGINAL CONSTRUCTION WAS TWO COMPONENT LIQUID EPOXY. THE COATING PRODUCTS USED WERE DENSOL 7200 OR SPC-SP-2888.
 - 7) THE SUBSTANTIAL CONSTRUCTION COMPLETION DATE, BASED ON CALIPER PIG RUN, WAS AUGUST 12, 2009 FOR M.P. 31.03 TO M.P. 66.93 AND AUGUST 16, 2009 FOR M.P. 66.90 TO M.P. 88.54.
 - 8) ORIGINAL IN-SERVICE DATE OF THE KEYSTONE PIPELINE (PHASE 1): JUNE 30, 2010.
 - 9) CPS CALCULATION DATE: MAY 2010
 - 10) ORION STATION SERIES NUMBER: 1182700.
 - 11) TO DETERMINE THE MILE POST AT A GIVEN LOCATION, ADD THE 3D STATION NUMBER FROM THIS SEGMENT TO STATION NUMBER 1810+69 AND DIVIDE BY 5280.

OPERATING AND TEST PRESSURE

1. THE MAXIMUM OPERATING PRESSURE (MOP) IS 1440 PSIG.
2. THE MINIMUM TEST PRESSURE WAS 1601 PSIG.

BILL OF MATERIALS (3D)

ITEM NO.	DESCRIPTION	QUANTITY
2	30" O.D. X 0.388" W.T. API-5L X 70/FBE COATING	288'
406	NIAGRA PUMP STATION ASSEMBLY (-175)	1 EA
	PIPELINE MARKERS	0 EA
	PIPELINE WARNING SIGNS	0 EA
	CATHODIC TEST STATION	0 EA
	AERIAL MARKER	0 EA

REFERENCE DRAWINGS

REF. NO.	DRAWING NO.	REV. NO.	DRAWING TITLE
406	1829-01-ML-03-106	06	NIAGRA PUMP STATION
	1829-01-ML-03-107	00	NIAGRA PUMP STATION
	1829-01-ML-03-108	00	NIAGRA PUMP STATION

REVISIONS

NO.	DATE	REV. BY	CHECKED BY	APPROVED BY	DESCRIPTION
1	5/17/08	UEI	RDG	LAG	ISSUED FOR CONSTRUCTION
2	8/17/08	UEI			ISSUED FOR AS-BUILT
					REPLACES COVERAGE OF IFC DRAWING 1828-03-ML-02-028

ENGINEERING RECORDS

DRAWN BY	INITIAL	DATE	ENY APPRD.	INITIAL	DATE
UEI		10/01/04			

PROFESSIONAL ENGINEER

NAME	STATE	LIC#	REV#	DATE
LOYS A. GRAY, III	ND	PE5714		

SCALE: 0 125 250 500 Feet



KEYSTONE MAINLINE (NPS 30 2008) EDINBURG SECTION
 F# 1828 SPREAD 1A DISCIPLINE 03

AS-BUILT ALIGNMENT
 M.P. 76.21 TO M.P. 76.30
 SHEET 18 OF 18 SHEETS
 STA. 2213+14 TO STA. 2217+77 (3D)
 DRAWING NO. 1828-03-ML-02-018 REV. 2