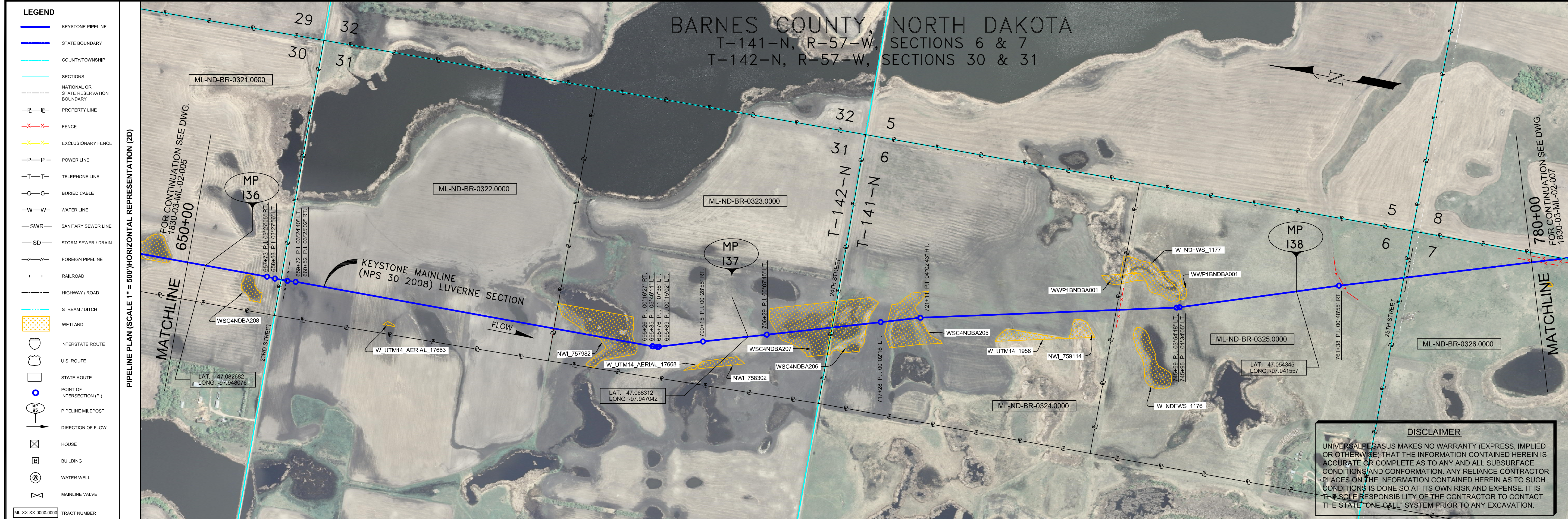


- GENERAL NOTES**
- 1) ALL CHAINAGES ARE IN FEET UNLESS OTHERWISE SPECIFIED.
 - 2) DATUM ELEVATION AND PROJECTION ARE BASED ON MEAN SEA LEVEL AND NAD 83.
 - 3) FIELD PIPE LOCATING REQUIRED TO DETERMINE PLACEMENT OF PIPELINE WITHIN PERMANENT EASEMENT.
 - 4) UNLESS OTHERWISE NOTED, 48 INCHES MINIMUM COVER EXCEPT 36 INCHES IN AREAS OF CONSOLIDATED ROCK.
 - 5) NO ACTUAL AS-BUILT GROUND SHOTS WERE TAKEN AT THIS LOCATION. THE PROFILE REPRESENTS A PROJECTION FROM SHOTS TAKEN AT 150' TO 250' INTERVALS.
 - 6) THE TYPE OF COATING APPLIED TO THE FIELD WELDS DURING THE ORIGINAL CONSTRUCTION WAS TWO COMPONENT LIQUID EPOXY. THE COATING PRODUCTS USED WERE DENSO 7200 OR SPC SP-2888.
 - 7) THE SUBSTANTIAL CONSTRUCTION COMPLETION DATE, BASED ON CALIPER PIG RUN, WAS SEPTEMBER 23, 2009 FOR M.P. 114.00 TO M.P. 130.00, AUGUST 05, 2009 FOR M.P. 129.90 TO M.P. 165.72 AND AUGUST 07, 2009 M.P. 165.73 TO M.P. 165.68.
 - 8) ORIGINAL IN-SERVICE DATE OF THE KEYSTONE PIPELINE (PHASE 1): JUNE 30, 2010.
 - 9) CPS CALCULATION DATE: MAY 2010.
 - 10) ORION STATION SERIES NUMBER: 1182700.
 - 11) TO DETERMINE THE MILE POST AT A GIVEN LOCATION, ADD THE 3D STATION NUMBER FROM THIS SEGMENT TO STATION NUMBER 6528+26 AND DIVIDE BY 5280.



- OPERATING AND TEST PRESSURE**
1. THE MAXIMUM OPERATING PRESSURE (MOP) IS 1440 PSIG.
 2. THE MINIMUM TEST PRESSURE WAS 1601 PSIG.

BILL OF MATERIALS (3D)

ITEM NO.	DESCRIPTION	QUANTITY
1	30" O.D. X 0.438" W.T., API-SLX-70 W/FBE COATING	155'
2	30" O.D. X 0.386" W.T., API-SLX-70 W/FBE COATING	12,612'
3	30" O.D. X 0.516" W.T., API-SLX-70 W/FBE COATING & ABRASION RESISTANT OVERCOAT	241'

REFERENCE DRAWINGS

REF. NO.	DRAWING NO.	REV. NO.	DRAWING TITLE

REVISIONS

NO.	DATE	REV. BY	CHKD. BY	APP'D. BY	DESCRIPTION
1	5/17/08	UEI	RDG	LAG	ISSUED FOR CONSTRUCTION
2	8/17/08	UEI	RDG	LAG	FPL ROAD ADDED
3	9/17/08	UEI	RDG	LAG	ISSUED FOR AS-BUILT

PIPELINE SCHEMATIC

STATION	DESCRIPTION
652+54 M.O. 1.36	HEAVY WALL PIPE
654+24 BEGIN SLOUGH	WELD FITTING
654+24 4.7 CVR	CASING PIPE
654+25 END SLOUGH	CONCRETE COATING
657+25 END SLOUGH	SET ON WELDS
658+35 3.0 CVR	PIPELINE WARNING SIGN
658+35 P.I. 0327255' RT.	PIPELINE MARKER
658+35 P.I. 0327255' LT.	MATERIAL ITEM
658+35 3.0 CVR	GROUNDING MAT
658+35 3.0 CVR	ZINC RIBBON
658+35 3.0 CVR	AERIAL MARKER
658+35 3.0 CVR	CATHODIC TEST STATION
658+35 3.0 CVR	MANLINE VALVE
658+35 3.0 CVR	CHECK VALVE
658+35 3.0 CVR	OPEN CUT
658+35 3.0 CVR	BORE
658+35 3.0 CVR	DRINKING WATER USA
658+35 3.0 CVR	ECOLOGICAL USA
658+35 3.0 CVR	HIGHLY POPULATED AREA
658+35 3.0 CVR	OPERATOR (KEYSTONE) DEFINED
658+35 3.0 CVR	OTHER POPULATED AREA
658+35 3.0 CVR	SOURCE WATER PROTECTION AREA
658+35 3.0 CVR	WELLHEAD PROTECTION AREA

ENGINEERING RECORDS

DRAWN BY	INITIAL	DATE	ENY. APPRD.	INITIAL	DATE
UEI		10/01/18			

PROFESSIONAL ENGINEER

NAME	STATE	LIC#	REV#	DATE
LOYS A. GRAY, III	ND	PE5714		

TEST SECTIONS (3D)

TEST SECTION	STATION	DESCRIPTION
TEST SECTION 2A-1	650+80	ILTO-022-2010

SCALE: 0 125 250 500 Feet

AS-BUILT ALIGNMENT

M.P. 135.97 TO M.P. 138.43

SHEET 6 OF 20 SHEETS

STA. 650+80 TO STA. 780+88 (3D)

DRAWING NO. 1830-03-ML-02-006 REV. 3

Z:\00_KEYSTONE_AS_BUILT\T141-alignment sheets for North Dakota\ND1830-03-ML-02-006.dwg, 3/9/2011 2:26:29 PM, pdfFactory.pd