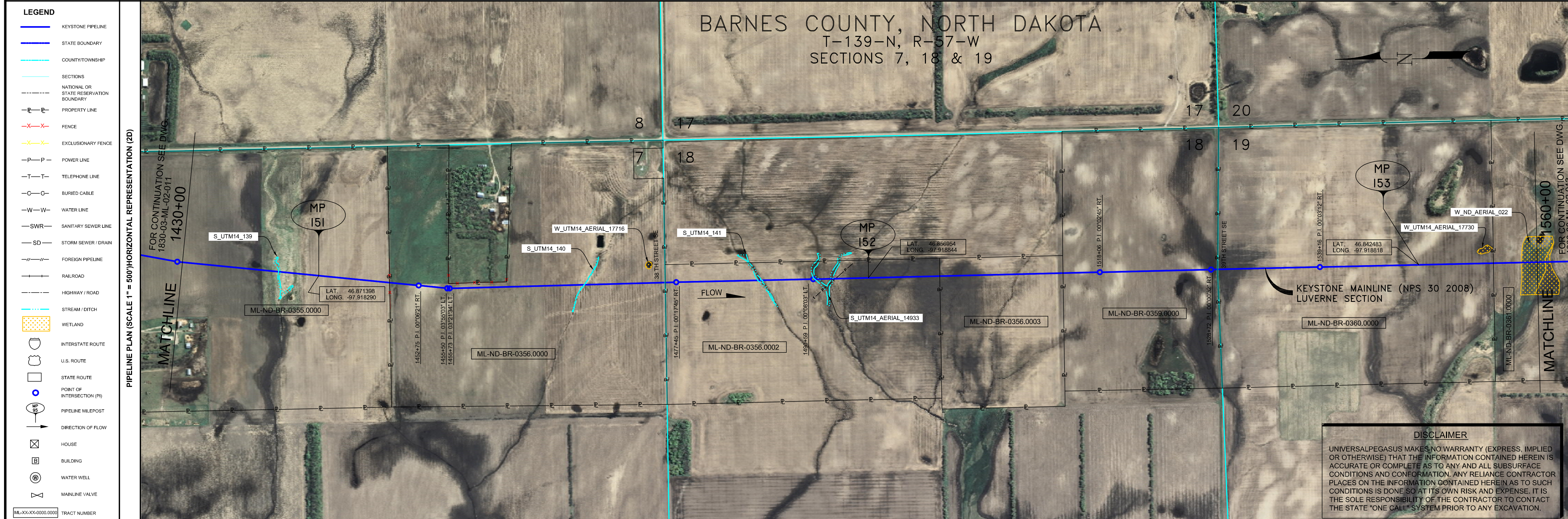


- GENERAL NOTES**
- 1) ALL CHAINAGES ARE IN FEET UNLESS OTHERWISE SPECIFIED.
  - 2) DATUM ELEVATION AND PROJECTION ARE BASED ON MEAN SEA LEVEL AND NAD 83.
  - 3) FIELD PIPE LOCATING REQUIRED TO DETERMINE PLACEMENT OF PIPELINE WITHIN PERMANENT EASEMENT.
  - 4) UNLESS OTHERWISE NOTED, 48 INCHES MINIMUM COVER EXCEPT 36 INCHES IN AREAS OF CONSOLIDATED ROCK.
  - 5) NO ACTUAL AS-BUILT GROUND SHOTS WERE TAKEN AT THIS LOCATION. THE PROFILE REPRESENTS A PROJECTION FROM SHOTS TAKEN AT 150' TO 250' INTERVALS.
  - 6) THE TYPE OF COATING APPLIED TO THE FIELD WELDS DURING THE ORIGINAL CONSTRUCTION WAS TWO COMPONENT LIQUID EPOXY. THE COATING PRODUCTS USED WERE DENSO 7200 OR SFC SP-2888.
  - 7) THE SUBSTANTIAL CONSTRUCTION COMPLETION DATE, BASED ON CALPER PIG RUN, WAS SEPTEMBER 23, 2009 FOR M.P. 114.00 TO M.P. 130.00, AUGUST 05, 2009 FOR M.P. 129.90 TO M.P. 168.72 AND AUGUST 07, 2009 M.P. 168.73 TO M.P. 195.68.
  - 8) ORIGINAL IN-SERVICE DATE OF THE KEYSTONE PIPELINE (PHASE 1): JUNE 30, 2010.
  - 9) CPS CALCULATION DATE: MAY 2010.
  - 10) ORION STATION SERIES NUMBER: 1182700.
  - 11) TO DETERMINE THE MILE POST AT A GIVEN LOCATION, ADD THE 3D STATION NUMBER FROM THIS SEGMENT TO STATION NUMBER 6528+26 AND DIVIDE BY 5280.



**OPERATING AND TEST PRESSURE**

1. THE MAXIMUM OPERATING PRESSURE (MOP) IS 1440 PSIG.
2. THE MINIMUM TEST PRESSURE WAS 1601 PSIG.

**BILL OF MATERIALS (3D)**

ITEM NO.	DESCRIPTION	QUANTITY
2	30" O.D. X 0.386" W.T. API-SLX-70 W/FBE COATING	12,851'
3	30" O.D. X 0.516" W.T. API-SLX-70 W/FBE COATING & ABRASION RESISTANT OVERCOAT	1607'

**REFERENCE DRAWINGS**

REF. NO.	DRAWING NO.	REV. NO.	DRAWING TITLE

**REVISIONS**

NO.	DATE	REV. BY	CHKD. BY	APPRD. BY	DESCRIPTION
1	5/7/09	UEI	RDG	LAG	ISSUED FOR CONSTRUCTION
2	9/17/09	UEI			ISSUED FOR AS-BUILT
					1830-03-ML-02-012
					REPLACES COVERAGE OF IFC DRAWINGS
					1830-03-ML-02-018
					1830-03-ML-02-019
					1830-03-ML-02-020

**ENGINEERING RECORDS**

DRAWN BY	INITIAL	DATE	ENY. APPRD.	INITIAL	DATE
UEI		10/01/18			

**PROFESSIONAL ENGINEER**

NAME	STATE	LIC#	REV#	DATE
LOYS A. GRAY, III	ND	PE5714		

**SCALE:** 0 125 250 500 Feet

**TransCanada**  
In business to deliver

KEYSTONE MAINLINE (NPS 30 2008) LUVIERNE SECTION

PLAN 1830 1830-03-ML-02-012

**AS-BUILT ALIGNMENT**

M.P. 150.75 TO M.P. 153.21

SHEET 12 OF 20 SHEETS

STA. 1431+38 TO STA. 1561+49 (3D)

DRAWING NO. 1830-03-ML-02-012

**PIPELINE SCHEMATIC**

STATIONING	DESCRIPTION
1430+00	MATCHLINE
1438+50	TOP BANK
1439+26	CL DITCH
1441+28	TOP BANK
1444+54	M.P. 151
1451+36	FENCE (BARBED WIRE)
1454+15	P.I. 0.007821' RT.
1455+50	P.I. 0.035503' LT.
1457+13	P.I. 0.032134' LT.
1458+50	TOP BANK
1458+59	CL DITCH
1460+01	TOP BANK
1477+42	EDGE OF ROAD, SE
1477+44	EDGE OF ROAD, SE
1478+22	P.I. 0.001745' RT.
1481+58	5.3' C.V.R.
1488+56	TOP BANK
1488+58	CL DITCH
1488+59	TOP BANK
1488+63	TOP BANK
1488+64	CL DITCH
1488+65	TOP BANK
1488+66	CL DITCH
1488+67	TOP BANK
1488+68	CL DITCH
1488+69	TOP BANK
1488+70	CL DITCH
1488+71	TOP BANK
1488+72	CL DITCH
1488+73	TOP BANK
1488+74	CL DITCH
1488+75	TOP BANK
1488+76	CL DITCH
1488+77	TOP BANK
1488+78	CL DITCH
1488+79	TOP BANK
1488+80	CL DITCH
1488+81	TOP BANK
1488+82	CL DITCH
1488+83	TOP BANK
1488+84	CL DITCH
1488+85	TOP BANK
1488+86	CL DITCH
1488+87	TOP BANK
1488+88	CL DITCH
1488+89	TOP BANK
1488+90	CL DITCH
1488+91	TOP BANK
1488+92	CL DITCH
1488+93	TOP BANK
1488+94	CL DITCH
1488+95	TOP BANK
1488+96	CL DITCH
1488+97	TOP BANK
1488+98	CL DITCH
1488+99	TOP BANK
1489+00	CL DITCH
1489+01	TOP BANK
1489+02	CL DITCH
1489+03	TOP BANK
1489+04	CL DITCH
1489+05	TOP BANK
1489+06	CL DITCH
1489+07	TOP BANK
1489+08	CL DITCH
1489+09	TOP BANK
1489+10	CL DITCH
1489+11	TOP BANK
1489+12	CL DITCH
1489+13	TOP BANK
1489+14	CL DITCH
1489+15	TOP BANK
1489+16	CL DITCH
1489+17	TOP BANK
1489+18	CL DITCH
1489+19	TOP BANK
1489+20	CL DITCH
1489+21	TOP BANK
1489+22	CL DITCH
1489+23	TOP BANK
1489+24	CL DITCH
1489+25	TOP BANK
1489+26	CL DITCH
1489+27	TOP BANK
1489+28	CL DITCH
1489+29	TOP BANK
1489+30	CL DITCH
1489+31	TOP BANK
1489+32	CL DITCH
1489+33	TOP BANK
1489+34	CL DITCH
1489+35	TOP BANK
1489+36	CL DITCH
1489+37	TOP BANK
1489+38	CL DITCH
1489+39	TOP BANK
1489+40	CL DITCH
1489+41	TOP BANK
1489+42	CL DITCH
1489+43	TOP BANK
1489+44	CL DITCH
1489+45	TOP BANK
1489+46	CL DITCH
1489+47	TOP BANK
1489+48	CL DITCH
1489+49	TOP BANK
1489+50	CL DITCH
1489+51	TOP BANK
1489+52	CL DITCH
1489+53	TOP BANK
1489+54	CL DITCH
1489+55	TOP BANK
1489+56	CL DITCH
1489+57	TOP BANK
1489+58	CL DITCH
1489+59	TOP BANK
1489+60	CL DITCH
1489+61	TOP BANK
1489+62	CL DITCH
1489+63	TOP BANK
1489+64	CL DITCH
1489+65	TOP BANK
1489+66	CL DITCH
1489+67	TOP BANK
1489+68	CL DITCH
1489+69	TOP BANK
1489+70	CL DITCH
1489+71	TOP BANK
1489+72	CL DITCH
1489+73	TOP BANK
1489+74	CL DITCH
1489+75	TOP BANK
1489+76	CL DITCH
1489+77	TOP BANK
1489+78	CL DITCH
1489+79	TOP BANK
1489+80	CL DITCH
1489+81	TOP BANK
1489+82	CL DITCH
1489+83	TOP BANK
1489+84	CL DITCH
1489+85	TOP BANK
1489+86	CL DITCH
1489+87	TOP BANK
1489+88	CL DITCH
1489+89	TOP BANK
1489+90	CL DITCH
1489+91	TOP BANK
1489+92	CL DITCH
1489+93	TOP BANK
1489+94	CL DITCH
1489+95	TOP BANK
1489+96	CL DITCH
1489+97	TOP BANK
1489+98	CL DITCH
1489+99	TOP BANK
1490+00	CL DITCH
1490+01	TOP BANK
1490+02	CL DITCH
1490+03	TOP BANK
1490+04	CL DITCH
1490+05	TOP BANK
1490+06	CL DITCH
1490+07	TOP BANK
1490+08	CL DITCH
1490+09	TOP BANK
1490+10	CL DITCH
1490+11	TOP BANK
1490+12	CL DITCH
1490+13	TOP BANK
1490+14	CL DITCH
1490+15	TOP BANK
1490+16	CL DITCH
1490+17	TOP BANK
1490+18	CL DITCH
1490+19	TOP BANK
1490+20	CL DITCH
1490+21	TOP BANK
1490+22	CL DITCH
1490+23	TOP BANK
1490+24	CL DITCH
1490+25	TOP BANK
1490+26	CL DITCH
1490+27	TOP BANK
1490+28	CL DITCH
1490+29	TOP BANK
1490+30	CL DITCH
1490+31	TOP BANK
1490+32	CL DITCH
1490+33	TOP BANK
1490+34	CL DITCH
1490+35	TOP BANK
1490+36	CL DITCH
1490+37	TOP BANK
1490+38	CL DITCH
1490+39	TOP BANK
1490+40	CL DITCH
1490+41	TOP BANK
1490+42	CL DITCH
1490+43	TOP BANK
1490+44	CL DITCH
1490+45	TOP BANK
1490+46	CL DITCH
1490+47	TOP BANK
1490+48	CL DITCH
1490+49	TOP BANK
1490+50	CL DITCH
1490+51	TOP BANK
1490+52	CL DITCH
1490+53	TOP BANK
1490+54	CL DITCH
1490+55	TOP BANK
1490+56	CL DITCH
1490+57	TOP BANK
1490+58	CL DITCH
1490+59	TOP BANK
1490+60	CL DITCH
1490+61	TOP BANK
1490+62	CL DITCH
1490+63	TOP BANK
1490+64	CL DITCH
1490+65	TOP BANK
1490+66	CL DITCH
1490+67	TOP BANK
1490+68	CL DITCH
1490+69	TOP BANK
1490+70	CL DITCH
1490+71	TOP BANK
1490+72	CL DITCH
1490+73	TOP BANK
1490+74	CL DITCH
1490+75	TOP BANK
1490+76	CL DITCH
1490+77	TOP BANK
1490+78	CL DITCH
1490+79	TOP BANK
1490+80	CL DITCH
1490+81	TOP BANK
1490+82	CL DITCH
1490+83	TOP BANK
1490+84	CL DITCH
1490+85	TOP BANK
1490+86	CL DITCH
1490+87	TOP BANK
1490+88	CL DITCH
1490+89	TOP BANK
1490+90	CL DITCH
1490+91	TOP BANK
1490+92	CL DITCH
1490+93	TOP BANK
1490+94	CL DITCH
1490+95	TOP BANK
1490+96	CL DITCH
1490+97	TOP BANK
1490+98	CL DITCH
1490+99	TOP BANK
1491+00	CL DITCH
1491+01	TOP BANK
1491+02	CL DITCH
1491+03	TOP BANK
1491+04	CL DITCH
1491+05	TOP BANK
1491+06	CL DITCH
1491+07	TOP BANK
1491+08	CL DITCH
1491+09	TOP BANK
1491+10	CL DITCH
1491+11	TOP BANK
1491+12	CL DITCH
1491+13	TOP BANK
1491+14	CL DITCH
1491+15	TOP BANK
1491+16	CL DITCH
1491+17	TOP BANK
1491+18	CL DITCH
1491+19	TOP BANK
1491+20	CL DITCH
1491+21	TOP BANK
1491+22	CL DITCH
1491+23	TOP BANK
1491+24	CL DITCH
1491+25	TOP BANK
1491+26	CL DITCH
1491+27	TOP BANK
1491+28	CL DITCH
1491+29	TOP BANK
1491+30	CL DITCH
1491+31	TOP BANK
1491+32	CL DITCH
1491+33	TOP BANK
1491+34	CL DITCH
1491+35	TOP BANK
1491+36	CL DITCH
1491+37	TOP BANK
1491+38	CL DITCH
1491+39	TOP BANK
1491+40	CL DITCH
1491+41	TOP BANK
1491+42	CL DITCH
1491+43	TOP BANK
1491+44	CL DITCH
1491+45	TOP BANK
1491+46	CL DITCH
1491+47	TOP BANK
1491+48	CL DITCH
1491+49	TOP BANK
1491+50	CL DITCH
1491+51	TOP BANK
1491+52	CL DITCH
1491+53	TOP BANK
1491+54	CL DITCH
1491+55	TOP BANK
1491+56	CL DITCH
1491+57	TOP BANK
1491+58	CL DITCH
1491+59	TOP BANK
1491+60	CL DITCH
1491+61	TOP BANK
1491+62	CL DITCH
1491+63	TOP BANK
1491+64	CL DITCH
1491+65	TOP BANK
1491+66	CL DITCH
1491+67	TOP BANK
1491+68	CL DITCH
1491+69	TOP BANK
1491+70	CL DITCH
1491+71	TOP BANK
1491+72	CL DITCH
1491+73	TOP BANK
1491+74	CL DITCH
1491+75	TOP BANK
1491+76	CL DITCH
1491+77	TOP BANK
1491+78	CL DITCH
1491+79	TOP BANK
1491+80	CL DITCH
1491+81	TOP BANK