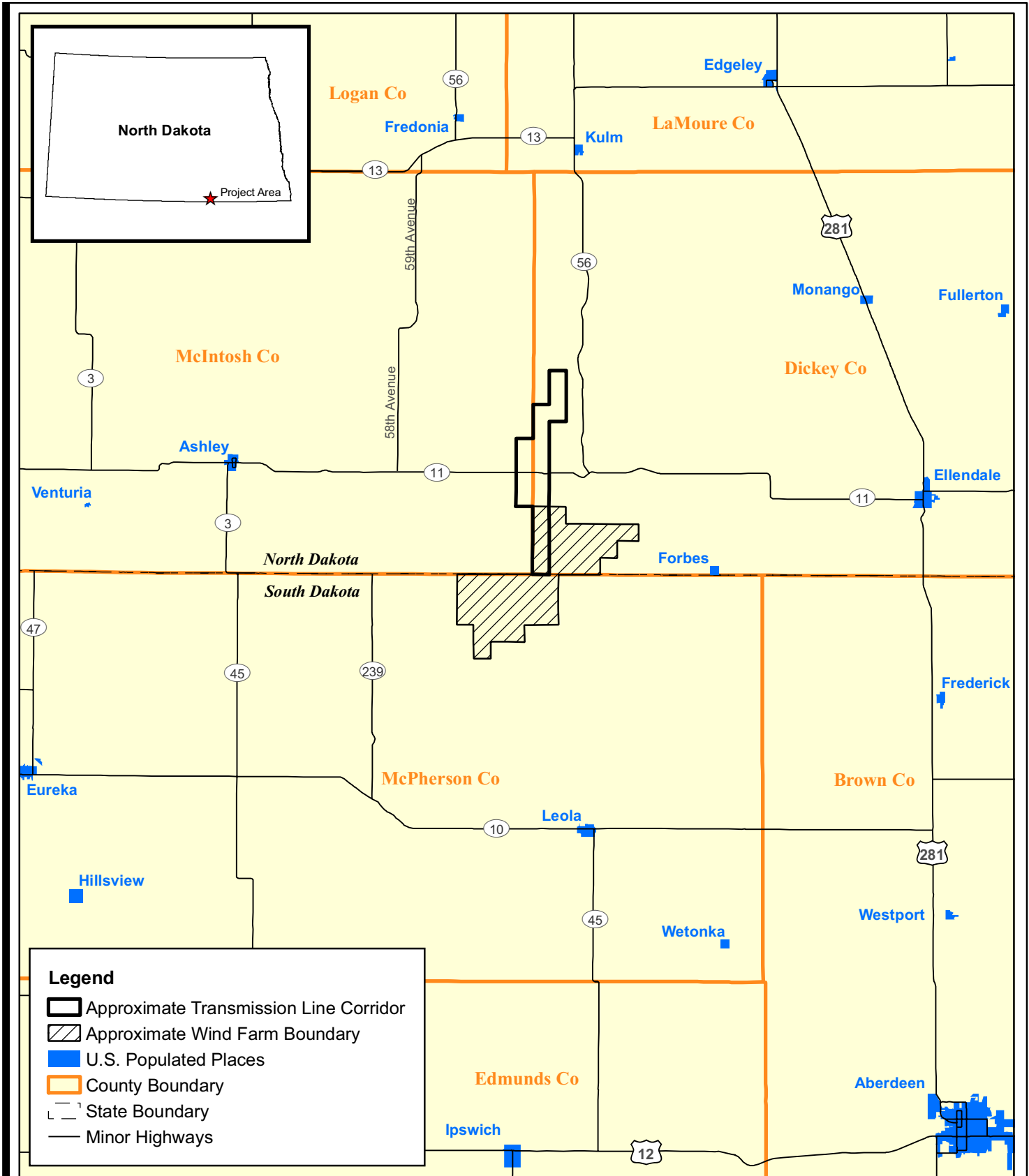


EXHIBITS



Data Source(s): TANA/GDT ESRI (2005), WPS (2006).

Tatanka Transmission Line

Dickey and McIntosh Counties, North Dakota

General Site Location

EXHIBIT 1

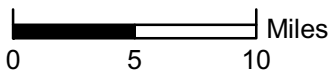


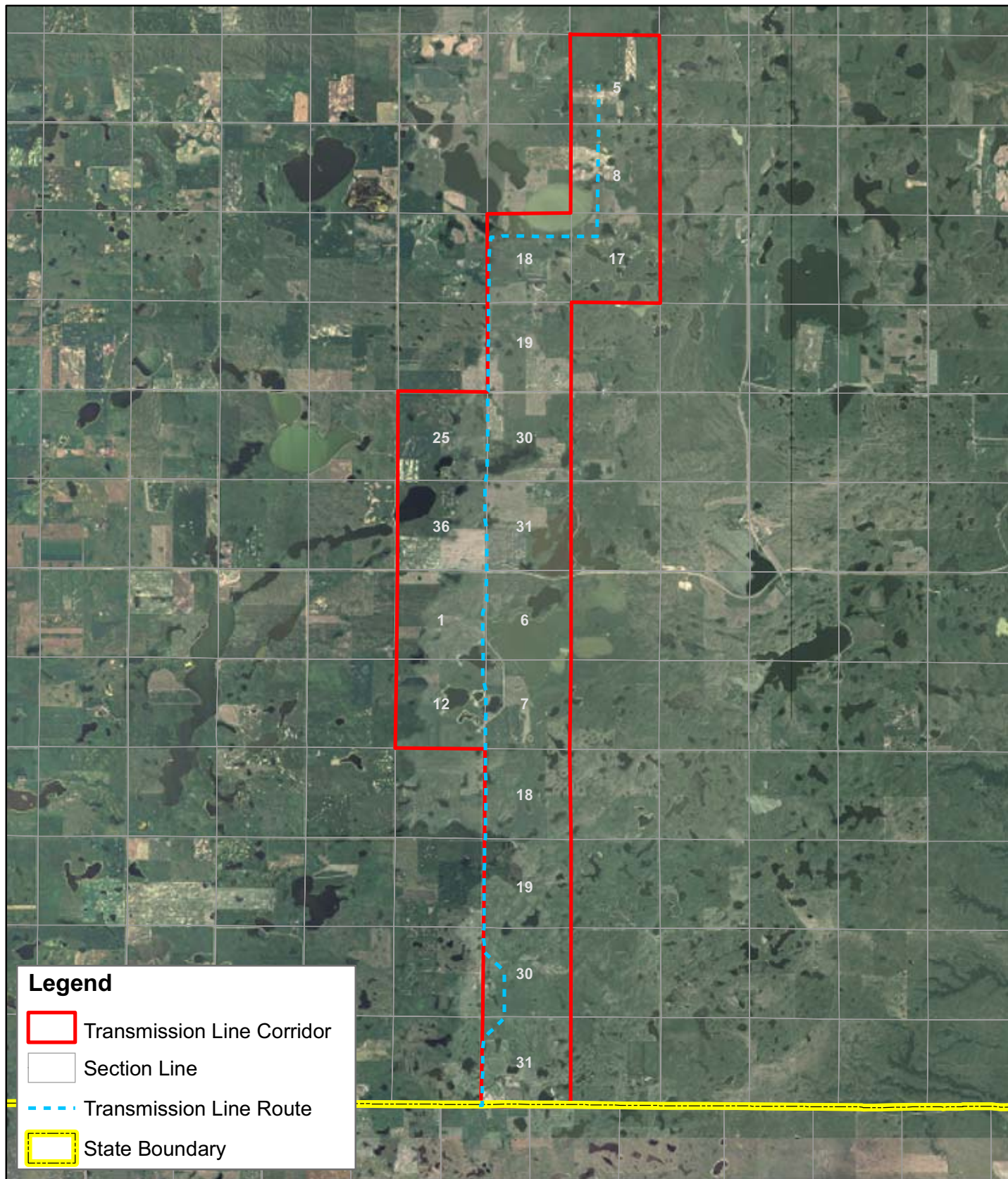
Westwood

Westwood Professional Services, Inc.
7699 Anagram Drive
Eden Prairie, MN 55344




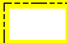
PHONE 952-937-5150
FAX 952-937-5822
TOLL FREE 1-888-937-5150

www.westwoodps.com





Legend

-  Transmission Line Corridor
-  Section Line
-  Transmission Line Route
-  State Boundary

Data Source(s): USDA-FSA Aerials (2005), HDR (2006), WPS (2006).

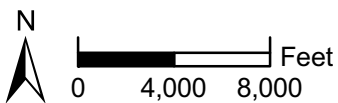
Tatanka Transmission Line

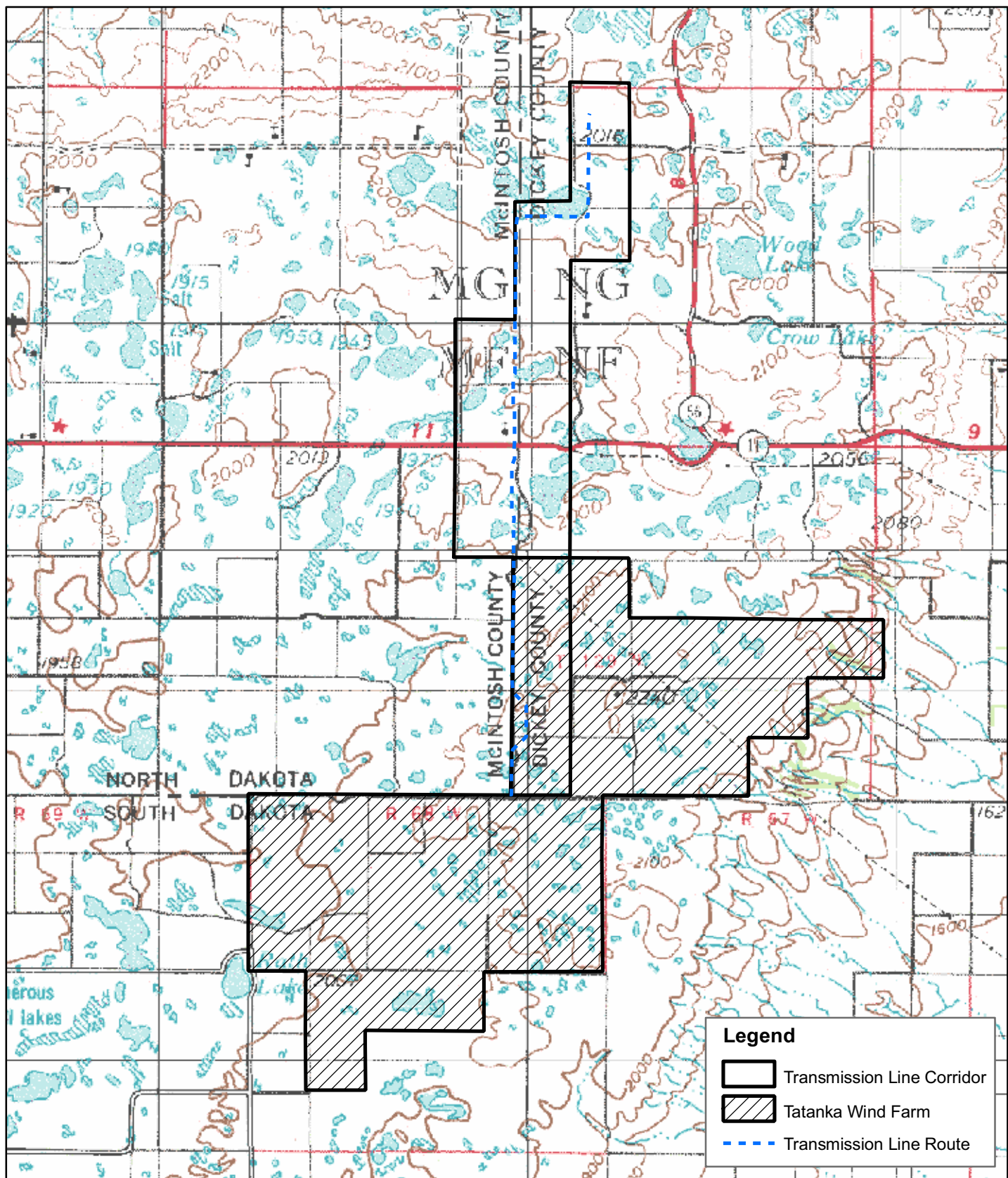
Dickey and McIntosh Counties, ND

Transmission Line Corridor and Proposed Route

EXHIBIT 2


Westwood
 Westwood Professional Services, Inc.
 7699 Anagram Drive
 Eden Prairie, MN 55344
 PHONE 952-937-5150
 FAX 952-937-5822
 TOLL FREE 1-888-937-5150
 www.westwoodps.com





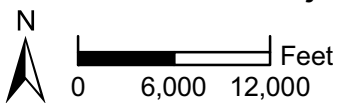
Data Source(s): USGS 250K DRG (SD Aberdeen 1996, ND Jamestown 1996), Acciona (2006), HDR (2006), WPS (2006).

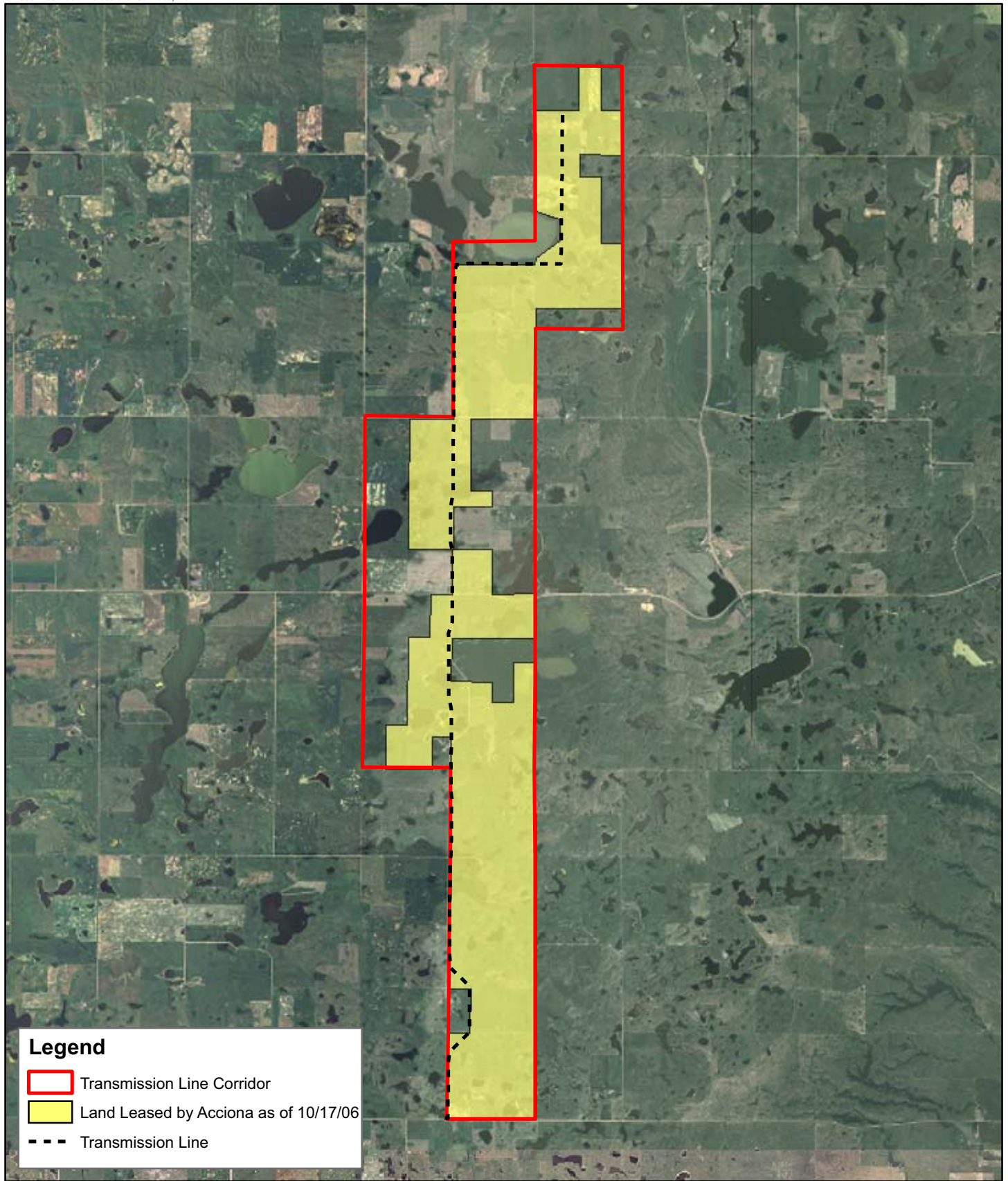
Tatanka Transmission Line

Dickey and McIntosh Counties, ND

Project Boundary and USGS Topography

Westwood
 Westwood Professional Services, Inc.
 7699 Anagram Drive
 Eden Prairie, MN 55344
 PHONE 952-937-5150
 FAX 952-937-5822
 TOLL FREE 1-888-937-5150
 www.westwoodps.com





Legend

- Transmission Line Corridor
- Land Leased by Acciona as of 10/17/06
- Transmission Line

Data Source(s): Acciona (2006), HDR (2006), WPS (2006), USDA-FSA Aerial (2005).

Tatanka Transmission Line

Dickey and McIntosh Counties, ND

Acciona Leased Lands

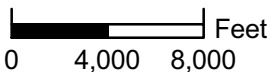
EXHIBIT 4

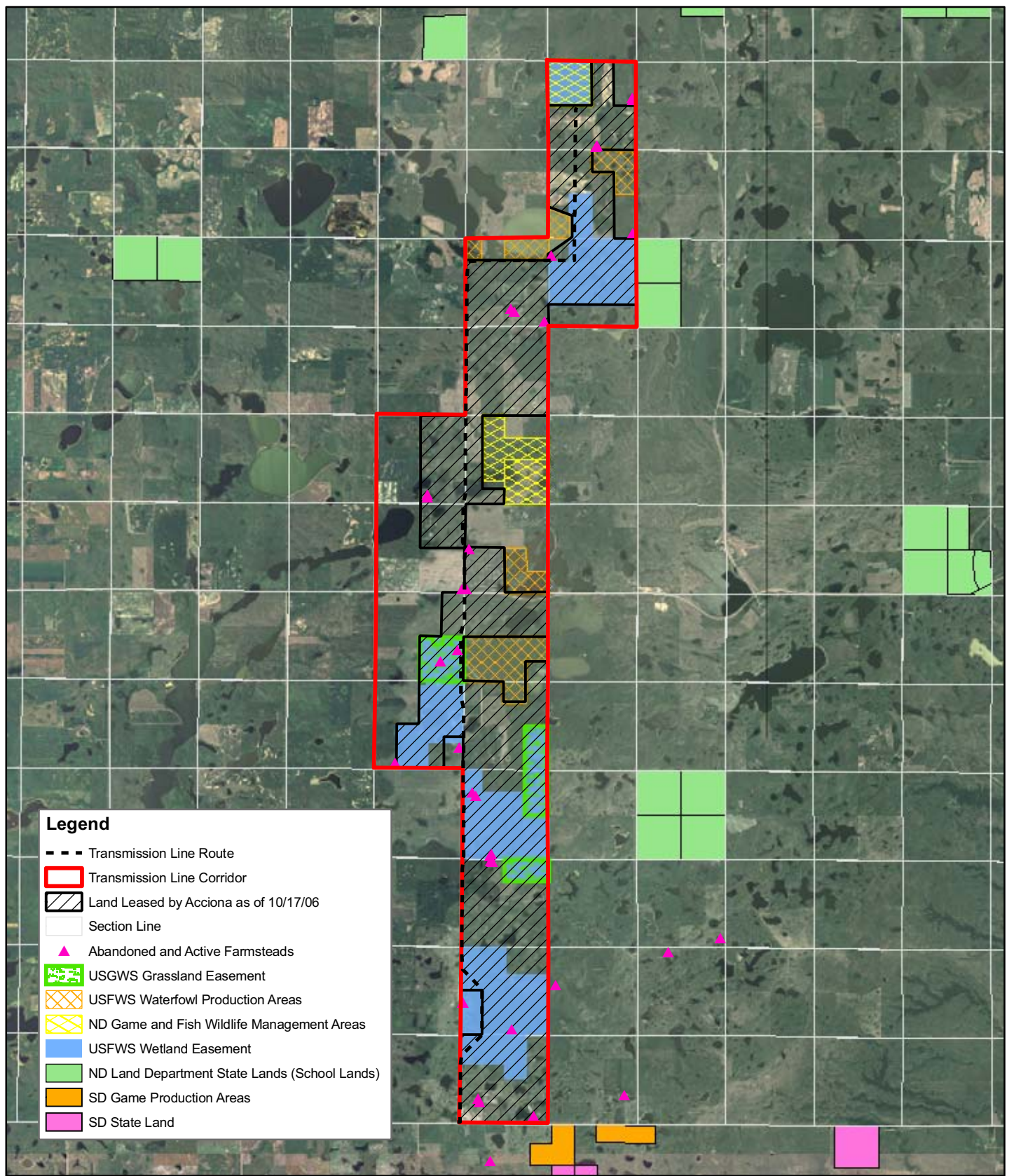


Westwood Professional Services, Inc.
7699 Anagram Drive
Eden Prairie, MN 55344

PHONE 952-937-5150
FAX 952-937-5822
TOLL FREE 1-888-937-5150

www.westwoodps.com





Legend

- - - Transmission Line Route
- Transmission Line Corridor
- Land Leased by Acciona as of 10/17/06
- Section Line
- Abandoned and Active Farmsteads
- USGWS Grassland Easement
- USFWS Waterfowl Production Areas
- ND Game and Fish Wildlife Management Areas
- USFWS Wetland Easement
- ND Land Department State Lands (School Lands)
- SD Game Production Areas
- SD State Land

Data Source(s): ND Game and Fish (2003), USFWS WPA (2003), USFWS Grasslands, ND Land Dept. (2003), HDR (2006), WPS (2006), SD Game, Fish and Parks (2005).

Tatanka Transmission Line

Dickey and McIntosh Counties, ND

Exclusion and Avoidance Areas

EXHIBIT 5

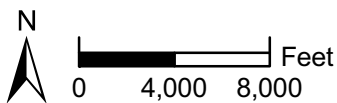
Map Document: P:\2006\2568\gis\p\SC\2006\2568\trans02A_E\5.mxd
11/1/2006 - 2:40:04 PM

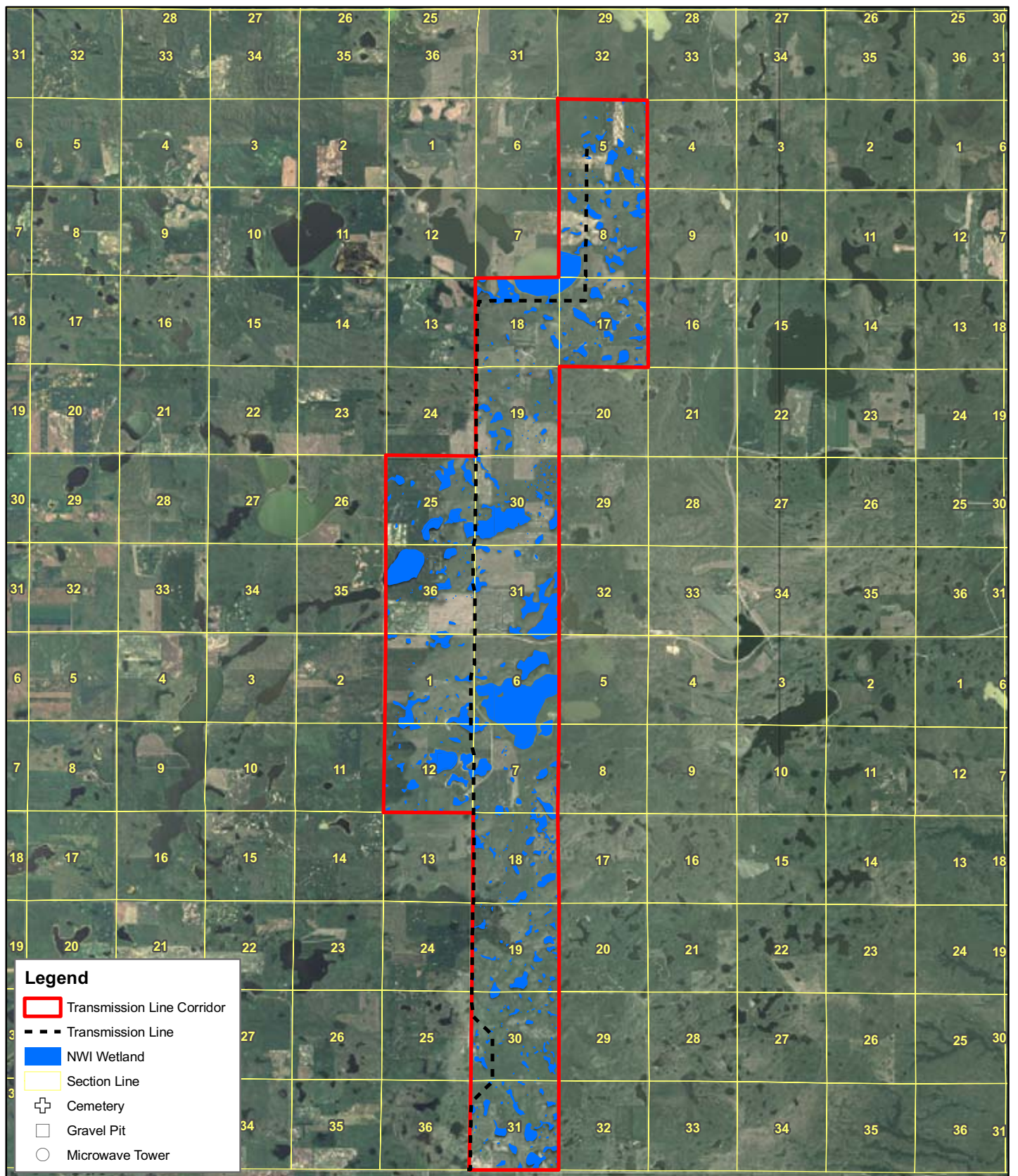


Westwood Professional Services, Inc.
7699 Anagram Drive
Eden Prairie, MN 55344

PHONE 952-937-5150
FAX 952-937-5822
TOLL FREE 1-888-937-5150

www.westwoodps.com





Data Source(s): USFWS NWI (2003), ND Geologic Survey Section Lines (2004), WPS (2006), HDR (2006).

Tatanka Transmission Line

Dickey and McIntosh Counties, ND

Selection Criteria

EXHIBIT 6

Map Document: (P:\2006\2568\gis\p\2006\2568\trans01A_Ext6.mxd) 10/24/2006 - 1:26:26 PM



Westwood Professional Services, Inc.
7699 Anagram Drive
Eden Prairie, MN 55344

PHONE 952-937-5150
FAX 952-937-5822
TOLL FREE 1-888-937-5150

www.westwoodps.com

