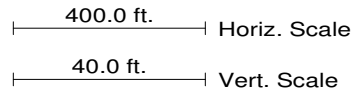


34 th-231-90-h1.pol sta=210+94 X=2348583.35 Y=122134.60 P.I. 11	35 th-231-95-h1.#35.pol sta=220+27 X=2348519.83 Y=123065.58 P.I. 12 Attach Both Guys to Inside Pole	36 th-230-80-2.pol sta=225+64 X=2348514.22 Y=123602.02	37 th-235d-60-h1(sp2) sta=229+00 X=2348510.71 Y=123998.73	38 th-235d-60-h1(spec) sta=230+83 X=2348508.81 Y=124121.06	39 th-230-75-2.pol sta=234+22 X=2348562.26 Y=124455.35	40 th-232a-85-1.pol sta=237+98 X=2348623.68 Y=124826.85	41 th-230-80-2.pol sta=243+29 X=2348618.53 Y=125358.03	42 th-231-90-h1.pol sta=249+00 X=2348612.99 Y=125928.55 P.I. 11	43 th-230-95-1.pol sta=259+79 X=2348526.98 Y=127004.07
---	--	---	--	---	---	--	---	---	---

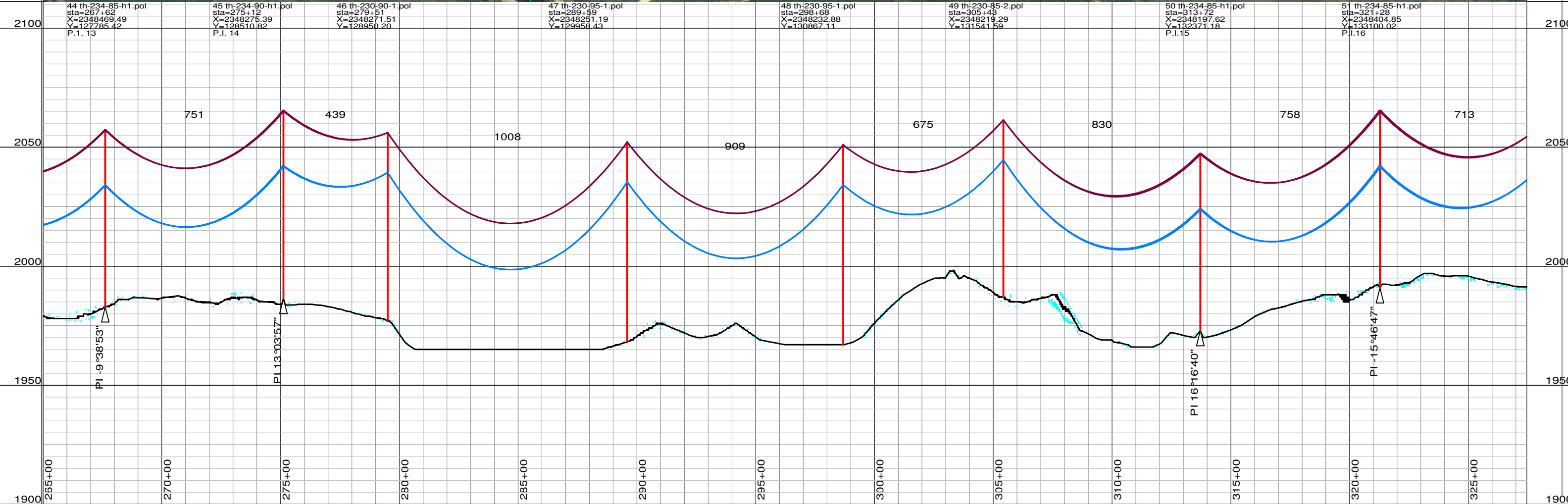
Special 16' Pole spacing.  
Install 1-41' X-ARM for  
jumper support. Install 17' double arm  
Assembly @ 23.5' above ground  
for OPGW. Dead End OPGW on East Pole top  
and @ center of bottom arm.  
Run OPGW down pole and out on arm 77  
to Dead End position.



PROJECT TITLE **Tatanka Wind Farm**

SHEET TITLE **230 kV Transmission Line**

PROJECT NUMBER 47269	REFERENCE SHEET
PROJECT MANAGER Bill Barnhart	REFERENCE DOCUMENT
DATE 2-09-2007	EXHIBIT NUMBER 5 of 13



400.0 ft. Horiz. Scale  
 40.0 ft. Vert. Scale



PROJECT TITLE **Tatanka Wind Farm**  
 SHEET TITLE **230 kV Transmission Line**

PROJECT NUMBER **47269**  
 PROJECT MANAGER **Bill Barnhart**  
 DATE **2-09-2007**

REFERENCE SHEET  
 REFERENCE DOCUMENT  
 EXHIBIT NUMBER **6 of 13**

44 th-234-85-h1.pol sta=267+62 X=2348469.49 Y=127785.42 P.I. 13	45 th-234-90-h1.pol sta=275+12 X=2348275.39 Y=128510.82 P.I. 14	46 th-230-90-1.pol sta=279+51 X=2348271.51 Y=128950.20	47 th-230-95-1.pol sta=289+59 X=2348251.19 Y=129958.43	48 th-230-95-1.pol sta=298+69 X=2348232.88 Y=130867.11	49 th-230-85-2.pol sta=305+49 X=2348219.29 Y=131541.59	50 th-234-85-h1.pol sta=313+72 X=2348197.62 Y=132371.18 P.I. 15	51 th-234-85-h1.pol sta=321+28 X=2348404.85 Y=133100.02 P.I. 16
---	---	---	---	---	---	---	---