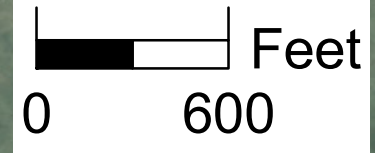
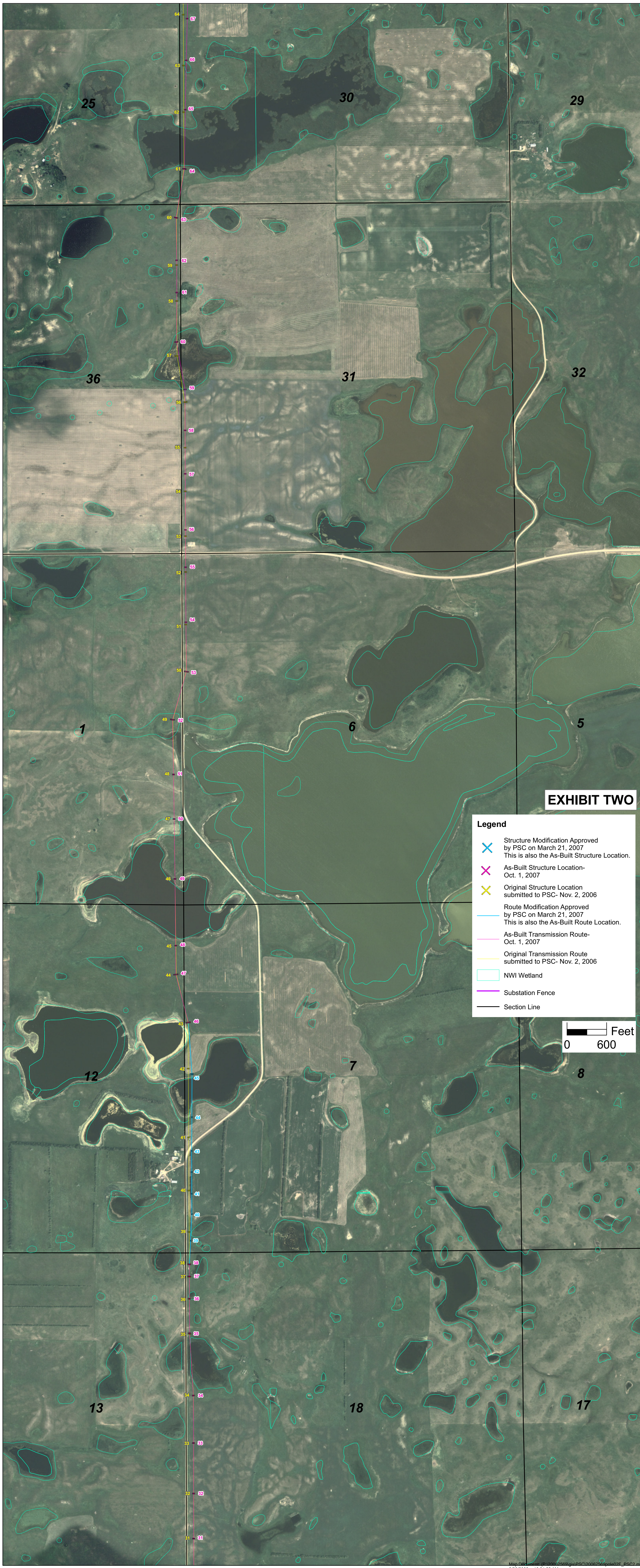


**EXHIBIT ONE**

**Legend**










- ✕ As-Built Structure Location- Oct. 1, 2007
- ✕ Original Structure Location submitted to PSC-Nov. 2, 2006
- As-Built Transmission Route- Oct. 1, 2007
- Original Transmission Route submitted to PSC- Nov. 2, 2006
- NWI Wetland
- Substation Fence
- Section Line

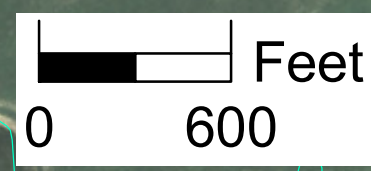


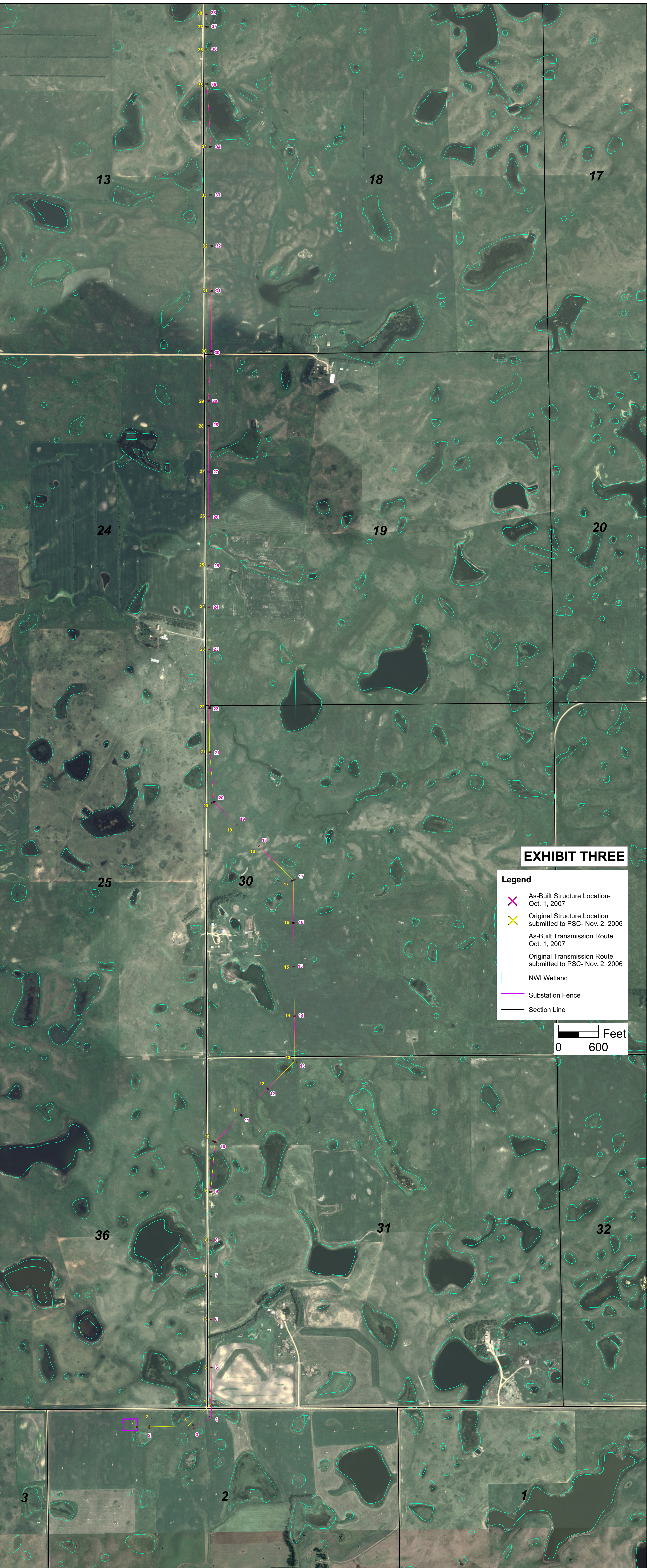


**EXHIBIT TWO**

**Legend**

-  Structure Modification Approved by PSC on March 21, 2007. This is also the As-Built Structure Location.
-  As-Built Structure Location- Oct. 1, 2007
-  Original Structure Location submitted to PSC- Nov. 2, 2006
-  Route Modification Approved by PSC on March 21, 2007. This is also the As-Built Route Location.
-  As-Built Transmission Route- Oct. 1, 2007
-  Original Transmission Route submitted to PSC- Nov. 2, 2006
-  NWI Wetland
-  Substation Fence
-  Section Line





**EXHIBIT THREE**

- Legend**
- As-Built Structure Location- Oct. 1, 2007
  - Original Structure Location submitted to PSC- Nov. 2, 2006
  - As-Built Transmission Route Oct. 1, 2007
  - Original Transmission Route submitted to PSC- Nov. 2, 2006
  - NWI Wetland
  - Substation Fence
  - Section Line

0 600 Feet

**Table 1**  
**As-Built versus Originally Proposed Structure Locations**  
**Tatanka Transmission Line**

Structure ID	# of Original Proposed Poles	# of As-Built Poles	Approximate Deviation from Proposed Structure	Reason for Change from Original Location
1	1	Not shot	Not surveyed because of switchyard fence barrier	
2	3	3	Structure shifted SE 8.5 ft, 1 pole added 112 ft NE	The structures were routed to go from the Hoffman to Holm property and were crossing over a non-participating landowner's property without having an aerial easement for this design. Structure had to be shifted to accommodate for the new design.
3	3	3	Structure shifted E 84 ft	
4	3	3	Structure shifted S 200ft	
5	2	2	No change	
6	2	2	No change	
7	2	2	No change	
8	2	2	No change	
9	2	2	Structure shifted E 7 ft	Structures shifted to move anchors out of section line road easements.
10	3	3	Structure shifted SE 12 ft	
11	2	2	No change	
12	2	2	No change	
13	3	3	No change	
14	2	2	No change	
15	2	2	No change	
16	2	2	No change	
17	3	3	No change	
18	2	2	No change	
19	2	2	No change	
20	3	3	Structure shifted NE 6 ft	Structures shifted to move anchors out of section line road easements.
21	2	2	Structure shifted E 8 ft	
22	2	2	Structure shifted S 13 ft	Was in the section line R.O.W. and had to be moved to be outside.
23	2	2	No change	
24	2	2	No change	
25	2	2	No change	
26	2	2	No change	
27	2	2	No change	
28	2	2	No change	

Structure ID	# of Original Proposed Poles	# of As-Built Poles	Approximate Deviation from Proposed Structure	Reason for Change from Original Location
29	2	2	No change	
30	2	2	No change	
31	2	2	No change	
32	2	2	No change	
33	2	2	No change	
34	2	2	No change	
35	2	2	Structure shifted N 12.5 ft	Structure 35 was moved North out of a small pond. Structures 36, 37 & 38 were shifted as a result of that change.
36	2	2	Structure shifted N 4.5 ft	
37	3	3	Structure shifted N 8 ft	
38	3	3	Structure shifted S 3 ft	
39-44	6	6	3 sets of double-pole H-frame structures changed to 6 more closely spaced monopoles. (39) pole shifted S 133 ft (40) pole shifted N 170 ft (41) pole shifted SE 58 ft (42) pole shifted NE 282 ft (43) pole shifted SE 207 ft (44) pole shifted NE 312 ft	Structures 39 through 44 were moved and changed to monopoles to place them as far from a structure owned by Nick Davis as possible while saving trees on the adjacent Barry Holmes property. <b>Note: This modification of the original route was approved by the North Dakota Public Service Commission on March 21, 2007.</b>
45	2	2	Structure shifted SE 100 ft	Structure 45 was moved for same reason as structures 39 through 44. <b>Note: This modification of the original route was approved by the North Dakota Public Service Commission on March 21, 2007.</b>
46	3	3	No change	
47	3	3	No change	
48	2	2	No change	
49	2	2	No change	
50	2	2	No change	
51	2	2	No change	
52	3	3	No change	
53	3	3	No change	
54	2	2	Structure shifted N 34 ft	The line was crossing over non-participating landowner's property (between structures 59 & 60) without having an aerial easement for this design. Structures had to be shifted to accommodate for the new design which allowed overhang on the landowner to the North East.
55	2	2	Structure shifted N 71 ft	
56	2	2	Structure shifted N 97 ft	
57	2	2	Structure shifted N 266 ft	
58	2	2	Structure shifted N 261 ft	
59	3	3	Structure shifted N 192 ft	

Structure ID	# of Original Proposed Poles	# of As-Built Poles	Approximate Deviation from Proposed Structure	Reason for Change from Original Location
60	3	3	Structure shifted N 210 ft	
61	2	2	Structure shifted N 130 ft	Same as 54-60 above.
62	2	2	Structure shifted N 73 ft	
63	3	3	No change	
64	3	3	No change	
65	2	2	Structure shifted NE 46 ft	Applicant made an agreement with the landowner during the preconstruction phase not to cut any trees between structures 70 & 71 due to the sentimental value of the trees. In order to reroute the structures with the poles that were available, structures had to be pushed out (East) to go around the trees. This modification extends North and South one mile from the avoided trees.
66	2	2	Structure shifted NE 90 ft	
67	2	2	Structure shifted SE 85 ft	
68	2	2	Structure shifted SE 354 ft	
69	2	2	Structure shifted SE 399 ft	
70	2	2	Structure shifted SE 429 ft	
71	2	2	Structure shifted SE 374 ft	
72	2	2	Structure shifted SE 481 ft	
73	2	2	Structure shifted SE 379 ft	
74	2	2	Structure shifted SE 446 ft	
75	2	2	Structure shifted SE 260 ft	
76	2	2	Structure shifted SE 232 ft	
77	2	2	Structure shifted SE 267 ft	
78	2	2	Structure shifted SE 171 ft	
79	2	2	Structure shifted SE 253 ft	
80	2	2	Structure shifted SE 203 ft	
81	2	2	Structure shifted SE 95 ft	
82	3	3	Structure shifted SE 3.7 ft and S 2 ft, respectively. Center of overall structure did not change.	Structure # 82 was moved due to a section line error in the area and due to conflicts with the landowner to the West.
83	2	2	Structure shifted SE 5 ft	Moved to avoid wetland production area. Was in the section line R.O.W. and had to be moved to be outside. Also structure was changed when Mortenson decided to modify the structure. A new H2 was replaced after H2 pole appeared to not be an adequate design. Pole was drilled in a

Structure ID	# of Original Proposed Poles	# of As-Built Poles	Approximate Deviation from Proposed Structure	Reason for Change from Original Location
				new location.
84	2	2	No change	
85	2	2	Structure shifted W 25 ft	Moved to avoid Waterfowl Production Area. Structure was moved at owner request to avoid a field access road.
86	2	2	No change	
87	2	2	Structure shifted W 25 ft	Moved to avoid Waterfowl Production Area.
88	2	4	No change in original pole locations. Two poles added; 44 ft NE and 29 ft SE from original poles	
89	2	2	No change	
90	3	3	No change	
91	2	2	No change	
92	2	2	Structure shifted S 46 ft	Was in the section line road R.O.W. and had to be moved to be outside.
93	2	2	No change	
94	2	2	No change	
95	2	2	No change	
96	2	2	No change	
97	2	2	No change	
98	2	2	No change	
99	2	2	No change	
100	2	2	Structure shifted S 25ft	
101	3	2	Structure location unchanged; one pole eliminated	
102	1	6	Original pole eliminated and 6 new poles added within the substation fence	