

1 aframe.pol
sta=0+00
X=2347606.49
Y=102925.80

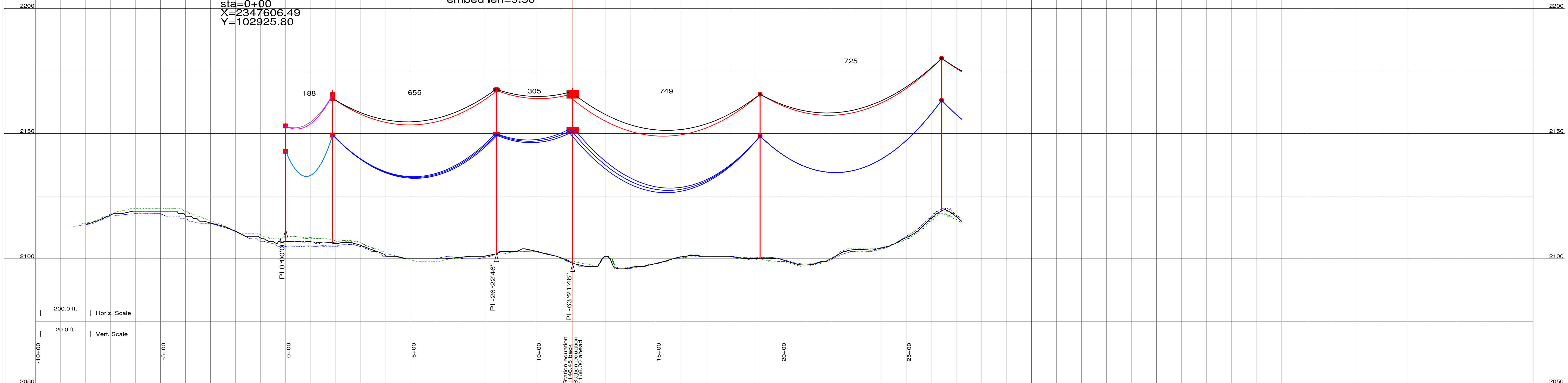
2 th-235d-70-h1_#2.pol
sta=1+88
X=2347794.32
Y=102928.39
embed len=9.00

3 th-234-75-h1.pol
sta=8+42
X=2348449.63
Y=102932.57
embed len=9.50

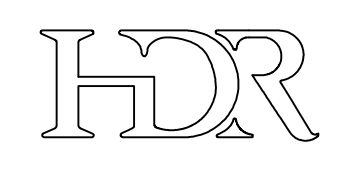
4 th-235-80-h1.#4_as-installed.pol
sta=11+68
X=2348719.13
Y=103076.37
embed len=10.00

5 th-230-75-2.pol
sta=19+16
X=2348709.87
Y=103824.82
embed len=9.50

6 th-230-70-2.pol
sta=26+42
X=2348708.42
Y=104550.12
embed len=9.00



200.0 ft. Horiz. Scale
20.0 ft. Vert. Scale



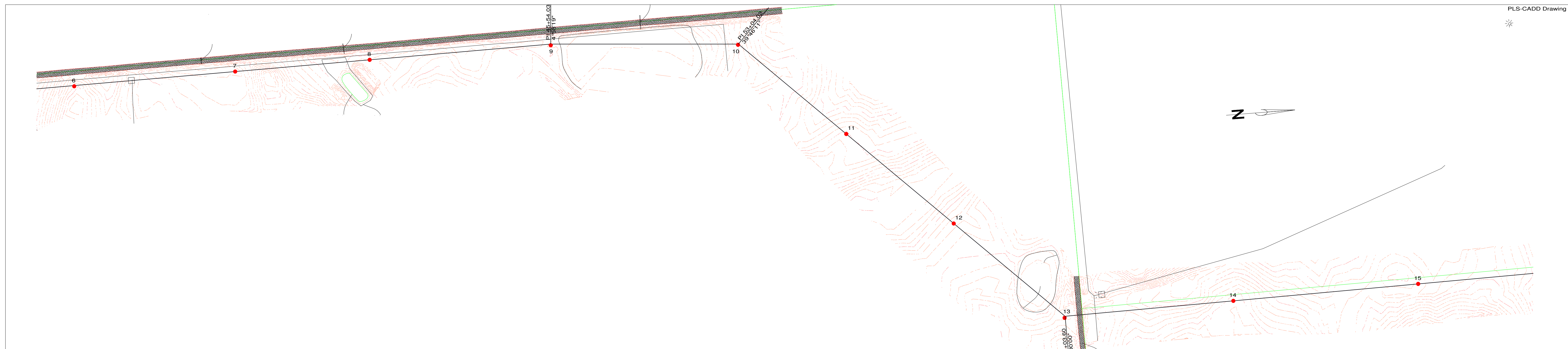
HDR Engineering, Inc.

ISSUE	DATE	DESCRIPTION
4	4-17-2008	AS BUILT
3	9-14-2007	RE-ISSUED FOR CONSTRUCTION
2	8-17-2007	RE-ISSUED FOR CONSTRUCTION
1	4-30-2007	RE-ISSUED FOR CONSTRUCTION
0	4-20-2007	ISSUED FOR CONSTRUCTION

PROJECT MANAGER	Bill Barnhart
PROJECT NUMBER	48069



TATANKA WIND FARM
230kV TRANSMISSION LINE
PLAN AND PROFILE DRAWINGS



6 th-230-70-2.pol
sta=26+42
X=2348708.42
Y=104550.12
embed len=9.00

7 th-230-75-2.pol
sta=32+88
X=2348699.40
Y=105196.20
embed len=9.50

8 th-230-75-2.pol
sta=38+28
X=2348694.38
Y=105735.86
embed len=9.50

9 th-231-85-h1(#9).pol
sta=45+54
X=2348692.62
Y=106462.08
embed len=10.50

10 th-234-75-h1.pol
sta=53+04
X=2348748.40
Y=107208.76
embed len=9.50

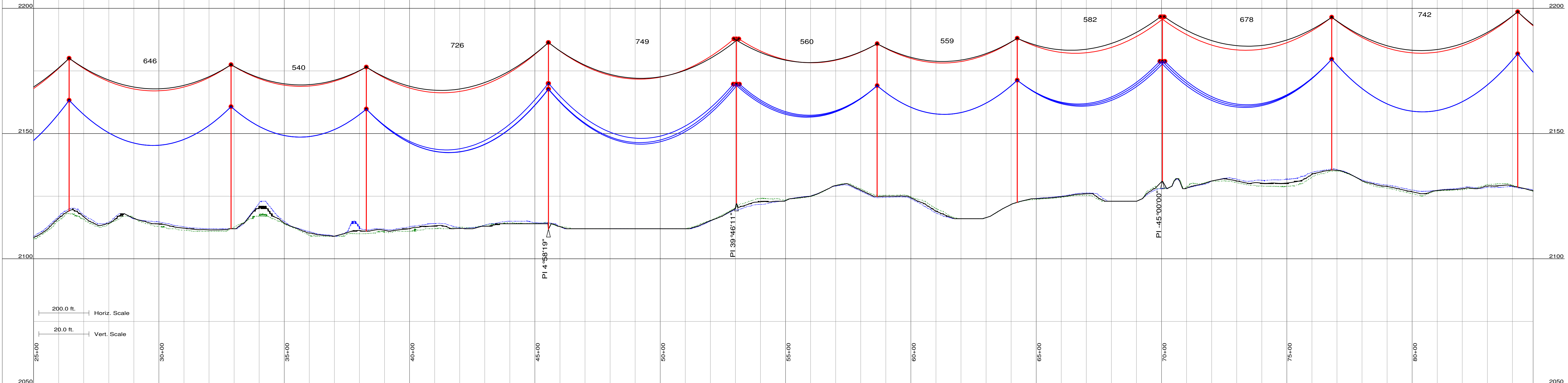
11 th-230-70-2.pol
sta=58+65
X=2349137.16
Y=107612.45
embed len=9.00

12 th-230-75-2.pol
sta=64+24
X=2349526.89
Y=108013.09
embed len=9.50

13 th-234-75-h1.pol
sta=70+04
X=2349936.78
Y=108425.86
embed len=9.50

14 th-230-70-2.pol
sta=76+79
X=2349921.41
Y=109103.66
embed len=9.00

15 th-230-80-2.pol
sta=84+21
X=2349911.16
Y=109845.66
embed len=10.00



200.0 ft. Horiz. Scale
20.0 ft. Vert. Scale

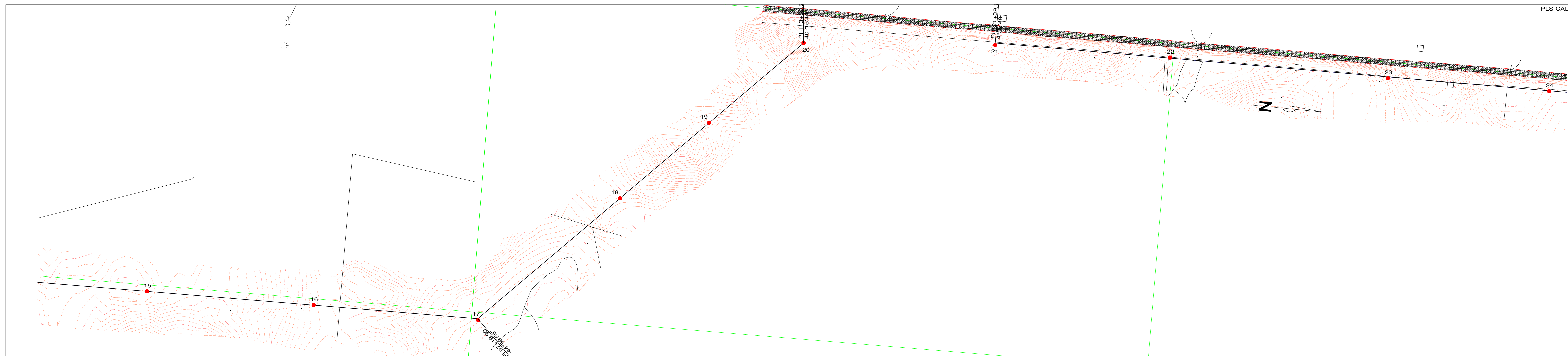


ISSUE	DATE	DESCRIPTION
4	4-17-2008	AS BUILT
3	9-14-2007	RE-ISSUED FOR CONSTRUCTION
2	8-17-2007	RE-ISSUED FOR CONSTRUCTION
1	4-30-2007	RE-ISSUED FOR CONSTRUCTION
0	4-20-2007	ISSUED FOR CONSTRUCTION

PROJECT MANAGER	Bill Barnhart
PROJECT NUMBER	48069



TATANKA WIND FARM
230kV TRANSMISSION LINE
PLAN AND PROFILE DRAWINGS



15 th-230-80-2.pol
sta=84+21
X=2349911.16
Y=109845.66
embed len=10.00

16 th-230-80-2.pol
sta=90+76
X=2349902.12
Y=110500.27
embed len=10.00

17 th-234-75-h1.pol
sta=97+20
X=2349899.20
Y=111146.87
embed len=9.50

18 th-230-75-2.pol
sta=104+49
X=2349370.38
Y=111652.92
embed len=9.50

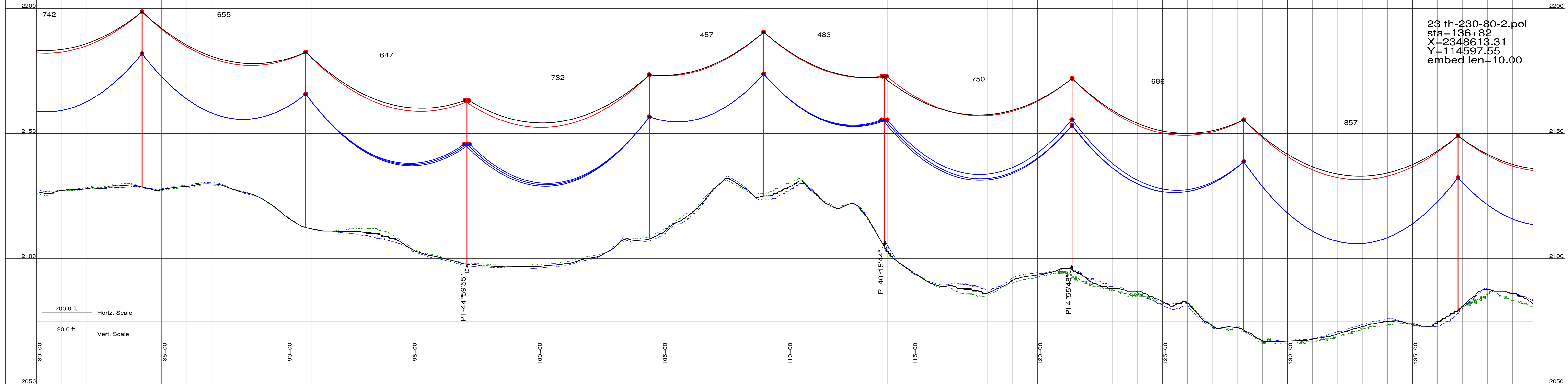
19 th-230-75-2.pol
sta=109+07
X=2349042.64
Y=111971.75
embed len=9.50

20 th-234-75-h1(#20).pol
sta=113+89
X=2348696.64
Y=112308.33
embed len=9.50

21 th-231-85-h1(#21).pol
sta=121+39
X=2348632.40
Y=113055.12
embed len=10.50

22 th-230-95-1.pol
sta=128+25
X=2348615.25
Y=113740.95
embed len=11.00

23 th-230-80-2.pol
sta=136+82
X=2348613.31
Y=114597.55
embed len=10.00



HDR Engineering, Inc.

ISSUE	DATE	DESCRIPTION
4	4-17-2008	AS BUILT
3	9-14-2007	RE-ISSUED FOR CONSTRUCTION
2	8-17-2007	RE-ISSUED FOR CONSTRUCTION
1	4-30-2007	RE-ISSUED FOR CONSTRUCTION
0	4-20-2007	ISSUED FOR CONSTRUCTION

PROJECT MANAGER	Bill Barnhart
PROJECT NUMBER	48069

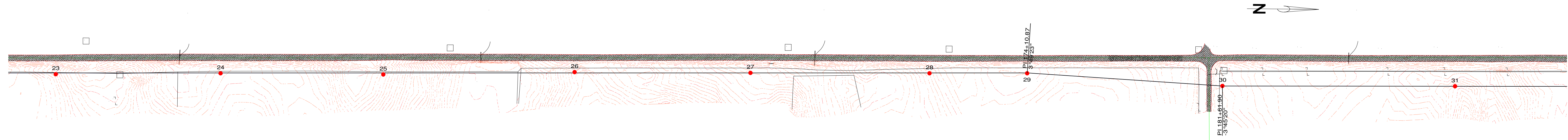


acciona
TATANKA WIND ENERGY
NORTH DAKOTA

TATANKA WIND FARM
230KV TRANSMISSION LINE
PLAN AND PROFILE DRAWINGS

SCALE SEE ABOVE

SHEET
PP-3



23 th-230-80-2.pol
sta=136+32
X=2348613.31
Y=114597.55
embed len=10.00

24 th-230-80-2.pol
sta=143+15
X=2348603.21
Y=115230.15
embed len=10.00

25 th-230-70-2.pol
sta=149+39
X=2348601.19
Y=115854.74
embed len=9.00

26 th-230-70-2.pol
sta=156+74
X=2348584.53
Y=116588.90
embed len=9.00

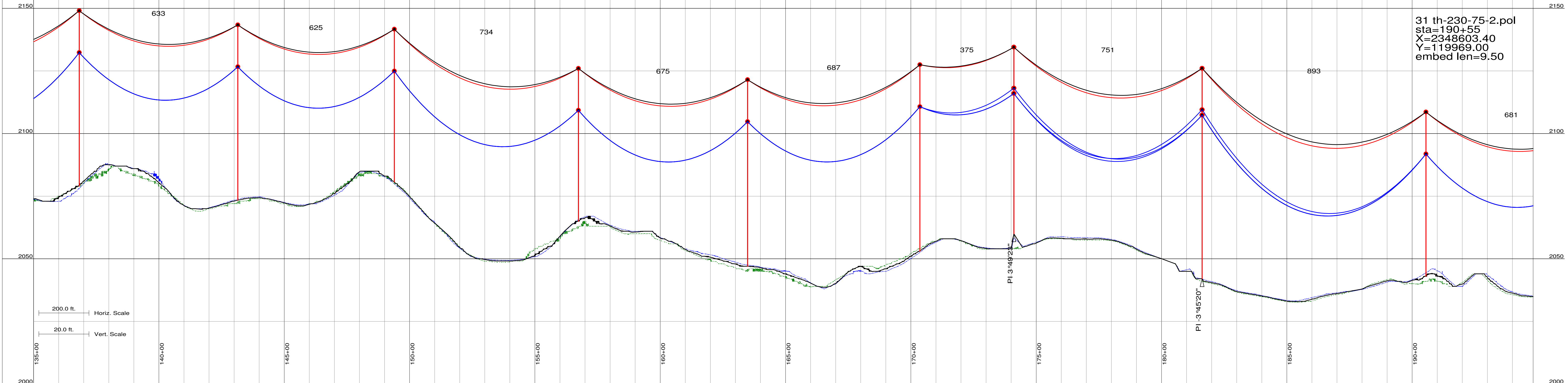
27 th-230-85-2.pol
sta=163+49
X=2348580.49
Y=117263.98
embed len=10.50

28 th-230-85-2.pol
sta=170+36
X=2348574.82
Y=117951.18
embed len=10.50

29 th-231-85-h1.#29.pol
sta=174+11
X=2348570.91
Y=118326.13
embed len=10.50

30 th-231-95-h1.pol
sta=181+62
X=2348611.66
Y=119076.00
embed len=11.00

31 th-230-75-2.pol
sta=190+55
X=2348603.40
Y=119969.00
embed len=9.50



HDR Engineering, Inc.

ISSUE	DATE	DESCRIPTION
4	4-17-2008	AS BUILT
3	9-14-2007	RE-ISSUED FOR CONSTRUCTION
2	8-17-2007	RE-ISSUED FOR CONSTRUCTION
1	4-30-2007	RE-ISSUED FOR CONSTRUCTION
0	4-20-2007	ISSUED FOR CONSTRUCTION

PROJECT MANAGER	Bill Barnhart
PROJECT NUMBER	48069

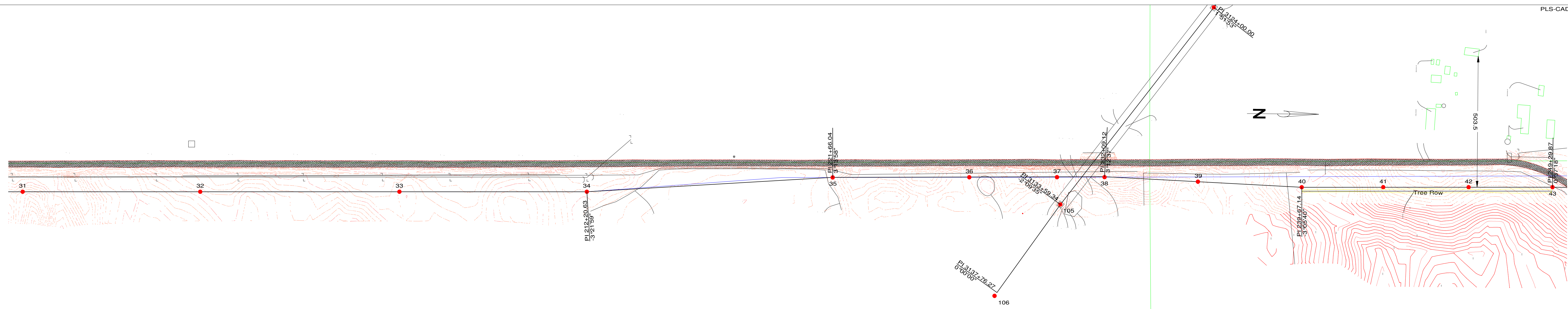


acciona
TATANKA WIND ENERGY
NORTH DAKOTA

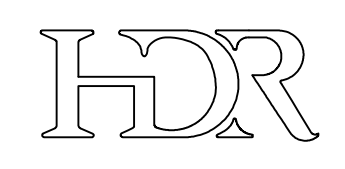
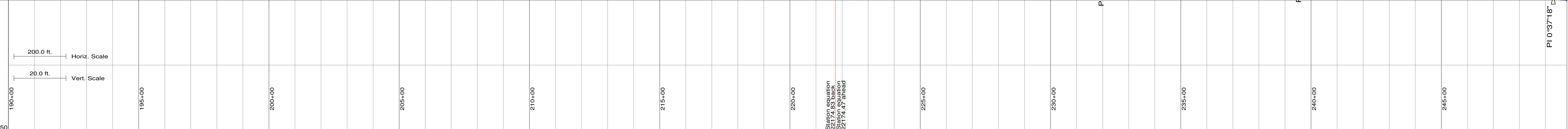
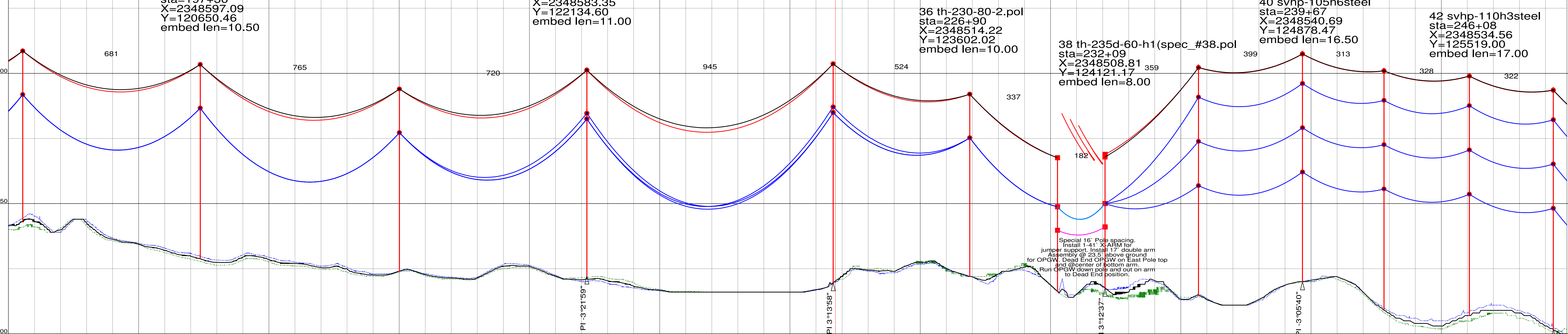
TATANKA WIND FARM
230kV TRANSMISSION LINE
PLAN AND PROFILE DRAWINGS

SCALE SEE ABOVE

SHEET
PP-4



31 th-230-75-2.pol sta=190+55 X=2348603.40 Y=119969.00 embed len=9.50	32 th-230-85-2.pol sta=197+36 X=2348597.09 Y=120650.46 embed len=10.50	33 th-230-80-2.pol sta=205+01 X=2348590.01 Y=121415.02 embed len=10.00	34 th-231-90-h1.pol sta=212+21 X=2348583.35 Y=122134.60 embed len=11.00	35 th-231-95-h1.#35.pol sta=221+66 X=2348519.68 Y=123077.85 embed len=11.00	36 th-230-80-2.pol sta=226+90 X=2348514.22 Y=123602.02 embed len=10.00	37 th-235d-60-h1(sp2)_#37.pol sta=230+27 X=2348510.71 Y=123938.73 embed len=8.00	38 th-235d-60-h1(spec_#38.pol sta=232+09 X=2348508.81 Y=124121.17 embed len=8.00	39 svhp-105h6steel sta=235+68 X=2348522.96 Y=124479.79 embed len=16.50	40 svhp-105h6steel sta=239+67 X=2348540.69 Y=124878.47 embed len=16.50	41 svhp-110h3steel sta=242+80 X=2348537.70 Y=125191.33 embed len=17.00	42 svhp-110h3steel sta=246+08 X=2348534.56 Y=125519.00 embed len=17.00	43 svhp-110h6steel sta=249+30 X=2348531.48 Y=125841.16 embed len=17.00
---	--	--	---	---	--	--	--	--	--	--	--	--



HDR Engineering, Inc.

ISSUE	DATE	DESCRIPTION
4	4-17-2008	AS BUILT
3	9-14-2007	RE-ISSUED FOR CONSTRUCTION
2	8-17-2007	RE-ISSUED FOR CONSTRUCTION
1	4-30-2007	RE-ISSUED FOR CONSTRUCTION
0	4-20-2007	ISSUED FOR CONSTRUCTION

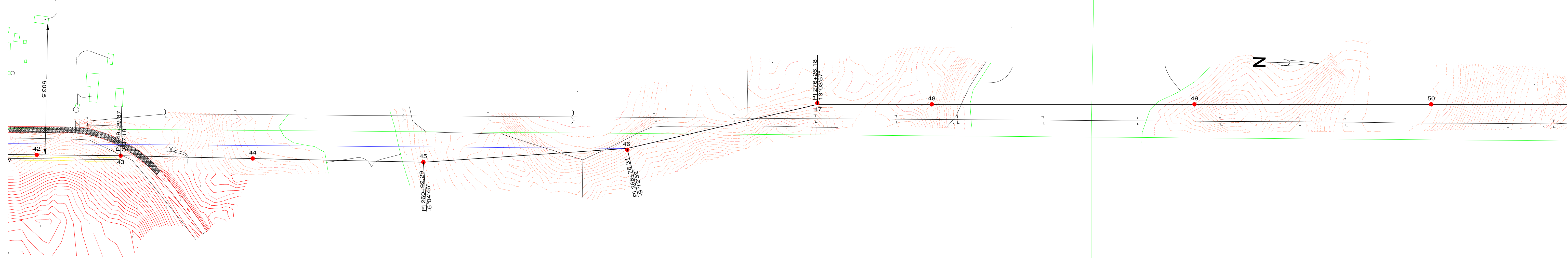
PROJECT MANAGER	Bill Barnhart
PROJECT NUMBER	48069



acciona
TATANKA WIND ENERGY
NORTH DAKOTA

TATANKA WIND FARM
230kV TRANSMISSION LINE
PLAN AND PROFILE DRAWINGS

SCALE	SEE ABOVE
SHEET	PP-5



43 svhp-110h6steel
sta=249+30
X=2348531.48
Y=125841.16
embed len=17.00

44 svhp-105h6steel
sta=254+37
X=2348532.13
Y=126348.14
embed len=16.50

45 th-231-95-h1-rw.pol
sta=260+92
X=2348532.97
Y=127003.57
embed len=11.00

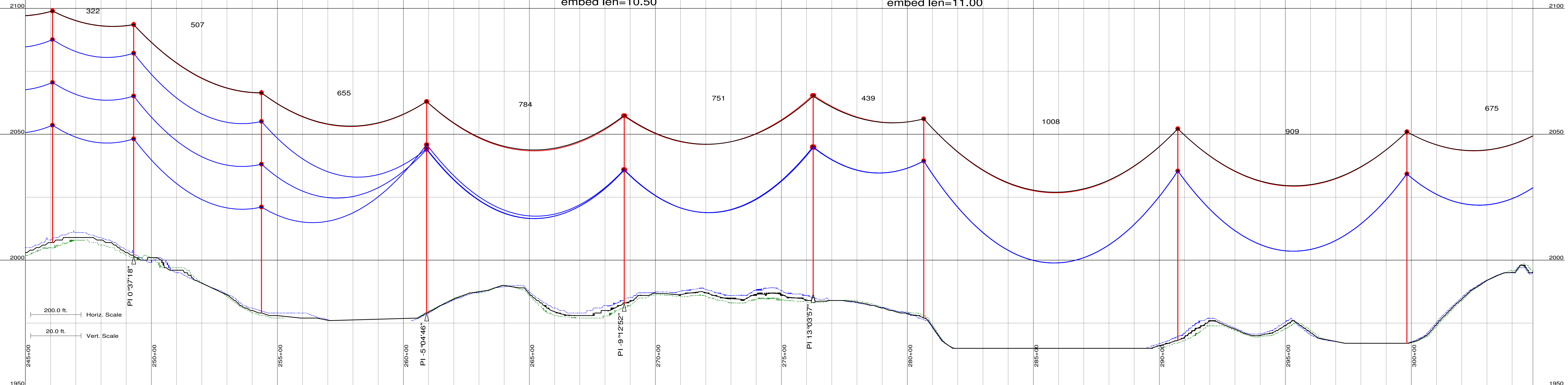
46 th-234-85-h1.pol
sta=268+76
X=2348469.49
Y=127785.44
embed len=10.50

47 th-234-90-h1.pol
sta=276+26
X=2348275.39
Y=128510.82
embed len=11.00

48 th-230-90-1.pol
sta=280+65
X=2348271.51
Y=128950.20
embed len=11.00

49 th-230-95-1.pol
sta=290+73
X=2348251.19
Y=129958.43
embed len=11.00

50 th-230-95-1.pol
sta=299+82
X=2348232.88
Y=130867.11
embed len=11.00

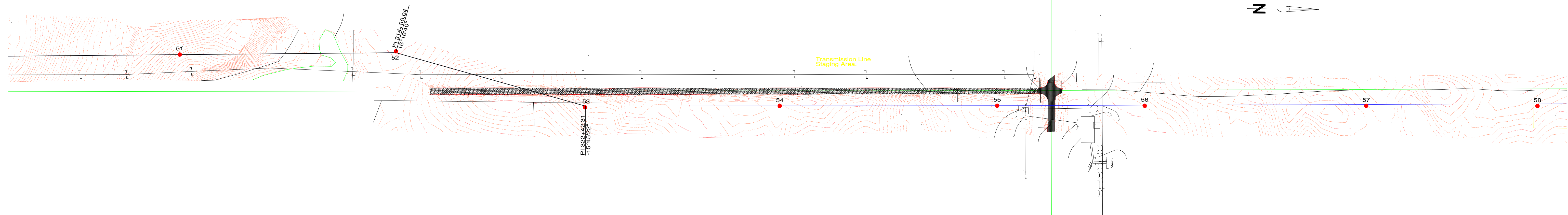


ISSUE	DATE	DESCRIPTION
4	4-17-2008	AS BUILT
3	9-14-2007	RE-ISSUED FOR CONSTRUCTION
2	8-17-2007	RE-ISSUED FOR CONSTRUCTION
1	4-30-2007	RE-ISSUED FOR CONSTRUCTION
0	4-20-2007	ISSUED FOR CONSTRUCTION

PROJECT MANAGER	Bill Barnhart
PROJECT NUMBER	48069



TATANKA WIND FARM
230kV TRANSMISSION LINE
PLAN AND PROFILE DRAWINGS



51 th-230-85-2.pol
sta=306+57
X=2348219.29
Y=131541.59
embed len=10.50

52 th-234-85-h1.pol
sta=314+86
X=2348197.62
Y=132371.18
embed len=10.50

53 th-234-85-h1.pol
sta=322+42
X=2348404.85
Y=133100.02
embed len=10.50

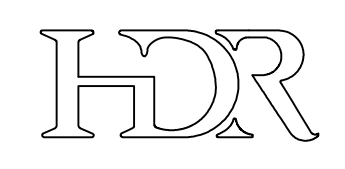
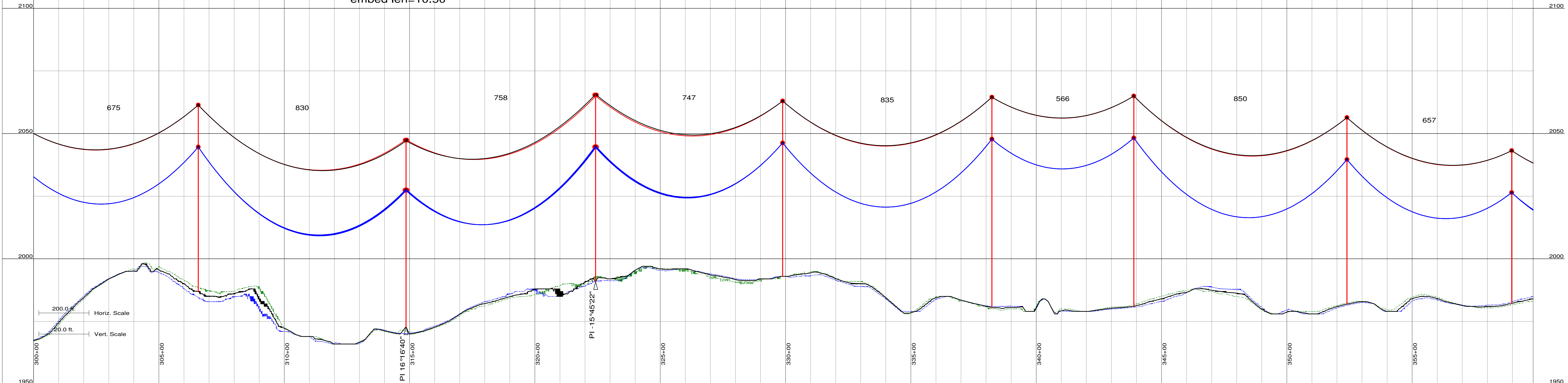
54 th-230-80-2.pol
sta=329+89
X=2348391.65
Y=133846.80
embed len=10.00

55 th-230-95-1.pol
sta=338+23
X=2348381.36
Y=134681.48
embed len=11.00

56 th-230-95-1.pol
sta=343+89
X=2348375.05
Y=135247.60
embed len=11.00

57 th-230-85-2.pol
sta=352+40
X=2348366.09
Y=136097.93
embed len=10.50

58 th-230-70-2.pol
sta=358+97
X=2348359.53
Y=136755.34
embed len=9.00



HDR Engineering, Inc.

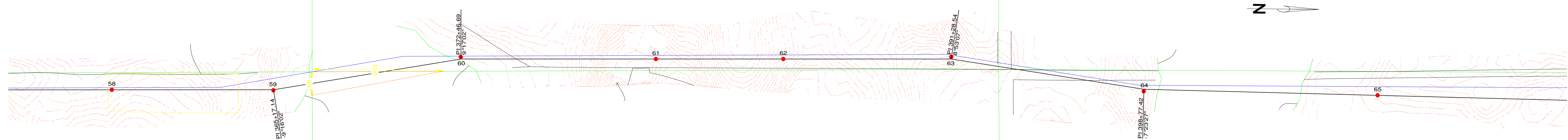
ISSUE	DATE	DESCRIPTION
4	4-17-2008	AS BUILT
3	9-14-2007	RE-ISSUED FOR CONSTRUCTION
2	8-17-2007	RE-ISSUED FOR CONSTRUCTION
1	4-30-2007	RE-ISSUED FOR CONSTRUCTION
0	4-20-2007	ISSUED FOR CONSTRUCTION

PROJECT MANAGER	Bill Barnhart
PROJECT NUMBER	48069



**TATANKA WIND FARM
230kV TRANSMISSION LINE
PLAN AND PROFILE DRAWINGS**

SCALE	SEE ABOVE
SHEET PP-7	



58 th-230-70-2.pol
sta=358+97
X=2348359.53
Y=136755.34
embed len=9.00

59 th-232-85-1.pol
sta=365+17
X=2348354.67
Y=137375.40
embed len=10.50

60 th-232-90-1.pol
sta=372+47
X=2348219.53
Y=138093.20
embed len=11.00

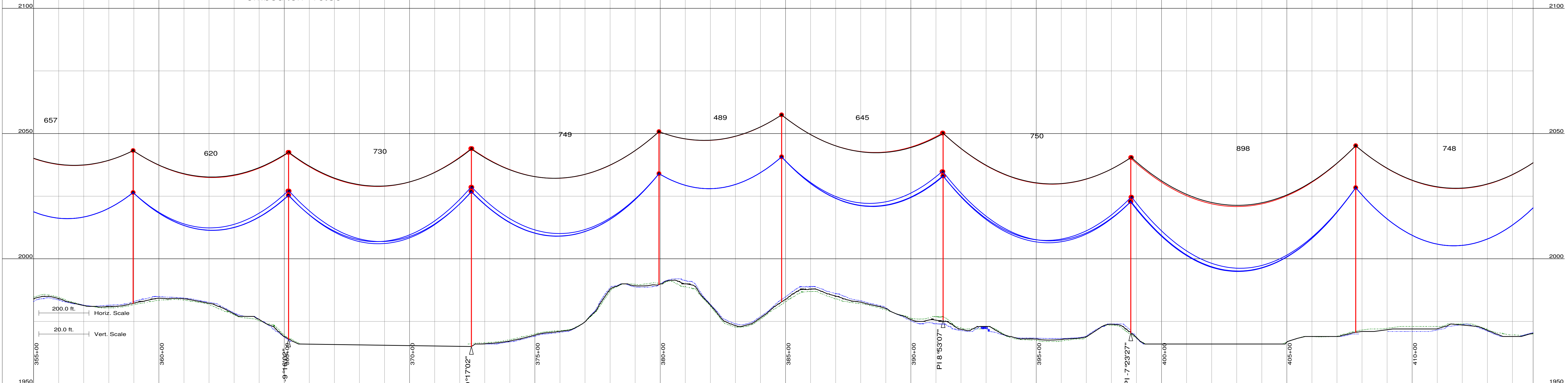
61 th-230-70-2.pol
sta=379+95
X=2348219.20
Y=138842.41
embed len=9.00

62 th-230-85-2.pol
sta=384+84
X=2348213.94
Y=139331.47
embed len=10.50

63 th-232-85-1.pol
sta=391+29
X=2348199.29
Y=139976.17
embed len=10.50

64 th-232-80-1.pol
sta=398+77
X=2348322.45
Y=140716.13
embed len=10.00

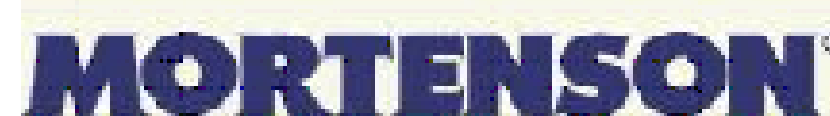
65 th-230-85-2.pol
sta=407+75
X=2348328.49
Y=141614.04
embed len=10.50



HDR Engineering, Inc.

ISSUE	DATE	DESCRIPTION
4	4-17-2008	AS BUILT
3	9-14-2007	RE-ISSUED FOR CONSTRUCTION
2	8-17-2007	RE-ISSUED FOR CONSTRUCTION
1	4-30-2007	RE-ISSUED FOR CONSTRUCTION
0	4-20-2007	ISSUED FOR CONSTRUCTION

PROJECT MANAGER	Bill Barnhart
PROJECT NUMBER	48069

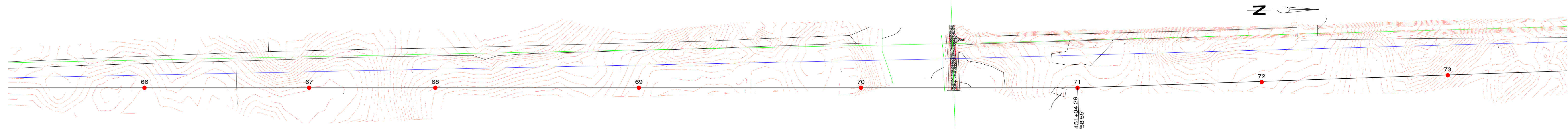


TATANKA WIND ENERGY
NORTH DAKOTA

TATANKA WIND FARM
230KV TRANSMISSION LINE
PLAN AND PROFILE DRAWINGS

SCALE SEE ABOVE

SHEET
PP-8



66 th-230-80-2.pol
sta=415+23
X=2348339.95
Y=142361.67
embed len=10.00

67 th-230-80-2.pol
sta=421+54
X=2348349.64
Y=142993.40
embed len=10.00

68 th-230-75-2.pol
sta=426+39
X=2348357.07
Y=143478.07
embed len=9.50

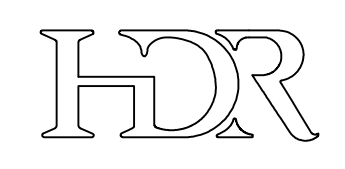
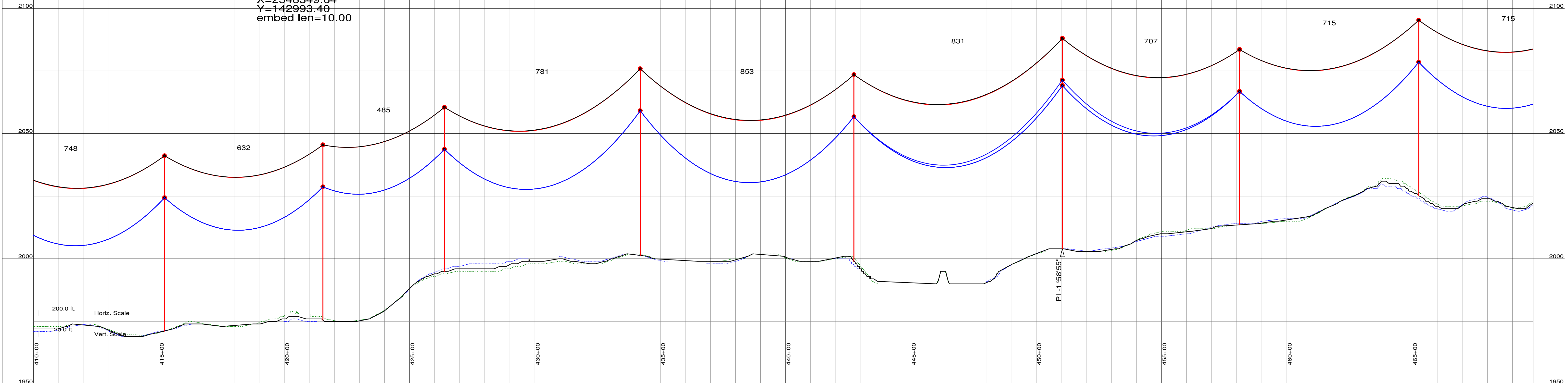
69 th-230-85-2.pol
sta=434+20
X=2348369.05
Y=144259.13
embed len=10.50

70 th-230-85-2.pol
sta=442+73
X=2348382.12
Y=145111.62
embed len=10.50

71 th-231-95-1.pol
sta=451+04
X=2348394.87
Y=145943.00
embed len=11.00

72 th-230-80-2.pol
sta=458+12
X=2348383.89
Y=146650.19
embed len=10.00

73 th-230-80-2.pol
sta=465+26
X=2348368.86
Y=147364.70
embed len=10.00



HDR Engineering, Inc.

ISSUE	DATE	DESCRIPTION
4	4-17-2008	AS BUILT
3	9-14-2007	RE-ISSUED FOR CONSTRUCTION
2	8-17-2007	RE-ISSUED FOR CONSTRUCTION
1	4-30-2007	RE-ISSUED FOR CONSTRUCTION
0	4-20-2007	ISSUED FOR CONSTRUCTION

PROJECT MANAGER	Bill Barnhart
PROJECT NUMBER	48069

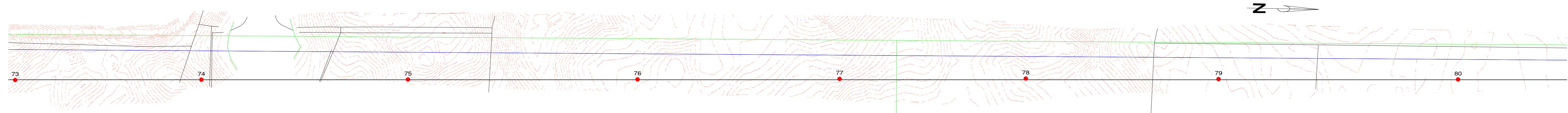


acciona
TATANKA WIND ENERGY
NORTH DAKOTA

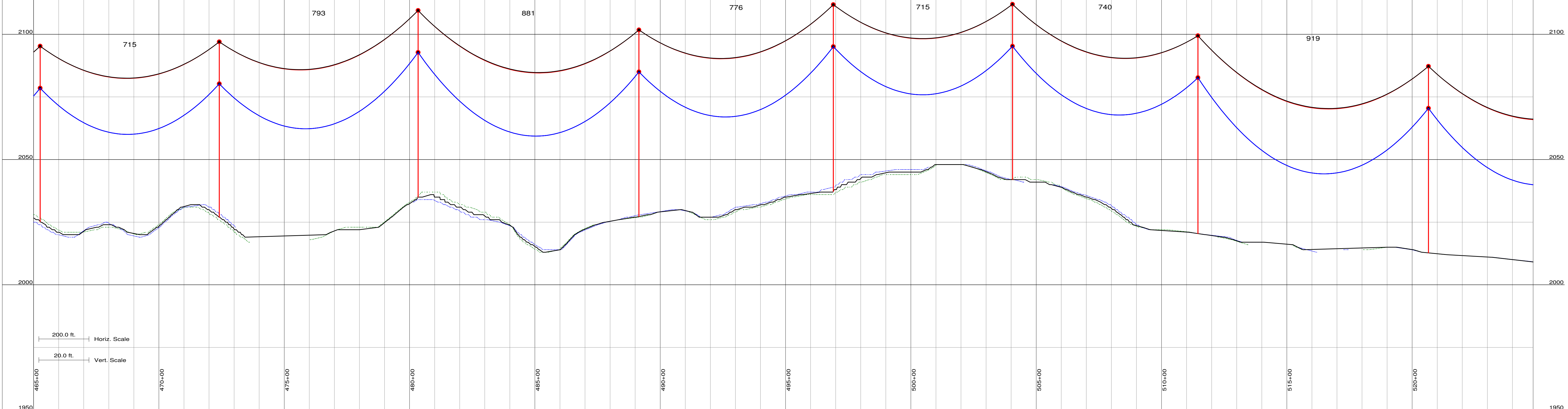
TATANKA WIND FARM
230kV TRANSMISSION LINE
PLAN AND PROFILE DRAWINGS

SCALE SEE ABOVE

SHEET
PP-9



73 th-230-80-2.pol sta=465+26 X=2348368.86 Y=147364.70 embed len=10.00	74 th-230-80-2.pol sta=472+41 X=2348353.73 Y=148079.20 embed len=10.00	75 th-230-85-2.pol sta=480+34 X=2348337.67 Y=148872.14 embed len=10.50	76 th-230-85-2.pol sta=489+15 X=2348320.32 Y=149753.10 embed len=10.50	77 th-230-85-2.pol sta=496+91 X=2348303.52 Y=150528.59 embed len=10.50	78 th-230-80-2.pol sta=504+05 X=2348288.57 Y=151243.10 embed len=10.00	79 th-230-90-1.pol sta=511+45 X=2348276.36 Y=151982.95 embed len=11.00	80 th-230-85-2.pol sta=520+65 X=2348259.88 Y=152902.27 embed len=10.50
--	--	--	--	--	--	--	--

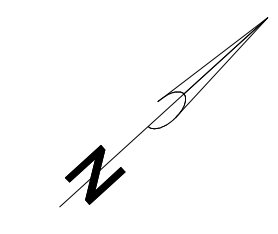
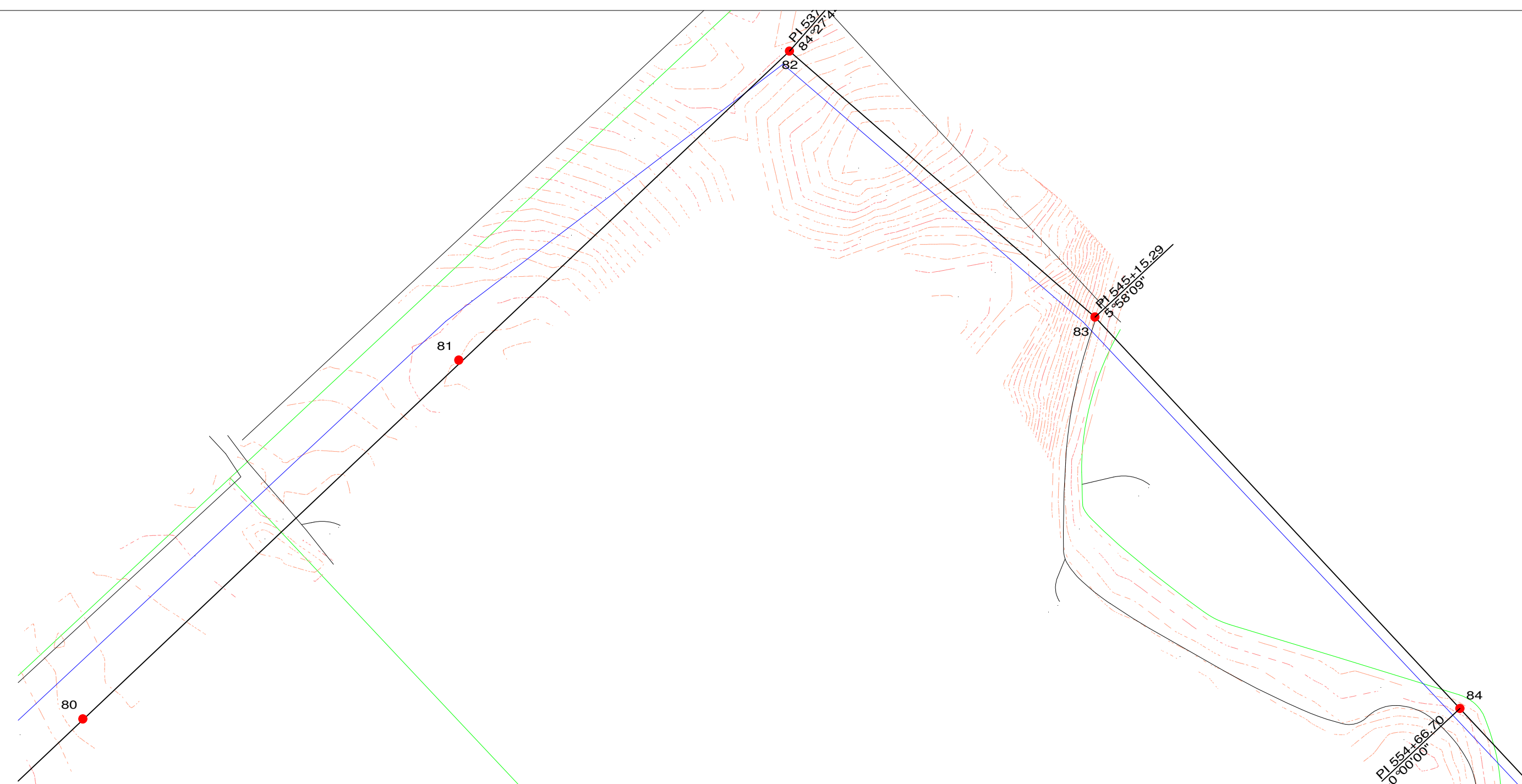


ISSUE	DATE	DESCRIPTION
4	4-17-2008	AS BUILT
3	9-14-2007	RE-ISSUED FOR CONSTRUCTION
2	8-17-2007	RE-ISSUED FOR CONSTRUCTION
1	4-30-2007	RE-ISSUED FOR CONSTRUCTION
0	4-20-2007	ISSUED FOR CONSTRUCTION

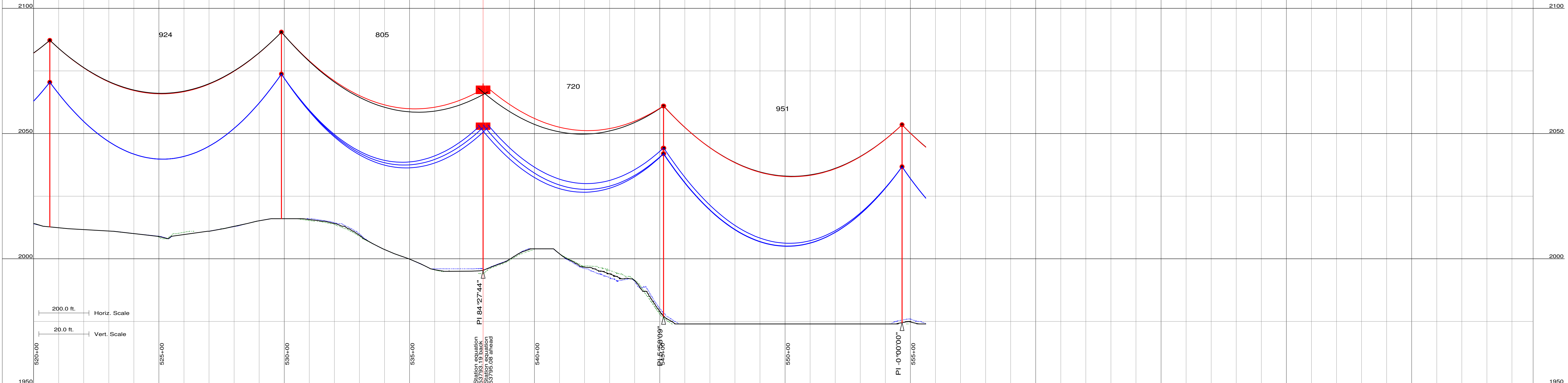
PROJECT MANAGER	Bill Barnhart
PROJECT NUMBER	48069



TATANKA WIND FARM
230kV TRANSMISSION LINE
PLAN AND PROFILE DRAWINGS



80 th-230-85-2.pol sta=520+65 X=2348259.88 Y=152902.27 embed len=10.50	81 th-230-85-h1.pol sta=529+89 X=2348238.05 Y=153825.86 embed len=10.50	82 th-235-85-h1.#79_outside-pole-guys-switched.pol sta=537+95 X=2348227.55 Y=154630.48 embed len=10.50	83 th-231-95-h2(#83)-rw_perm-soln.pol sta=545+15 X=2348942.73 Y=154713.75 embed len=11.00	84 th-230-90-1.pol sta=554+67 X=2349894.08 Y=154724.91 embed len=11.00
--	---	--	---	--



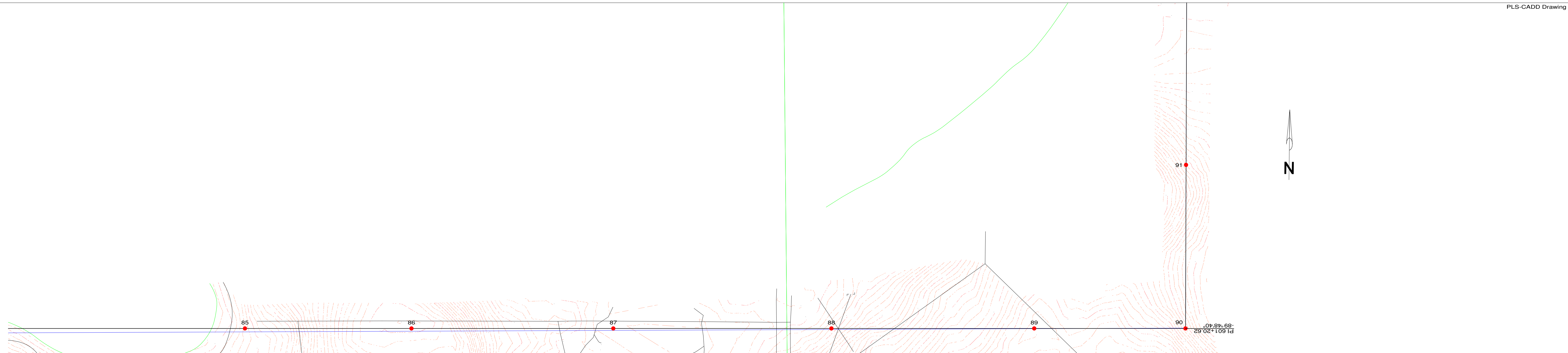
ISSUE	DATE	DESCRIPTION
4	4-17-2008	AS BUILT
3	9-14-2007	RE-ISSUED FOR CONSTRUCTION
2	8-17-2007	RE-ISSUED FOR CONSTRUCTION
1	4-30-2007	RE-ISSUED FOR CONSTRUCTION
0	4-20-2007	ISSUED FOR CONSTRUCTION

PROJECT MANAGER	Bill Barnhart
PROJECT NUMBER	48069



**TATANKA WIND FARM
230kV TRANSMISSION LINE
PLAN AND PROFILE DRAWINGS**

SCALE	SEE ABOVE
SHEET	PP-11



85 th-230-85-2.pol
sta=564+29
X=2350856.62
Y=154736.20
embed len=10.50

86 th-230-70-2.pol
sta=570+83
X=2351510.03
Y=154743.87
embed len=9.00

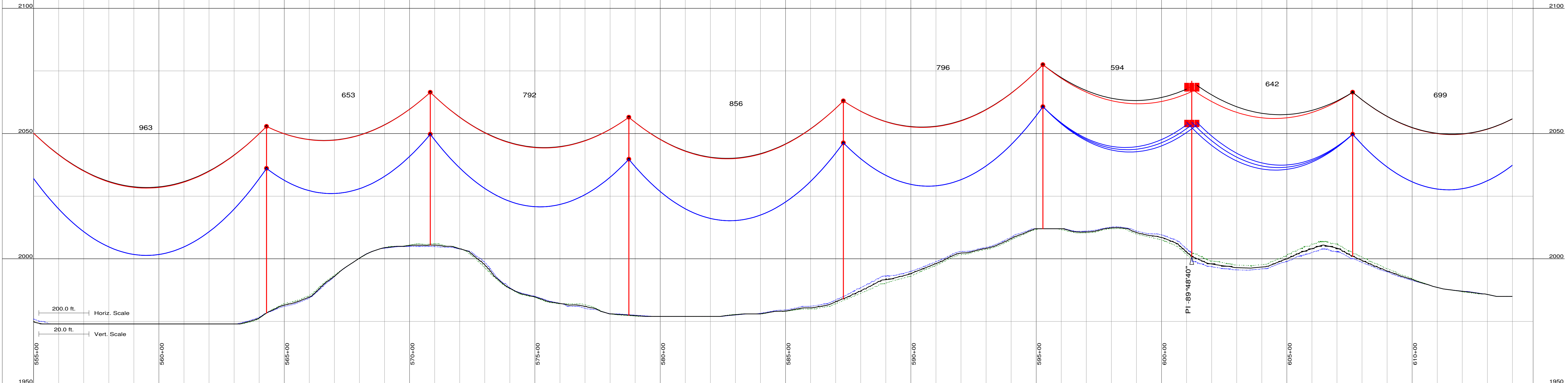
87 th-230-90-1.pol
sta=578+75
X=2352302.06
Y=154753.16
embed len=11.00

88 th-230-90-1.pol
sta=587+31
X=2353157.99
Y=154763.20
embed len=11.00

89 th-230-75-2.pol
sta=595+27
X=2353954.00
Y=154772.53
embed len=9.50

90 th-235-80-h1.#90_guys-switched.pol
sta=601+21
X=2354547.68
Y=154779.50
embed len=10.00

91 th-230-75-2.pol
sta=607+63
X=2354542.27
Y=155421.52
embed len=9.50



HDR Engineering, Inc.

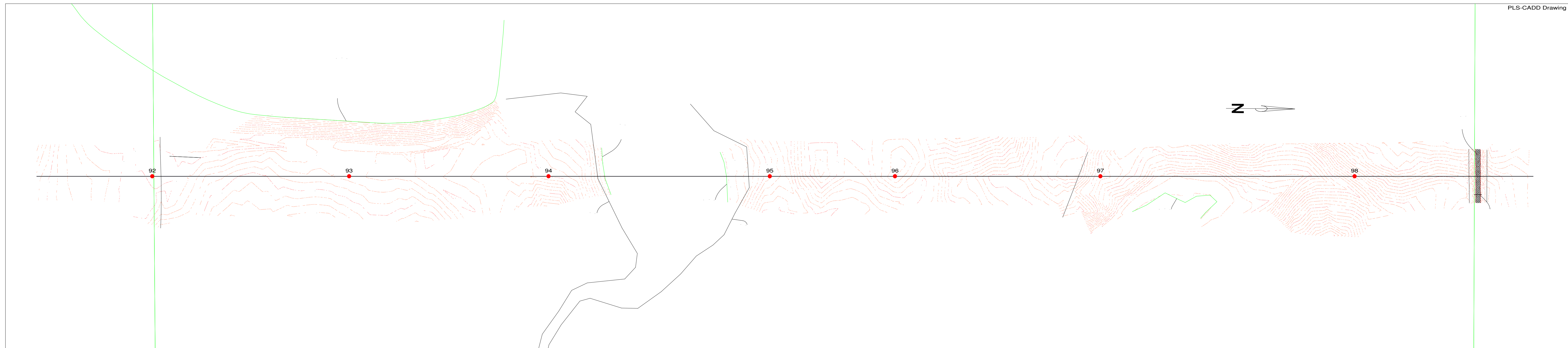
ISSUE	DATE	DESCRIPTION
4	4-17-2008	AS BUILT
3	9-14-2007	RE-ISSUED FOR CONSTRUCTION
2	8-17-2007	RE-ISSUED FOR CONSTRUCTION
1	4-30-2007	RE-ISSUED FOR CONSTRUCTION
0	4-20-2007	ISSUED FOR CONSTRUCTION

PROJECT MANAGER	Bill Barnhart
PROJECT NUMBER	48069



acciona
TATANKA WIND ENERGY
NORTH DAKOTA

TATANKA WIND FARM
230kV TRANSMISSION LINE
PLAN AND PROFILE DRAWINGS



92 th-230-85-2.pol
sta=614+62
X=2354536.37
Y=156120.96
embed len=10.50

93 th-230-80-2.pol
sta=622+49
X=2354529.73
Y=156907.86
embed len=10.00

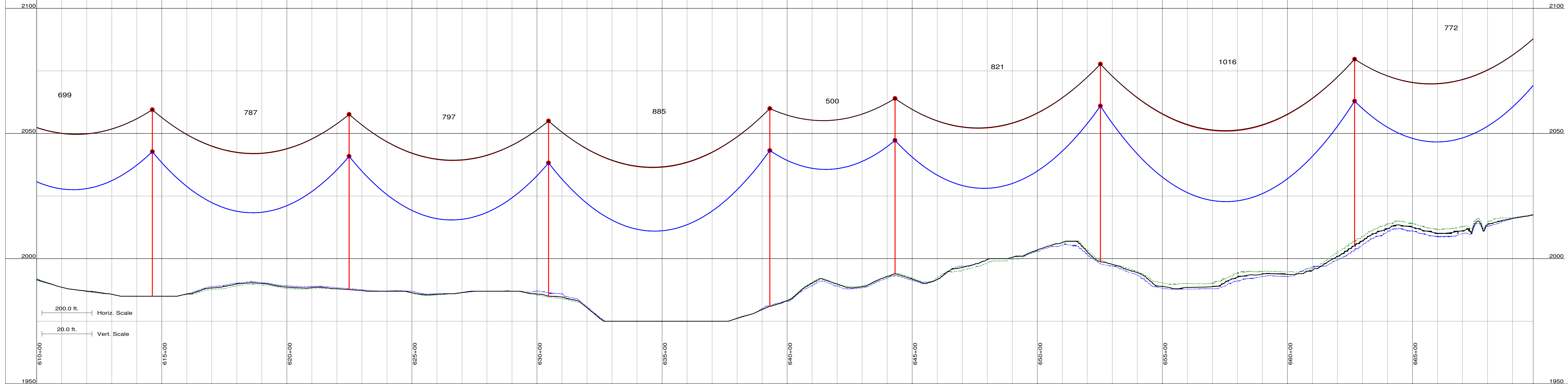
94 th-230-80-2.pol
sta=630+46
X=2354523.01
Y=157704.98
embed len=10.00

95 th-230-90-1.pol
sta=639+31
X=2354515.54
Y=158589.64
embed len=11.00

96 th-230-80-2.pol
sta=644+31
X=2354511.32
Y=159089.98
embed len=10.00

97 th-230-90-1.pol
sta=652+52
X=2354504.40
Y=159911.15
embed len=11.00

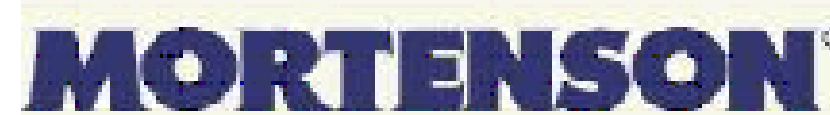
98 th-230-85-2.pol
sta=662+69
X=2354495.83
Y=160927.35
embed len=10.50



HDR Engineering, Inc.

ISSUE	DATE	DESCRIPTION
4	4-17-2008	AS BUILT
3	9-14-2007	RE-ISSUED FOR CONSTRUCTION
2	8-17-2007	RE-ISSUED FOR CONSTRUCTION
1	4-30-2007	RE-ISSUED FOR CONSTRUCTION
0	4-20-2007	ISSUED FOR CONSTRUCTION

PROJECT MANAGER	Bill Barnhart
PROJECT NUMBER	48069

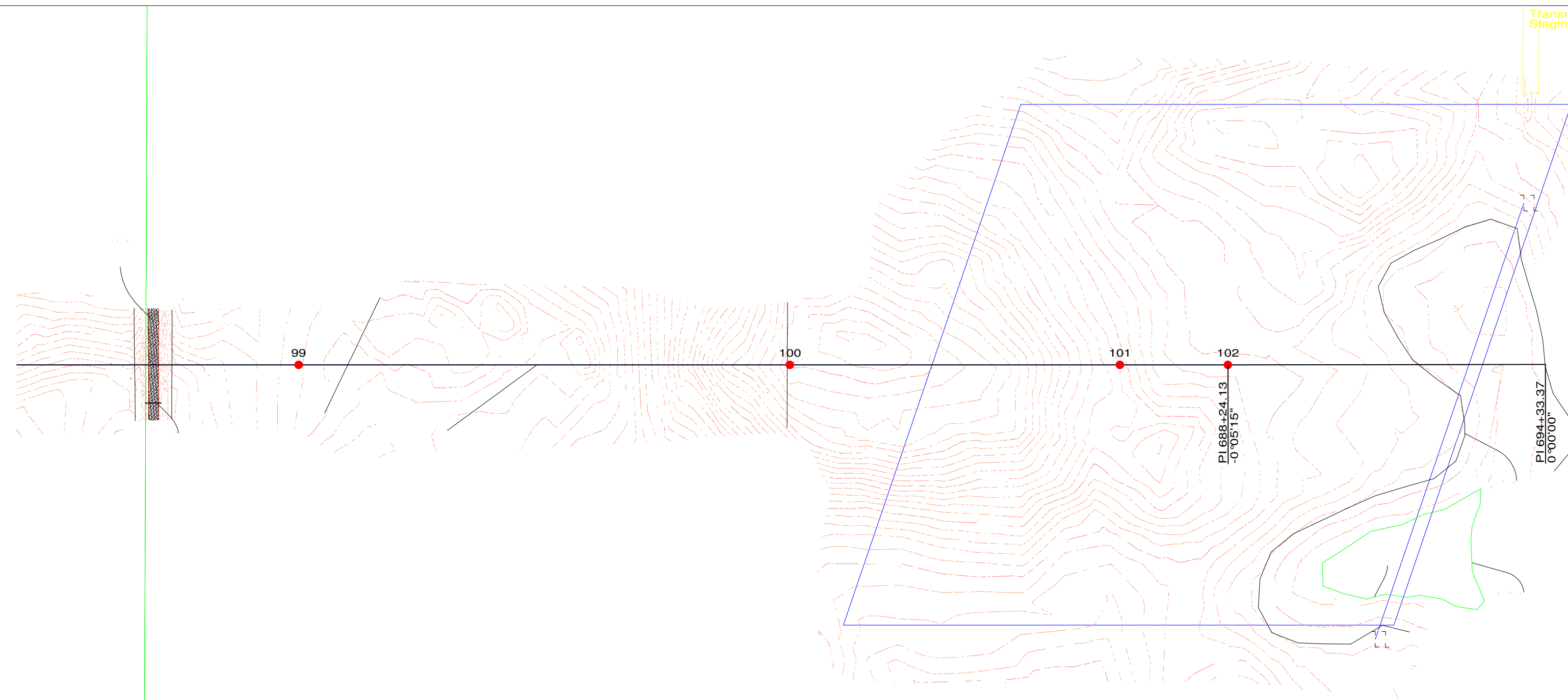


acciona
TATANKA WIND ENERGY
NORTH DAKOTA

TATANKA WIND FARM
230kV TRANSMISSION LINE
PLAN AND PROFILE DRAWINGS

SCALE SEE ABOVE

SHEET
PP-13

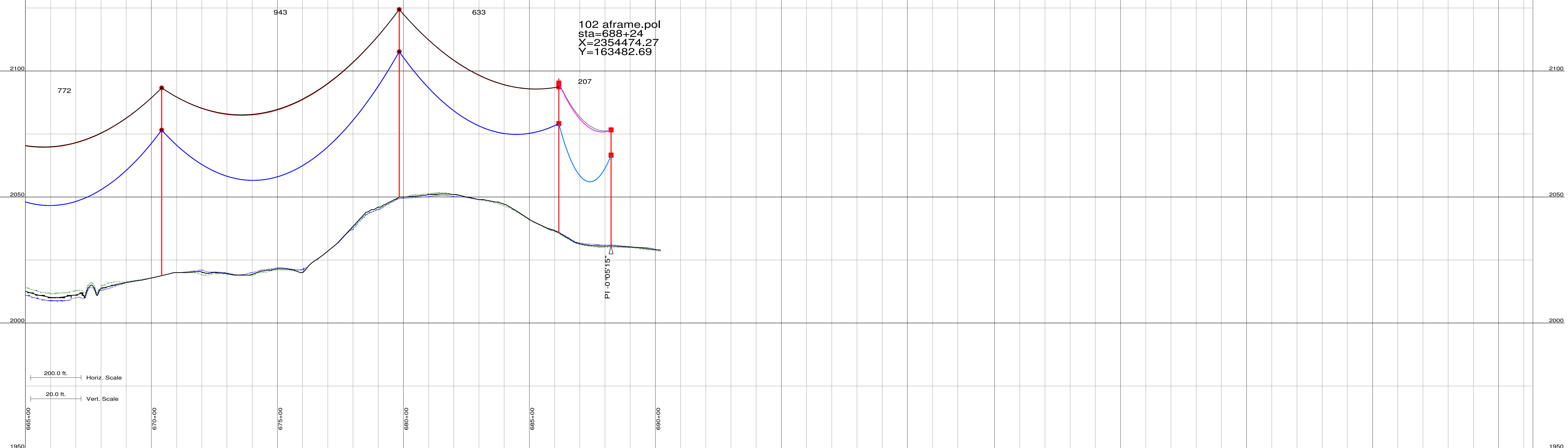


99 th-230-85-2.pol
sta=670+41
X=2354489.31
Y=161699.62
embed len=10.50

100 th-230-85-2.pol
sta=679+84
X=2354481.36
Y=162642.18
embed len=10.50

101 th-235d-70-h1_gm-101.pol
sta=686+17
X=2354476.02
Y=163275.47
embed len=9.00

102 aframe.pol
sta=688+24
X=2354474.27
Y=163482.69



ISSUE	DATE	DESCRIPTION
4	4-17-2008	AS BUILT
3	9-14-2007	RE-ISSUED FOR CONSTRUCTION
2	8-17-2007	RE-ISSUED FOR CONSTRUCTION
1	4-30-2007	RE-ISSUED FOR CONSTRUCTION
0	4-20-2007	ISSUED FOR CONSTRUCTION

PROJECT MANAGER	Bill Barnhart
PROJECT NUMBER	48069



TATANKA WIND FARM
230kV TRANSMISSION LINE
PLAN AND PROFILE DRAWINGS