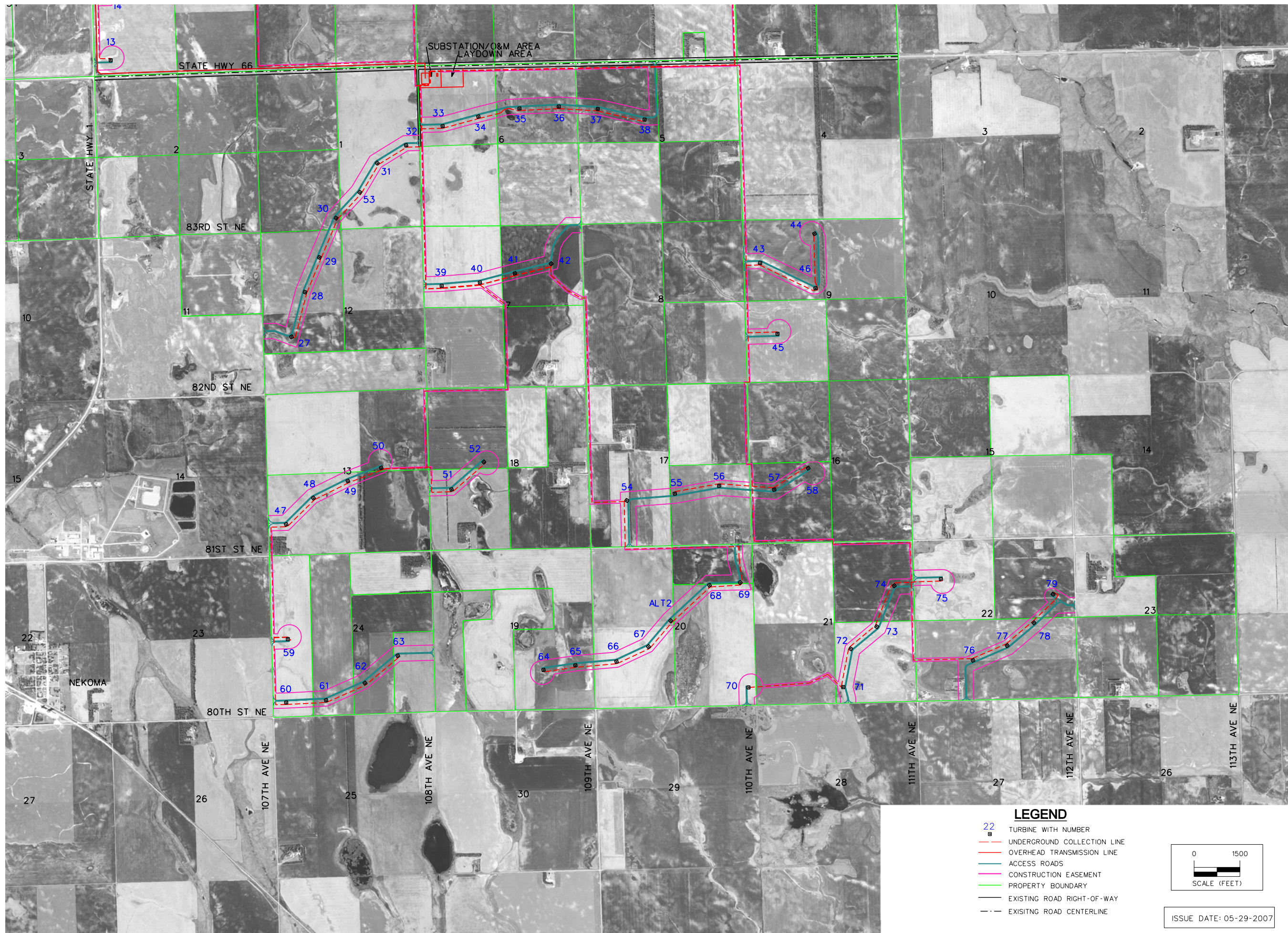
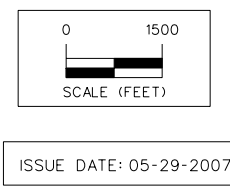


6/19/2007 11:07:44 AM
 11.4.17 1:3000
 V:\print_drivers\Color\107076.dwg
 6/19/2007 11:07:44 AM
 S:\MS_MY_INT\107076\Coord\107076.dwg



- LEGEND**
- TURBINE WITH NUMBER
 - UNDERGROUND COLLECTION LINE
 - OVERHEAD TRANSMISSION LINE
 - ACCESS ROADS
 - CONSTRUCTION EASEMENT
 - PROPERTY BOUNDARY
 - EXISTING ROAD RIGHT-OF-WAY
 - EXISTING ROAD CENTERLINE



FPL - LANGDON, ND		CAVALIER COUNTY, NORTH DAKOTA	
PRELIMINARY SITE PLAN		SNYDER & ASSOCIATES	
1751 MADISON AVENUE COUNCIL BLUFFS, IOWA 51503 712-322-3202		MARYVILLE, MO 657-826-6888 ANKENY, IA 515-885-2020 CEDAR RAPIDS, IA 319-322-8594	
1070076		Sheet 1 of 3	