



FPL ENERGY/ LANGDON WIND, LLC

Interconnect Transmission Line and Substation Construction Project

Plan of the Day (POD)

Weather Forecast: **Cloudy/showers**

High: **66°F** / Low: **45°F**

Winds: **WNW @ 10-20 mph**

Rain Chances: **30%**

Rain received this month: **1.3 inches**

Tuesday, October 2, 2007

60 Days to Completion

FPL Energy	Otter Tail Power Company
------------	--------------------------

Safety/Environmental:

- SWPPP inspection today
- Layered clothing
- Wear your High-Vis. Make sure you are seen by equipment operators
- Recognize the potential weather conditions. Select proper clothing for the conditions
- Proper signage is needed when working on or near the road right of way
- Inspect all lifting equipment each day before use. Worn, damaged and soiled slings need to be discarded
- Start each day with a Safety Tailboard. Effective communication is a must for safe/productive work

Material Delivery:

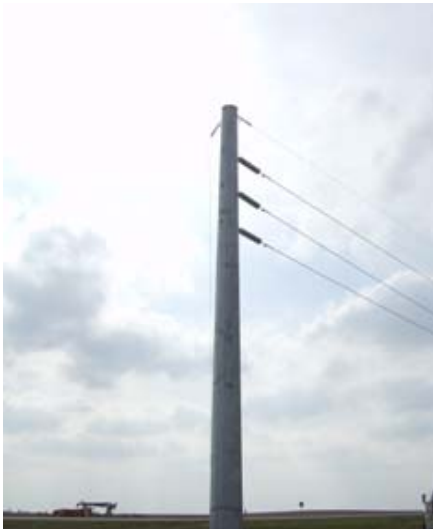
Construction Activities:

- Attach ground tails to steel
- Install switch operators
- Dig out trenwa & sand

Future Activities:

<i>RECEIVING (As of COB yesterday)</i>			
Substation Materials	Total	Rec'd	Balance
Power Transformer 115kV/178MVA	1	0	1
Motor Disconnect Switch 115kV Motor	1	1	0
Manual Disconnect Switch 115kV Manual	1	1	0
Manual Disconnect Switch 34.5kV Manual	1	1	0
INTERCONNECTING CIRCUIT BREAKER	1	1	0
Switchgear and Control House	1	0	1
CCVTs	3	0	3
Metering Units (+cold)	3	0	3
Support Steel Substation Package	1	1	0
Support Steel	1	1	0
CONSTRUCTION		% Complete	
Grading and Fencing		0.00%	
Piers Poured		100.00%	
Grounding		90.00%	
Conduit		70.00%	
Steel		80.00%	
Electrical Equipment		10.00%	
Bus Work		0.00%	
Control Building		0.00%	
Control and Power Cable		0.00%	
Testing		0.00%	

Interconnect Transmission Line



<i>RECEIVING (As of COB Yesterday)</i>				
MATERIALS	Received	Balance	% Received	
Steel Structures	8	0	100.00%	
Steel Cages	8	0	100.00%	
Insulators and Assemblies	804	0	100.00%	
954 Cardinal ACSR	181,960	0	100.00%	
OPGW Arrival	58,333	0	100.00%	
CONSTRUCTION		Complete	Balance	% Complete
Poles Framed	153	0	100.00%	
Poles Drilled	153	0	100.00%	
Poles Set - Deadends	7	0	100.00%	
Poles Set - Tangents	153	0	100.00%	
Down Guys Framed	49	0	100.00%	
Structures Grounded (must include testing - as of 10/2 NONE tested)	153	0	100.00%	
Stringing and Clipping (Miles)	4.1	6.1	40.20%	
Energize	0	0	0.00%	

All balances are based on approximate calculations and may be subject to change.

Plan of the Day contents shall not be forwarded or distributed without prior written consent of FPL Energy.