

Figure 2

Phase 1

JUST WIND

2470 FAIRVIEW LANE
MOUND, MN 55364

| Revision | Date | Number | By |
|----------|------|--------|----|
| | | | |
| | | | |
| | | | |
| | | | |

PLAN NOTES OR GENERAL NOTES



PRELIMINARY

February 27, 2007

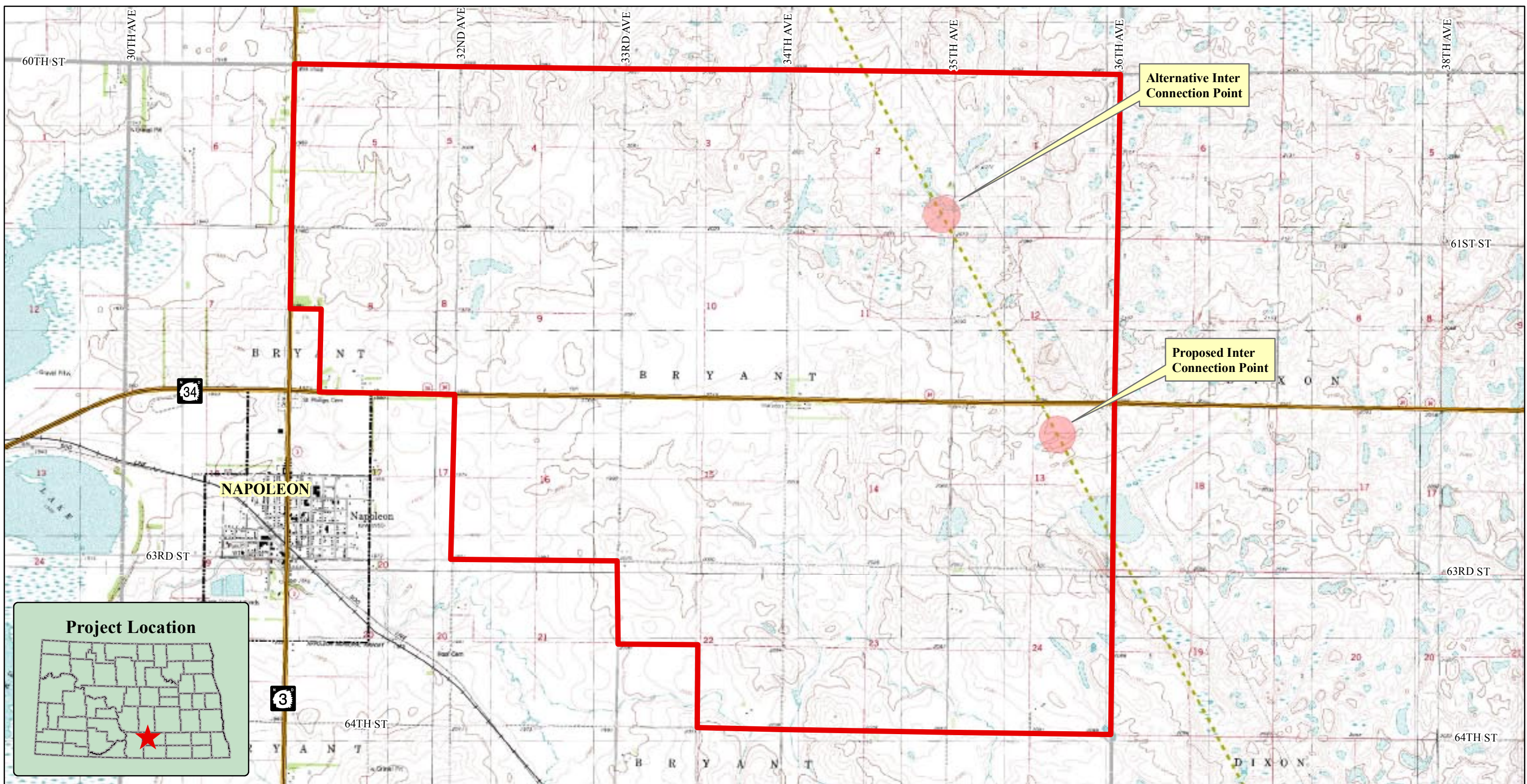
Ulteigengineers

5301 East River Road, Suite 303
 Minneapolis, Minnesota 55421
 Phone: 763.571.2000 Fax: 763.571.1100
 Omaha - Detroit Lakes - Fargo - Minneapolis - Grand Forks
 Web: www.ultieg.com
 Drawn By: RTZ
 Checked By: CBN
 Approved By:

NAPOLEON WINDFARM
 BOUNDARY MAP -
 PHASE I
 NAPOLEON, ND

Project Name: _____
 Date: February 27, 2007
 Sheet: 1 of 1

E001



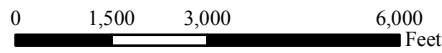
Alternative Inter Connection Point

Proposed Inter Connection Point

 Phase I Project Boundary

 Township Line

 Existing 345kv Transmission Line

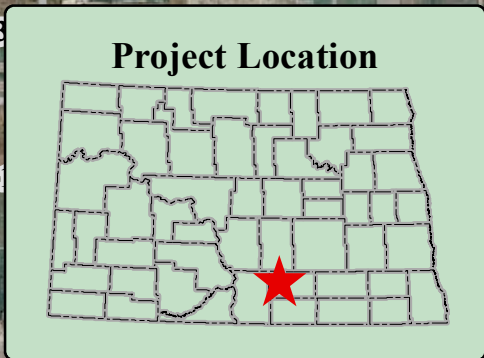
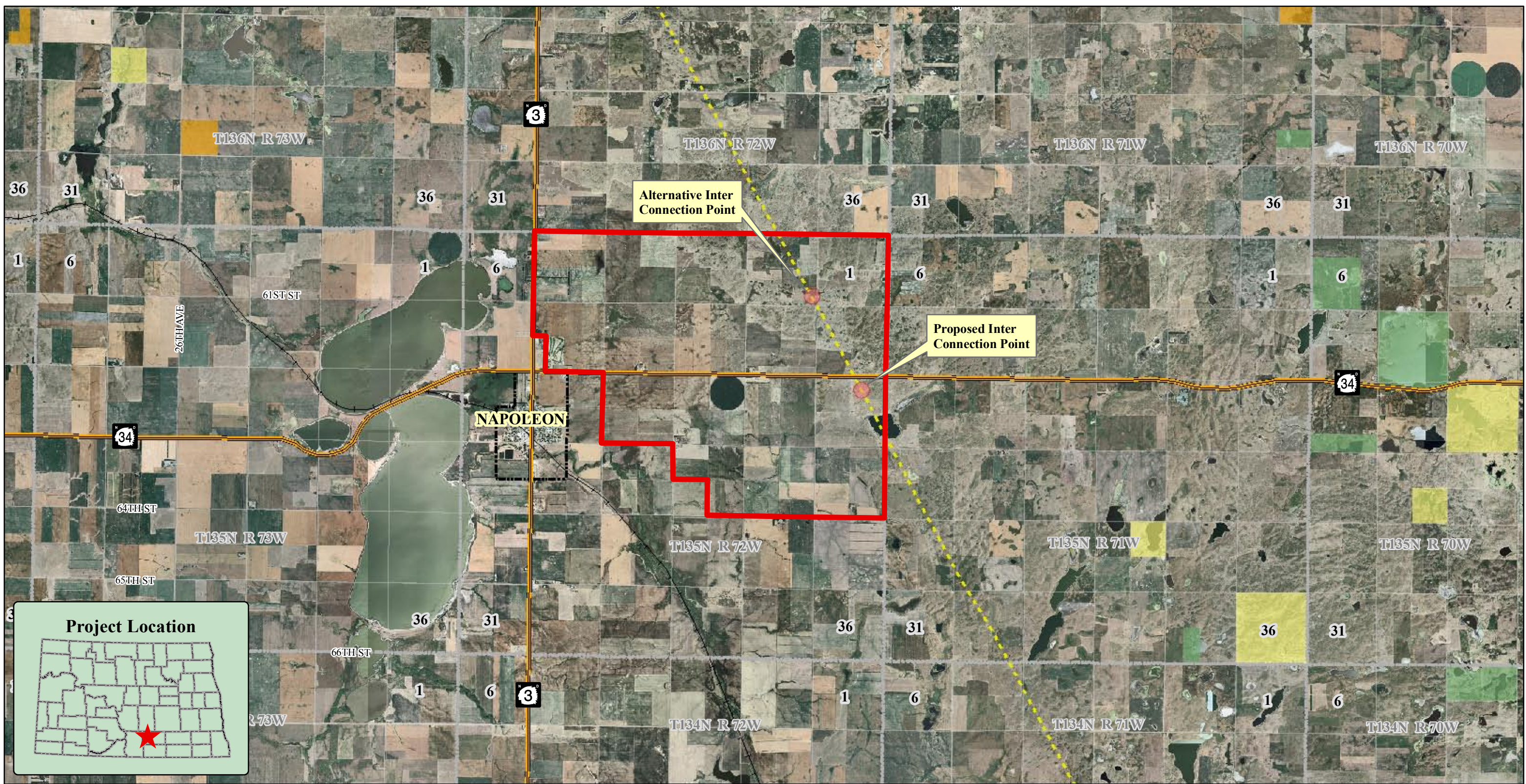


Topographic Background Map - Phase I

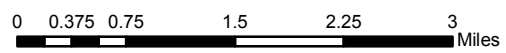
| | | | | | |
|--------------------|------------------|-------------|--------------------------|-------------------|--------|
| Scale: AS SHOWN | Drawn by: CLS | Checked by: | Project No.: 5192-000 | Date: 03/27/07 | Sheet: |
|--------------------|------------------|-------------|--------------------------|-------------------|--------|



Data downloaded from the ND GIS Data Hub. Background is USGS topographic map downloaded from the USDA-NRCS Spatial Data Gateway.



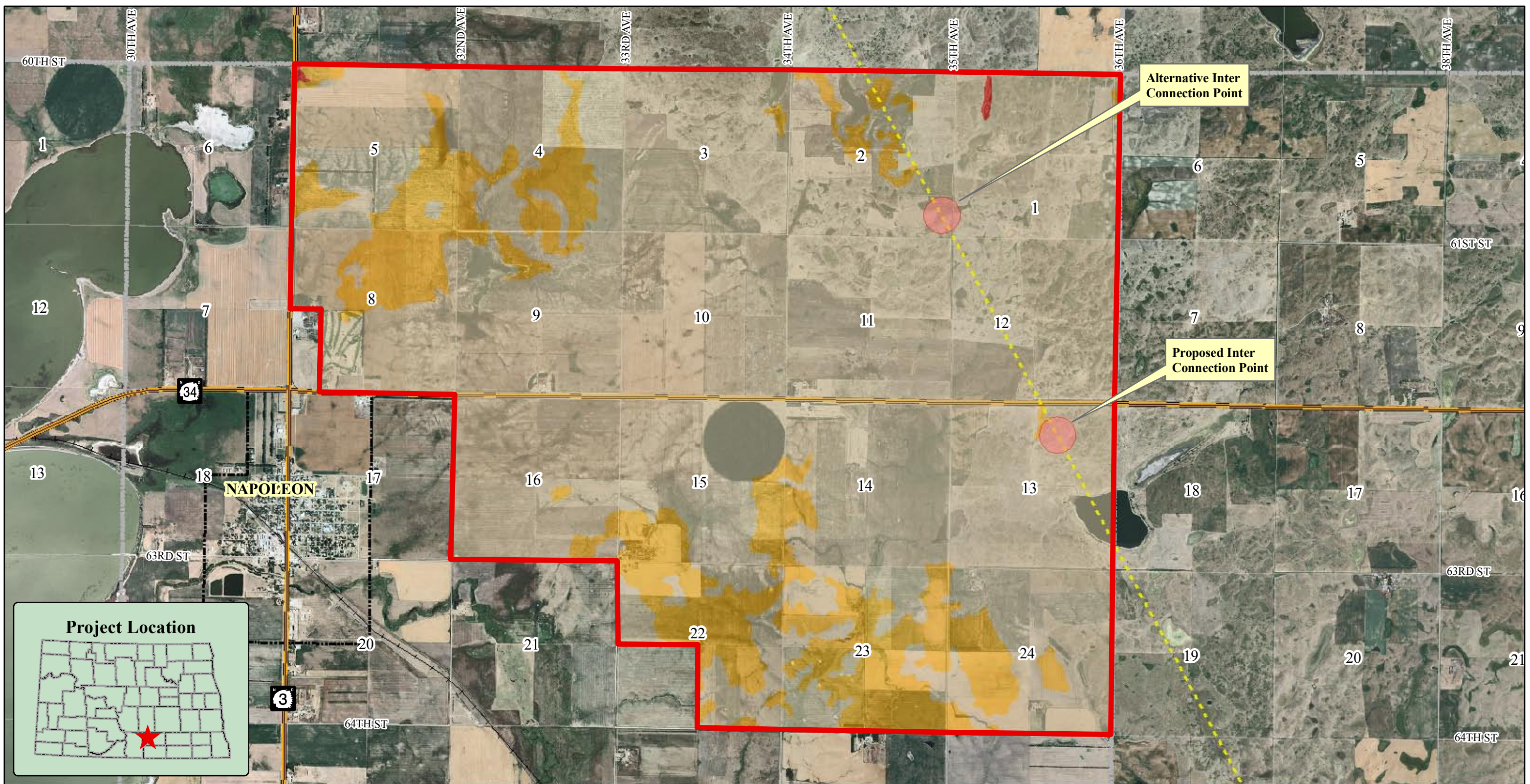
- Phase I Project Boundary
- State Highway
- Existing 345kv Transmission Line
- Corporate Boundary
- Township Line
- Railroad
- Federal Land Ownership
US Fish & Wildlife
- Waterfowl Production Area
- State Land Ownership
ND Land Department
- ND Game & Fish



Location Map - Phase I

| | | | | | |
|--------------------|------------------|-------------|--------------------------|-------------------|--------|
| Scale: AS SHOWN | Drawn by: CLS | Checked by: | Project No.: 5192-000 | Date: 03/27/07 | Sheet: |
|--------------------|------------------|-------------|--------------------------|-------------------|--------|

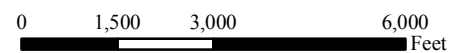
Data downloaded from the ND GIS Data Hub.
Background is 2006 USDA-FSA Aerial Photography.



Prime Farmland Classification

- Farmland of statewide importance
- Prime farmland if drained
- Not prime farmland

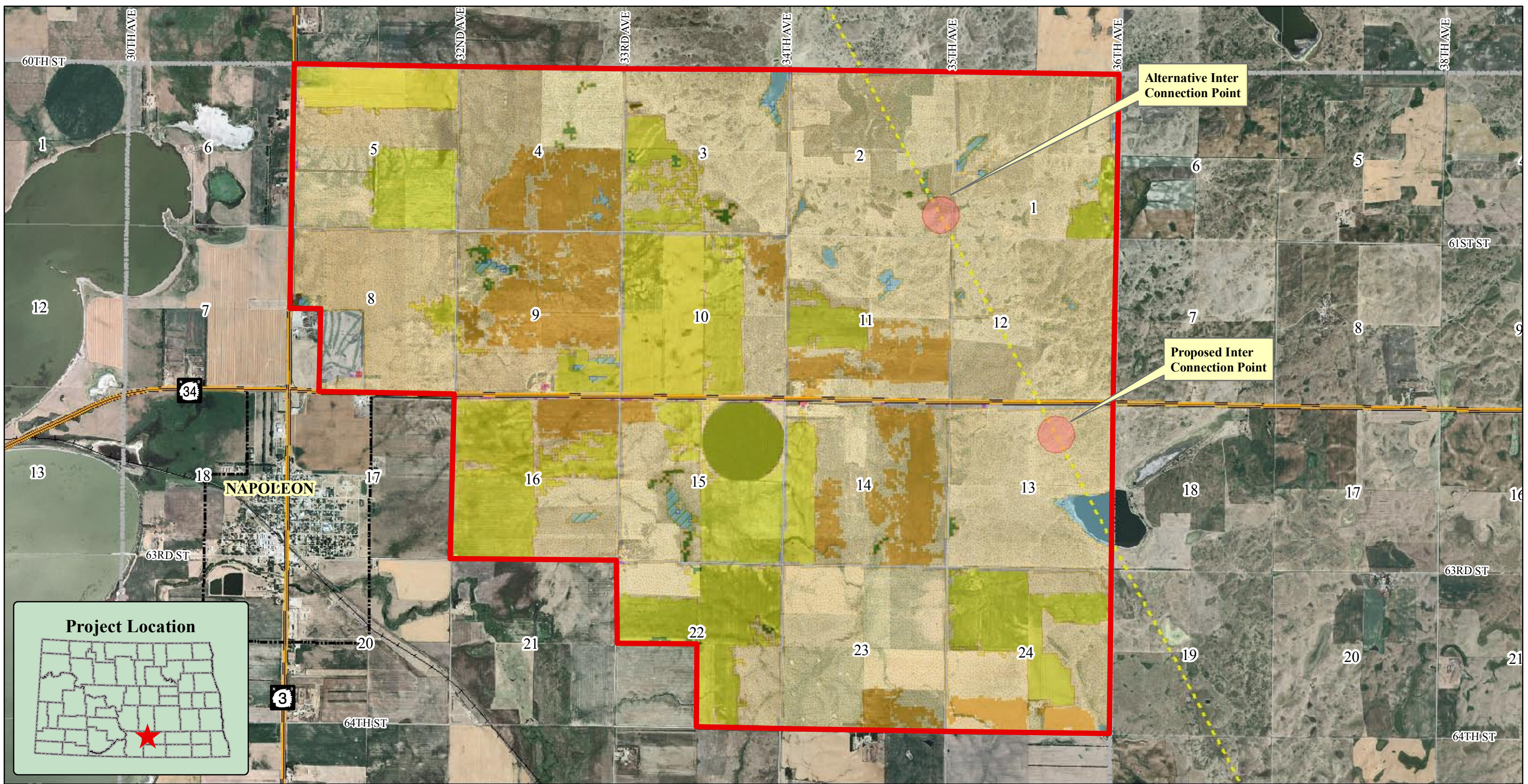
Data downloaded from the ND GIS Data Hub. SSURGO soil data downloaded from the NRCS Soil Data Mart. Prime farmland, as defined by the U.S. Department of Agriculture, is land that has the best combination of physical and chemical characteristics for producing food, feed, forage, fiber, and oilseed crops and is available for these uses. It could be cultivated land, pastureland, forestland, or other land, but it is not urban or built-up land or water areas. Farmland of statewide importance generally includes areas of soils that nearly meet the requirements for prime farmland and that economically produce high yields of crops when treated and managed according to acceptable farming methods. Some areas may produce as high a yield as prime farmland if conditions are favorable. Background is 2006 USDA-FSA Aerial Photography.



| Prime Farmland - Phase I | | | | | |
|---------------------------------|------------------|-------------|--------------------------|-------------------|--------|
| Scale: AS SHOWN | Drawn by: CLS | Checked by: | Project No.: 5192-000 | Date: 03/27/07 | Sheet: |

Houston Engineering, Inc.

Leave Nothing to Chance™

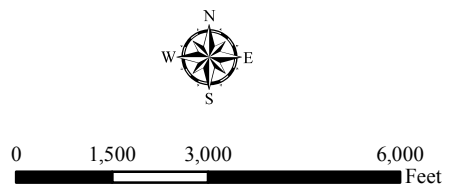


- Land Cover**
- Developed, Open Space
 - Developed, Low Intensity
 - Developed, Medium Intensity

- Cultivated Crops
- Deciduous Forest
- Grassland/Herbaceous
- Pasture/Hay

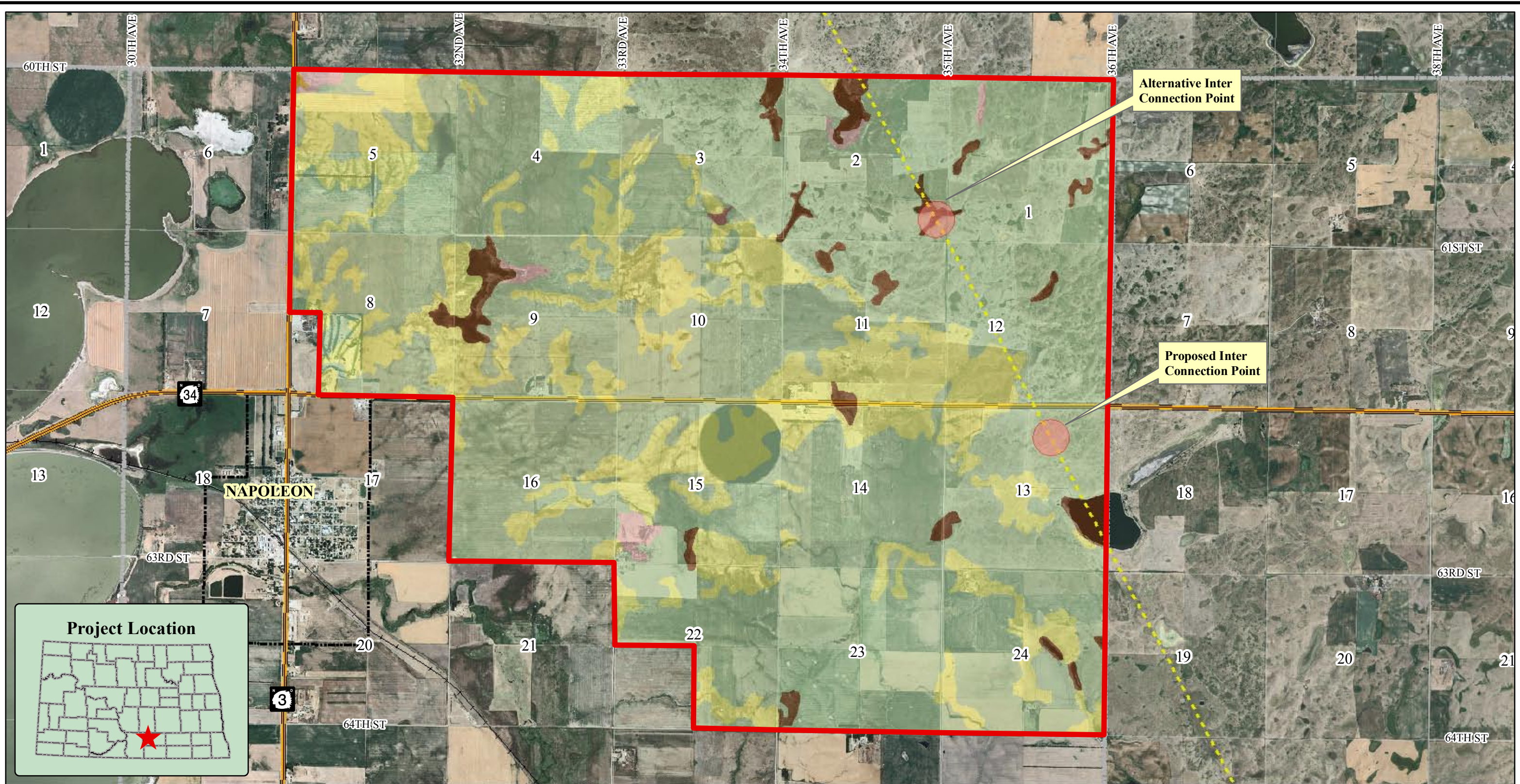
- Shrub/Scrub
- Open Water
- Wetland

Data downloaded from the ND GIS Data Hub. Land Cover data is 2001 National Land Cover Database (NLCD) downloaded from the USGS seamless data server. Background is 2006 USDA-FSA Aerial Photography.



Land Cover - Phase I

| | | | | | |
|--------------------|------------------|-------------|--------------------------|-------------------|--------|
| Scale: AS SHOWN | Drawn by: CLS | Checked by: | Project No.: 5192-000 | Date: 03/27/07 | Sheet: |
|--------------------|------------------|-------------|--------------------------|-------------------|--------|

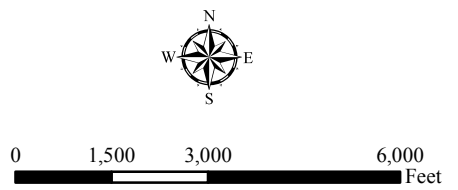


Hydrologic Soil Group

- A - Soils having a high infiltration rate (low runoff potential) when thoroughly wet.
- B - Soils having a moderate infiltration rate when thoroughly wet.
- B/D - B if drained, D if undrained.

- C - having a slow infiltration rate when thoroughly wet.
- C/D - C if drained, D if undrained.
- D - having a very slow infiltration rate (high runoff potential) when thoroughly wet.

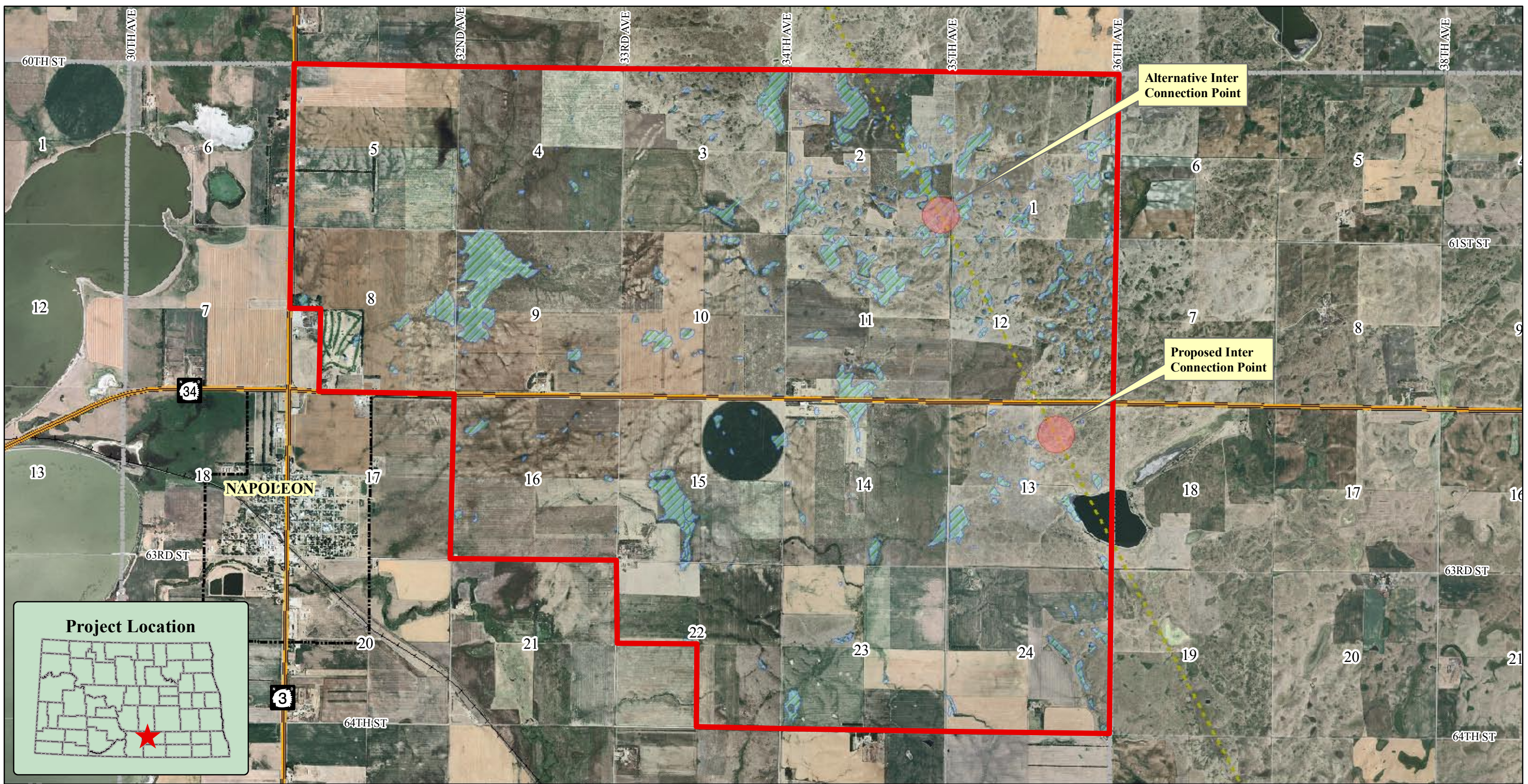
Data downloaded from the ND GIS Data Hub. SSURGO soil data downloaded from the NRCS Soil Data Mart. SSURGO metadata defines a hydrologic group as a group of soils having similar runoff potential under similar storm and cover conditions. Background is 2006 USDA-FSA Aerial Photography.



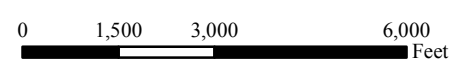
| Hydrologic Soil Group - Phase I | | | | | |
|--|------------------|-------------|--------------------------|-------------------|--------|
| Scale: AS SHOWN | Drawn by: CLS | Checked by: | Project No.: 5192-000 | Date: 03/27/07 | Sheet: |

Houston Engineering, Inc.

Leave Nothing to Chance™



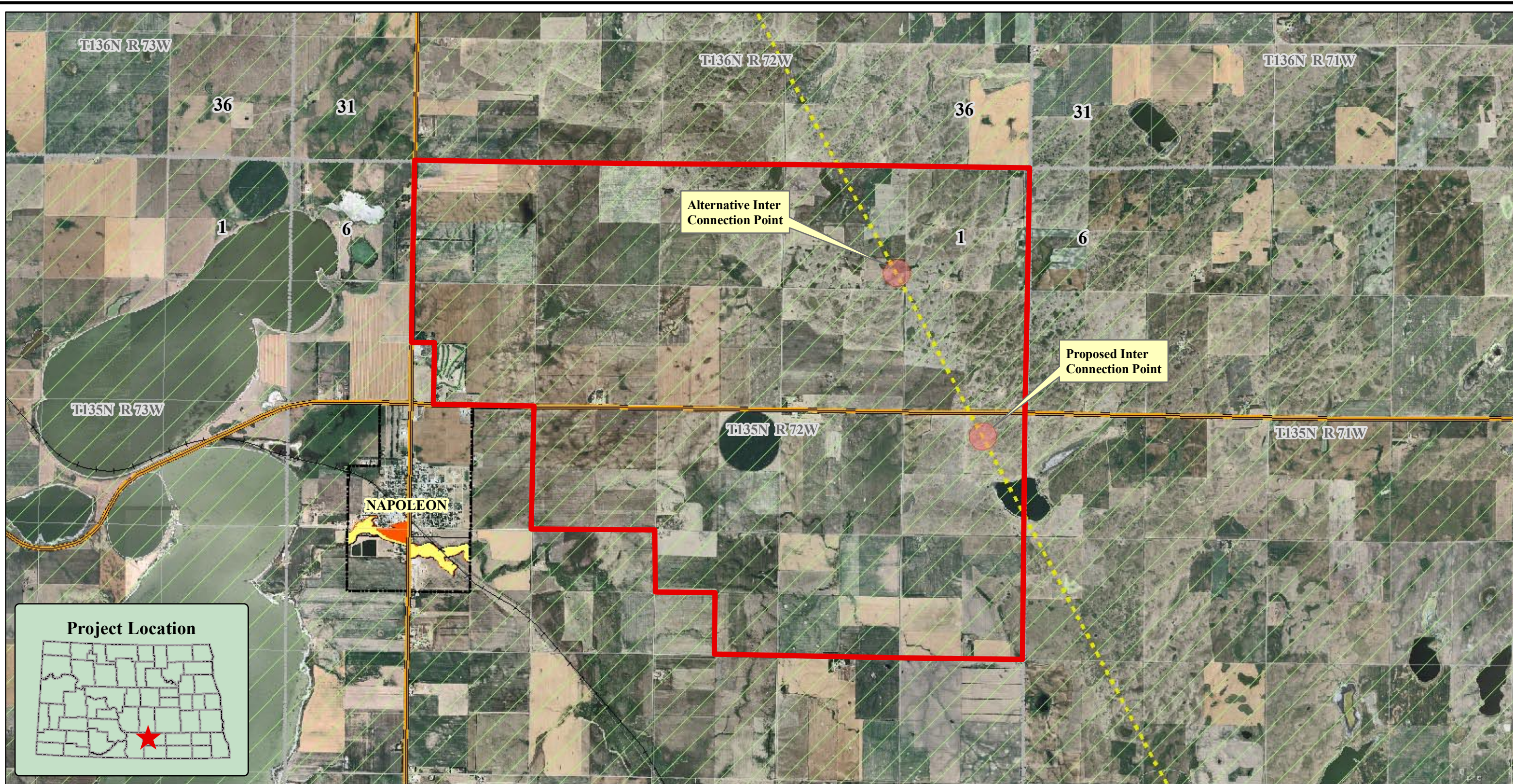
- Phase I Project Boundary
- Wetland (NWI)
- Township Line
- Existing 345kv Transmission Line
- Section Line



| Wetlands (NWI) Map - Phase I | | | | | |
|-------------------------------------|------------------|-------------|--------------------------|-------------------|--------|
| Scale: AS SHOWN | Drawn by: CLS | Checked by: | Project No.: 5192-000 | Date: 03/27/07 | Sheet: |

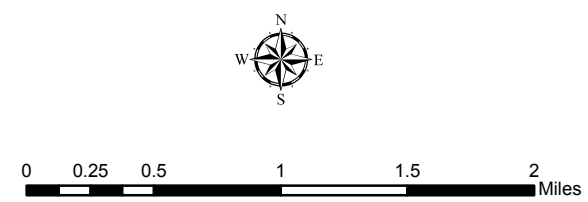
Houston Engineering, Inc.
 Leave Nothing to Chance™

Data downloaded from the ND GIS Data Hub. National Wetlands Inventory (NWI) data downloaded from the US Fish & Wildlife ftp site. Background is 2006 USDA-FSA Aerial Photography.




- Phase I Project Boundary
 - Existing 345kv Transmission Line
 - Corporate Boundary
 - Township Line
- Q3 Zones**
- X500 - Area within 500-year floodplain.
 - AE - Area within 100-year floodplain.
 - ANI - Area not included/not mapped.
 - X - Area outside of 500-year floodplain.
- State Highway
 - Railroad

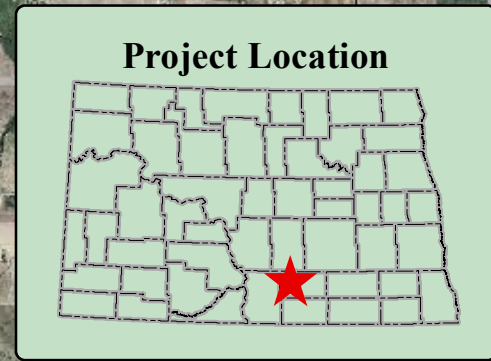
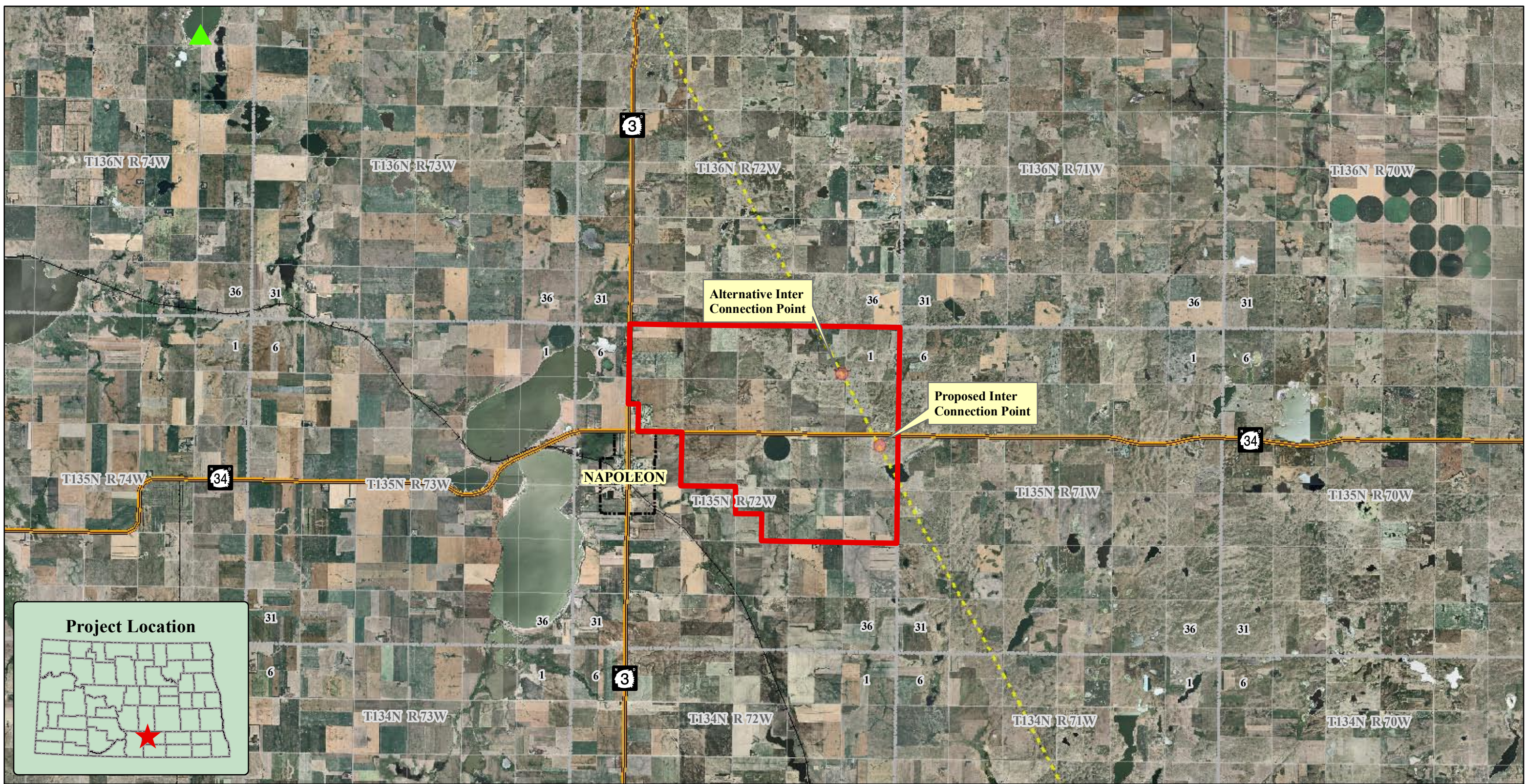
Base map data downloaded from the ND GIS Data Hub. Q3 data is a digital FIRM product developed and distributed by FEMA. Q3 data is developed by scanning and vectorizing the existing hardcopy FIRM to create a raster product suitable for viewing or printing, as well as a thematic vector overlay of flood risks. Background is 2006 USDA-FSA Aerial Photography.



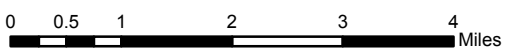
FEMA Q3 Flood Data Map - Phase I

| | | | | | |
|--------------------|------------------|-------------|--------------------------|-------------------|--------|
| Scale: AS SHOWN | Drawn by: CLS | Checked by: | Project No.: 5192-000 | Date: 03/27/07 | Sheet: |
|--------------------|------------------|-------------|--------------------------|-------------------|--------|






- Phase I Project Boundary
- Existing 345kv Transmission Line
- Corporate Boundary
- Township Line
- ▲ Species of Concern - Animal
- ★ Species of Concern - Plant
- State Highway
- ++ Railroad



Threatened & Endangered Species Map - Phase I

| | | | | | |
|--------------------|------------------|-------------|--------------------------|-------------------|--------|
| Scale: AS SHOWN | Drawn by: CLS | Checked by: | Project No.: 5192-000 | Date: 03/27/07 | Sheet: |
|--------------------|------------------|-------------|--------------------------|-------------------|--------|



Base map data downloaded from the ND GIS Data Hub. Natural Heritage Species of Concern are part of the North Dakota Natural Heritage Inventory provided by the North Dakota Parks & Recreation Department. Background is 2006 USDA-FSA Aerial Photography.