

## **SECTION A: DESCRIPTION**

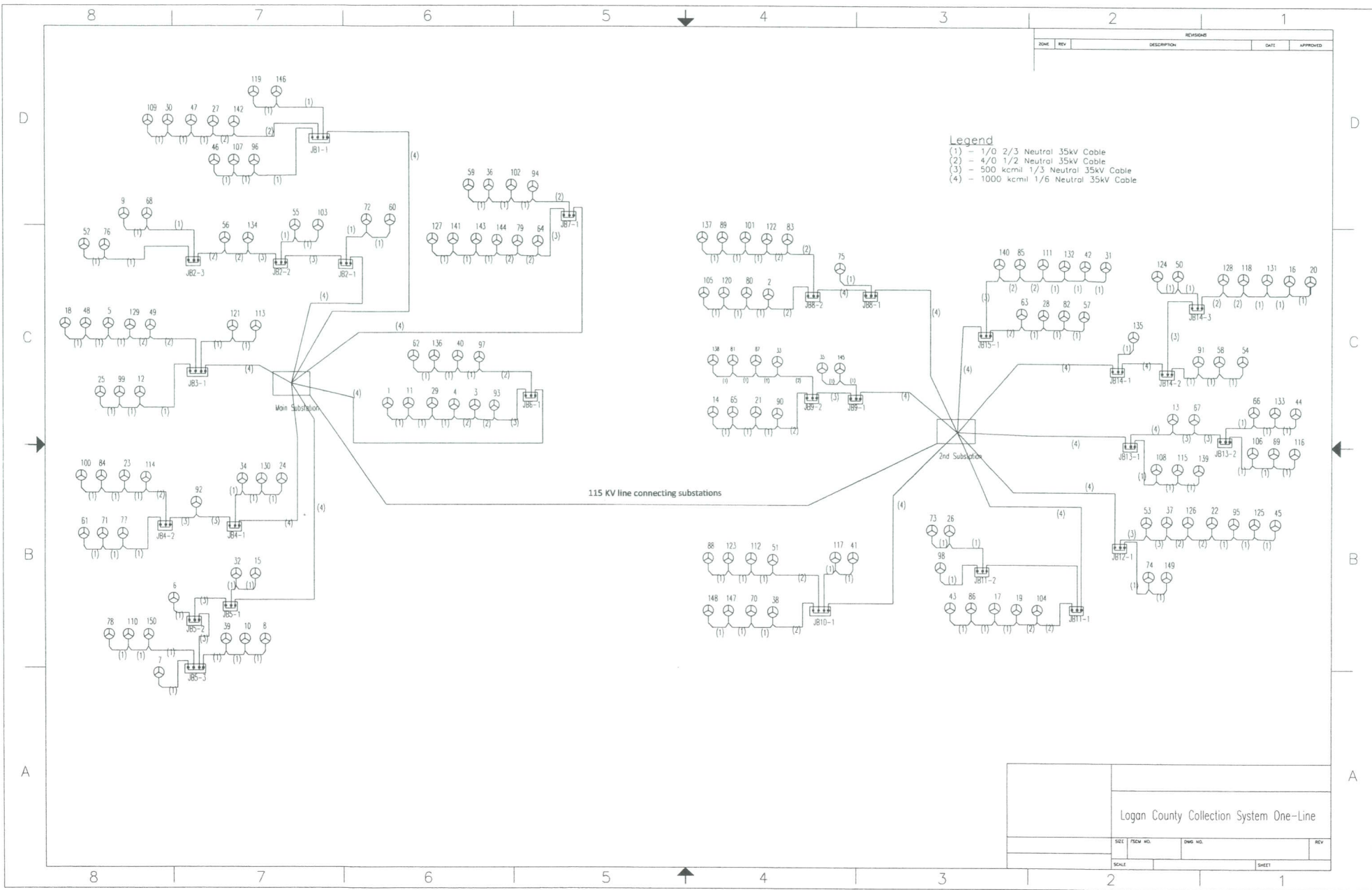
### **1. Type**

Just Wind, LLC is providing this information to meet the necessary requirements for our Interconnection Process, Environmental Impact Study, our financial obligations, our construction process, our engineering process and the North Dakota Century Plan. Just Wind plans to construct up to approximately 368 megawatts (MW) of nameplate wind power generating capacity (the "Development"). The total Development will consist of approximately 160 Siemens 93/2.3 wind turbine generators and associated collection system, including underground power collection lines, turbine access roads, underground telemeter communication lines, substation and any other equipment necessary for successful operation of the Development.

Available wind monitoring data analysis of 5 years done by 2 independent engineering firms indicates an excellent wind sources. The Development sites identified in this report are located in Glendale, Bryant and Starkey Townships in Logan County North Dakota.

REVISIONS				
ZONE	REV	DESCRIPTION	DATE	APPROVED

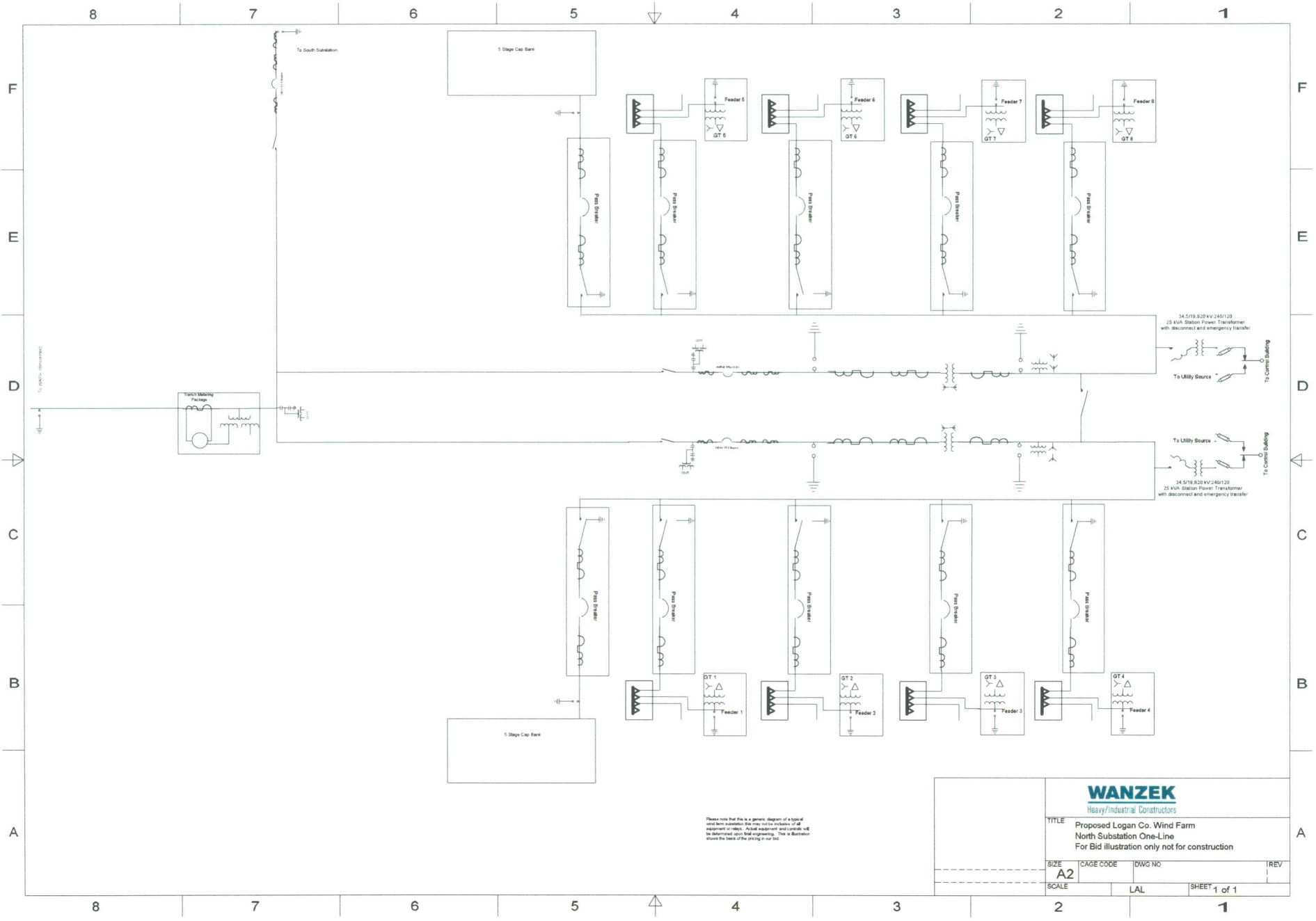
**Legend**  
 (1) - 1/0 2/3 Neutral 35kv Cable  
 (2) - 4/0 1/2 Neutral 35kv Cable  
 (3) - 500 kcmil 1/3 Neutral 35kv Cable  
 (4) - 1000 kcmil 1/6 Neutral 35kv Cable



Logan County Collection System One-Line

DATE	FROM NO.	TO NO.	REV

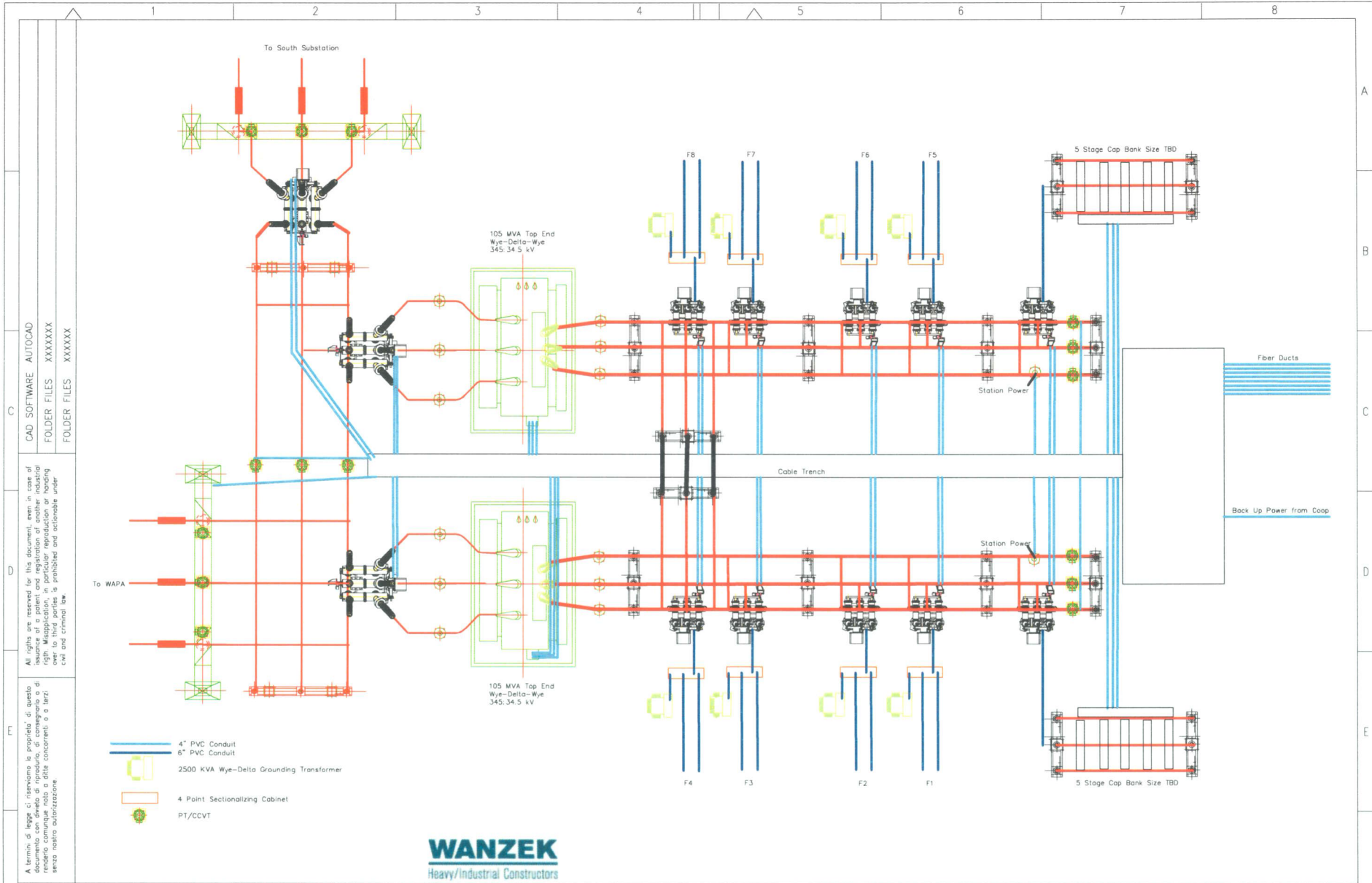
SCALE SHEET



Please note that this is a generic diagram of a typical wind farm substation that can be used to illustrate all equipment to be used. Actual equipment and details will be determined upon final engineering. This is distributed above the terms of the pricing in our bid.

**WANZEK**  
Heavy/Industrial Constructors

TITLE			
Proposed Logan Co. Wind Farm North Substation One-Line For Bid illustration only not for construction			
SIZE	CAGE CODE	DWG NO	REV
A2			
SCALE	LAL	SHEET 1 of 1	



CAD SOFTWARE AUTOCAD  
 FOLDER FILES XXXXXX  
 FOLDER FILES XXXXXX

All rights are reserved for this document, even in case of issuance of a patent and registration of another industrial right. Misapplication, in particular reproduction or handing over to third parties is prohibited and actionable under civil and criminal law.

A termini di legge ci riserviamo la proprietà di questo documento con diritto di ripudio, di consegnarlo a chi riteniamo opportuno, e di farlo copiare o ristampare senza nostro autorizzazione.

Mod.	Modified by LAL			
		ISSUED	5/5/2008	
		CHECKED		
		STANDARD		
		REV DATE		

**WANZEK**  
 Heavy/Industrial Constructors

**ABB** ABB T&D  
 UNITA' OPERATIVA ADDA

ORIGIN Origin:  
 SUBSTIT. Sostit.:

SCALE	RESP. DEPT	Centro respons.
	TITOLO	Titolo:

**TOP VIEW**

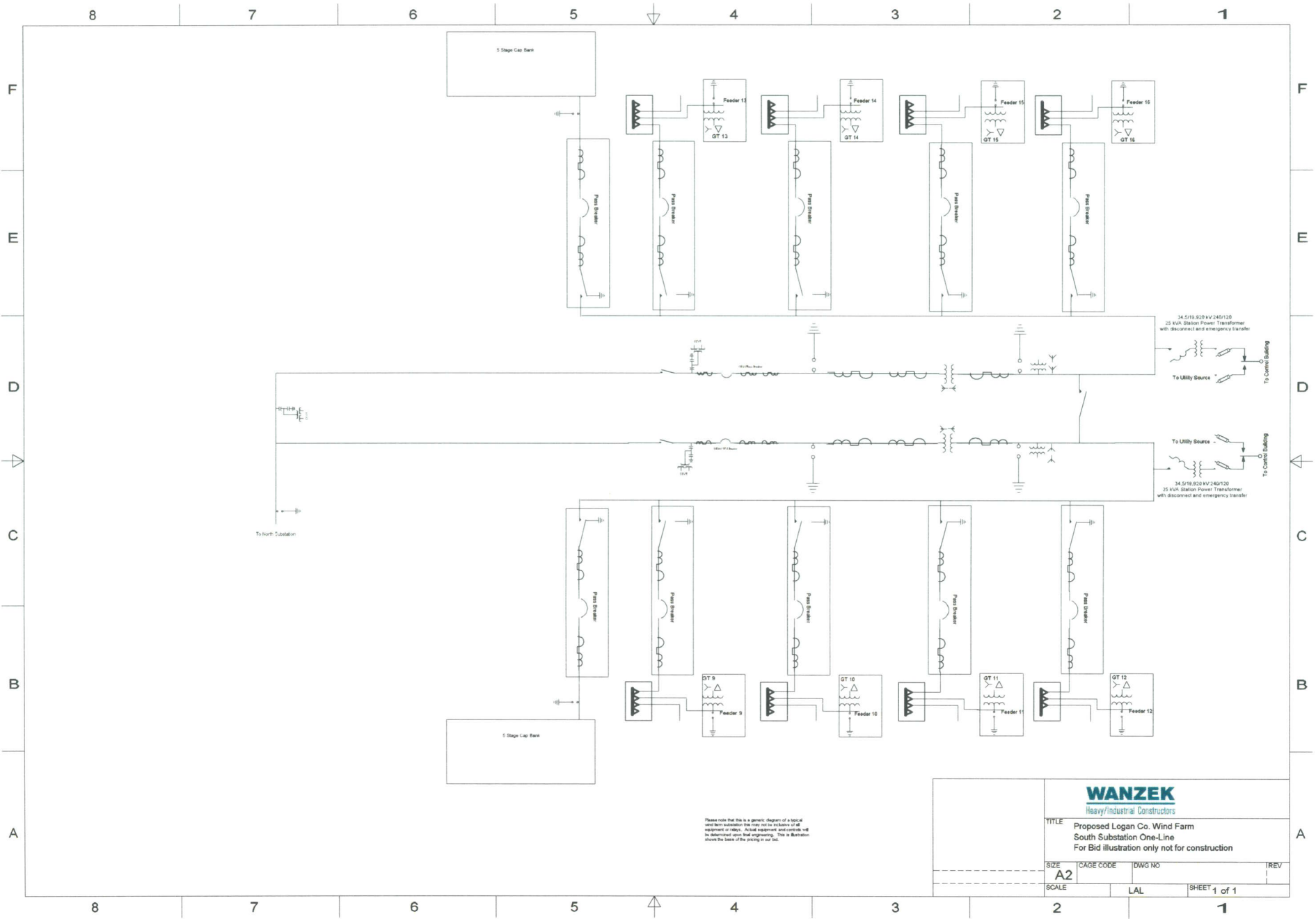
GRUPPO: GROUP	XXXXXX
N° FOLDER: N° ELENCO	
Doc.	FORMAT: A4 LANGUAGE: IVE

N° DRAW ABB ADDA  
 N° DISEGNO ABB ADDA

DIS/DRAW OF GENERAL ORDER

Logan Co Wind Farm  
 North Substation Proposed Arrangement

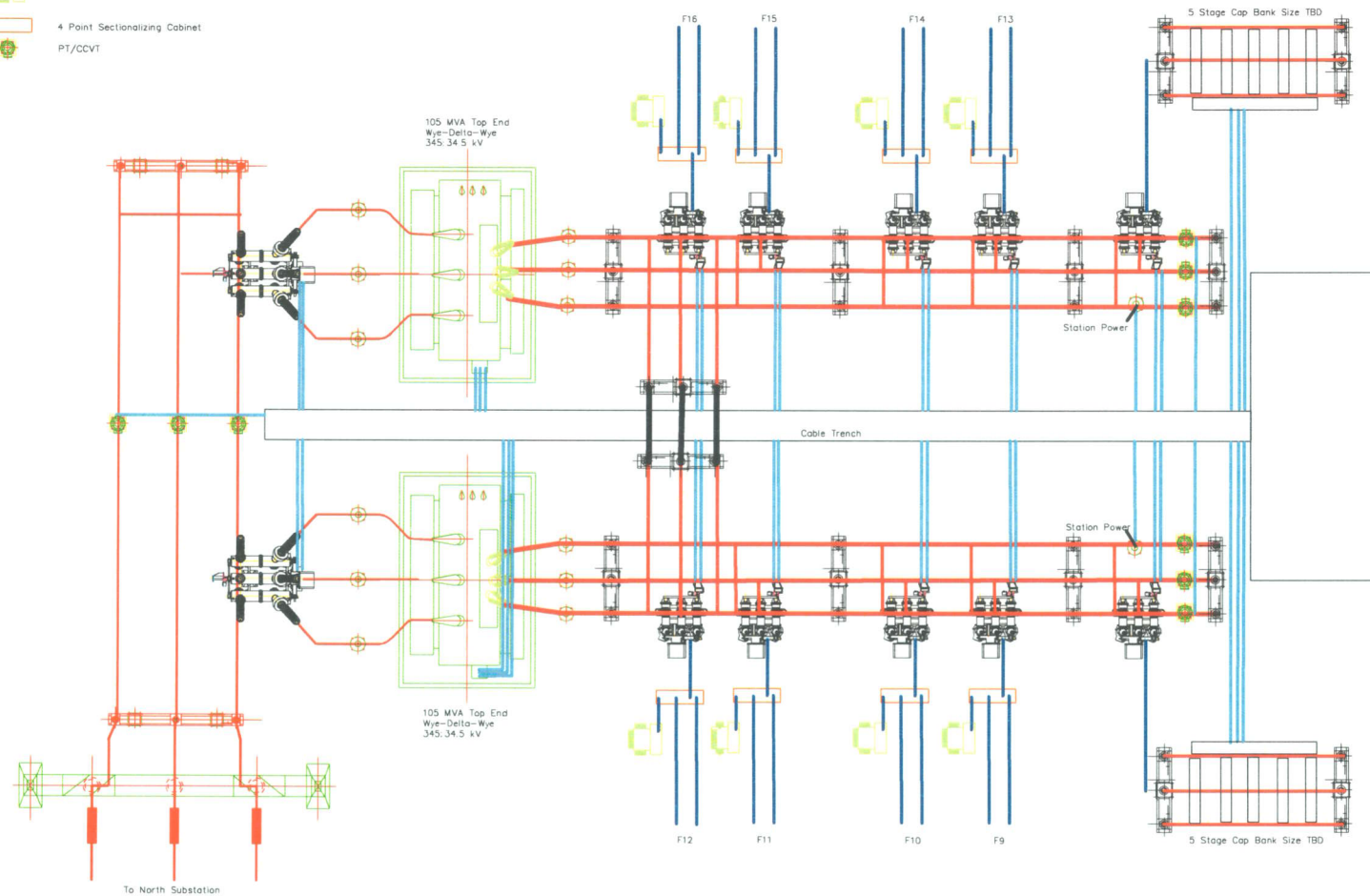
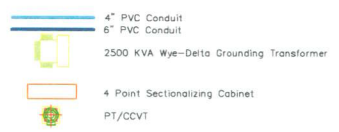
SHEET N°	N° SHEET
FOGLIO N°	N° FOGLI
<b>02</b>	<b>03</b>



Please note that this is a generic diagram of a typical wind farm substation. The owner shall be responsible for all equipment details. Actual equipment and controls will be determined after final engineering. This is a placeholder for the back of the pricing in our bid.

**WANZEK**  
Heavy Industrial Constructors

TITLE			
Proposed Logan Co. Wind Farm South Substation One-Line For Bid illustration only not for construction			
SIZE	CAGE CODE	DWG NO	REV
A2			
SCALE	LAL	SHEET 1 of 1	



CAD SOFTWARE AUTOCAD  
 FOLDER FILES XXXXXX  
 FOLDER FILES XXXXXX

All rights are reserved for this document, even in case of issuance of a patent and registration of another industrial right. Reproduction, in particular reproduction or handling, without the express written permission of the author is prohibited and constitutes a civil and criminal law.

A termini di legge ci riserviamo la proprietà di questo documento con divieto di riproduzione, di consegnarlo o di utilizzarlo in modo o a ditte concorrenti o a terzi senza nostra autorizzazione.

**WANZEK**  
 Heavy/Industrial Constructors

**ABB** ABB T&D  
 UNITA' OPERATIVA ADDA

TOP VIEW

Mod.	Modified by LAL	ISSUED	5/5/2008
		CHECKED	
		STANDARD	
		REV DATE	

SCALE	RESP DEPT	Centro respons.
TITOLO	Titolo	
ORIGIN	Substit. Sostit. da	

GRUPPO:	XXXXXXX
N.FOLDER:	N.ELENCO
Doc.	FORMAT: A4 LANG: Lingua I/E

N DRAW	ABB ADDA
N DISEGNO	ABB ADDA
DIS./DRAW OF GENERAL ORDER	
Logan Co Wind Farm	
South Substation Proposed Arrangement	

SHEET N.	02
FOLIO N.	03

