

EAPC ARCHITECTS ENGINEERS

3100 DeMers Avenue
Grand Forks, North Dakota 58201
TEL 701.775.5507 : FAX 701.772.3605

112 N. Roberts St., Suite 300,
Fargo, North Dakota 58102
TEL 701.461.7222 : FAX 701.461.7223

1819 Bemidji Ave.
Bemidji, Minnesota 56601
TEL 218.751.0151 : FAX 271.751.0170

121 E. Broadway Ave.,
Bismarck, North Dakota 58501
TEL 701.258.3116 : FAX 701.223.7983

E-MAIL eapc@eapc.net : WEB www.eapc.net

... making your
visions a reality.

SWT2.3-95-80-368MW
Setbacks Included
24K Topo

Client Just Wind

Glendale Township

Project Description

CITY Napoleon

STATE North Dakota

Issue Dates

MARK	DESCRIPTION	DATE
		7/17/08

PROJECT NO: 20064000

DRAWN BY:

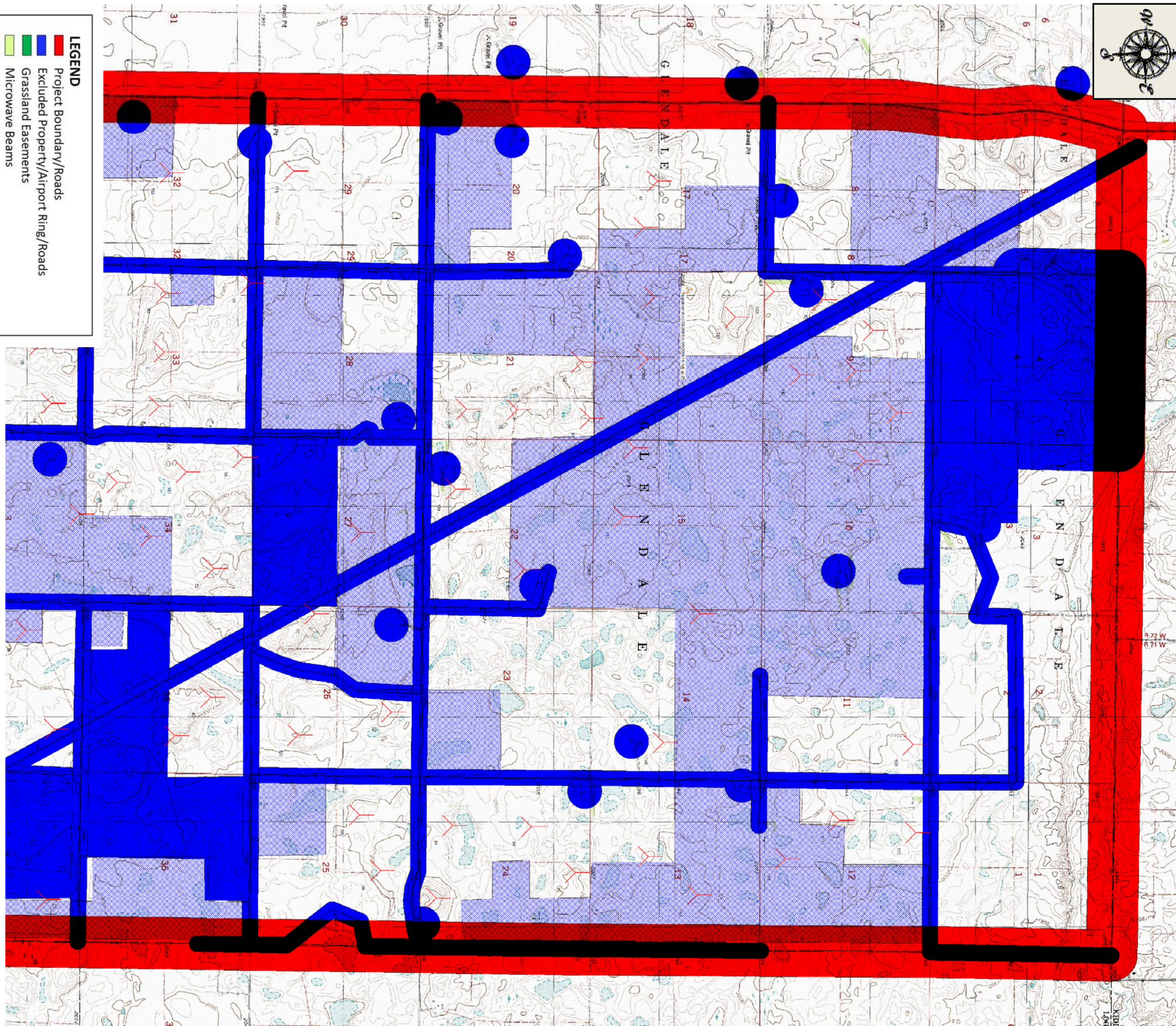
CHECKED BY:

COPYRIGHT:

All plans, specifications, computer files, field data, notes and other documents and instruments prepared by EAPC as instruments of service shall remain the property of EAPC. EAPC shall retain all common law, statutory and other reserved rights, including the copyright thereto.

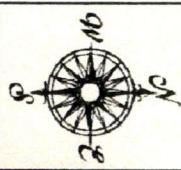
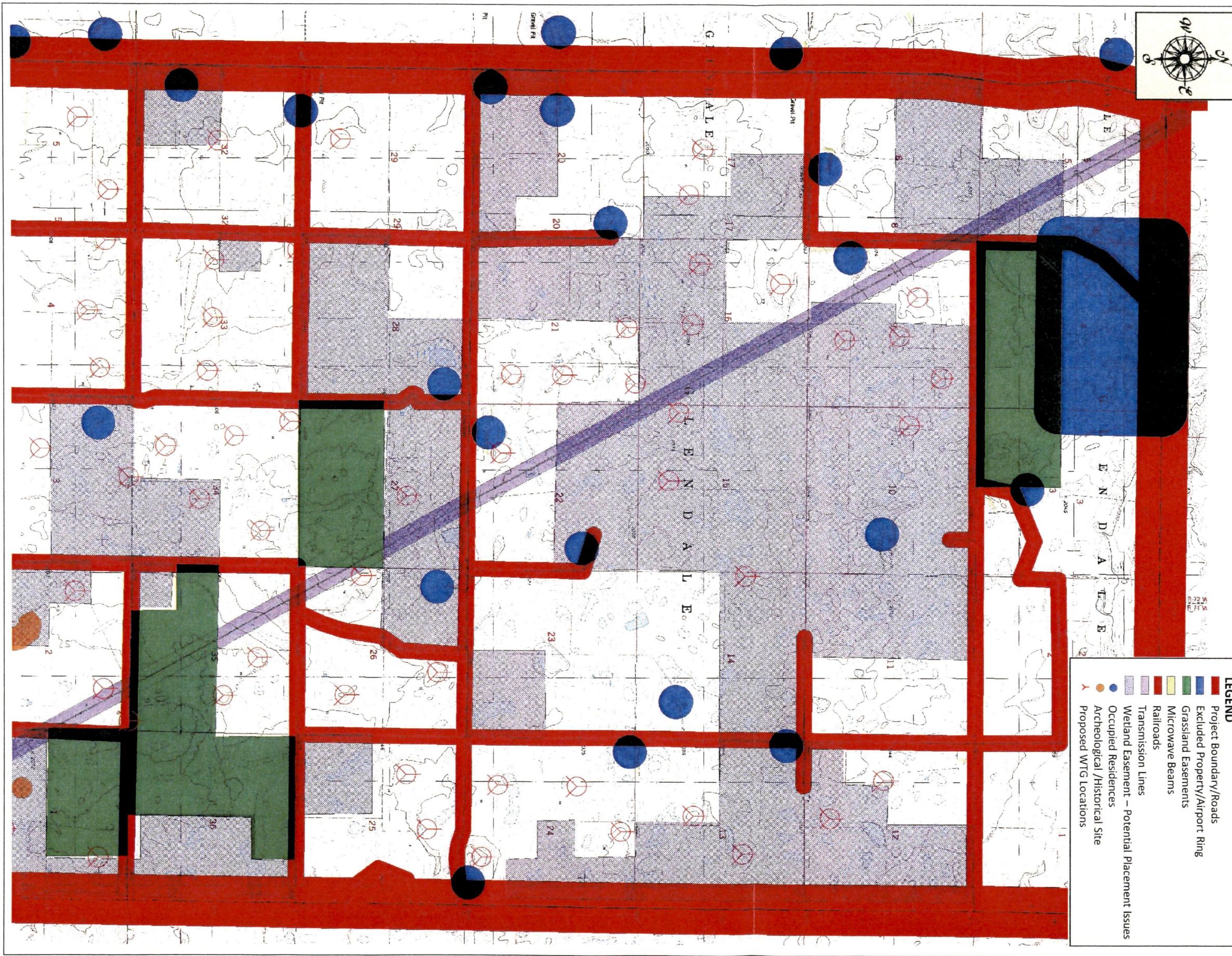
Drawing Title

SWT2.3-95-80-368MW
24K Topo



LEGEND

- Project Boundary/Roads
- Excluded Property/Airport Ring/Roads
- Grassland Easements
- Microwave Beams
- Railroads
- Transmission Lines
- Wetland Easement – Potential Placement Issues
- Occupied Residences
- Archeological /Historical Site
- Proposed WTG Locations



LEGEND

- █ Project Boundary/Roads
- █ Excluded Property/Airport Ring
- █ Grassland Easements
- █ Microwave Beams
- █ Railroads
- █ Transmission Lines
- █ Wetland Easement – Potential Placement Issues
- █ Occupied Residences
- ⊗ Archeological /Historical Site
- Proposed WTG Locations

EAPC

ARCHITECTS ENGINEERS

3100 DeMers Avenue
 Grand Forks, North Dakota 58201
 TEL 701.775.5507 : FAX 701.772.3605

112 N. Roberts St., Suite 300,
 Fargo, North Dakota 58102
 TEL 701.461.7222 : FAX 701.461.7223

1819 Bemidji Ave,
 Bemidji, Minnesota 56601
 TEL 218.751.0151 : FAX 271.751.0170

121 E. Broadway Ave.,
 Bismarck, North Dakota 58501
 TEL 701.258.3116 : FAX 701.223.7983

E-MAIL eapc@eapc.net : WEB www.eapc.net

... making your
 visions a reality.

MWT2.4-95-80-364.8MW
 Setbacks Included
 24K Topo

Client Just Wind

Glendale Township

Project Description

CITY Napoleon

STATE North Dakota

Issue Dates

MARK	DESCRIPTION	DATE
		5/5/08

PROJECT NO: 20064000

DRAWN BY:

CHECKED BY:

COPYRIGHT:
 All plans, specifications, computer files, field data, notes and other documents and instruments prepared by EAPC as instruments of service shall remain the property of EAPC. EAPC shall retain all common law, statutory and other reserved rights, including the copyright therein.

Drawing Title

MWT2.4-95-80-364.8MW
 24K Topo