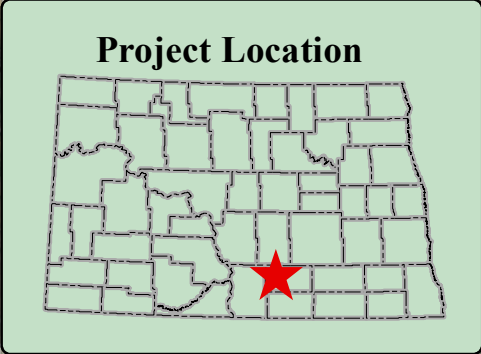
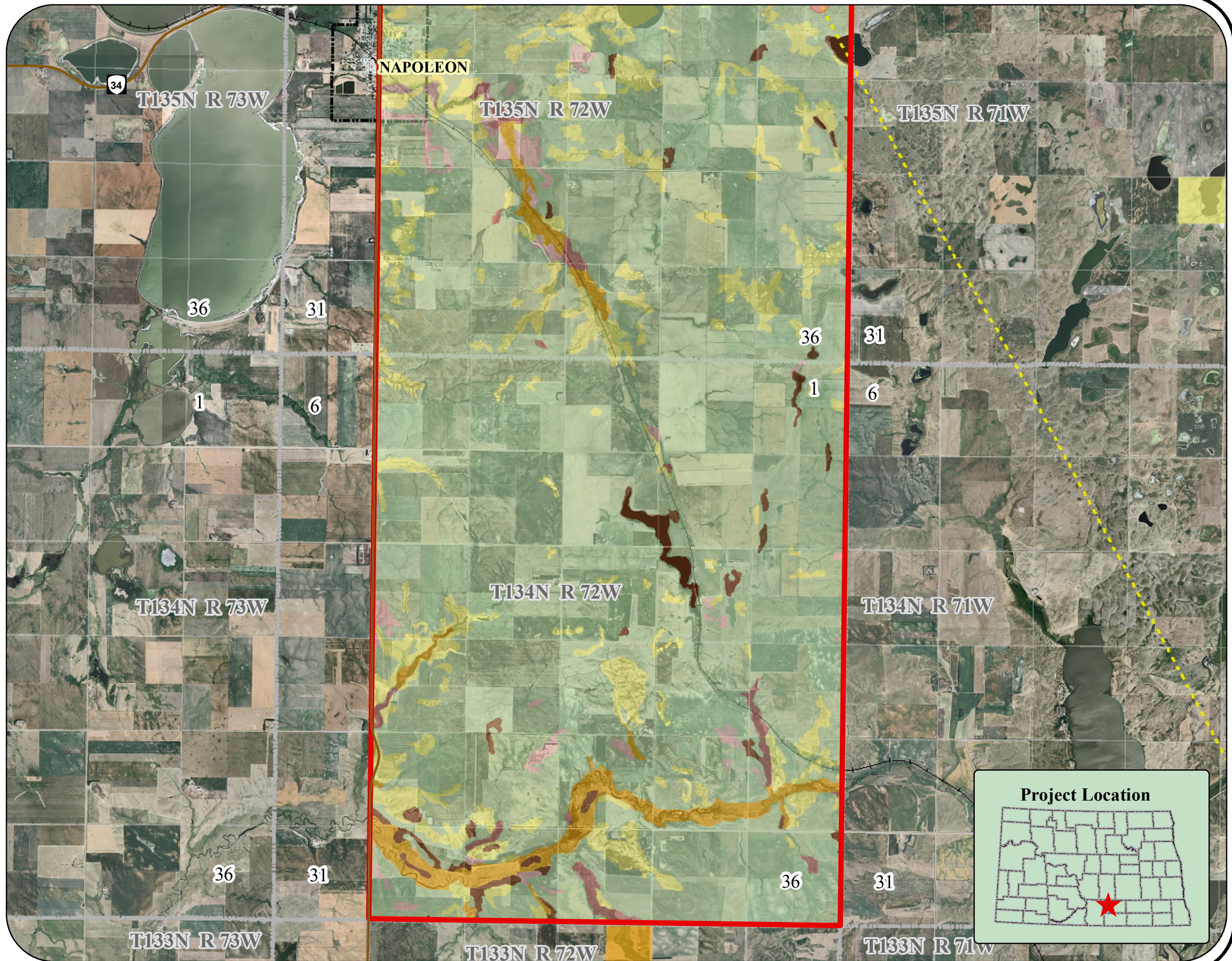
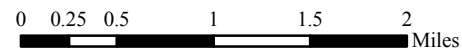
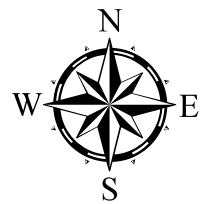


Hydrologic Soil Group Phase I South

Hydrologic Soil Group

- A - Soils having a high infiltration rate (low run off potential) when thoroughly wet.
- B - Soil having a moderate infiltration rate when thoroughly wet.
- B/D - B if drained, D if undrained.
- C - having a slow infiltration rate when thoroughly wet.
- C/D - C if drained, D if undrained.
- D - having a very slow infiltration rate (high runoff potential) when thoroughly wet.

Data downloaded from the ND GIS Data Hub.
SSURGO soil data downloaded from the NRCS
Soil Data Mart. SSURGO metadata defines a
hydrologic group as a group of soils having similar
runoff potential under similar storm and cover conditions.
Background is 2006 USDA-FSA Aerial Photography.



Hydrologic Soil Group - Phase I South					
Scale: AS SHOWN	Drawn by: KZS	Checked by:	Project No.: 5192-000	Date: 07/07/08	Sheet:
Map created by: Houston Engineering, Inc. 6901 E. Fish Lake Rd., Suite 140 Maple Grove, MN 55369 Bus: (763) 493-4522 Fax: (763) 493-5572					