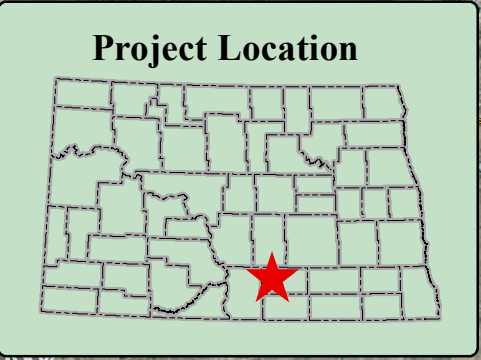
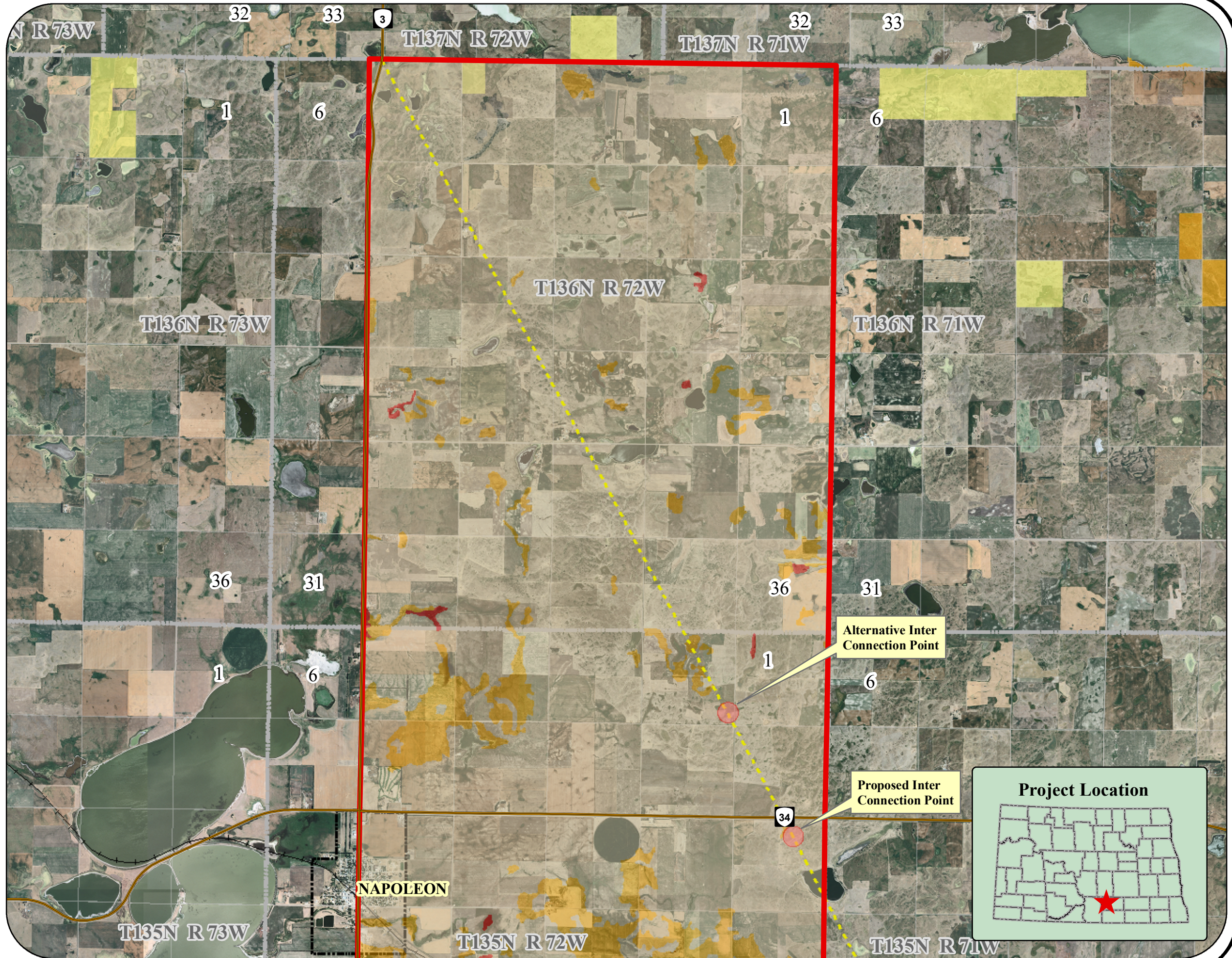
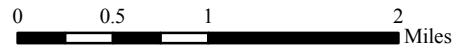
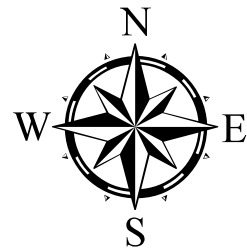


# Prime Farmland Phase I North

## Prime Farmland Classification

- Farmland of statewide importance
- Prime farmland if drained
- Not prime farmland

Data downloaded from the ND GIS Data Hub. SSURGO soil data downloaded from the NRCS Soil Data Mart. Prime farmland, as defined by the U.S. Department of Agriculture, is land that has the best combination of physical and chemical characteristics for producing food, feed, forage, fiber, and oilseed crops and is available for these uses. It could be cultivated land, pastureland, forestland, or other land, but it is not urban or built-up land or water areas. Farmland of statewide importance generally includes areas of soils that nearly meet the requirements for prime farmland and that economically produce high yields of crops when treated and managed according to acceptable farming methods. Some areas may produce as high a yield as prime farmland if conditions are favorable. Background is 2006 USDA-FSA Aerial Photography.



|  |                  |             |                          |                  |        |
|--|------------------|-------------|--------------------------|------------------|--------|
| Prime Farmland - Phase I North   |                  |             |                          |                  |        |
| Scale:<br>AS SHOWN   | Drawn by:<br>KZS | Checked by: | Project No.:<br>5192-000 | Date:<br>07/3/08 | Sheet: |
| Map created by:<br><b>Houston Engineering, Inc.</b><br>6901 E. Fish Lake Rd., Suite 140<br>Maple Grove, MN 55369<br>Bus: (763) 493-4522<br>Fax: (763) 493-5572 |                  |             |                          |                  |        |